

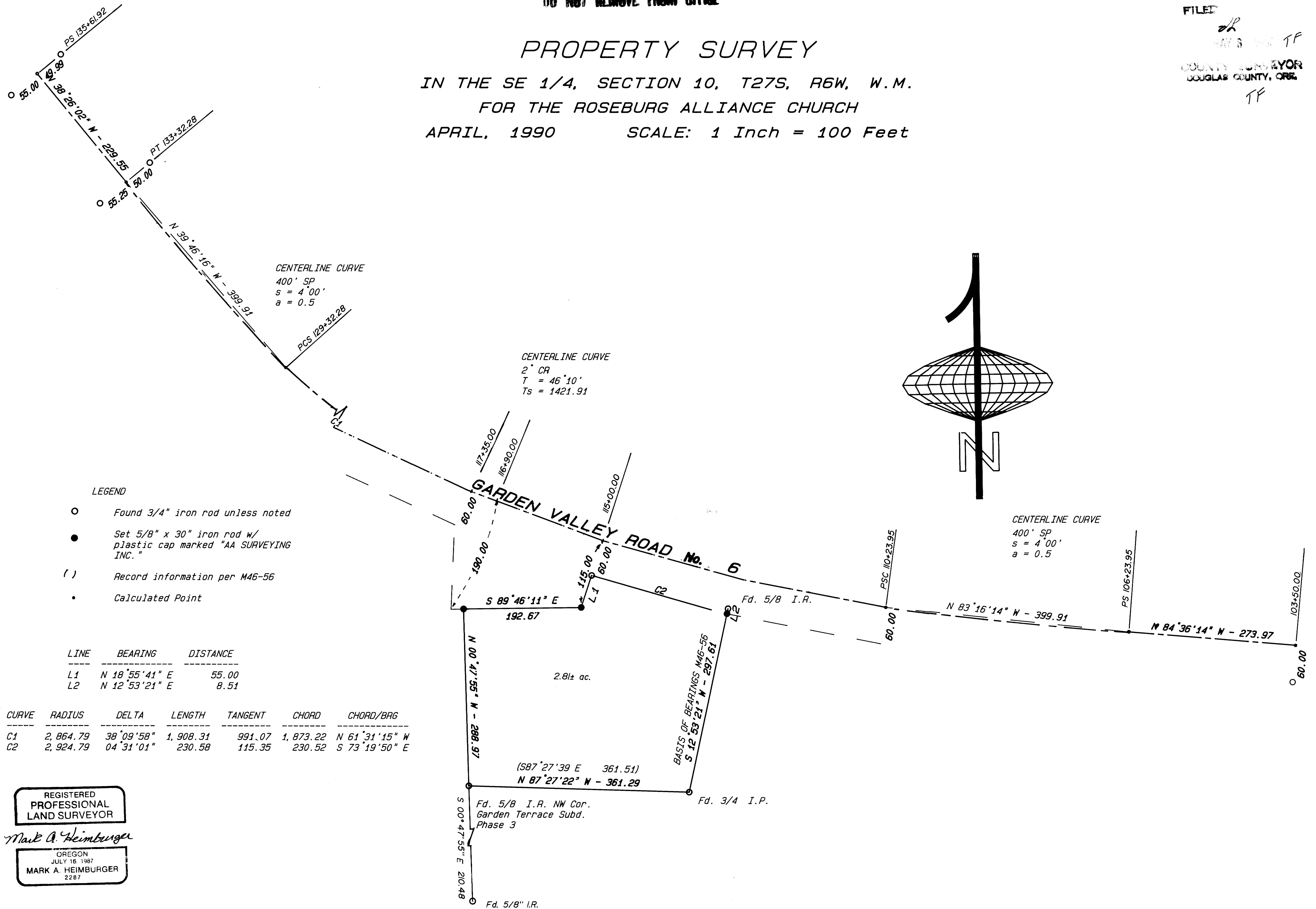
COUNTY SURVEYORS FILE DATA
DO NOT REMOVE FROM OFFICE

FILED
MAY 3 1990 TF
COUNTY SURVEYOR
DOUGLAS COUNTY, ORE.
TF

M110-8

PROPERTY SURVEY

IN THE SE 1/4, SECTION 10, T27S, R6W, W.M.
FOR THE ROSEBURG ALLIANCE CHURCH
APRIL, 1990 SCALE: 1 Inch = 100 Feet



- LEGEND
- Found 3/4" iron rod unless noted
 - Set 5/8" x 30" iron rod w/ plastic cap marked "AA SURVEYING INC."
 - () Record information per M46-56
 - Calculated Point

LINE	BEARING	DISTANCE
L1	N 18°55'41" E	55.00
L2	N 12°53'21" E	8.51

CURVE	RADIUS	DELTA	LENGTH	TANGENT	CHORD	CHORD/BAG
C1	2,864.79	38°09'58"	1,908.31	991.07	1,873.22	N 61°31'15" W
C2	2,924.79	04°31'01"	230.58	115.35	230.52	S 73°19'50" E

REGISTERED
PROFESSIONAL
LAND SURVEYOR

Mark A. Heimbürger

OREGON
JULY 16, 1987
MARK A. HEIMBURGER
2287

M110-8