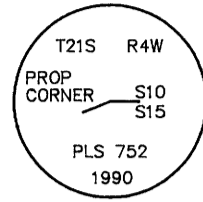


SECTION CORNER 9,10,15,16

FOUND : DOUGLAS COUNTY BRASS CAP DATED 1981

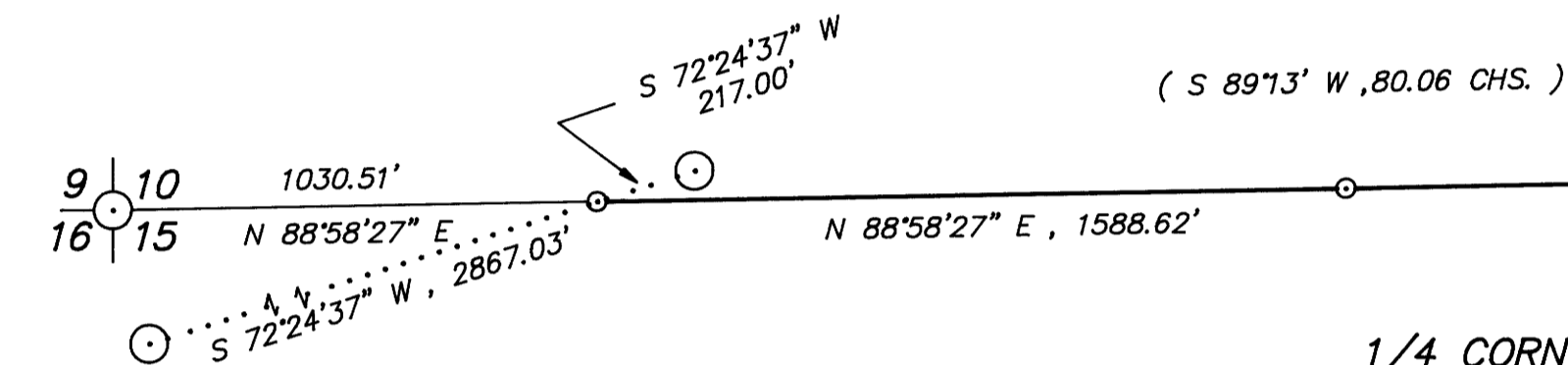
PROPERTY CORNER

SET : 2" X 42" IRON PIPE WITH BRASS CAP
 19" FIR , N 47 E , 2.8' (scribed "PC BT")
 10" FIR , S 12 W , 10.7' (scribed "PC BT")



STATE HIGHWAY R/W MONUMENT

FOUND : 1-1/2" ALUMINUM CAP ON REBAR
 STEEL POST WITH PADDLE TYPE SIGN
 MKD. "S.H.R.W. L 72+07.74 LT. 510"



STATE HIGHWAY R/W MONUMENT

FOUND : 1-1/2" ALUMINUM CAP ON REBAR
 STEEL POST WITH PADDLE TYPE SIGN
 MKD. "S.H.R.W. L 105+00.00 LT. 600"

1/4 CORNER 10 & 15

SET : 2" X 41" IRON PIPE WITH BRASS CAP
 24" MAPLE , N 85-1/2 E , 51.3' (scribed "1/4S10BT")
 48" WHITE FIR , S 26 E , 32.0' (scribed "1/4S15BT")
 32" WHITE FIR , S 20-1/4 W , 74.4' (scribed "1/4S15BT")
 24" HEMLOCK , N 31-1/2 W , 55.9' (scribed "1/4S10BT")

NOTE : 3/4" IRON PIPE OF UNKNOWN ORIGIN
 BEARS S 8°56.07" E , 38.54'



SECTION CORNER 2,3,10,11

FOUND : 1-1/4" IRON PIPE WITH DOUGLAS CO. BRASS CAP
 23" INCENSE CEDAR , N 54-1/2 E , 54.7' (closed face)
 14" WHITE FIR , S 30-1/4 E , 16.8' (closed face)
 15" WHITE FIR , S 21-1/4 W , 19.5' (closed face)
 12" WHITE FIR , N 83 W , 11.5' (closed face)

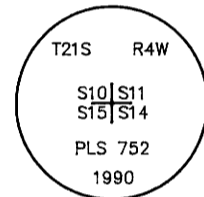
1/4 CORNER 11 & 14

FOUND : 5/8" REBAR
 21" FIR , S 63-3/4 E , 13.7' (closed face)
 48" FIR STUMP , S 43-1/2 W , 42.9' (scribing visible on pitch face - "BT")

NOTE : 1" (O.D.) IRON PIPE BEARS N 66°01'40" E , 5.73'

SECTION CORNER 10,11,14,15

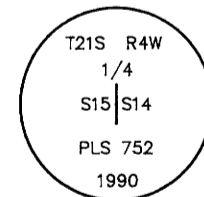
SET : 2" X 41" IRON PIPE WITH BRASS CAP
 6" STEEL FENCE POST 2' SOUTH
 11" FIR , N 71 E , 114.2' (scribed "T21SR4WS11BT")
 23" FIR , S 76-1/2 E , 118.3' (scribed "T21SR4WS14BT")
 18" MAPLE , S 41 W , 33.0' (scribed "T21SR4WS15BT")
 18" DOUBLE ALDER , N 13 W , 46.5' (bark scribed "T21SR4WS10BT")



1/4 CORNER 14 & 15

SET : 2" X 42" IRON PIPE WITH BRASS CAP
 6" STEEL FENCE POST 1' SOUTH
 16" ALDER , N 63-1/2 E , 22.8' (bark scribed "1/4S14BT")
 13" ALDER , S 66-3/4 E , 31.2' (bark scribed "1/4S14BT")
 60" FIR STUMP , S 73-1/2 W , 41.0' (scribed "1/4S15BT")
 12" CEDAR , N 51-3/4 W , 34.2' (scribed "1/4S15BT")

NOTE : 1/2" REBAR OF UNKNOWN ORIGIN FOUND NEAR 1/4 COR.
 BEARS ~~S 1°41'30" W 34.55'~~
 S 1°41'30" W 34.55'



- NARRATIVE -

THIS SURVEY WAS MADE IN SEPTEMBER, 1990 BY DONALD L. PEEL OF PEEL BAKER LAND SURVEYING, INC., 1385 OAK STREET - SUITE 3, EUGENE, OREGON. THE PURPOSE OF THIS SURVEY WAS TO LOCATE AND MARK THE NORTH LINE OF SECTION 15, T21S, R4W, W.M.. A WILD T1000 THEOMAT AND DI5S E.D.M. WERE USED TO PERFORM THIS SURVEY. CLOSED RANDOM TRAVERSES WERE RUN BETWEEN FOUND CORNERS FOR CONTROL. BEARINGS WERE BASED ON A SOLAR OBSERVATION. A RANDOM TRANSIT TRAVERSE WAS RUN AS NEAR AS POSSIBLE TO THE LINE THAT WAS TO BE MARKED. OFFSETS FROM THE RANDOM TRAVERSE LINE TO THE TRUE PROPERTY LINE WERE CALCULATED AND USED TO DETERMINE THE POSITION OF THE TRUE LINE. THE TRUE LINE WAS MARKED IN THE FIELD BY BLAZING TREES (BLAZES NOTCHED AND PAINTED RED) ON BOTH SIDES OF THE TRUE LINE. THE NORTHEAST AND SOUTHWEST CORNERS OF SECTION 10, THE SOUTHEAST CORNER OF SECTION 15 AND THE NORTH 1/4 CORNER OF SECTION 14 WERE ALL FOUND AND USED FOR CONTROL. A 1/2" REBAR OF UNKNOWN ORIGIN WAS FOUND NEAR THE POSITION FOR THE EAST 1/4 CORNER OF SECTION 15. THERE WAS NO SUPPORTING EVIDENCE TO CONFIRM THIS POSITION SO I SET SAID 1/4 CORNER BY SINGLE PROPORTION. A 3/4" IRON PIPE OF UNKNOWN ORIGIN WAS FOUND NEAR THE POSITION FOR THE NORTH 1/4 CORNER OF SECTION 15. THERE WAS NO SUPPORTING EVIDENCE TO CONFIRM THIS POSITION SO I SET SAID 1/4 CORNER BY SINGLE PROPORTION. NEAR THE POSITION FOR THE EAST 1/4 CORNER OF SECTION 10, I FOUND THE REMAINS OF AN OLD NORTH-SOUTH FENCE LINE AND AN OLD DOWNED FENCE RUNNING EASTERLY. I FOUND NO OTHER EVIDENCE TO SUPPORT THIS POSITION AS THE 1/4 CORNER SO I DETERMINED THE POSITION (BUT DID NOT SET) OF THE EAST 1/4 CORNER OF SECTION 10 BY SINGLE PROPORTION. I FOUND NO EVIDENCE OF THE NORTHEAST CORNER OF SECTION 15 SO I SET SAID CORNER BY DOUBLE PROPORTION. THE PROPERTY CORNER ON THE WESTERLY 1/4 OF THE NORTH LINE OF SECTION 15 WAS SET AT THE POINT OF INTERSECTION OF THE NORTH LINE OF SECTION 15 AND THE STATE HIGHWAY RIGHT OF WAY LINE. ALL CORNERS SET IN THIS SURVEY WERE MONUMENTED WITH 2" IRON PIPES WITH BRASS CAPS AS NOTED ON THIS PLAT. FOR ALL BEARING TREES MARKED IN THIS SURVEY, THE DISTANCE WAS MEASURED FROM THE CORNER TO "W" NAIL IN THE LOWER BLAZE.

PROFESSIONAL
 LAND SURVEYOR
 Donald L. Peel
 OREGON
 JULY 6, 1988
 DONALD L. PEEL
 752

SECTION CORNER 14,15,22,23

FOUND : 2-1/2" IRON PIPE WITH B.L.M. BRASS CAP
 20" FIR , N 51-3/4 E , 7.1' (closed face)
 10" FIR , S 22-1/4 E , 60.6' (closed face)
 13" fir , s 29 w , 32.9' (closed face)
 18" FIR , N 46-1/4 W , 11.2' (closed face)

- CORNERS FOUND
- CORNERS SET THIS SURVEY
- BLAZED PROPERTY LINE
- () RECORD DATA G.L.O. 1856
- STATE HIGHWAY R/W LINE

BASIS OF BEARING : SOLAR OBSERVATION
 SCALE : 1" = 400'

COUNTY SURVEYORS FILE DATA
 DO NOT REMOVE FROM OFFICE
 SURVEY OF
 NORTH LINE OF SEC. 15, T21S, R4W, W.M.
 DOUGLAS COUNTY OREGON

FOR
 WEYERHAEUSER COMPANY
 BY
 PEEL BAKER LAND SURVEYING, INC.
 OCTOBER 1, 1990