

SURVEY TO SET LOT CORNERS
IN THE CITY OF ELKTON
IN THE S.E. 1/4 OF SEC 19, & THE S.W. 1/4 OF SEC. 20

T. 22S., R. 7W., W.M.
OCTOBER 1990 SCALE 1" = 60'

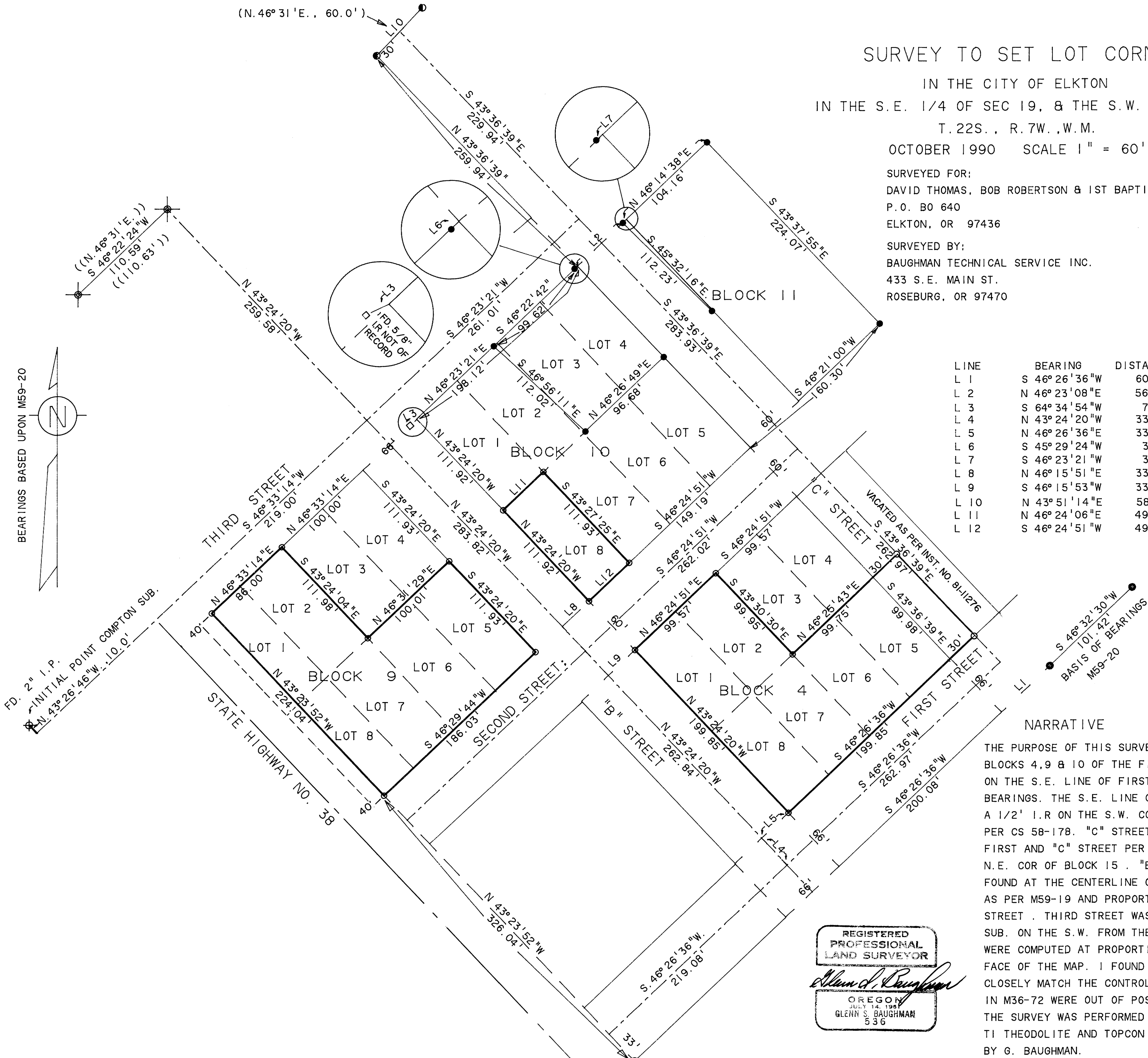
SURVEYED FOR:
DAVID THOMAS, BOB ROBERTSON & 1ST BAPTIST CHURCH
P.O. BOX 640
ELKTON, OR 97436

SURVEYED BY:
BAUGHMAN TECHNICAL SERVICE INC.
433 S.E. MAIN ST.
ROSEBURG, OR 97470

- LEGEND:
- = SET 5/8" X 30" I.R. W/ PL CAP MK'D BAUGHMAN TECH SERV
 - = FD. 5/8" I.R. AS PER M36-72
 - = FD. 5/8" I.R. AS PER M59-20
 - = FD. 1/2" I.R. AS PER CS58-178
 - ⊕ = FD. 5/8" I.R. AS PER M59-19
 - = FD. 1" I.P AS PER ALTA VISTA SUB.
 - () = RECORD CALLS AS PER ALTA VISTA SUB.
 - (()) = RECORD CALLS AS PER M59-19

NOTE:
BOTH THE FIRST ADDN. TO ELKTON AND M36-72 HAVE NO BEARINGS TO CHECK AGAINST AND M36-72 HAS NO DISTANCES TO CHECK AGAINST. THE FIRST ADDN. TO ELKTON HAS LOT DIMENSIONS OF 50' X 100' IN BLOCK 4 AND 50' X 112' IN BLOCKS 9 & 10 EXCEPT LOTS HAS A R/W TAKING AT A LATER DATE TO BE CONSIDERED.

LINE	BEARING	DISTANCE
L 1	S 46° 26' 36" W	60.00'
L 2	N 46° 23' 08" E	56.05'
L 3	S 64° 34' 54" W	7.49'
L 4	N 43° 24' 20" W	33.00'
L 5	N 46° 26' 36" E	33.00'
L 6	S 45° 29' 24" W	3.69'
L 7	S 46° 23' 21" W	3.95'
L 8	N 46° 15' 51" E	33.00'
L 9	S 46° 15' 53" W	33.00'
L 10	N 43° 51' 14" E	58.78'
L 11	N 46° 24' 06" E	49.63'
L 12	S 46° 24' 51" W	49.73'



NARRATIVE

THE PURPOSE OF THIS SURVEY WAS TO MONUMENT CORNERS OF LOTS IN BLOCKS 4, 9 & 10 OF THE FIRST ADDITION TO ELKTON. MONUMENTS FOUND ON THE S.E. LINE OF FIRST STREET PER M59-20 WERE THE BASIS OF BEARINGS. THE S.E. LINE OF FIRST STREET WAS CONTROLLED BY THESE & A 1/2' I.R. ON THE S.W. CORNER OF BLOCK 3, PLAT OF ELKTON AS PER CS 58-178. "C" STREET WAS CONTROLLED BY THE MONUMENTS AT FIRST AND "C" STREET PER M59-20 AND A MONUMENT FOUND AS THE N.E. COR. OF BLOCK 15. "B" STREET WAS CONTROLLED BY A MONUMENT FOUND AT THE CENTERLINE OF "B" STREET AND VACATED FOURTH STREET AS PER M59-19 AND PROPORTIONATE MEASUREMENT ON THE S.E. LINE OF FIRST STREET. THIRD STREET WAS CONTROLLED BY THE INITIAL POINT OF COMPTON SUB. ON THE S.W. FROM THESE CONTROLLING POINTS BLOCK AND LOT CORNERS WERE COMPUTED AT PROPORTIONATE DISTANCES AND ESTABLISHED AS SHOWN ON FACE OF THE MAP. I FOUND FOUR MONUMENTS BY HAINES PER M36-72 TO CLOSELY MATCH THE CONTROL ALONG "C" STREET BUT FIVE MONUMENTS SHOWN IN M36-72 WERE OUT OF POSITION. THE SURVEY WAS PERFORMED BY K. DEGROOT AND M. REPOSA USING A WILD TI THEODOLITE AND TOPCON EDM. DRAFTING AND COMPUTING WAS PERFORMED BY G. BAUGHMAN.

REGISTERED PROFESSIONAL LAND SURVEYOR
Glenn S. Baughman
OREGON
JULY 14, 1988
GLENN S. BAUGHMAN
536

BEARINGS BASED UPON M59-20

FD. 2" I.P.
INITIAL POINT COMPTON SUB.
N 43° 26' 46" W 10.0'
S 46° 31' 14" E 60.0'

S 46° 32' 30" W 101.42'
BASIS OF BEARINGS M59-20

MAP FILE M110-21

MAP FILE M110-21