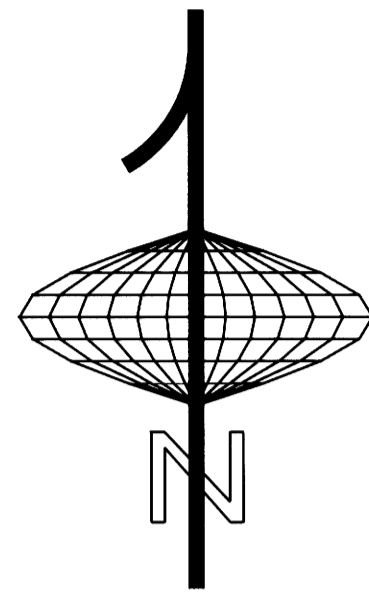
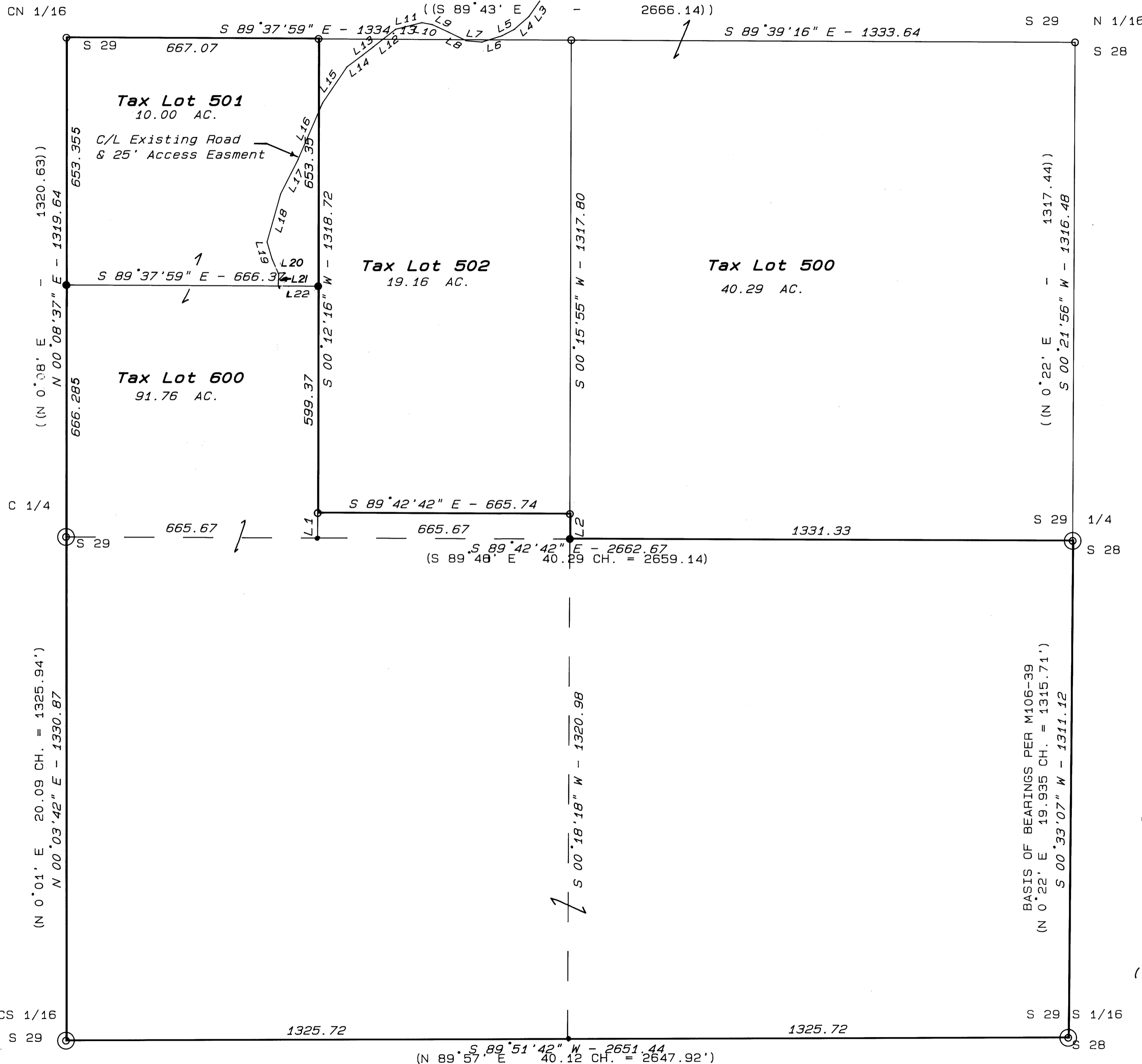


COUNTY SURVEYORS FILE DATA
DO NOT REMOVE FROM OFFICE

LOT LINE ADJUSTMENT

IN THE NE 1/4 & THE SE 1/4, SECTION 29, T32S, R5W, W.M
For Neil DeVaughn
AUG. 1990 SCALE: 1 inch = 200 feet

FILED
JL
SEP 13 1990 JP
COUNTY SURVEYOR
DOUGLAS COUNTY, ORE
JP



REGISTERED
PROFESSIONAL
LAND SURVEYOR

Mark A. Heimburger

OREGON
JULY 15, 1987
MARK A. HEIMBURGER
2287

LINE	BEARING	DISTANCE
L1	S 00°12'16" W	66.00
L2	S 00°15'55" W	66.00
L3	S 34°55'45" W	49.19
L4	S 48°48'14" W	51.44
L5	S 62°14'26" W	36.11
L6	S 72°38'23" W	56.24
L7	N 84°50'57" W	41.31
L8	N 64°04'26" W	50.73
L9	N 65°13'15" W	48.69
L10	N 79°03'10" W	27.79
L11	S 75°47'10" W	71.55
L12	S 51°45'55" W	75.54
L13	S 52°34'38" W	34.28
L14	S 53°12'42" W	52.49
L15	S 34°03'13" W	115.53
L16	S 23°30'19" W	162.16
L17	S 26°57'34" W	102.99
L18	S 15°48'27" W	131.30
L19	S 16°40'41" E	47.28
L20	S 23°20'43" E	42.45
L21	S 01°55'04" W	32.08
L22	S 89°37'59" E	105.31

APPROVAL
Keith L. Cubic 9/18/90
PLANNING DIRECTOR DATE

LEGEND

- Found 5/8" iron rod per M106-39 unless noted
- ⊙ Found B.L.M. brass cap and accessories
- Set 5/8" x 30" iron rod with plastic cap marked "AA SURVEYING INC."
- Calculated point
- () Record information per B.L.M. Dependant Resurvey dated 1964
- (()) Record information per CS 55/164

BASIS OF BEARINGS PER M106-39
(N 0°22' E 19.935 CH. = 1315.71')
S 00°33'07" W - 1311.12

MAF 11/10-66

M110-66