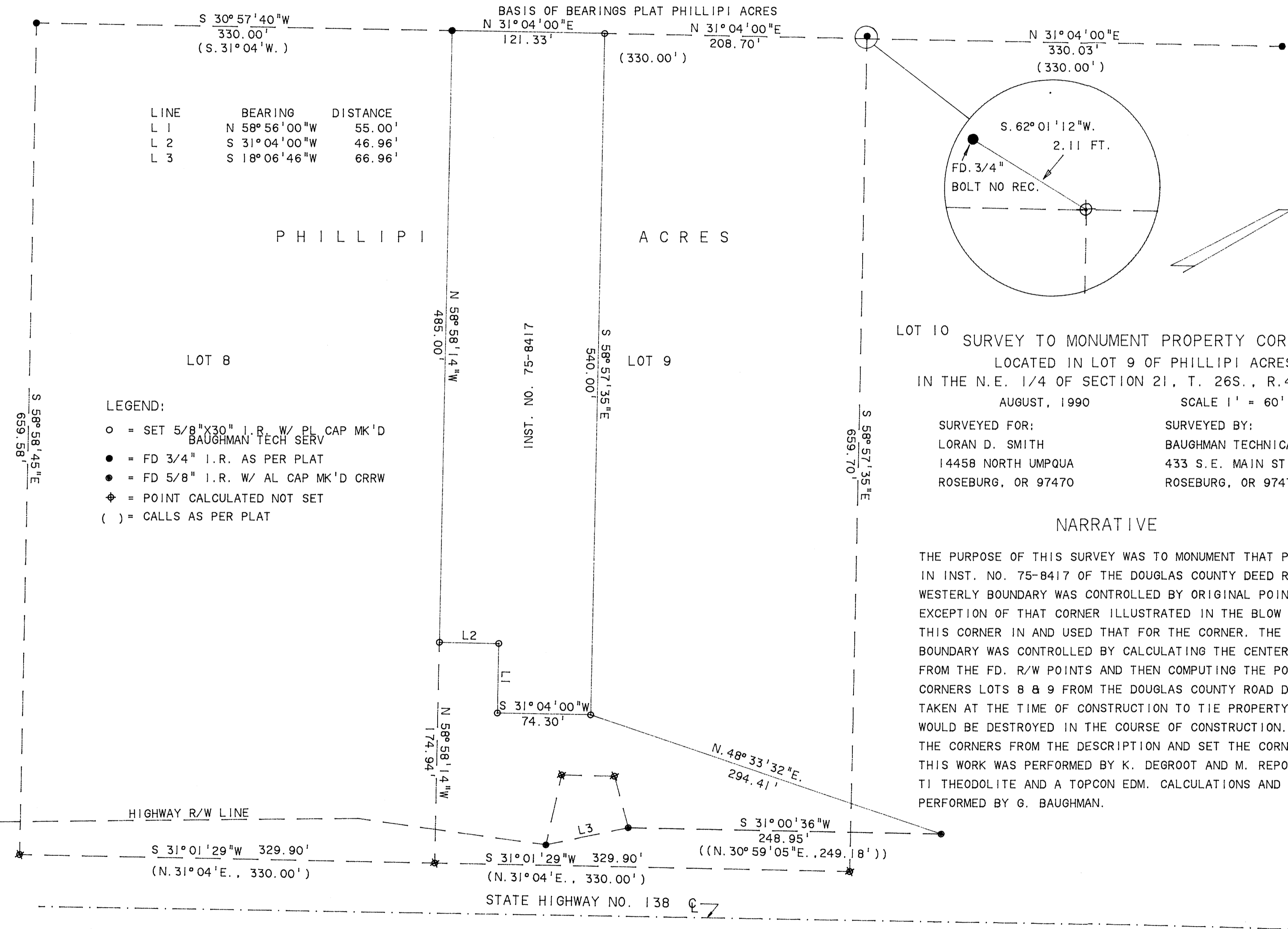


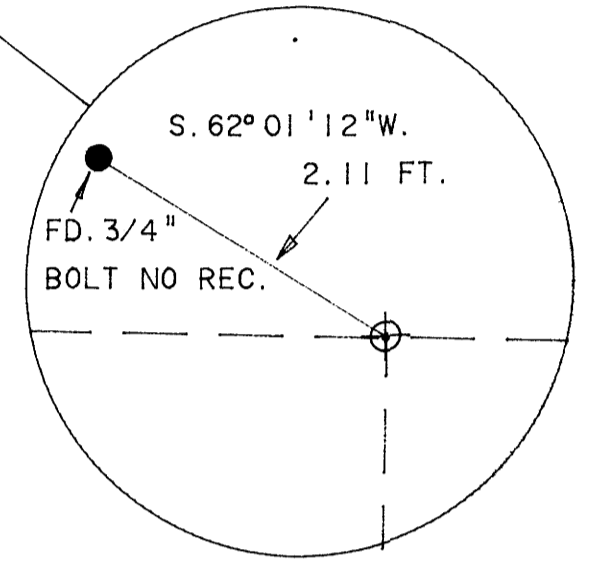
FILED  
 jh  
 SEP 6 1990  
 COUNTY SURVEYOR  
 DOUGLAS COUNTY, ORE.  
 j

MAP FILE M116-52



LINE	BEARING	DISTANCE
L 1	N 58° 56' 00" W	55.00'
L 2	S 31° 04' 00" W	46.96'
L 3	S 18° 06' 46" W	66.96'

LEGEND:  
 ○ = SET 5/8" X 30" I.R. W/ PL CAP MK'D BAUGHMAN TECH SERV  
 ● = FD 3/4" I.R. AS PER PLAT  
 ⊕ = FD 5/8" I.R. W/ AL CAP MK'D CRRW  
 ⊕ = POINT CALCULATED NOT SET  
 ( ) = CALLS AS PER PLAT



REGISTERED  
 PROFESSIONAL  
 LAND SURVEYOR  
 Glenn S. Baughman  
 OREGON  
 JULY 14, 1981  
 GLENN S. BAUGHMAN  
 536

NARRATIVE

THE PURPOSE OF THIS SURVEY WAS TO MONUMENT THAT PROPERTY CONTAINED IN INST. NO. 75-8417 OF THE DOUGLAS COUNTY DEED RECORDS. THE NORTH-WESTERLY BOUNDARY WAS CONTROLLED BY ORIGINAL POINTS FD. WITH THE EXCEPTION OF THAT CORNER ILLUSTRATED IN THE BLOW UP. WE PRORATED THIS CORNER IN AND USED THAT FOR THE CORNER. THE SOUTHEASTERLY BOUNDARY WAS CONTROLLED BY CALCULATING THE CENTERLINE POSITION FROM THE FD. R/W POINTS AND THEN COMPUTING THE POSITIONS OF THE CORNERS LOTS 8 & 9 FROM THE DOUGLAS COUNTY ROAD DEPT. RECORDS TAKEN AT THE TIME OF CONSTRUCTION TO TIE PROPERTY CORNERS THAT WOULD BE DESTROYED IN THE COURSE OF CONSTRUCTION. WE THEN CALCULATED THE CORNERS FROM THE DESCRIPTION AND SET THE CORNERS. THIS WORK WAS PERFORMED BY K. DEGROOT AND M. REPOSA USING A WILD T1 THEODOLITE AND A TOPCON EDM. CALCULATIONS AND DRAFTING WAS PERFORMED BY G. BAUGHMAN.

COUNTY SURVEYORS FILE DATA  
 DO NOT REMOVE FROM OFFICE

MAP FILE M116-52