

REGISTERED
PROFESSIONAL
LAND SURVEYOR

Ken W. Hoffine

OREGON
JULY 18, 1987
KEN W. HOFFINE
2291

COUNTY SURVEYORS FILE DATA
DO NOT REMOVE FROM OFFICE



LONE ROCK TIMBER CO.

P.O. BOX 1127 ROSEBURG, OREGON 97470

SECTION 16, TOWNSHIP 23 SOUTH, RANGE 6 WEST, W.M.

BRUSH CREEK HEADWATERS SURVEY DOUGLAS COUNTY, OREGON

Drawn by: Ken Hoffine-Bill Warren

SCALE: 1" = 500 ft.

DATE: AUG. 1990

SW Corner of Section 16

Found: 1957 BLM 3" Brass cap - 1 foot above ground with Haine's T-bar, bears N48°E 16.3 ft. 1 1/2 ft. above ground, bent in Southerly direction, and the following accessories.

- 34" Doug-fir bears N66°E 11.2 ft., well healed face and 3 tags.
 - 29" original Doug-fir bears N20°W 19.8 ft., scribe marks visible facing towards Haine's T-bar 2 tags
 - 19" Doug-fir bears N25°W 21.5 ft., scribe visible, 3 tags
 - 24" WRC bears S52°E 23.7 ft., well healed and BLM tag.
 - 12" Yew bears S42°E 37.5 ft., scribes visible and BLM tag.
 - 15 1/2" Doug-fir bears S34°W 38.8 ft., well healed and BLM tag.
- Corner lies on very steep SE slope approx. 260 ft. North of creek.

SE Corner of Section 16

Found: 1957 2 1/2" BLM Brass cap on a 2" pipe 2 ft. above ground.

- 20" Hemlock bears N41°E 16.2 ft., well healed, BLM tag.
 - 25" Hemlock bears S32°E 48.5 ft., well healed, 1 tag tree.
 - 17" Hemlock bears S6°W 65.4 ft., well healed, BLM tag.
 - 47" Doug-fir bears N55°W 20.3 ft., bark scribe visible, 3 BLM tags.
(REC. N56°E (1957) 40 LINKS
1883 REC. N31°W 40 LINKS)
 - 19" Hemlock bears N65°W 52.8 ft., well healed, BLM tag.
- Corner is a loose pipe in large boulders in old rock slide on east facing slope, approx. 2 chains west of creek.

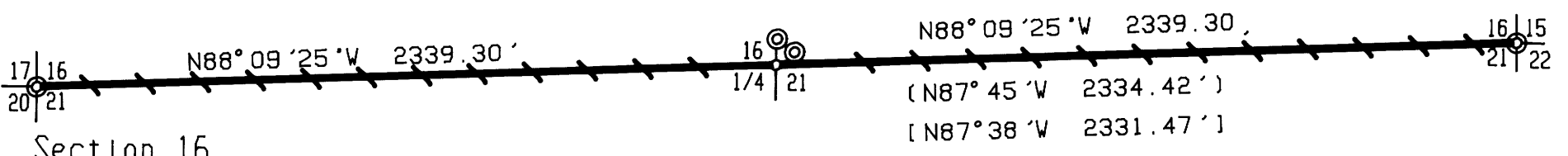
NARRATIVE:

- 1) The purpose of this survey was to establish by proper proportioning the South 1/4 corner of Section 16 between remonumented original corners at the Southwest and Southeast. South 1/4 corner was established by BLM and found to be 35 links in error to the Northeast from proper positioning.
- 2) The basis of bearing is Solor Observation
- 3) The instruments used in this survey were a Lietz set 2 Total Station, an IBM compatible AT, w/Generic Cadd and Traverse PC software.
- 4) Deed record pertaining to this survey # 89-18044 filed with the Douglas County Clerk.
- 5) Relative error of closure of Survey is greater than 1:29,000 adjusted by compass rule.

FILED

dl
SEP 6 1990 *d*

COUNTY SURVEYOR
DOUGLAS COUNTY, ORE.



South 1/4 Section 16

Set: 2" Aluminum cap 0.7 ft. above ground on a 5/8" x 36" Iron rod from which a Haine's T-bar bears N2°E 5.16 ft. and BLM Brass cap bears N5°W 22.14 ft. and the following accessories, distances to aluminum rail at mid base of tree.

- 55" Doug-fir bears S46°E 25.89 ft. with BLM tag referencing Haine's T-bar, bark scribed.
1/4 S21 BT, 1 tag with reference to my corner.
- 43" Doug-fir bears N37°E 32.44 ft. with BLM tag referencing Haine's T-bar, bark scribed.
1/4 S16 BT, 1 tag with reference to my corner.
- 9" Doug-fir bears N62°W 13.79 ft.
I scribe 1/4 S16 BT and tag tree.
- 10" Doug-fir bears S44°W 25.71 ft.
I scribe 1/4 S16 BT and tag tree.

Corner lies on small west sloping spur ridge on steep side slope approx. 40 ft. below flat bench in roots on downhill side of 5" Doug-fir which I put a location tag on.

LEGEND:

- ⊙ - Found Monument size and type noted.
- - Set 5/8" x 36" I. Rod w/ 2" Aluminum cap, set approx. 0.4 ft. above ground.
- — — — — - Lines marked; blazed, painted ribboned & tagged.
- () - BLM Measurements, chains converted to feet.
- [] - Wilford Haine's, Record Survey Douglas County Surveyors Office

MAP FILE M110-53

MAP FILE M110-53