

FILED

AUG 23 1990

SURVEY FOR COUNTY SURVEYOR
DOUGLAS COUNTY, ORE.

U.S. NATIONAL BANK OF OREGON

SOUTH 1/2, SEC. 26, T. 22 S., R. 6 W., W. M.
DOUGLAS COUNTY, OREGON
AUGUST 13, 1990
SCALE: 1" = 400'

NARRATIVE

THE PURPOSE OF THIS SURVEY WAS TO ESTABLISH THE BOUNDARY BETWEEN PROPERTY OWNED BY THE CITY OF DRAIN AND PROPERTY MANAGED BY U.S. BANK IN THE SOUTH HALF OF SECTION 26.

IN ORDER TO PERFORM THE SURVEY IT WAS NECESSARY TO SUBDIVIDE SECTION 26. WE SUBDIVIDED THE SECTION FROM THE FOUND MONUMENTS AND BY REESTABLISHING THE POSITION OF THE MISSING EAST QUARTER CORNER BY PROPORTIONATE MEASUREMENT. A THOROUGH SEARCH WAS MADE FOR THIS CORNER AND WE WERE UNABLE TO FIND ANY EVIDENCE. WE DID NOT REESTABLISH THE CORNER IN THIS SURVEY.

THE BOUNDARY LINES AS ESTABLISHED ALL FALL ALONG SIXTEENTH LINES. THE FOUR SIXTEENTH CORNERS WERE SET AT ANGLE POINTS IN THE BOUNDARY AND BEARING TREES BLAZED AND SCRIBED AS SHOWN.

REGISTERED
PROFESSIONAL
LAND SURVEYOR
James A. Branch
OREGON
SEPT. 23, 1977
JAMES A. BRANCH
1138

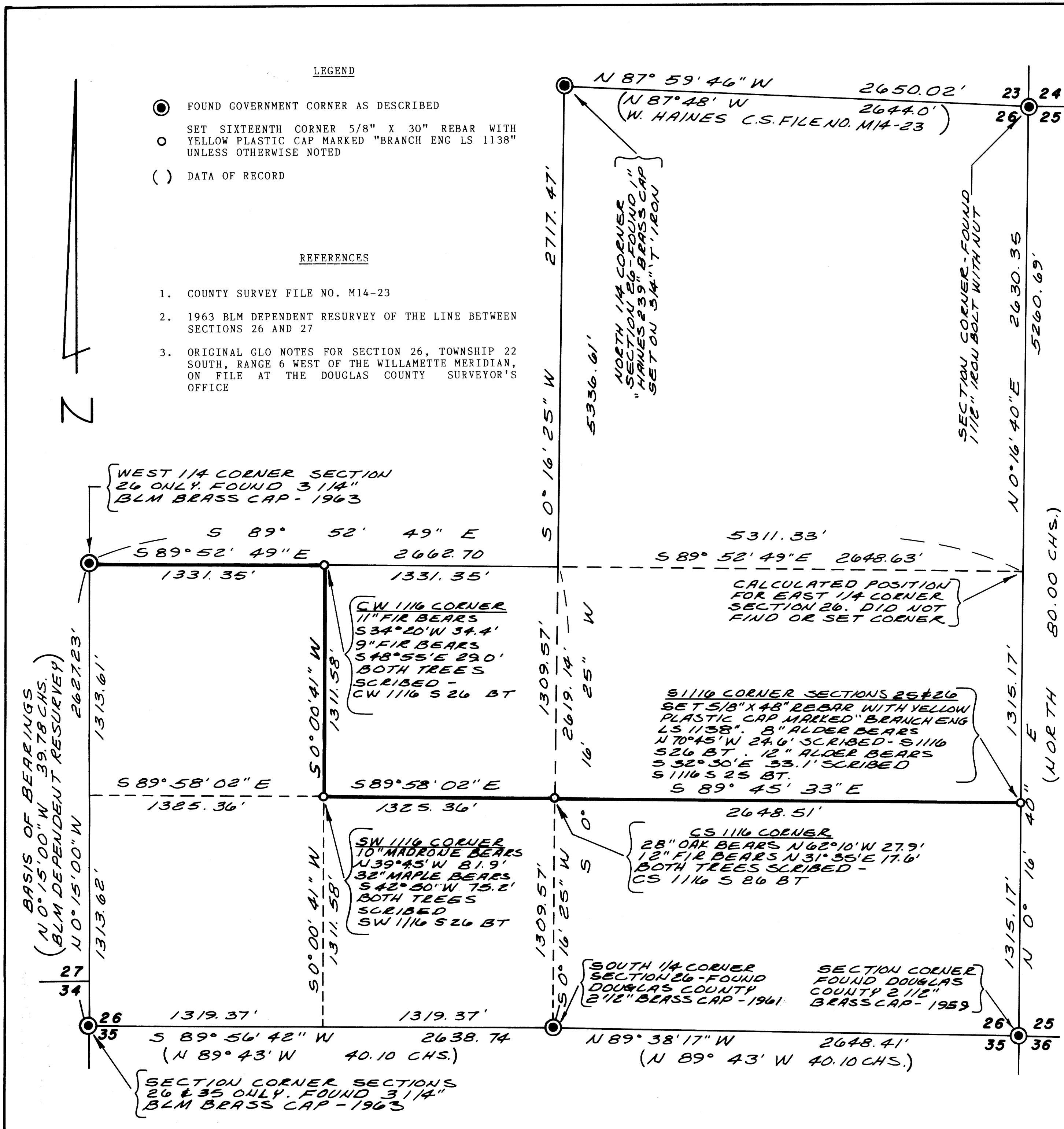
BRANCH ENGINEERING
212 O Street
SPRINGFIELD, OREGON 97477
(503) 746-0637

LEGEND

- FOUND GOVERNMENT CORNER AS DESCRIBED
- SET SIXTEENTH CORNER 5/8" X 30" REBAR WITH YELLOW PLASTIC CAP MARKED "BRANCH ENG LS 1138" UNLESS OTHERWISE NOTED
- () DATA OF RECORD

REFERENCES

1. COUNTY SURVEY FILE NO. M14-23
2. 1963 BLM DEPENDENT RESURVEY OF THE LINE BETWEEN SECTIONS 26 AND 27
3. ORIGINAL GLO NOTES FOR SECTION 26, TOWNSHIP 22 SOUTH, RANGE 6 WEST OF THE WILLAMETTE MERIDIAN, ON FILE AT THE DOUGLAS COUNTY SURVEYOR'S OFFICE



C S File 63/48
Map File M14-23

C S File 63/48
Map File M14-23

M116 47

FILED

AUG 23 1990

OREGON CORNER RESTORATION FORM

Section 26 Township 22S Range 6W

County DOUGLAS Date 8/13/90

COUNTY SURVEYOR
DOUGLAS COUNTY, ORE.

Corner Designation

CENTER WEST 1116
CORNER SECTION 26

- Condition Report Only
- Not Found
- Renewed
- Unrecorded
- Surveyed In
- Referenced Out

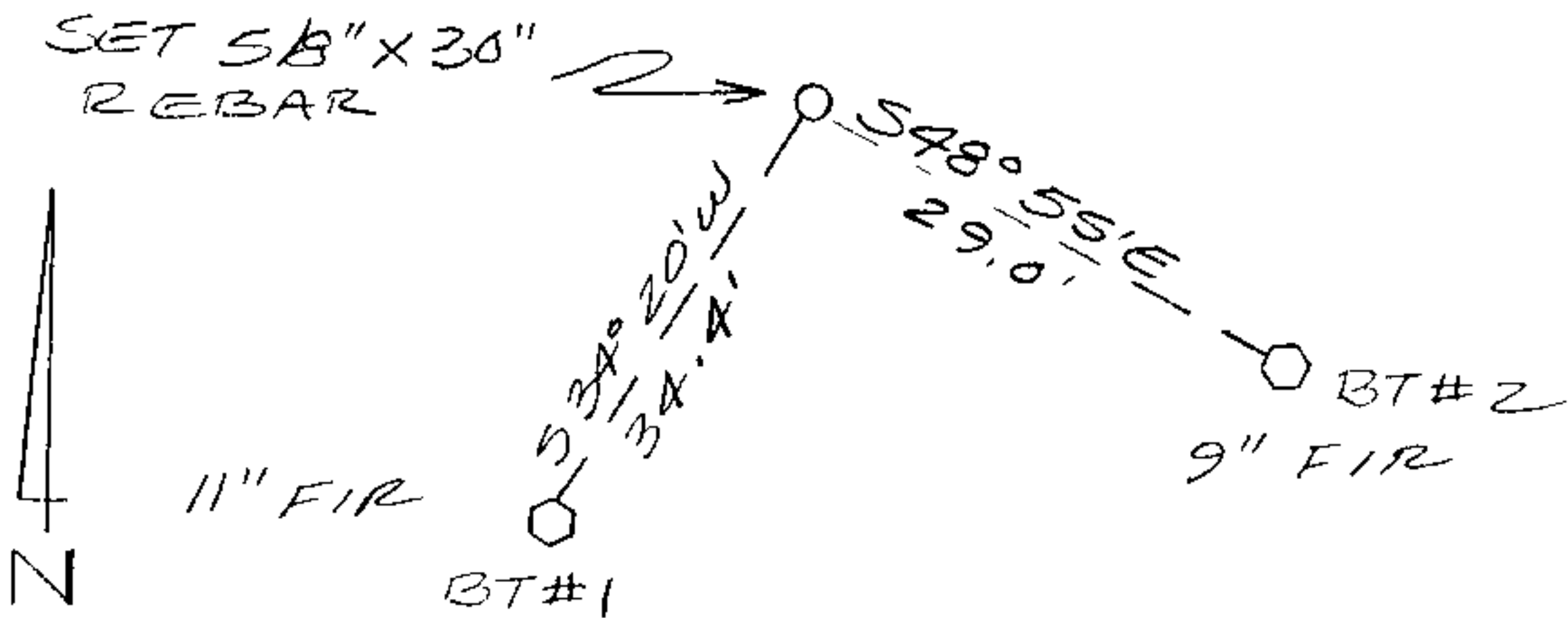
Previous Renewals/Surveys, etc. NONE

Monument(s) & Accessories Found: (Condition and Source)

NONE

Monument Detail

Sketch



Monument Set (Procedures and Description)

SET 5/8" X 30" REBAR WITH YELLOW PLASTIC CAP MARKED "BRANCH ENG LS 1138". CORNER WAS SET ON LINE AT THE MIDPOINT BETWEEN THE COMPUTED CENTER QUARTER AND THE WEST QUARTER CORNERS.

New Accessories

1) 11" FIR SCRIBED "CW 1116 S 26 BT" REAR S 34° 20' W 34.4 FEET.

2) 9" FIR SCRIBED "CW 1116 S 26 BT" BEARS S 48° 55' E 29.0 FEET.

Location & Comments

Surveyor's Seal

Compass Declination

Firm/Agency BRANCH ENGINEERING

Address 212 Q STREET SPRINGFIELD, OR

Party Chief G. HOFFMAN

Notes

Witness L CARSON

REGISTERED PROFESSIONAL LAND SURVEYOR

James A. Branch
OREGON
SEPT 23 1977
JAMES A. BRANCH
1138

M 110-47

FILED

OREGON CORNER RESTORATION FORM

AUG 22 1990

Section 26 Township 22S Range 6W

County DOUGLAS Date 8/13/90

COUNTY SURVEYOR
DOUGLAS COUNTY, ORE.

Corner Designation

SOUTH 1/16 CORNER
SECTION 25 & 26

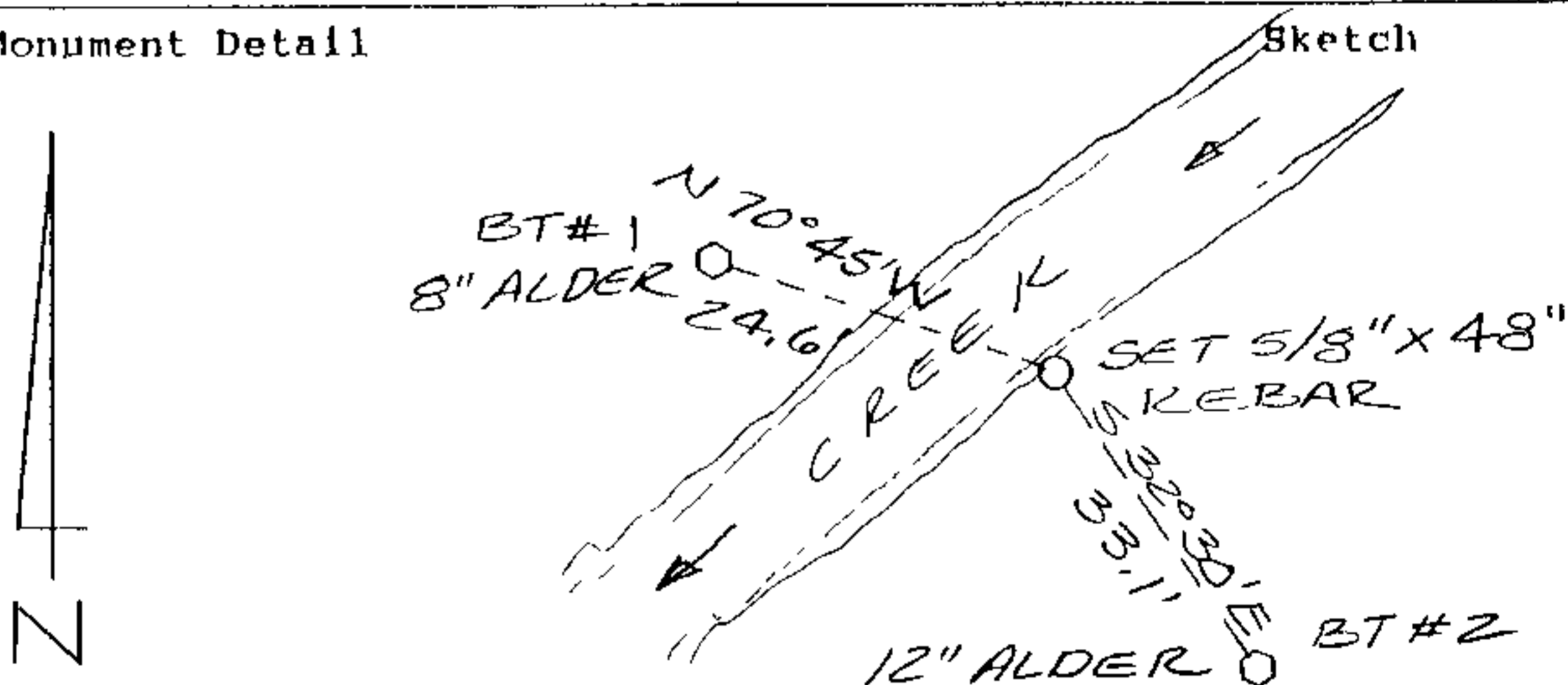
- Condition Report Only
- Not Found
- Renewed
- Unrecorded
- Surveyed In
- Referenced Out

Previous Renewals/Surveys, etc. NONE

Monument(s) & Accessories Found: (Condition and Source)

NONE

Monument Detail



Monument Set (Procedures and Description)

SET 5/8" X 30" REBAR WITH YELLOW PLASTIC CAP MARKED "BRANCH ENGL S 1138". CORNER WAS SET ON LINE BETWEEN NE COR. AND SE COR. OF SECTION 26 AT ITS PROPER PROPORTIONED DISTANCE.

New Accessories

1) 8" ALDER SCRIBED "S 1116 S 26 BT" BEARS N 70° 45' W 24.6 FEET.

2) 12" ALDER SCRIBED "S 1116 S 25 BT" BEARS S 32° 30' E 33.1 FEET.

Location & Comments

CORNER FALLS AT THE SOUTHERLY
EDGE OF AN ENGINEERING
APPROXIMATELY 212 Q STREET
2.0 FOOT SPRINGFIELD, OR
11/12 CREEK. Party Chief G. HOFFMAN

Compass Declination
Firm/Agency
Address
Party Chief

Surveyor's Seal

REGISTERED
PROFESSIONAL
LAND SURVEYOR

James A. Branch
OREGON
SEPT 23, 1977
JAMES A. BRANCH
1138

Notes
Witness L. LARSON

63/48-3b

M 110-47

FILED

3/23
AUG 22 1990

OREGON CORNER RESTORATION FORM

Section 26 Township 22S Range 6W

County DOUGLAS Date 8/13/90

COUNTY SURVEYOR
DOUGLAS COUNTY, ORE.

Corner Designation

CENTER SOUTH 1116
CORNER SECTION 26

- Condition Report Only
- Not Found
- Renewed
- Unrecorded
- Surveyed In
- Referenced Out

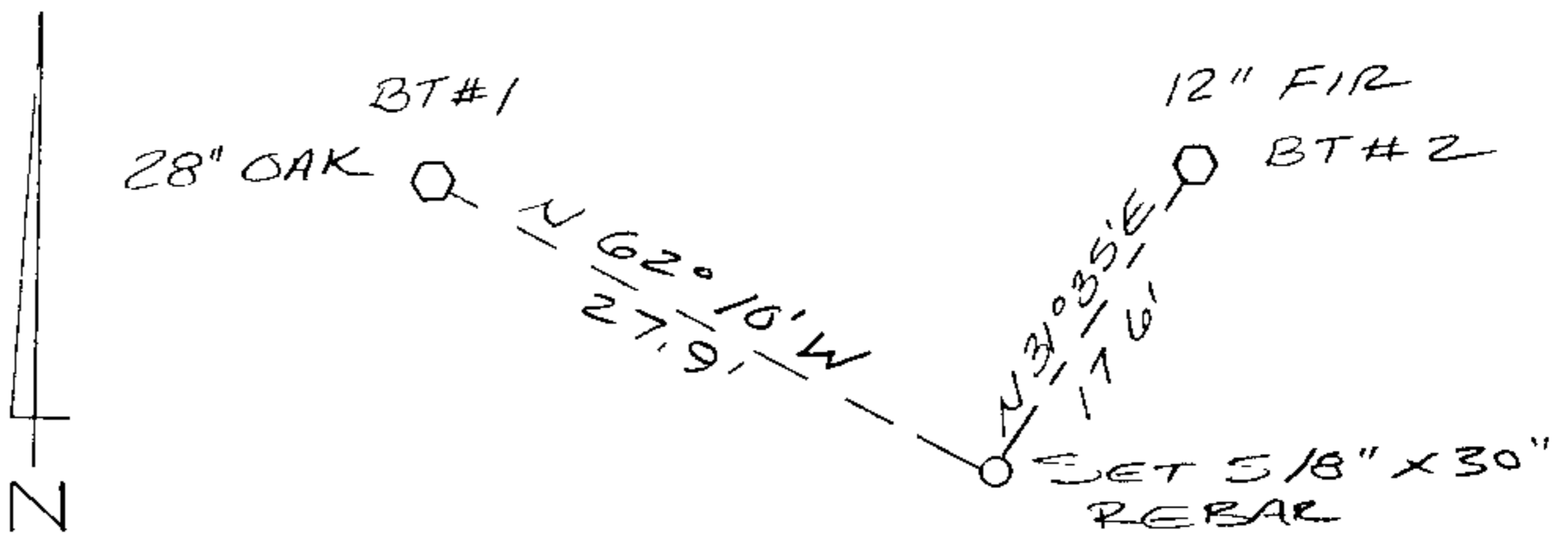
Previous Renewals/Surveys, etc. NONE

Monument(s) & Accessories Found: (Condition and Source)

NONE

Monument Detail

Sketch



Monument Set (Procedures and Description)

SET 5/8" X 30" REBAR WITH YELLOW PLASTIC CAP MARKED "BRANCH ENG LS 1138". CORNER WAS SET ON LINE AT THE MIDPOINT BETWEEN THE CALCULATED CENTER QUARTER AND THE SOUTH QUARTER SECTION CORNERS.

New Accessories

- 1) 28" OAK SCRIBED "CS 1116 S 26 BT BEARS N 62° 10' W 27.9 FEET
- 2) 12" FIR SCRIBED "CS 1116 S 26 BT BEARS N 31° 35' E 17.6 FEET

Location & Comments

Surveyor's Seal

Compass Declination _____

Firm/Agency BRANCH ENGINEERING

Address 212 Q STREET SPRINGFIELD, OR

Party Chief G. HOFFMAN

Notes _____

Witness L. CARSON

REGISTERED PROFESSIONAL LAND SURVEYOR

James H. Branch
OREGON
SEPT 23 1877
JAMES A BRANCH
1138

63/48-34

M 110-47

FILED

AUG 23 1990

OREGON CORNER RESTORATION FORM

Section 26 Township 22S Range 6W

County DOUGLAS Date 8/13/90

COUNTY SURVEYOR
DOUGLAS COUNTY, ORE.

Corner Designation

SOUTHWEST 1/16 CORNER
SECTION 26

- Condition Report Only
- Not Found
- Renewed
- Unrecorded
- Surveyed In
- Referenced Out

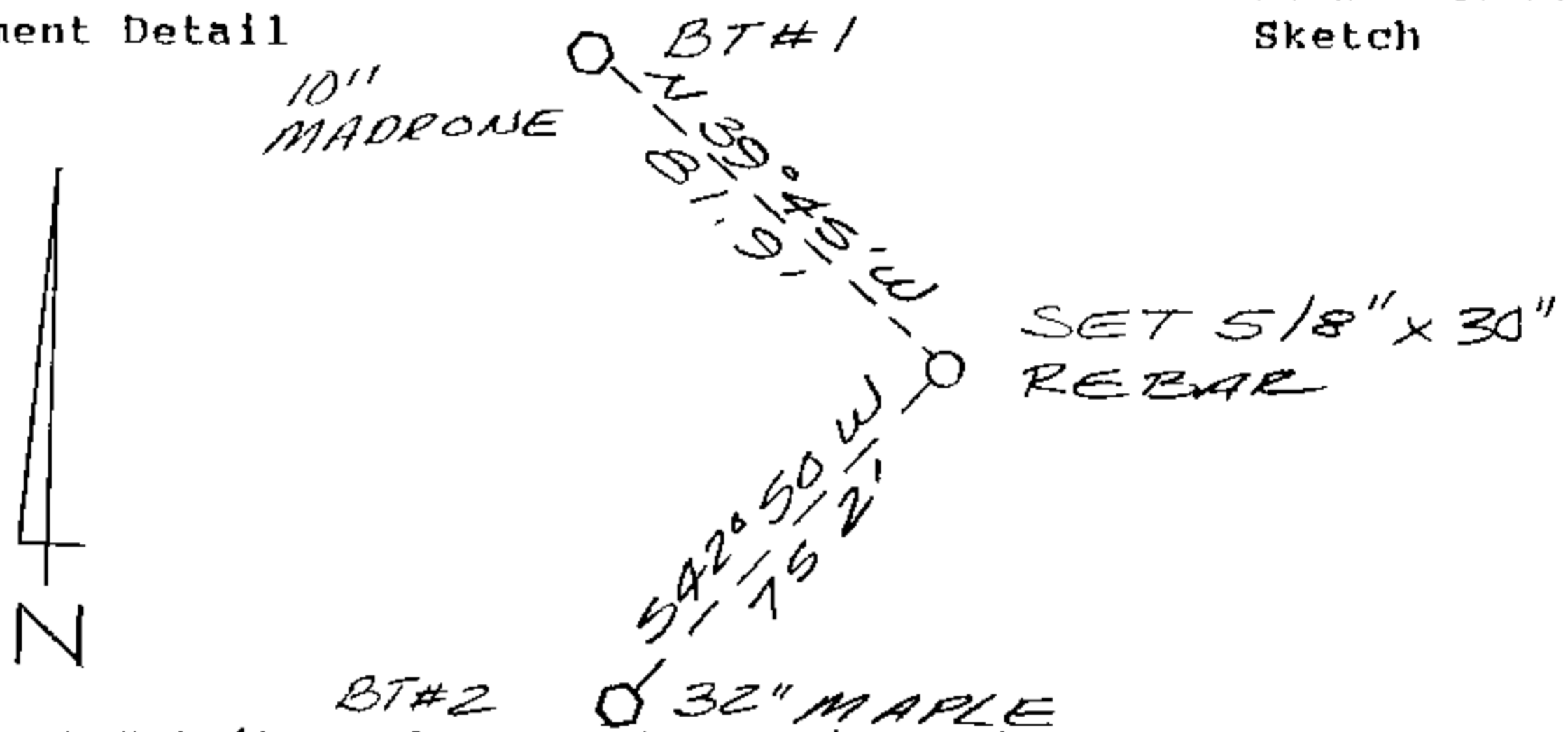
Previous Renewals/Surveys, etc. NONE

Monument(s) & Accessories Found: (Condition and Source)

NONE

Monument Detail

Sketch



Monument Set (Procedures and Description)

SET 5/8" x 30' REBAR WITH YELLOW PLASTIC CAP
MARKED "BRANCH ENG LS 1138". CORNER WAS
SET AT THE STRAIGHT LINE INTERSECTION
POINT BETWEEN THE S 1/16 AND CS 1/16
AND THE CW 1/16 AND W 1/16 S 26

New Accessories

- 1) 10" MADRONE SCRIBED "SW 1/16 S 26 BT"
BEARS N 39° 45' W 81.9 FEET
- 2) 32" MAPLE SCRIBED "SW 1/16 S 26 BT"
BEARS S 42° 50' W 75.2 FEET.

Location & Comments

Surveyor's Seal

Compass Declination _____

Firm/Agency BRANCH
ENGINEERING

Address 212 Q STREET
SPRINGFIELD, OR

Party Chief G. HOFFMAN

Notes _____

Witness L LARSON



63/48-3d