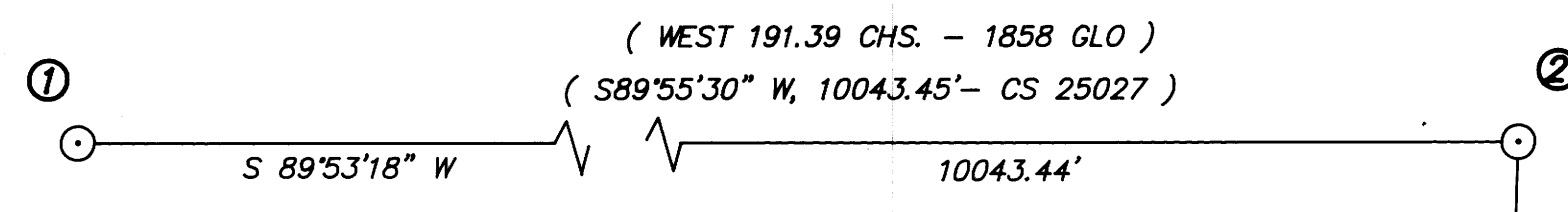




BASIS OF BEARING : SOLAR OBSERVATION

SCALE : 1" = 200'



① MEANDER CORNER 34 & 3  
 FOUND : 2" IRON PIPE & CROWN "Z" BRASS CAP  
 16" SPRUCE STUB, N7°W, 7.0' TO FACE - ORIGINAL BT  
 20" FIR, N15°E, 27.2'  
 14" FIR, N 64°W, 21.7'

② 1/4 CORNER 36 & 1  
 FOUND : 2 1/2" IRON PIPE & BRASS CAP " PLS 1457 "  
 16" SPRUCE, N 53°E, 51.9'  
 45" SPRUCE, S 83°W, 64.0'

FILED  
 AUG 1 1990 TF  
 COUNTY SURVEYOR  
 DOUGLAS COUNTY, ORE TF

NARRATIVE

THIS SURVEY WAS MADE IN JULY AND AUGUST 1989 AND JUNE 1990 BY DANIEL W. BAKER OF PEEL BAKER LAND SURVEYING, INC. THE PURPOSE OF THIS SURVEY WAS TO LOCATE AND MARK IN THE FIELD THE NORTH LINE OF TAX LOT 900 IN SECTION 1, T20S, R12W, W.M. FOR DAVIDSON INDUSTRIES. A KERN K1M THEODOLITE AND DM 502 E.D.M. WERE USED TO PERFORM THIS SURVEY. RANDOM TRANSIT TRAVERSES, WITH A MINIMUM ERROR OF CLOSURE OF 1'/44,000' WERE RUN BETWEEN FOUND CORNERS FOR CONTROL AND ALSO RUN ALONG THE TRUE PROPERTY LINE. OFFSETS WERE CALCULATED FROM THE TRAVERSE LINE ALONG THE PROPERTY LINE AND USED TO MARKED THE TRUE PROPERTY LINE. THE TRUE PROPERTY LINE WAS MARKED IN THE FIELD WITH 6 FOOT STEEL FENCE POSTS SET AT RANDOM INTERVALS ALONG THE TRUE LINE AND BY BLAZING TREES ON BOTH SIDES OF THE TRUE PROPERTY LINE. THE CENTER 1/4 CORNER, CENTER-WEST 1/16 CORNER, AND PROPERTY CORNER ON THE COUNTY LINE WERE SET BY THE DOUGLAS COUNTY SURVEYORS OFFICE ( M 101-51 ). THE NORTH 1/4 CORNER, THE NORTHWEST 1/16 CORNER AND THE C-S NORTHWEST 1/64 CORNER WERE SET IN C.S. 25027, IN THE LANE COUNTY SURVEYORS OFFICE. THE MEANDER CORNER BETWEEN SECTIONS 34 AND 3 WAS AN ORIGINAL CORNER, MONUMENTED IN C.S. 18761, LANE COUNTY SURVEYORS OFFICE. THE TWO DEED CORNERS SET IN THIS SURVEY WERE SET AT DEED CALLS FROM THE DEED RECORDED ON R548-62511, LANE COUNTY DEEDS AND RECORDS. THE NORTHEAST WAS SET ON THE NORTH-SOUTH CENTERLINE OF THE NORTHWEST 1/4 AT CALL DISTANCE FROM THE CENTER-WEST 1/16 CORNER. THE CORNER SET ON THE RAILROAD RIGHT-OF-WAY WAS SET AT DEED CALL BEARING, WEST, FROM THE NORTHWEST DEED CORNER. ALL CORNERS SET IN IN THIS SURVEY WERE MONUMENTED WITH 5/8" X 36" REBARS WITH YELLOW PLASTIC CAPS MARKED " D.W. BAKER PLS 1978 ".

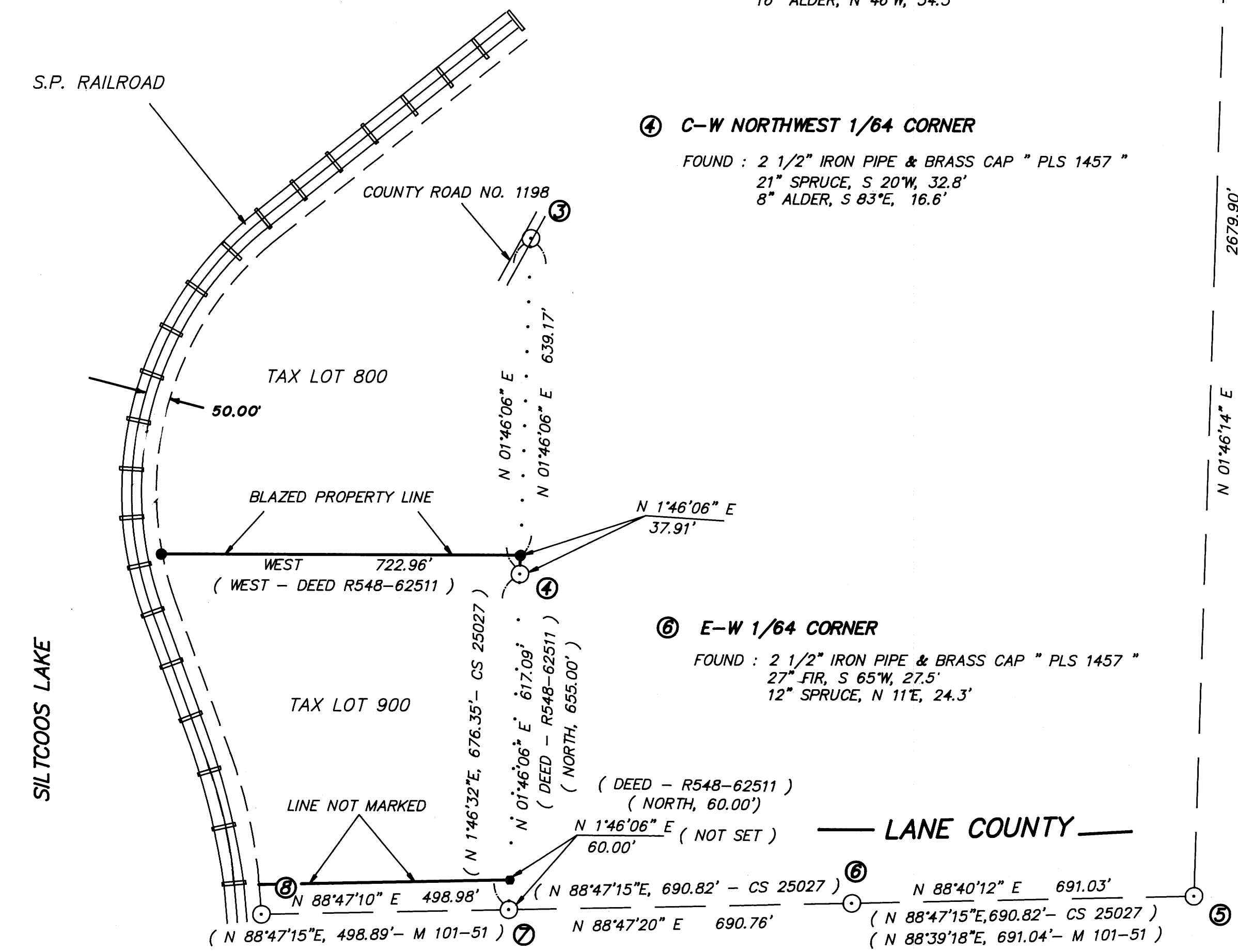
③ NORTHWEST 1/16 CORNER  
 FOUND : 1 3/8" IRON ROD IN ROAD  
 12" SPRUCE, S 9 1/2° W, 29.4'  
 16" ALDER, N 46°W, 34.3'

④ C-W NORTHWEST 1/64 CORNER  
 FOUND : 2 1/2" IRON PIPE & BRASS CAP " PLS 1457 "  
 21" SPRUCE, S 20°W, 32.8'  
 8" ALDER, S 83°E, 16.6'

⑥ E-W 1/64 CORNER  
 FOUND : 2 1/2" IRON PIPE & BRASS CAP " PLS 1457 "  
 27" FIR, S 65°W, 27.5'  
 12" SPRUCE, N 11°E, 24.3'

⑤ CENTER 1/4 CORNER  
 FOUND : 1 1/2" IRON PIPE & DOUGLAS CO. BRASS CAP " 1989 "  
 10" SPRUCE, N 36 1/4°E, 32.2'  
 12" ALDER, S 34°E, 17.4'  
 24" MAPLE, S 69 1/2°W, 29.7'

NOTE : 2 1/2" IRON PIPE & BRASS CAP " PLS 1457 "  
 BEARS S 2°52'18"E, 3.32'



REGISTERED  
 PROFESSIONAL  
 LAND SURVEYOR  
 Daniel W. Baker  
 OREGON  
 JULY 16, 1982  
 DANIEL W. BAKER  
 1978

LEGEND

- CORNERS FOUND AND USED FOR CONTROL
- 5/8" X 36" REBARS SET WITH YELLOW PLASTIC CAPS mkd " D.W. BAKER PLS 1978 "
- PROPERTY LINES
- S. P. RAILROAD

⑧ COUNTY LINE MONUMENT  
 FOUND : 1 1/2" IRON PIPE & DOUGLAS CO. BRASS CAP  
 8" SPRUCE S 37 1/4°E, 8.2'  
 11" SPRUCE N 63 1/2°W, 11.4'  
 NOTE : 5/8" REBAR & DOUGLAS CO. ALUM. CAP  
 BEARS S 1°32'30"E, 28.89'  
 5/8" REBAR & DOUGLAS CO. ALUM. CAP  
 BEARS N 11°38'21"W, 77.70'

⑦ CENTER-WEST 1/16 CORNER  
 FOUND : 1 1/2" IRON PIPE & DOUGLAS CO. BRASS CAP " 1989 "  
 28" SPRUCE, S 19°E, 15.4'  
 28" FIR, S 67°W, 8.6'

NOTE : 2 1/2" IRON PIPE & BRASS CAP " PLS 1457 "  
 BEARS S 1°22'12"W, 4.75'

SURVEY IN  
 NW 1/4 SECTION 1, T20S, R12W, W.M.  
 LANE AND DOUGLAS COUNTIES, OREGON  
 FOR  
 DAVIDSON INDUSTRIES, INC.  
 BY  
 PEEL BAKER LAND SURVEYING, INC.  
 1385 OAK STREET-SUITE 3 EUGENE, OREGON 97401  
 PHONE (503) 343-7243  
 JUNE 15, 1990

MAP FILE M114-42

MAP FILE M114-42