

COUNTY SURVEYORS FILE DATA
DO NOT REMOVE FROM OFFICE

REGISTERED
PROFESSIONAL
LAND SURVEYOR

Ken W. Hoffine

OREGON
JULY 16, 1987
KEN W. HOFFINE
2291

LONE ROCK TIMBER CO.

P.O. BOX 1127 ROSEBURG, OREGON 97470

SECTION 22, TOWNSHIP 23 SOUTH, RANGE 4 WEST, W.M.

DOUGLAS COUNTY, OREGON

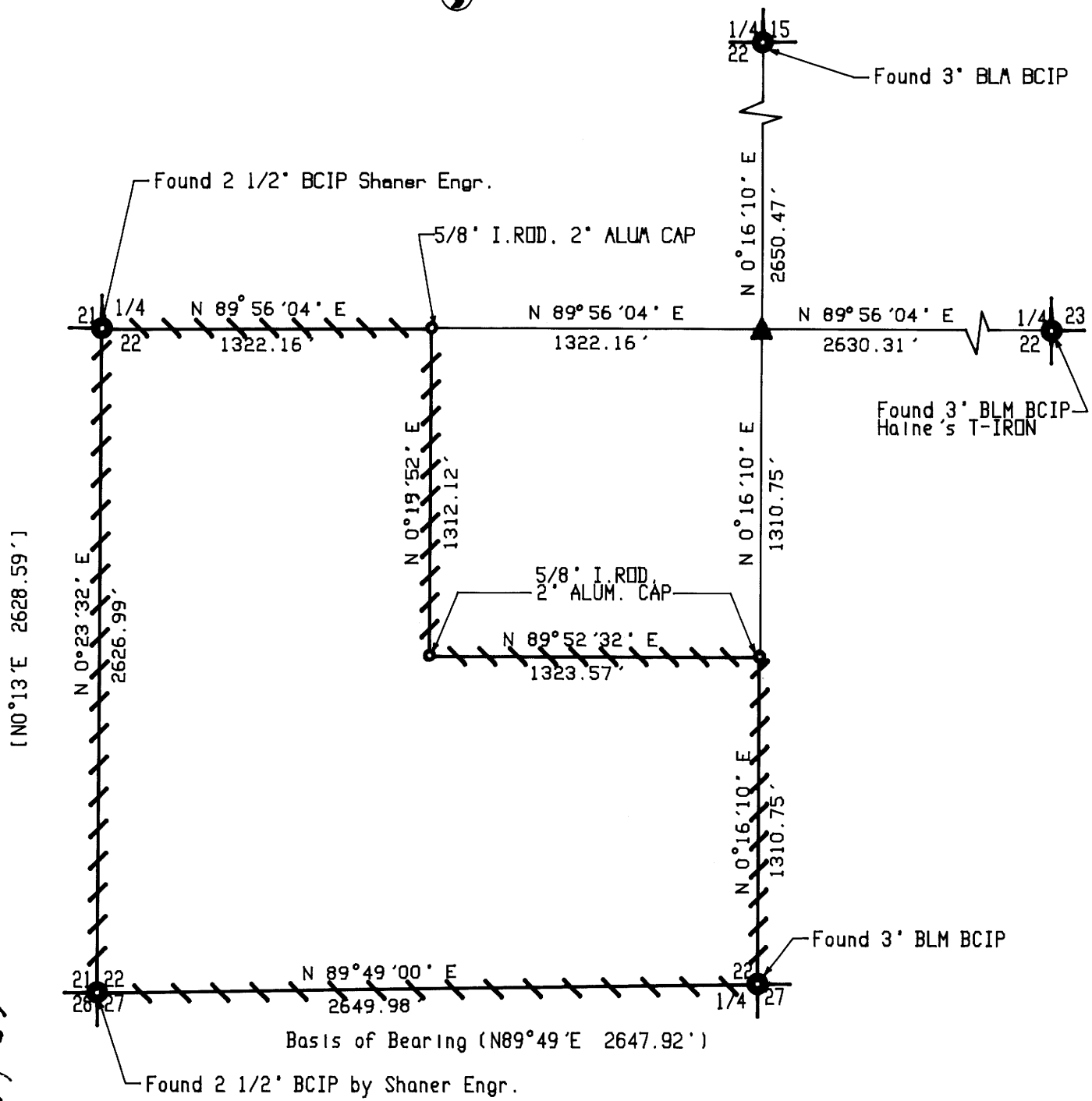
LANE CR. ELKHEAD SURVEY, J 23-4-22 TRACT

Drawn by: Ken Hoffine-Bill Warren

SCALE: 1" = 600 ft.

DATE: JULY 1990

FILE 63/106(N)
M110-41



NARRATIVE:

- 1) The basis of bearing is by BLM 1976 Record Survey
- 2) The purpose of this survey was to establish and mark boundaries as shown hereon.
- 3) The instruments used in this survey were a Lietz set 2 Total Station, and an IBM compatible AT, w/Generic Cadd and Traverse PC software.
- 4) Assisting personnel was Gary Angiolet, Ken Engle & Jerry Ragon
- 5) Deed record pertaining to this survey is # 89-18044 filed with Douglas County Clerk.
- 6) Relative error of closure of Survey is greater than 1:18,000 adjusted by compass rule.
- 7) Written notes including corner notes and background information are filed in Douglas County Survey Records Book FILE 63 . Page ENV 106

FILED
[Signature]
JUL 30 1990
COUNTY SURVEYOR
DOUGLAS COUNTY, OREGON

LEGEND:

- ⊙ - Found Monument size and type noted.
- - Set 5/8"x 36" I. Rod w/ 2" Aluminum cap, set approx. 0.4 ft. above ground.
- ▲ - Calculated corner positions.
- ▨ - Lines marked
- - Projected lines.
- () - BLM Measurements, chains converted to feet.
- [] - Shaner Engineering, Record Survey M49-55, Douglas County Surveyors Office

MAP FILE M110-41
C.S. FILE 63/106(N)

M110-41

LONE ROCK TIMBER CO.
PO BOX 1127
ROSEBURG, OREGON 97470

FILED

JUL 30 1990 TF

LANE CREEK, ELKHEAD SURVEY
SECTION 22 T23S, R4W, W.M.
DOUGLAS COUNTY, OREGON

COUNTY SURVEYOR
DOUGLAS COUNTY, ORE.

General Information

This survey was conducted to establish property corners and property lines for timber cutting purposes. Equipment used was a Lietz Set 2 Total Station and IBM compatible AT computer using Traverse PC and Generic Cadd software. The survey was initiated at the S 1/4 corner of the section. Proper and legal survey methods were used to tie into the S 1/4, N 1/4, E 1/4, W 1/4 and the SW section corner to establish the CW 1/16, CS 1/16 and the SW 1/16 corners. Closed traverses were run for the subdivision with closures greater than 1:18,000. Bearings are based on BLM 1976 record survey between the SW section corner and S 1/4 of Section 22. See accompanying survey map filed with Douglas County Surveyors Office, Roseburg Oregon. Map# M110-41

Corner Information

The following is a record of all corners found or set during the course of the survey:

S 1/4 Corner

Found: 1976 3" BLM brass cap and the following accesories:

- 8" Doug-fir bears N 80½° W , 5.0 feet. Well healed face and BLM tag.
- 10" Doug-fir bears S 1½° E, 4.6 feet. Well healed face and BLM tag.
- 8" Doug-fir bears S 73½° E, 13.4 feet. Scribes visible on new face
- 6" Doug-fir bears N 20° E, 11.1 feet. Scribes visible on on new face.
- 3/4" iron pipe bears N 43° E, 28.7 ft. Source unknown.

Corner lies on on West slope approximately 2 chains west of newly constructed road.

N 1/4

Found: 1976 3" BLM brass cap 0.3 feet above ground, 1" iron pipe alongside and the following accessories.

- 10" Doug-fir bears N 45° E, 16.4 feet. Well healed scar and BLM tag.
- 5" Doug-fir bears S 70° E., 27.5 feet. Well healed scar and BLM tag.
- 49" Doug-fir bears N 5° E, 13.0 feet. Old heavy axe work and very old faded out BLM tag.

Corner lies on 30% north slope approximately 20 feet east of fence.

WEST 1/4

Found: 1974 2½" brass cap set by Shaner Engineering and the following accessories:

- 19" Doug-fir bears N 58° W, 52.6 feet. Well healed and BLM tag.
- 8" Doug-fir bears West, 4.2 feet. I tag tree.
- PP&L power pole #28050 bears S 73° E, 32.8 feet.
- PP&L power pole #28043 bears S 66° E, 49.6 feet.

Corner lies on northwest edge of power utility R/W next to a piece of broken metal electric insulator approximately 30 feet south of east-west fence line.

E 1/4

Found: 1976 3" BLM brass cap 0.2 feet above ground, Wilford Haine's "T" iron alongside and the following accessories:

- 13" Doug-fir bears S 85° E, 46.5 feet, well healed with BLM tag.
- 22" Grand-fir bears S 66° W, 20.2 feet. Well healed and two BLM tags.

Corner lies on top of on flat small spur ridge, course SW.

SW section corner

Found: 1974 2½" brass cap set by Shaner Engineering and the following accessories:

- 10" Doug-fir bears S 66° W, 43.1 feet. Well Healed with BLM tag. I tag tree also.

- 14" Doug-fir bears N 62° W, 45.9 feet. Well healed and BLM tag.
- 36" Doug-fir bears N 88° E, 13.0 feet. Well healed and BLM tag.
- 34" Doug-fir bears S 50° E, 18.7 feet. Well healed and BLM tag.

Corner lies at the corner of BLM clearcut to the Southeast on a small flat at the bottom of a South and a West facing slope.

Center-West 1/16

Set: 5/8" by 36" iron rod with aluminum cap 0.4 feet above ground and mark the following accessories:

- 17" Doug-fir bears S 65°08'E to aluminum nail in face and 17.2 feet to an aluminum nail in mid-base of tree. I scribe tree CW 1/16 S22 BT and tag tree.
- 8" Doug-fir bears N 57°05'E to aluminum nail in face and 6.6 feet to aluminum nail in mid-base of tree. I scribe tree CW 1/16 S22 BT and tag tree.

Corner lies on 30% gentle south slope 43 feet west of North-South fence and pasture to the east of fence and approx. 2 chains south of private road.

SW 1/16 corner

Set: a 5/8" iron rod with aluminum cap 0.4 feet above ground and mark the following accessories:

- 11" Grand fir bears N 42°23'W to a aluminum nail in face and 4.9 feet to aluminum nail in middle base of tree. I scribe SW 1/16 S22 BT.
- 6" Doug-fir bears S 66°03'E to a aluminum nail in face and 4.1 feet to aluminum nail in mid-base. I scribe SW 1/16 S22 BT.
- Scribed "SW 1/16" 2 foot high fencepost(source unknown) and old fence corner bears N 82° E, 72 feet.

Corner lies on edge of flat ridge to the SW and a steep drop off 20 feet north of corner.

Center-South 1/16

Set: 5/8" by 36" iron rod with aluminum cap 0.4 feet above ground and mark the following accessories:

- 17" WRC bears S 52° 47' W to a aluminum nail in face and 22.8 feet to aluminum nail in mid-base of tree. I scribe CS 1/16 S 22 BT and tag tree.
- 13" Doug-fir bears N 9° 03' W to a aluminum nail in face 31.6 feet to aluminum nail at mid-base of tree. I scribe CS 1/16 S22 BT and tag tree.
- 1" OD iron pipe(source unknown) bears S 54° E, 20.27 feet.

Corner lies on 30% westerly sideslope approximately 120 ft from SE corner of rolling grass meadow in young timber.



Respectfully Submitted,

Ken W. Hoffine

Ken W. Hoffine O.R.L.S.#2291