

1/4 CORNER 27 & 34
 FND W. HAINES "T" BAR WITH BRASS DISK
 20" FIR STUB, N 36-1/4 W, 26.8' - opened to visible scribing
 60" FIR SNAG, N 67 E, 21.0' - distance to "W" nail

- NARRATIVE -

THIS SURVEY WAS MADE IN JUNE, 1990 BY DONALD L. PEEL OF PEEL BAKER LAND SURVEYING, INC., 1385 OAK STREET #3, EUGENE, OREGON. THE PURPOSE OF THIS SURVEY WAS TO LOCATE AND MARK THE SOUTH AND EAST LINES OF THE NW1/4SW1/4 SECTION 34, T22S, R4W, W.M. A WILD T1000 THEODOLITE AND DISS E.D.M. WERE USED TO PERFORM THIS SURVEY. THE PRIMARY CONTROL TRAVERSES TO THE NORTH, SOUTH, EAST AND WEST 1/4 CORNERS WAS ESTABLISHED BY ME IN A JULY 1988 SURVEY (C.S. M106-59). THE BEARINGS IN SAID SURVEY WERE BASED ON A SOLAR OBSERVATION. THE SOUTHWEST SECTION CORNER WAS FOUND AND USED FOR CONTROL. A CLOSED RANDOM TRAVERSE WAS RUN AS NEAR AS POSSIBLE TO THE PROPERTY LINES THAT WERE TO BE BLAZED. OFFSETS FROM THE RANDOM TRAVERSE LINE TO THE TRUE PROPERTY LINE WERE CALCULATED AND USED TO DETERMINE THE POSITION OF THE TRUE LINE. THE TRUE PROPERTY LINE WAS MARKED IN THE FIELD BY BLAZING TREES (BLAZES NOTCHED AND PAINTED RED) ON THE ADJOINER SIDE OF THE TRUE LINE. THE POSITION FOR THE WEST 1/16 CORNER BETWEEN SECTIONS 34 AND 3 WAS DETERMINED (BUT NOT SET) AT MIDPOINT BETWEEN THE SOUTHWEST SECTION CORNER AND THE SOUTH 1/4 CORNER. THE POSITION FOR THE CENTER-SOUTH 1/16 CORNER WAS DETERMINED (BUT NOT SET) AT MIDPOINT BETWEEN THE SOUTH 1/4 CORNER AND THE POSITION FOR THE CENTER 1/4 CORNER (SEE NARRATIVE OF C.S. M106-59). THE SOUTH 1/16 CORNER BETWEEN SECTIONS 33 AND 34 WAS SET AT MIDPOINT BETWEEN THE SOUTHWEST SECTION CORNER AND THE WEST 1/4 CORNER OF SECTION 34. THE CENTER-WEST 1/16 CORNER OF SECTION 34 WAS SET AT MIDPOINT BETWEEN THE POSITION FOR THE CENTER 1/4 CORNER AND THE WEST 1/4 CORNER. THE SOUTHWEST 1/16 CORNER WAS SET AT THE POINT OF INTERSECTION OF THE NORTH-SOUTH AND EAST-WEST CENTERLINES OF THE SOUTHWEST 1/4. ALL CORNERS SET IN THIS SURVEY WERE MONUMENTED AS SHOWN ON THIS PLAT. FOR ALL BEARING TREES MARKED IN THIS SURVEY, THE DISTANCE WAS MEASURED FROM THE CORNER TO A "W" NAIL IN THE LOWER BLAZE AND THE BEARINGS ARE MAGNETIC, VARIATION 20'.

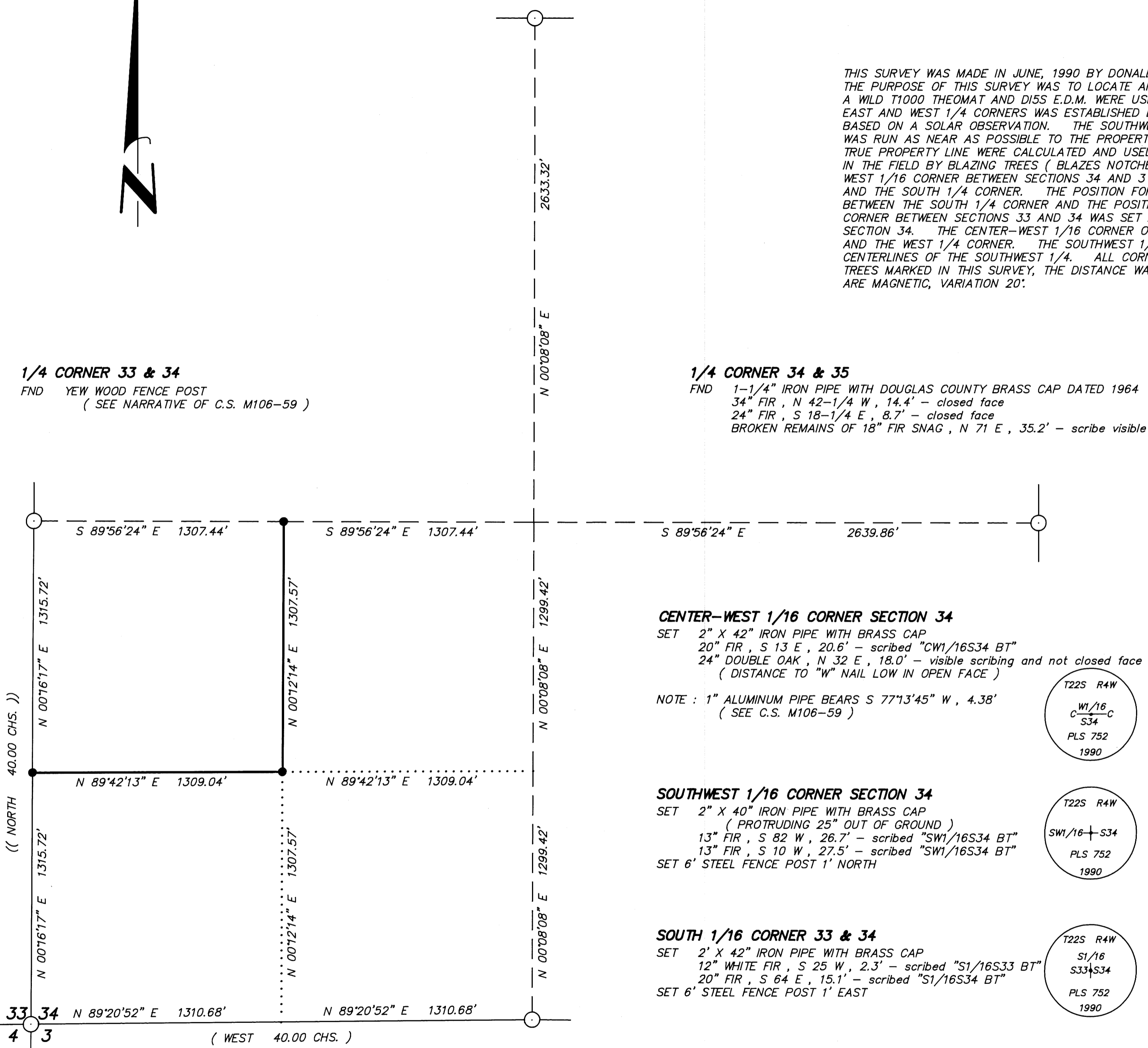
1/4 CORNER 33 & 34
 FND YEW WOOD FENCE POST
 (SEE NARRATIVE OF C.S. M106-59)

1/4 CORNER 34 & 35
 FND 1-1/4" IRON PIPE WITH DOUGLAS COUNTY BRASS CAP DATED 1964
 34" FIR, N 42-1/4 W, 14.4' - closed face
 24" FIR, S 18-1/4 E, 8.7' - closed face
 BROKEN REMAINS OF 18" FIR SNAG, N 71 E, 35.2' - scribe visible

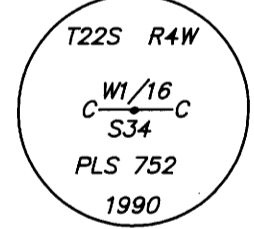
REGISTERED
 PROFESSIONAL
 LAND SURVEYOR

Donald L. Peel

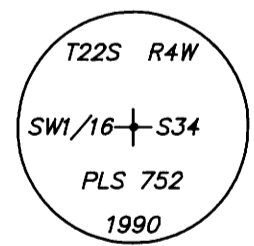
OREGON
 JULY 8, 1988
 DONALD L. PEEL
 752



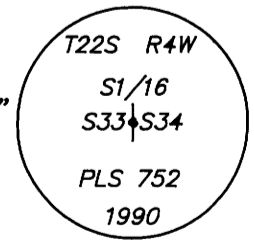
CENTER-WEST 1/16 CORNER SECTION 34
 SET 2" X 42" IRON PIPE WITH BRASS CAP
 20" FIR, S 13 E, 20.6' - scribed "CW1/16S34 BT"
 24" DOUBLE OAK, N 32 E, 18.0' - visible scribing and not closed face
 (DISTANCE TO "W" NAIL LOW IN OPEN FACE)
 NOTE : 1" ALUMINUM PIPE BEARS S 77°13'45" W, 4.38'
 (SEE C.S. M106-59)



SOUTHWEST 1/16 CORNER SECTION 34
 SET 2" X 40" IRON PIPE WITH BRASS CAP
 (PROTRUDING 25" OUT OF GROUND)
 13" FIR, S 82 W, 26.7' - scribed "SW1/16S34 BT"
 13" FIR, S 10 W, 27.5' - scribed "SW1/16S34 BT"
 SET 6' STEEL FENCE POST 1' NORTH



SOUTH 1/16 CORNER 33 & 34
 SET 2" X 42" IRON PIPE WITH BRASS CAP
 12" WHITE FIR, S 25 W, 2.3' - scribed "S1/16S33 BT"
 20" FIR, S 64 E, 15.1' - scribed "S1/16S34 BT"
 SET 6' STEEL FENCE POST 1' EAST



BASIS OF BEARING : SOLAR OBSERVATION (AS PER C.S. M106-59)

SCALE : 1" = 400'

- CORNERS FOUND
- CORNERS SET THIS SURVEY
- PROPERTY LINE BLAZED
- () RECORD DATA G.L.O. 1851
- (()) RECORD DATA G.L.O. 1855

SECTION CORNER 33, 34, 3, 4
 FND 2-1/2" IRON PIPE WITH B.L.M. BRASS CAP DATED 1963
 23" INCENSE CEDAR, S 89-1/4 E, 25.5' - visible scribing
 (RECORD, HAINES PLAT, S 80 E, 28.0')
 27" INCENSE CEDAR, N 14-3/4 W, 30.0' - closed face
 (RECORD, HAINES PLAT, N 16 W, 25.5')

1/4 CORNER 34 & 3
 FND 2" IRON PIPE WITH BRASS CAP DATED 1988
 34" FIR, SOUTH, 72.6' - visible scribing
 13" FIR, N 58 W, 12.7' - visible scribing
 NOTE : HAINES "T" BAR BEARS N 8°28'10" W, 10.80'
 (SEE C.S. M106-59)

SURVEY IN
 SW 1/4 SECTION 34, T22S, R4W, W.M.
 DOUGLAS COUNTY, OREGON

FOR
 WEYERHAEUSER COMPANY
 BY
 PEEL BAKER LAND SURVEYING, INC.
 JUNE 8, 1990

COUNTY SURVEYORS FILE DATA
 DO NOT REMOVE FROM OFFICE

MAP FILE 17/14-38