

SURVEYED BY:

REGISTERED PROFESSIONAL LAND SURVEYOR

Lloyd D. Smith

OREGON JULY 22, 1977 LLOYD D. SMITH 1101

LLOYD D. SMITH 300 5TH ST. BAY PARK COOS BAY, OREGON

FILED

JUL 11 1990

COUNTY SURVEYOR DOUGLAS COUNTY, ORE

SURVEY NARRATIVE TO COMPLY WITH PARAGRAPH 209.250 OREGON REVISED STATUTES

SURVEY FOR: OREGON DEPARTMENT OF FORESTRY

SECTION 2, T.33S., R.6 W., W.M.

DOUGLAS COUNTY, OREGON THEODOLITE AND EDM SURVEY BY: LLOYD D. SMITH TIM VAN VLEET AND DAVID TAYLOR DRAWN BY: LLOYD D. SMITH JUNE 20, 1990

LEGEND

- OSDF P/C = OREGON STATE DEPARTMENT OF FORESTRY 1 1/2" X 36" ALUMINUM PIPE WITH 3 3/4" ALUMINUM CAP WITH MAGNETIC INSERT
O = MONUMENT SET
O with center dot = MONUMENT FOUND
O with horizontal line = POWER LINE POLE
O with vertical line = ANTENNA
[] = BUILDING
WPCP = WHITE PAINTED CEDAR POST
BTT = BEARING TREE TAG
- - - - = ACCESS ROAD
() = RECORD INFORMATION
ESTABLISHED = NEW CORNER SET

PURPOSE

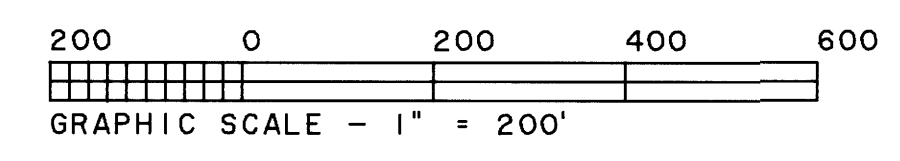
TO ESTABLISH THE SOUTHWEST CORNER OF THE NORTHWEST QUARTER (NW1/4) OF THE SOUTHWEST QUARTER (SW1/4) OF SECTION 2, TOWNSHIP 33 SOUTH, RANGE 6 WEST, OF THE WILLAMETTE MERIDIAN, AND MONUMENT 1.76 ACRES LEASED BY FREEDOM COMMUNICATIONS ON STATE FOREST LANDS.

PROCEDURE

A RANDOM TRAVERSE WAS RAN BETWEEN THE SECTION CORNER AND THE QUARTER CORNER ON THE SOUTHWEST SIDE OF SECTION 2. THE SOUTH ONE SIXTEENTH CORNER WAS ESTABLISHED BY PROPORTIONATE MEASUREMENT AS OUTLINED IN THE "MANUAL OF INSTRUCTIONS FOR THE SURVEY OF THE PUBLIC LANDS OF THE U.S." BUILDINGS, ANTENNAS, POWER POLES AND GUY WIRES WERE TIED TO WITH A RANDOM TRAVERSE. ANGLE POINT WERE CALCULATED TO INCLUDE ALL EQUIPMENT LOCATED IN THE LEASE SITE AND A 5/8" IRON ROD WITH A PLASTIC CAP MARKED LS 1101 WAS SET AT EACH OF THE CALCULATED ANGLE POINTS. BEARINGS TO ACCESSORIES OF THE ESTABLISHED CORNER WERE TAKEN WITH A STAFF COMPASS SET AT 19° EAST DECLINATION. DISTANCE MEASURED TO BEARING TREE FACE. SEE COUNTY RECORDS FOR DETAILED REPORT ON FOUND CORNERS.

BASIS OF BEARING

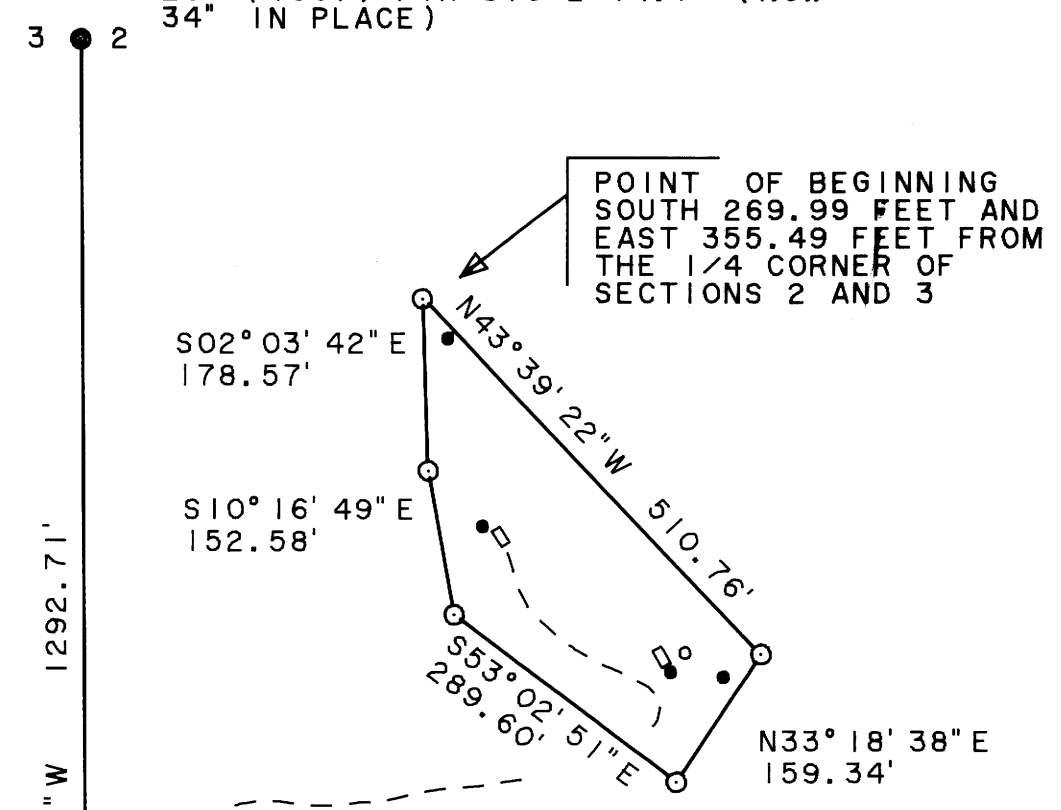
BASED ON 1988 JOHN E. HOLLINGSWORTH SURVEY OF THE SOUTH HALF OF LINE BETWEEN SECTIONS 2 AND 3, TOWNSHIP 33 SOUTH, RANGE 6 WEST, WILLAMETTE MERIDIAN.



B - 315

COUNTY SURVEYORS FILE DATA DO NOT REMOVE FROM OFFICE

1/4 CORNER FOUND UNRECORDED 1/2" IRON ROD, REWITNESSED 1967, DOUGLAS COUNTY 5" (ORIG) FIR S64°E 54 LKS (NOW 16" IN PLACE) 16" (ORIG) FIR N46°W 28 LKS (NOW 39" IN PLACE) 26" (1967) FIR S10°E 14.7' (NOW 34" IN PLACE)



(LAKE & HYDE S00°31'W 40.00 CHAINS) (JOHN E. HOLLINGSWORTH, 1988, N00°21'21"W 2585.66)

S 1/16 CORNER ESTABLISHED SET OSDF P/C 34" IN GROUND 40" FIR S68°E 17.9' SCRIBED (S 1/16 S2 BT) BTT 8" FIR S67°W 16.9' SCRIBED (S 1/16 S3 BT) BTT WPCP N58°E 2.3'

LEASE SITE DESCRIPTION

A LEASE SITE LYING IN THE NORTHWEST QUARTER (NW1/4) OF THE SOUTHWEST QUARTER (SW1/4) OF SECTION 2, TOWNSHIP 33 SOUTH, RANGE 6 WEST, WILLAMETTE MERIDIAN, SAID LEASE SITE BEING THAT PORTION OF SAID PROPERTY DESCRIBED AS FOLLOWS:

BEGINNING AT AN IRON ROD, SAID IRON ROD BEING SOUTH 269.99 FEET AND EAST 355.49 FEET FROM THE ONE QUARTER CORNER OF SECTIONS 2 AND 3; THENCE SOUTH 02°03'42" EAST 178.57 FEET TO AN IRON ROD; THENCE SOUTH 10°16'49" EAST 152.58 FEET TO AN IRON ROD; THENCE SOUTH 53°02'51" EAST 289.60 FEET TO AN IRON ROD; THENCE NORTH 33°18'38" EAST 159.34 FEET TO AN IRON ROD; THENCE NORTH 43°39'22" WEST 510.76 FEET TO THE POINT OF BEGINNING. SAID LEASE SITE CONTAINS 1.76 ACRES.

SECTION CORNER FOUND DOUGLAS COUNTY, 1967, PIPE & CAP 3" (ORIG) BLACK OAK N40°E 11 LKS (NOW 11" FACE EXPOSED & ROTTED OUT, IN PLACE) 4" (ORIG) BLACK OAK S35°E 65 LKS (NOW 12" S32°E, FACE ROTTED OUT) 6" (ORIG) BLACK OAK N75°W 100 LKS (NOW 17" N70°W 68.0', FACE ROTTED OUT) 13" (1967) PINE N63°E 13.1' (NOW 17" N58°E FACE CLOSED) 12" (1967) BLACK OAK S23°E 9.5' (NOW 12" FACE CLOSED, IN PLACE) 4" (1967) FIR S42°W 8.9' (NOW 8" FACE CLOSED, IN PLACE) 9" (1967) OAK N81°W 23.7' (NOW FACE CLOSED, IN PLACE)

MAP FILE M110 - 30

MAP FILE M110 - 30