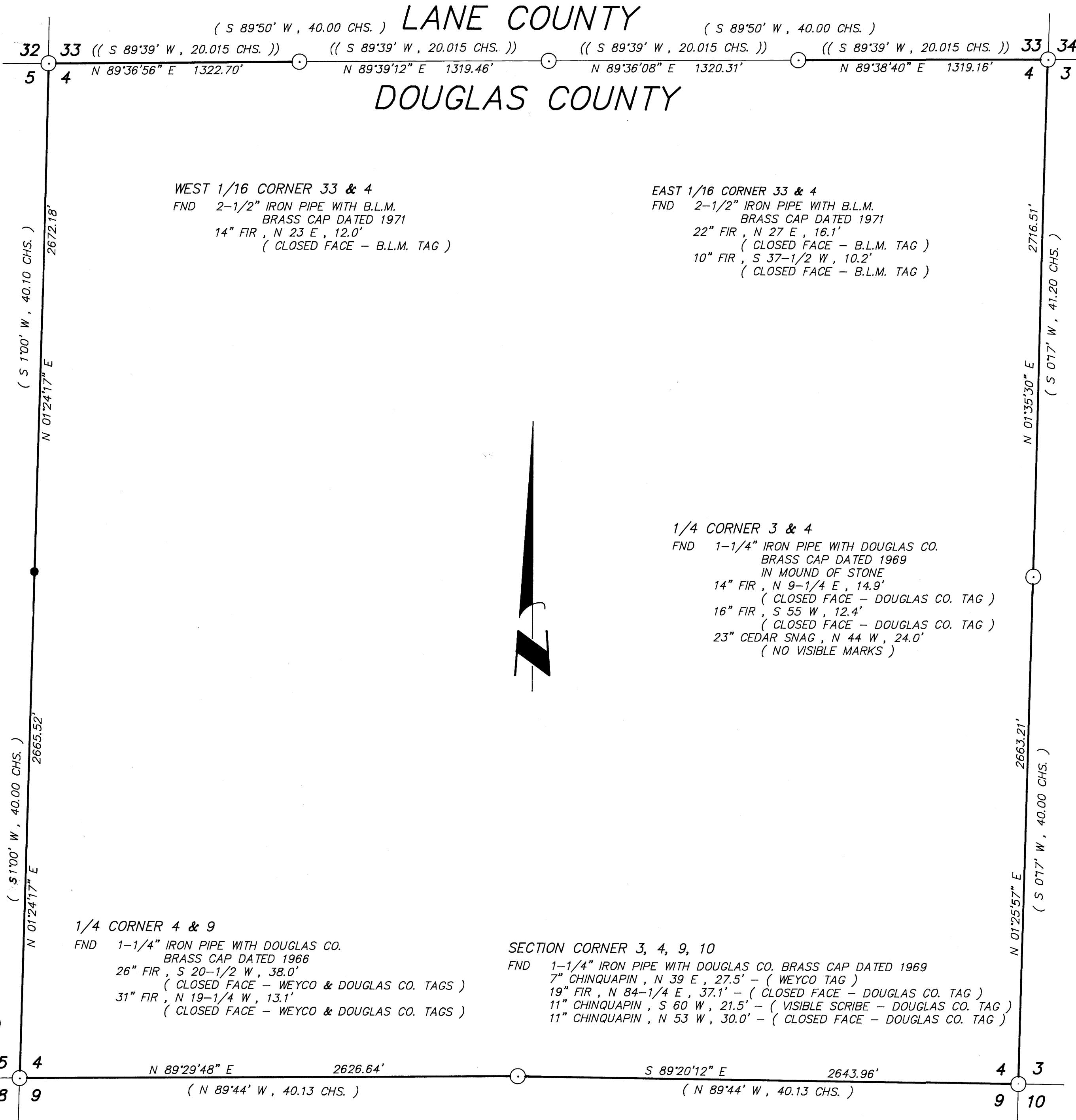


SECTION CORNER 32, 33, 4, 5  
 FND 1-1/4" IRON PIPE WITH DOUGLAS CO. BRASS CAP DATED 1969  
 12" CHINQUAPIN, N 24-1/2 E, 22.1' (WEYCO & DOUGLAS CO. TAGS)  
 20" FIR, S 78-1/2 E, 47.9' (CLOSED FACE - WEYCO TAG)  
 16" FIR, S 58-1/4 W, 47.4' (CLOSED FACE - WEYCO TAG)  
 18" FIR, N 52 W, 29.0' (CLOSED FACE - WEYCO TAG)

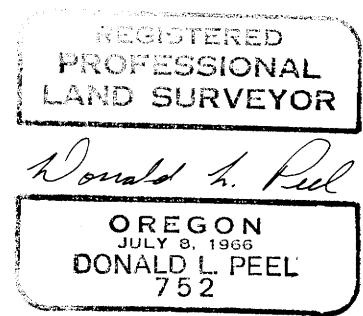
1/4 CORNER 33 & 4  
 FND 2-1/2" IRON PIPE WITH B.L.M. BRASS CAP DATED 1971  
 15" FIR, S 8-1/4 W, 17.9' (CLOSED FACE - B.L.M. TAG)

SECTION CORNER 33, 34, 3, 4  
 FND 2-1/2" IRON PIPE WITH B.L.M. BRASS CAP DATED 1971  
 15" FIR, N 49-1/4 E, 38.9' (CLOSED FACE - B.L.M. TAG)  
 19" FIR, N 69 E, 52.3' (WEYCO TAG)  
 29" FIR, S 48-1/2 E, 20.4' (WEYCO TAG)  
 21" FIR, S 19 W, 94.1' (CLOSED FACE - B.L.M. TAG)  
 25" FIR, N 70-1/2 W, 71.1' (WEYCO TAG)  
 18" FIR, N 39-1/4 W, 43.1' (CLOSED FACE - B.L.M. TAG)



**- NARRATIVE -**

THIS SURVEY WAS MADE IN JANUARY THROUGH APRIL, 1990 BY DONALD L. PEEL OF PEEL BAKER LAND SURVEYING, INC., 1385 OAK STREET -#3, EUGENE OREGON. THE PURPOSE OF THIS SURVEY WAS TO LOCATE AND MARK THE PROPERTY LINES OF THE LAND OWNED BY WEYERHAEUSER COMPANY IN SECTION 4, T21S, R4W, W.M.. A WILD T1000 THEOMAT AND DISS E.D.M. WERE USED TO PERFORM THIS SURVEY. A CLOSED RANDOM TRAVERSE WAS RUN AROUND THE ENTIRE SECTION FOR CONTROL. BEARINGS WERE BASED ON A SOLAR OBSERVATION. OFFSETS FROM THE RANDOM TRAVERSE LINE TO THE TRUE PROPERTY LINE WERE CALCULATED AND USED TO DETERMINE THE POSITION OF THE TRUE LINE. THE TRUE PROPERTY LINE WAS MARKED IN THE FIELD BY BLAZING TREES (BLAZES NOTCHED AND PAINTED RED) ON BOTH SIDES OF THE TRUE LINE. ALL FOUR SECTION CORNERS, THE NORTH, SOUTH AND EAST 1/4 CORNERS, THE EAST 1/16 CORNER BETWEEN SECTIONS 33 & 4, AND THE WEST 1/16 CORNER BETWEEN SECTIONS 33 & 4 WERE ALL FOUND AND USED FOR CONTROL. THE WEST 1/4 CORNER WAS SEARCHED FOR BUT NOT FOUND. I REESTABLISHED SAID WEST 1/4 CORNER BY SINGLE PROPORTION AND MONUMENTED IT AS SHOWN ON THIS PLAT. FOR THE BEARING TREES MARKED IN THIS SURVEY, THE DISTANCE WAS MEASURED FROM THE CORNER TO A "W" NAIL IN THE LOWER BLAZE.



BASIS OF BEARING : SOLAR OBSERVATION  
 SCALE : 1" = 400'

- CORNERS FOUND
- CORNERS SET THIS SURVEY
- PROPERTY LINE BLAZED
- ( ) RECORD DATA G.L.O. 1856
- (( )) RECORD DATA B.L.M. 1971

**COUNTY SURVEYORS FILE DATA**  
**DO NOT REMOVE FROM OFFICE**

**SURVEY IN**  
**SECTION 4, T21S, R4W, W.M.**  
**LANE AND DOUGLAS COUNTIES, OREGON**  
 FOR  
**WEYERHAEUSER COMPANY**  
 BY  
**PEEL BAKER LAND SURVEYING, INC.**  
 APRIL 9, 1990

M110-2