

FILED

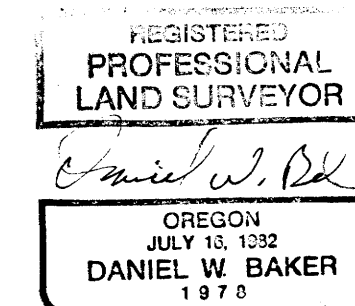
MAY 31 1990

COUNTY SURVEYOR  
DOUGLAS COUNTY, ORE.

MAP FILE M112-15

NARRATIVE

THIS SURVEY WAS MADE IN OCTOBER, 1989 BY DANIEL W. BAKERT OF PEEL BAKER LAND SURVEYING, INC., 1385 OAK STREET-SUITE 3, EUGENE, OREGON 97401. THE PURPOSE OF THIS SURVEY WAS TO CORRECT M 107-1 ( DOUGLAS COUNTY ) OR C.S. 28557 ( LANE COUNTY ), THE SOUTH 1/4 CORNER AND EAST 1/16 CORNER WERE SET IN ERROR IN MY PREVIOUS SURVEY AND THEY WERE SET IN THE CORRECT POSITION IN THIS SURVEY. THE TWO NEW CORNERS WERE SET FROM TRAVERSE POINTS FROM MY PREVIOUS SURVEY. THE SOUTH 1/4 CORNER WAS SET AT MIDPOINT BETWEEN THE SOUTH WEST SECTION CORNER POSITION AND THE STANDARD SECTION CORNER OF SECTIONS 12 AND 13, T19S, R10W, W.M. THE EAST 1/16 CORNER WAS SET AT MIDPOINT BETWEEN THE SOUTH 1/4 CORNER AND THE STANDARD SECTION CORNER OF SECTIONS 12 AND 13. THE OLD BEARING TREES WERE USED AS REFERENCES TO THE NEW CORNERS. THE BASIS OF BEARING FOR THIS SURVEY WAS THE SAME AS MY PREVIOUS SURVEY. DISTANCES TO BEARING TREES ARE TO CENTER OF TREE AND BEARINGS ARE MAGNETIC - VARIATION 20'. ALL MONUMENTS ARE MARKED ACCORDING TO THE " BLM MANUAL OF INSTRUCTIONS - 1973 " AND ALSO STAMPED " PLS 1978 ".



1/4 CORNER 12 & 13

SET : 2 1/2" X 31" U.S.F.S. ALUMINUM MONUMENT

11" HEMLOCK, S 86°E, 14.9'  
9" HEMLOCK, S 32°E, 35.9'

NOTE : 5/8" REBAR SET TO MARK CORNER POSITION IN C.S.28557  
BEARS S 53°06'52" E, 6.18'

CORNER POINT FROM LANE COUNTY RE-ESTAB. 2187 BEARS  
N 50°24'13" E, 12.21' ( POSITION ESTABLISHED FROM BEARING TREES )

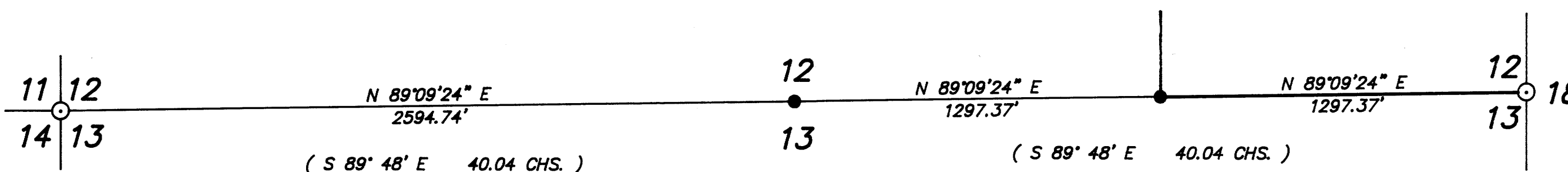
STANDARD SECTION CORNER 12 & 13 T19S R10W WM

FOUND : U.S. BLM BRASS CAP " 1958 "

32" FIR, S 66 1/2° E, 45.0'  
24" FIR, N 25° W, 30.1'

BASIS OF BEARING : SOLAR OBSERVATION as per C.S. 22751 ( LANE COUNTY )

SCALE : 1" = 400'



- CORNERS FOUND AND USED FOR CONTROL
- CORNERS SET IN THIS SURVEY
- POSTED AND BLAZED PROPERTY LINE
- ( ) RECORD DATA - 1899 GLO SURVEY

SECTION CORNER 11, 12, 13, 14

FOUND : DOUGLAS COUNTY BRASS CAP  
24" FIR STUMP, N35 1/2°E, 61.5'  
38" FIR STUMP, S 36 1/2°E, 56.1'  
30" FIR STUMP, S 6 1/2°W, 39.0'

NOTE : TRUE CORNER POINT BEARS S 4°38'E, 1.30'  
AT THIS POINT FOUND A 1989 BLM BRASS CAP  
AND 3 NEW BEARING TREES

10" FIR, S 5 3/4°E, 27 1/2 LINKS  
12" FIR, S 70 1/4°W, 25 LINKS  
10" FIR, N 30°W, 20 LINKS

EAST 1/16 CORNER 12 & 13

SET : U.S.F.S. ALUMINUM CAP IN ROCK

14" HEMLOCK, S 26° E, 50.7'  
24" FIR, N 72 1/2° W, 43.7'

NOTE : BRASS CAP as per LANE RE-ESTAB 2187  
BEARS N 83°17'01" E, 5.82'

CORNER POINT SET IN C.S. 28557 BEARS  
S 53° 06'52" E, 3.09'

SURVEY OF  
SOUTH LINE, SECTION 12, T19S, R10W, W.M.  
DOUGLAS COUNTY, OREGON

FOR  
MARGARET CROWELL  
BY  
PEEL BAKER LAND SURVEYING, INC.

MAY 4, 1990

COUNTY SURVEYORS FILE DATA  
DO NOT REMOVE FROM OFFICE

MAP FILE M112-15