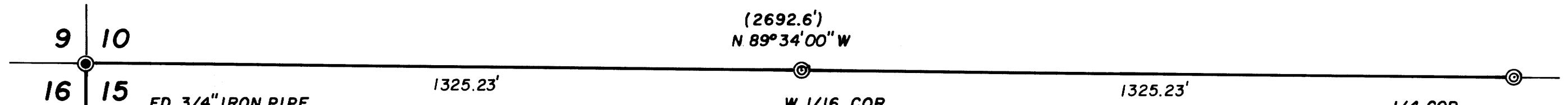


C S File 63 / 115 W
Map File M112 - 12



(2692.6')
N 89°34'00" W

1325.23'

1325.23'

9 10
16 15

FD. 3/4" IRON PIPE
& B.T.'s
C.S. FILE NO. 53/52

W. 1/16 COR.
SCRIBED:
20" MADRONE N 34° E 57.36'
6" CEDAR S 42° E 50.28'

1/4 COR.
FD. B.T. STUMPS
SCRIBED:
28" S. PINE N 50° W 19.3'
12" CEDAR S 25° E 8.5'
C.S. FILE NO. 47/98

S 0°03'21" W
2658.81'



MAP

FILED
MAY 10 1990
COUNTY SURVEYOR
DOUGLAS COUNTY, ORE.

SHOWING A SURVEY IN THE N.W. 1/4
OF SECTION 15, T.32S., R.5W., W.M.,
DOUGLAS COUNTY, OREGON

APRIL 27, 1990 SCALE: 1" = 200'

LEGEND

- FOUND MONUMENTS AS NOTED
 - SET 5/8" X 30" IRON RODS WITH YELLOW PLASTIC CAP MARKED "HULL RS 901"
- BASIS OF BEARING NORTH LINE OF N.W. 1/4 M5-27
- () RECORD M5-27
SEE SEPARATE NARRATIVE

SURVEYED FOR:

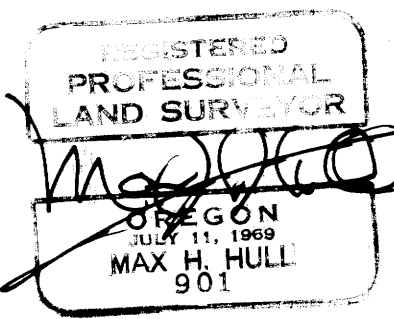
GREGORY FOREST PRODUCTS
P.O. BOX "C"
GLENDALE, OREGON 97442

SURVEYED BY:

MAX H. HULL SURVEYING
231 N.W. "B" STREET
GRANTS PASS, OR 97526

**COUNTY SURVEYORS FILE DATA
DO NOT REMOVE FROM OFFICE**

1/4 COR.
FD. 5/8" BOLT
& B.T.'s
C.S. FILE NO. 53/52



C S File 63 / 115 W
Map File M112 - 12



M110-12

MAX H. HULL Land Surveying

Office 476-2425

231 N. W. 'B' Street Grants Pass, Oregon 97526

PAGE 1 of 2

SURVEY NARRATIVE to comply with Paragraph 209.250, O.R.S.

DATE: April 27, 1990

FOR: GREGORY FOREST PRODUCTS
P.O. Box "C"
Glendale, OR 97442

PURPOSE: To Set the West 1/16 Corner and Survey the West line of the Northwest 1/4 of Section 15, Township 32 South, Range 5 West, Willamette Meridian, Douglas County, Oregon.

PROCEDURE: Beginning at the North 1/4 Corner at which point I Set a 5/8" Iron Rod from the Bearing Tree Stumps

#230⁺ A B. Oak 18" in diam. South 32° West 11.3 feet, blaze healed
A B. Oak 20" in diam. North 57°40' East 70.2 feet, blaze healed C

Thence I Traversed to the Northwest Section Corner at which point I found a 3/4" iron pipe from which I found

A B. Oak 52" in diam. South 52° East 171.6 feet, face opened
A W. Oak 9" in diam. South 22° West 42.1 feet, blaze healed
A W. Oak 16" in diam. North 69° East 47.0 feet, blaze healed
A W. Oak 16" in diam. South 68° East 40.0 feet, blaze healed
A Cedar 7" in diam. North 54° West 9.7 feet, blaze healed

Thence I traversed to the to the West 1/4 Corner at which point I found a 5/8" iron bolt from which I found

FILED

MAY 10 1990

COUNTY SURVEYOR
DOUGLAS COUNTY, ORE.

U.S. File No. 63/115-1



M110-12

MAX H. HULL Land Surveying

Office 476-2425

231 N. W. 'B' Street Grants Pass, Oregon 97526

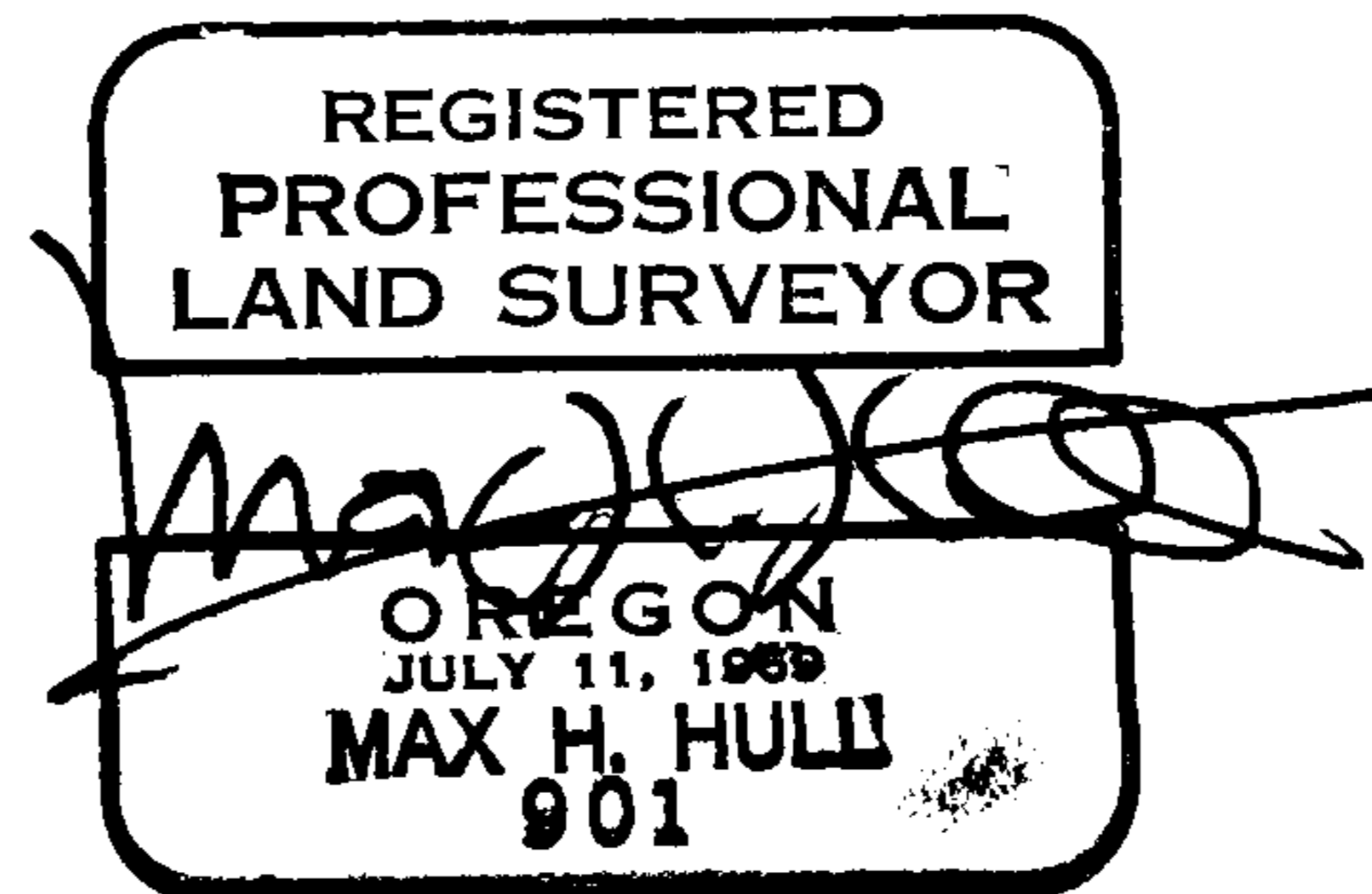
PAGE 2 of 2

An axle South 75° West 0.35 feet
A B. Oak 22" in diam. North $19\ 1/2^{\circ}$ West 96.7 feet, blaze
healed
A Madrone Stump 8" in diam. South $64\ 1/2^{\circ}$ East 26.2 feet,
blaze healed
A Fir 16" in diam. North $13\ 1/2^{\circ}$ East 10.1 feet, blaze
healed

Basis of Bearing is North line of Northwest $1/4$ per M5-27.

The Survey was conducted with a Nikon NTD 4 Total Station.

The Survey Map is a separate document.



FILED

MAY 10 1990

COUNTY SURVEYOR
DOUGLAS COUNTY, ORE.

C.S. File No. *63/115-1*