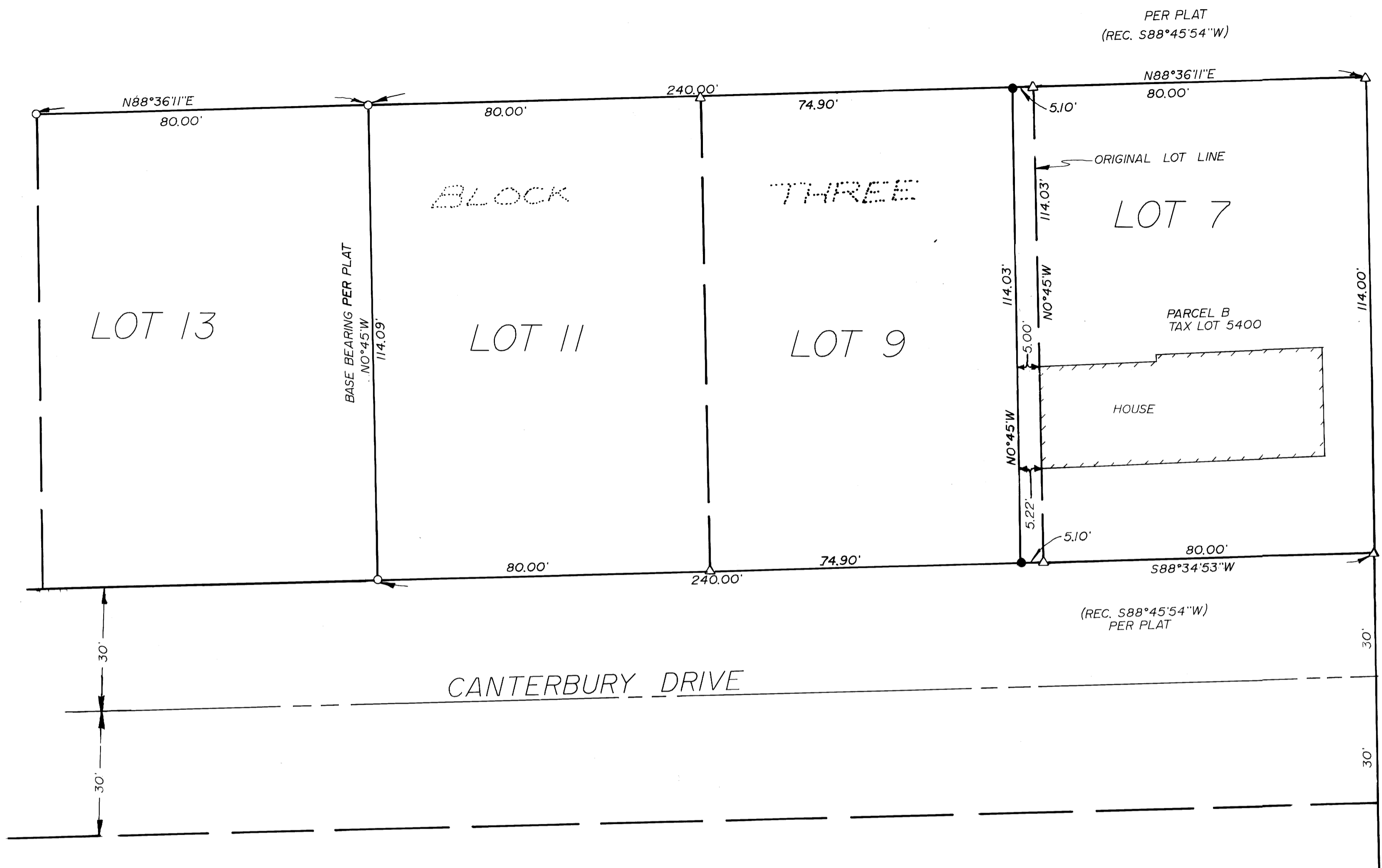


MAP FILE M110-10

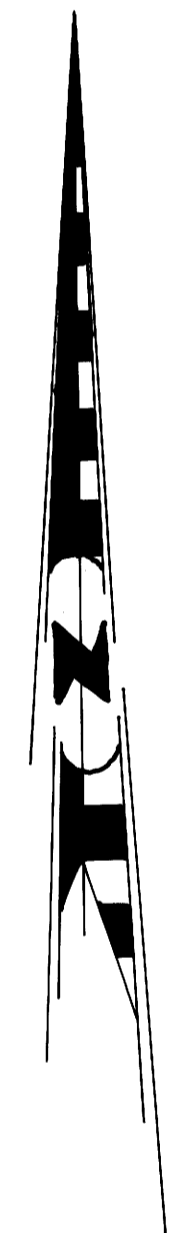


FILED
 2/8
 MAY 9 1990
 COUNTY SURVEYOR
 DOUGLAS COUNTY, ORE

- LEGEND
- FD. 5/8" I.R.
 - SET 5/8" x 30" IR WITH CAP MARKED "BENTZ SUR. INC."
 - △ COMPUTED POINT

NARRATIVE

SURVEY TO CREATE A LOT LINE ADJUSTMENT AS SHOWN. SEE "CANTERBURY ESTATES" PHASE #2 (VOL. 15, PG. 70).
 FIELD CREW: A. TIETZEL & B. OFFERLEY
 EQUIPMENT: WILD T-16 MOUNTED WITH LIETZ RED-1 E.D.M.
 OFFICE: ROMEY WARE
 DRAFTING: MIKE RADCLIFFE JR.



SCALE 1"=20'
 APR1990

**LOT LINE ADJUSTMENT
 SURVEY IN LOT 9, BLOCK 3
 CANTERBURY ESTATES-PHASE 2**

LYING IN THE SE 1/4 OF SEC. 10 AND THE NE 1/4 OF
 SEC. 15 T27S, R6W, W.M.

SURVEYED FOR: BILL KRAMER
 869 SE CHADWICK
 ROSEBURG, OR. 97470
 (503) 672-8539

SURVEYED BY: DONALD A. BENTZ INC.
 1205 SE COURT
 ROSEBURG, OR. 97470
 (503) 673-0166

John K. Stuteem
 COMMUNITY DEVELOPMENT DIRECTOR
 N/A
 D.C. SURVEYOR

5/3/90
 DATE

INITIAL POINT FD. 2" IRON PIPE
 OF "CANTERBURY ESTATES"
 PHASE #2

REGISTERED
 OREGON
 LAND SURVEYOR
 DONALD A. BENTZ
 839

COUNTY SURVEYORS FILE DATA
 DO NOT REMOVE FROM OFFICE

MAP FILE M110-10