

LE M109-80
COUNTY SURVEYORS FILE DATA
DO NOT REMOVE FROM OFFICE

LOT LINE ADJUSTMENT FOR CLIFF IRONS

FILED *JK*

APR 19 1990 TF

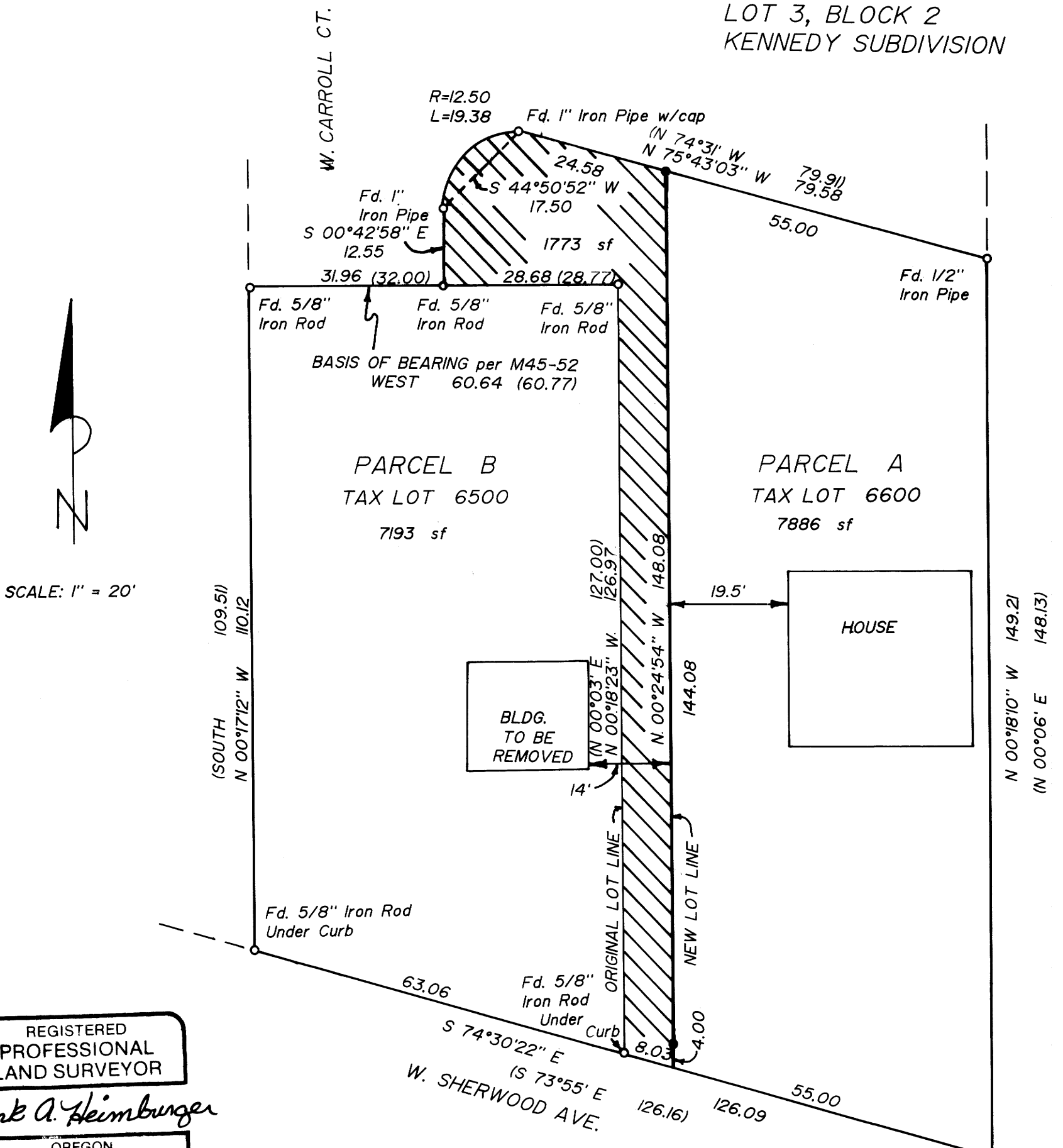
COUNTY SURVEYOR
DOUGLAS COUNTY, ORE TF

IN LOT 9, BLOCK 1, SHINN'S ADDITION

IN THE SW 1/4 OF SECTION 14, T27S, R6W, WM

APRIL, 1990

LOT 3, BLOCK 2
KENNEDY SUBDIVISION



SCALE: 1" = 20'

REGISTERED
PROFESSIONAL
LAND SURVEYOR

Mark A. Heimbarger

OREGON
JULY 16, 1987
MARK A. HEIMBURGER
2287

MAP PREPARED BY:
AA SURVEYING, INC.
2566 NE STEPHENS
ROSEBURG, OR 97470

- SET 5/8"x30" IRON ROD w/PLASTIC CAP MARKED: "AA SURVEYING"
- FOUND MONUMENT AS NOTED
- () RECORD INFORMATION per M45-52

Fd. Brass Plug
in Curb
S.E. Corner
Lot 9, Block 1
Shinn's Addition

John R. Stuteam
COMMUNITY DEVELOPEMENT DIRECTOR

4-17-90
DATE