

SOUTHEAST QUARTER SECTION 11

SURVEY FOR

U.S. NATIONAL BANK OF OREGON

EAST 1/2, SEC. 11, T. 22 S., R. 6 W., W.M.

DOUGLAS COUNTY, OREGON

MARCH 28, 1990

- LEGEND**
- ⊙ FOUND GOVERNMENT CORNER AS DESCRIBED
 - ⊙ REESTABLISHED OR SET GOVERNMENT CORNER AS DESCRIBED
 - FOUND MONUMENT AS DESCRIBED
 - SET MONUMENT AS DESCRIBED
 - EXISTING FENCE LINE

- REFERENCES**
1. Umpqua State Highway No. 38, Drawing No. 1B-20-16
 2. C.S. File Numbers M18-32, M20-37, M23-44, 42/75, and M89-21 by Wilford Haines
 3. C.S. File Number M10-38 by Arthur Evans
 4. C.S. File Number M69-63 by William Ruppert

FILED
APR 9 1990
COUNTY SURVEYOR
DOUGLAS COUNTY, ORE.

NARRATIVE

The purpose of this survey was to establish the following boundaries as requested by our client:

- 1) The common boundary between Tax Lots 1100 and 1199.
- 2) The common boundary between Tax Lots 1000 and 1100.
- 3) The northerly boundary of Tax Lot 1000.
- 4) The westerly boundary of Tax Lot 100.

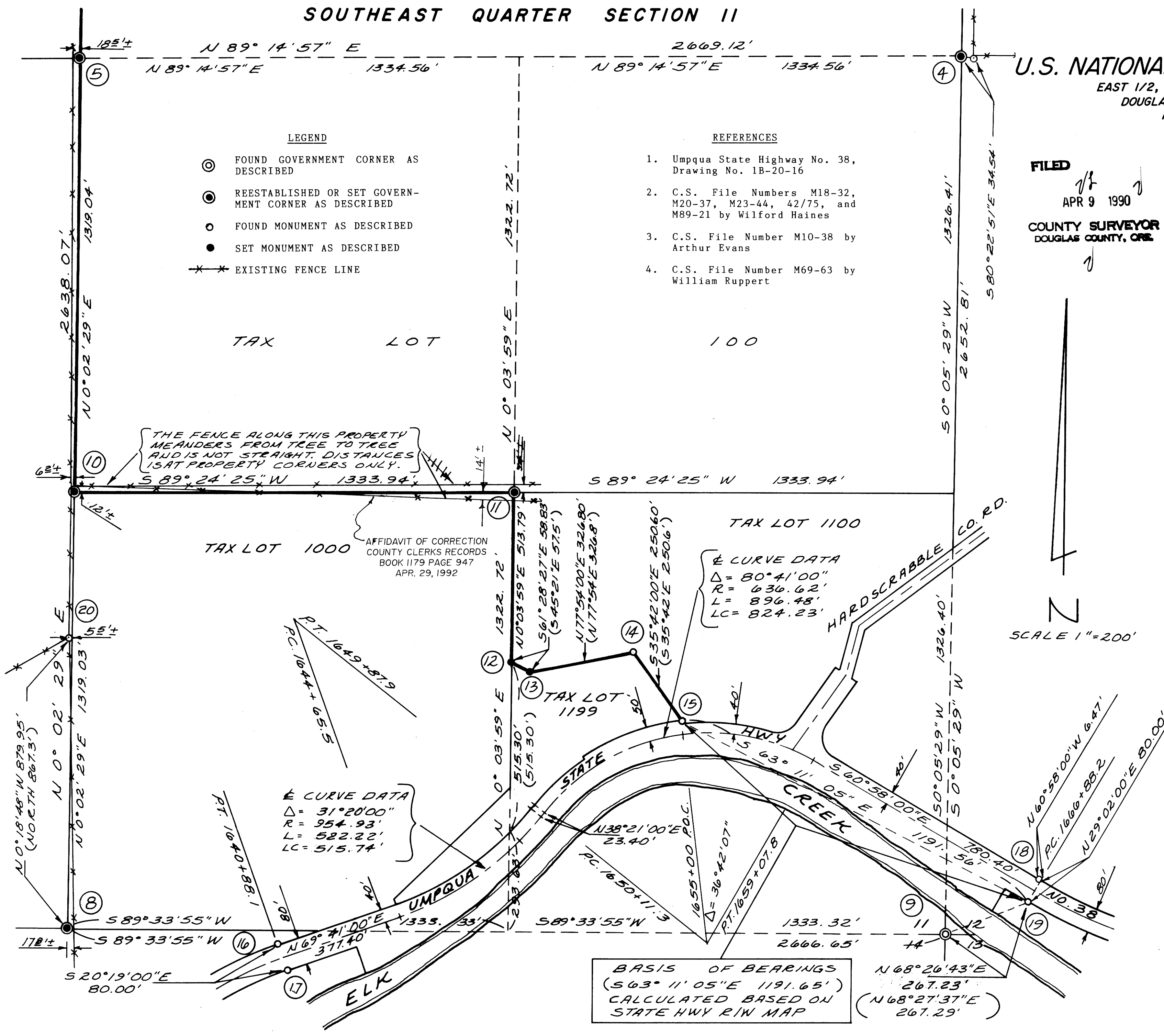
In order to perform the survey, it was necessary to subdivide Section 11. We subdivided the Section from monuments found and by reestablishing missing corners by proportionate measurement, as shown and described hereon.

The basis of bearings was established by holding the monuments found at stations 1655+00, left 40.00 feet and P.C. 1666+88.2, right 40.00 feet along the right of way of the Umpqua State Highway No. 38. We rotated our survey based on the calculated bearing of S63°11'05"E between these two monuments.

The location of the highway was established from found monuments along the northerly and southerly right of way. We held to the right of way as shown on Drawing No. 1B-20-16, on file at the Douglas County Surveyor's Office.

All monuments were found or set as described in the Corner Date Information number relating to each corner.

SCALE 1"=200'



REGISTERED
PROFESSIONAL
LAND SURVEYOR

James A. Branch
OREGON
SEPT. 23, 1977
JAMES A. BRANCH
1138

BRANCH ENGINEERING
212 O Street
SPRINGFIELD, OREGON 97477
(503) 746-0637

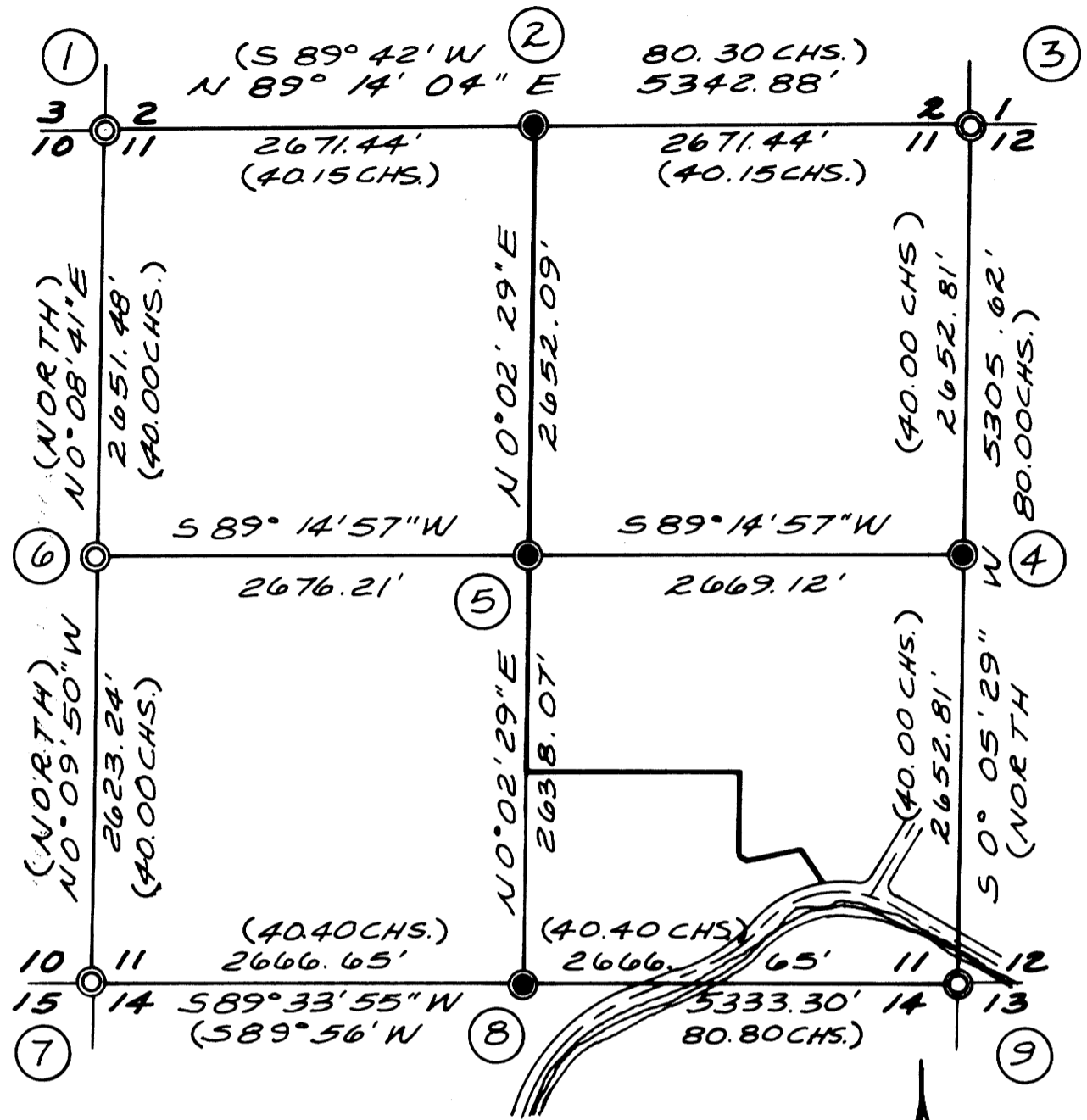
MAP FILE M1129-747

C.S. File No. 63/124
MAP FILE M1129-747

SUBDIVISION OF SECTION 11, T.22S., R.6W., W.M.

SURVEY FOR
U.S. NATIONAL BANK OF OREGON
EAST 1/2, SEC. 11, T.22S., R.6W., W.M.
DOUGLAS COUNTY, OREGON
MARCH 28, 1990

FILED
APR 9 1990
COUNTY SURVEYOR
DOUGLAS COUNTY, ORE.



CORNER DATA INFORMATION

- 1 Northwest Corner Section 11
Found 'T' iron set by Wilford Haines in C.S. File No. 42/75. Brass cap on top of 'T' iron is missing. Found 30" (16" - 1955) Ash bearing tree bearing S05°08'E 26.8 feet lying on the ground.
Blazed and scribed new bearing trees as follows:
1) 8" Ash scribed "SE S 3" "BT" bears N8°44'W 175.6 feet.
2) 13" White Oak scribed "SW S 2" "BT" bears N58°09'E 132.5 feet.
3) 27" White Oak scribed "NW S 11" "BT" bears S66°09'E 100.4 feet.
4) 26" Ash scribed "NE S 10" "BT" bears S29°53'W 79.9 feet.
- 2 North 1/4 Corner Section 11
No evidence of original corner was found. Corner was reestablished by proportionate measurement, on line at the mid-point between the Northwest Section Corner and the Northeast Section Corner of Section 11. Set 5/8 inch by 30 inch rebar with yellow plastic cap marked "Branch Eng LS 1138".
Blazed and scribed bearing trees as follows:
1) 25" White Oak scribed "N 1/4 S 11" "BT" bears S84°53'W 53.5 feet.
2) 25" White Oak scribed "S 1/4 S 2" "BT" bears N20°56'W 145.4 feet.
3) 11" White Oak scribed "N 1/4 S 11" "BT" bears S8°11'E 48.8 feet.
4) 16" Douglas Fir scribed "N 1/4 S 11" "BT" bears S65°10'E 76.7 feet.
Fence corner at intersection of north-south fenceline with east-west fenceline bears S13°29'E 23.8 feet from corner.
- 3 Northeast Corner Section 11
Found Douglas County Surveyor's Office brass cap marked: "Douglas Co. Surveyor, T22S R6W, S2/S1, S11/S12, 1983". Brass cap was found in good condition.

- 4 East 1/4 Corner Section 11
No conclusive evidence of original corner was found. Corner was reestablished by proportionate measurement, on line at the mid-point between the Northeast Section Corner and the Southeast Section Corner of Section 11. Set 5/8 inch by 30 inch rebar with yellow plastic cap marked "Branch Eng LS 1138".
A 3/4 inch bolt of unknown origin was found S80°22'51"E 34.54 feet from the reestablished corner. From the 3/4 bolt a corner fence post of a fence running north and east bears N28°53'E 1.2 feet. The reestablished corner bears N82°14'W 35.0 feet from the fence corner. The rotted remains of approximately a 20 inch diameter Fir stump bears N22°52'W 32.2 feet from the fence corner. The original field notes call for a 10" B. Oak to bear N23°W 47 links (31.0 feet) from the corner. The bearing and distance to the stump match relatively close, but the stump is definitely a Fir and not an Oak. No scribe marks of any kind were found and the stump did not appear to be of sufficient size to have been an original bearing tree. None of the evidence found was determined to be conclusive evidence of the original corner; therefore the corner was reestablished by proportionate measurement.
Blazed and scribed bearing trees as follows:
1) 12" Hemlock scribed "E 1/4 S 11" "BT" bears N54°W 11.6 feet.
2) 10" Hemlock scribed "W 1/4 S 12" "BT" bears N62°E 19.1 feet.
3) 8" Hemlock scribed "W 1/4 S 12" "BT" bears S79°E 23.5 feet.
4) 8" Hemlock scribed "E 1/4 S 11" "BT" bears S42°W 21.7 feet.
- 5 Center 1/4 Corner Section 11
Set 5/8 inch by 30 inch rebar with yellow plastic cap marked "Branch Eng LS 1138". Corner was set at the straight line intersection point between the North and South Quarter Section Corners and the East and West Quarter Section Corners. Existing north-south fence is West 18.5 feet more or less from the corner.
Blazed and scribed bearing trees as follows:
1) 15" Douglas Fir scribed "C 1/4 S 11" "BT" bears N12°30'W 44.9 feet.
2) 5" Douglas Fir scribed "C 1/4 S 11" "BT" bears N66°30'E 64.4 feet.
3) 20" Douglas Fir scribed "C 1/4 S 11" "BT" bears S19°15'E 29.7 feet.
4) 17" Douglas Fir scribed "C 1/4 S 11" "BT" bears S51°30'W 17.8 feet.
- 6 West 1/4 Corner Section 11
Found Douglas County Surveyor's Office brass cap marked: "County Surveyor's Office, T22S R6W, 1/4 S 10/11, 1961". Brass cap was found in good condition.
- 7 Southwest Corner Section Section 11
Found Bureau of Land Management brass cap marked: "U.S. Cadastral Survey, T22S R6W, S 10/S11, S15/S14, 1968 Bureau of Land Management". Brass cap was found in good condition.
- 8 South 1/4 Section 11
No evidence of original corner was found. Corner was reestablished by proportionate measurement, on line at the mid-point between the Southwest Section Corner and the Southeast Section Corner of Section 11. Set 5/8 inch by 30 inch rebar with yellow plastic cap marked "Branch Eng LS 1138".
A thorough search was also made for the iron pipe that Wilford Haines called the corner in C.S. File No. M 18-32. No evidence of the pipe was found. Based on other monuments found that were set in his survey, we calculated the approximate position of the pipe to be N22°31'E 13.5 feet from the corner set. Unable to determine the origin of the pipe and did not hold to its calculated position.
Blazed and scribed bearing trees as follows:
1) 10" Douglas Fir scribed "S 1/4 S 11" "BT" bears N54°30'W 78.5 feet.
2) 6" White Oak scribed "S 1/4 S 11" "BT" bears N47°15'E 20.5 feet.
3) 11" White Oak scribed "N 1/4 S 14" "BT" bears S83°15'E 18.0 feet.
4) 12" White Oak scribed "N 1/4 S 14" "BT" bears S45°15'W 134.4 feet.
- 9 Southeast Corner Section 11
Found Douglas County Surveyor's Office brass cap marked: "County Surveyor's Office 1968, T22S R6W, S11/S12, S14/S13". Brass cap was found in good condition.

- 10 Center South 1/16 Corner Section 11
Set 5/8 inch by 30 inch rebar with yellow plastic cap marked "Branch Eng LS 1138". Corner was set on line at the mid-point between the Center Quarter Section Corner and the South Quarter Section Corner of Section 11. Corner fence post for north-south fence line with intersecting fence line running east bears N28°54'W 12.8 feet from set corner.
Blazed and scribed bearing trees as follows:
1) 22" Douglas Fir scribed "CS 1/16 S 11" "BT" bears N49°45'W 13.6 feet.
2) 11" Douglas Fir scribed "CS 1/16 S 11" "BT" bears N52°E 8.8 feet.
- 11 Southeast 1/16 Corner Section 11
Set 5/8 inch by 30 inch rebar with yellow plastic cap marked "Branch Eng LS 1138". Corner was set at the straight line intersection point between the calculated Center East 1/16 Corner and East 1/16 Corner between Sections 11 and 14, and the Center South 1/16 Corner and the calculated South 1/16 Corner between Sections 11 and 12. Set corner is North 14.0 feet from east-west fence line. Area north of the fence has been logged and replanted.
Blazed and scribed bearing trees as follows:
1) 18" Douglas Fir scribed "SE 1/16 S 11" "BT" bears S42°W 22.3 feet.
2) 14" Douglas Fir scribed "SE 1/16 S 11" "BT" bears S32°15'E 56.0 feet.
- 12 Set 5/8 inch by 48 inch rebar with yellow plastic cap marked "Branch Eng LS 1138". Corner falls on the southerly edge of a small stream. Corner was set on the line between the Southwest and the Southeast Quarters of the Southeast Quarter of Section 11. The deed call distance of 515.30 feet north of the intersection of said 1/16 line with the northerly right of way line of the Umpqua Highway was held. However, the point of intersection was found to be at Engineer's Centerline Station 1649+09.4 rather than 1649+04.0 as called for in the deed.
- 13 Set 5/8 inch by 30 inch rebar with yellow plastic cap marked "Branch Eng LS 1138". Corner was set by holding deed call bearings and distances from the found monument at Engineer's Centerline Station 1655+00, left 50.00 feet (Corner No. 15).
- 14 Found 5/8 inch iron rod with aluminum cap marked "Oregon State Hwy". Corner was found to be N89°52'E 1.49 feet from true corner.
Position for corner was established by holding deed call bearing and distance from the found monument at Engineer's Centerline Station 1655+00, left 50.00 feet (Corner No. 15).
- 15 Right of Way Monument Station 1655+00, Left 50.00 Feet
Found 5/8 inch iron rod with aluminum cap marked "Oregon State Hwy". Monument was held as found and was used as one monument to determine the basis of bearings.
- 16 Right of Way Monument Station P.T. 1640+88.1, Left 40.00 Feet
Found bent 1/2 inch iron rod. Monument was found to be N30°43' E 1.96 feet from called position.
- 17 Right of Way Monument Station P.T. 1640+88.1, Right 40.00 Feet
Found 1/2 inch iron rod. Monument was found to be N33°27'E 1.94 feet from called location.
- 18 Found 5/8 inch rebar. Monument was found to be on the northerly right of way of the Umpqua State Highway, N60°58'00"W 6.47 feet from Station P.C. 1666+88.2, left 40.00 feet.
- 19 Right of Way Monument Station P.C. 1666+88.2, Right 40.00 Feet
Found 5/8 inch rebar. Held monument to establish the basis of bearings along with monument found at Station 1655+00, left 50.00 (Corner No. 15). Found corner is N63°11'05"W 0.09 feet from called position.
- 20 Found 'T' iron set by Wilford Haines in C.S. File No. 18-32. Corner is North 0°18'48"W 879.95 feet from the reestablished South 1/4 Corner (Corner No. 8). Haines found a pipe South 867.3 feet from this corner which he called the South 1/4 Corner.

REGISTERED
PROFESSIONAL
LAND SURVEYOR
James A. Branch
OREGON
SEPT. 23, 1977
JAMES A. BRANCH
1138

BRANCH ENGINEERING
212 Q Street
SPRINGFIELD, OREGON 97477
(503) 746-0637

C.S. File No. 63/1104
MAP FILE M1229-27-B

C.S. File No. 63/1104
MAP FILE M1229-27-B