

TF
TF
TF
85-601 W

1/4 CORNER 9 & 16
 FND 1-1/4" IRON PIPE WITH DOUGLAS COUNTY BRASS CAP DATED 1966
 17" FIR, N 0-1/2 E, 120.3' - closed face
 28" CEDAR STUMP, S 13-1/4 E, 54.1'
 SEE RENEWAL NO. 120

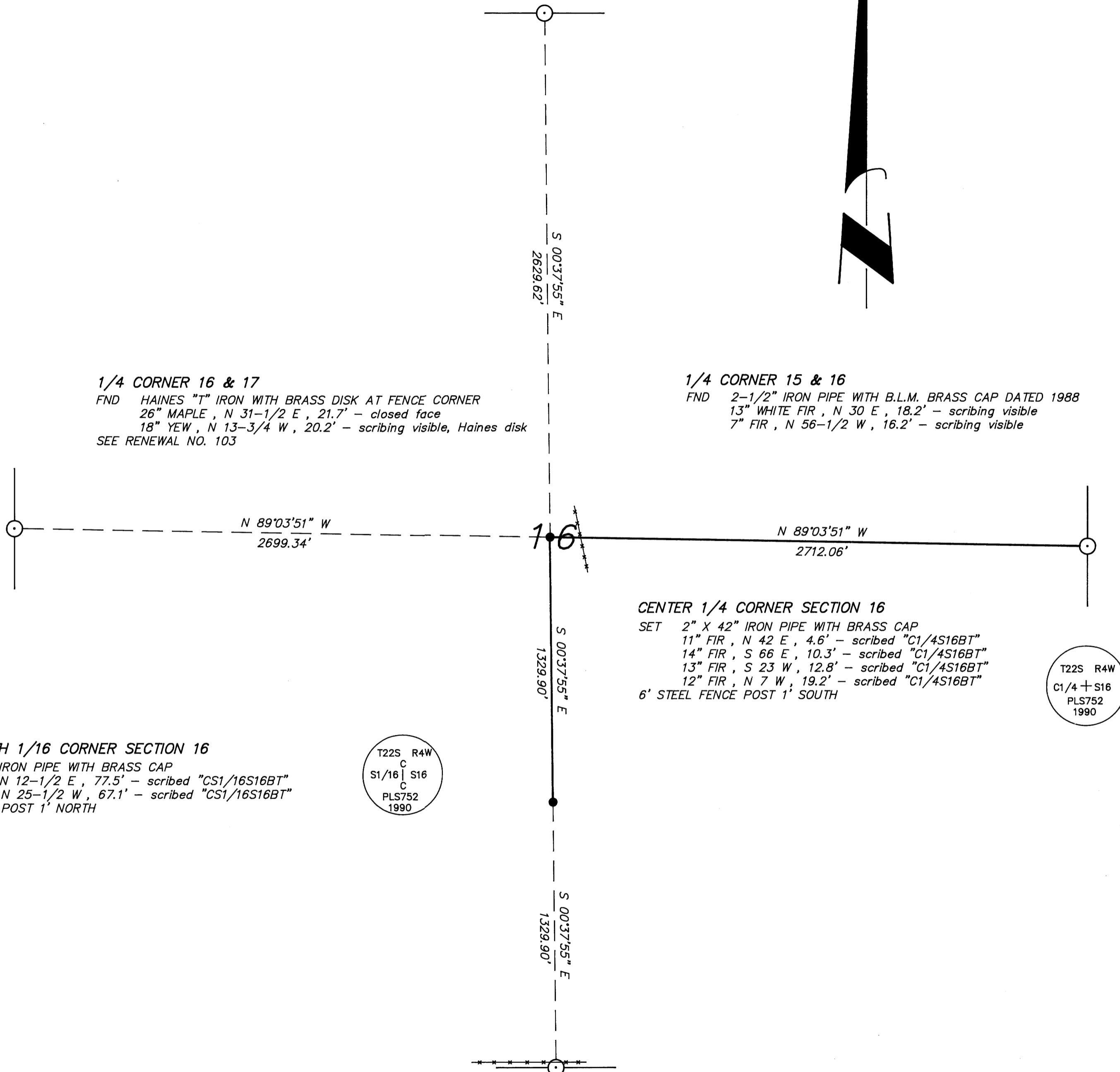
- NARRATIVE -

THIS SURVEY WAS MADE IN DECEMBER, 1989 AND JANUARY, 1990 BY DONALD L. PEEL OF PEEL BAKER LAND SURVEYING, INC., 1385 OAK STREET - SUITE 3, EUGENE, OREGON. THE PURPOSE OF THIS SURVEY WAS TO LOCATE AND MARK SOME OF THE LINES OF THE LAND OWNED BY WEYERHAEUSER COMPANY IN THE SE 1/4 OF SECTION 16, T22S, R4W, W.M. A WILD T1000 THEOMAT AND DIS5 E.D.M. WERE USED TO PERFORM THIS SURVEY. CLOSED RANDOM TRAVERSES WERE RUN BETWEEN FOUND CORNERS FOR CONTROL. BEARINGS WERE BASED ON A SOLAR OBSERVATION. A CLOSED RANDOM TRAVERSE WAS RUN AS NEAR AS POSSIBLE TO THE PROPERTY LINES THAT WERE TO BE MARKED. OFFSETS FROM THE RANDOM TRAVERSE LINE TO THE TRUE PROPERTY LINE WERE CALCULATED AND USED TO DETERMINE THE POSITION OF THE TRUE PROPERTY LINE. THE TRUE PROPERTY LINE WAS MARKED IN THE FIELD BY BLAZING TREES (BLAZES NOTCHED AND PAINTED RED) ON BOTH SIDES OF THE TRUE LINE. THE NORTH, SOUTH, EAST AND WEST 1/4 CORNERS WERE ALL FOUND AND USED FOR CONTROL. THE CENTER 1/4 CORNER WAS SET AT THE POINT OF INTERSECTION OF THE NORTH-SOUTH AND EAST-WEST CENTERLINES. THE CENTER-SOUTH 1/16 CORNER WAS SET AT MIDPOINT BETWEEN THE CENTER 1/4 CORNER AND THE SOUTH 1/4 CORNER. THE HAINES "T" IRON POST AS NOTED IN RENEWAL NO. 69, MARKING THE SOUTH 1/4 CORNER, WAS BADLY BENT AND TWISTED SO I REPLACED SAID MONUMENT WITH A 2" X 42" IRON PIPE WITH BRASS CAP. CORNERS SET IN THIS SURVEY WERE MONUMENTED AS SHOWN ON THIS PLAT. FOR BEARING TREES MARKED IN THIS SURVEY, THE DISTANCE WAS MEASURED FROM THE CORNER TO A "W" NAIL IN THE LOWER BLAZE AND THE BEARINGS WERE MAGNETIC, VARIATION 20'.

1/4 CORNER 16 & 17
 FND HAINES "T" IRON WITH BRASS DISK AT FENCE CORNER
 26" MAPLE, N 31-1/2 E, 21.7' - closed face
 18" YEWE, N 13-3/4 W, 20.2' - scribing visible, Haines disk
 SEE RENEWAL NO. 103

1/4 CORNER 15 & 16
 FND 2-1/2" IRON PIPE WITH B.L.M. BRASS CAP DATED 1988
 13" WHITE FIR, N 30 E, 18.2' - scribing visible
 7" FIR, N 56-1/2 W, 16.2' - scribing visible

REGISTERED
 PROFESSIONAL
 LAND SURVEYOR
 Donald L. Peel
 OREGON
 JULY 8, 1968
 DONALD L. PEEL
 752



CENTER 1/4 CORNER SECTION 16
 SET 2" X 42" IRON PIPE WITH BRASS CAP
 11" FIR, N 42 E, 4.6' - scribed "C1/4S16BT"
 14" FIR, S 66 E, 10.3' - scribed "C1/4S16BT"
 13" FIR, S 23 W, 12.8' - scribed "C1/4S16BT"
 12" FIR, N 7 W, 19.2' - scribed "C1/4S16BT"
 6' STEEL FENCE POST 1' SOUTH

T22S R4W
 C1/4 + S16
 PLS752
 1990

CENTER-SOUTH 1/16 CORNER SECTION 16
 SET 2" X 41" IRON PIPE WITH BRASS CAP
 21" FIR, N 12-1/2 E, 77.5' - scribed "CS1/16S16BT"
 30" FIR, N 25-1/2 W, 67.1' - scribed "CS1/16S16BT"
 6" STEEL FENCE POST 1' NORTH

T22S R4W
 C
 S1/16 | S16
 C
 PLS752
 1990

1/4 CORNER 16 & 21
 FND HAINES "T" IRON (BADLY BENT AND TWISTED)
 38" FIR STUMP, N 12-3/4 E, 10.6' - Weyco plate and "W" nail
 (DISTANCE TO "W" NAIL)
 48" FIR STUMP, S 10-3/4 W, 36.7' - Weyco plate and "W" nail
 (DISTANCE TO "W" NAIL)
 SET REPLACED "T" IRON WITH 2" X 42" IRON PIPE WITH BRASS CAP

T22S R4W
 1/4 S16
 S21
 PLS752
 1990

BASIS OF BEARING : SOLAR OBSERVATION
 SCALE : 1" = 400'

○ CORNERS FOUND
 ● CORNERS SET THIS SURVEY
 — PROPERTY LINE BLAZED

SURVEY IN
 SE 1/4 SECTION 16, T22S, R4W, W.M.
 DOUGLAS COUNTY, OREGON
 FOR
 WEYERHAEUSER COMPANY
 BY
 PEEL BAKER LAND SURVEYING, INC.
 JANUARY 22, 1990

COUNTY SURVEYORS FILE DATA
 DO NOT REMOVE FROM OFFICE

W 109 - 58