

HILL INTERESTS

SE1/4, SEC. 10 & NE1/4, NE1/4, SEC. 15, T.28 S., R.8 W., W.M.

DOUGLAS COUNTY, OREGON

SCALE: 1 = 500 FT

NOV. 27, 1989

COUNTY SURVEYORS WILL NOT DO NOT REMOVE FROM OFFICE

FILED

FEB 1 1990

COUNTY SURVEYOR DOUGLAS COUNTY, ORE.

NARRATIVE

THE PURPOSE OF THIS SURVEY WAS TO ESTABLISH THE CENTER-SOUTH 1/16 CORNER OF SECTION 10 AND DESCRIBE THE EXISTING ROAD FROM THE HILL INTERESTS PARCEL TO THE COUNTY ROAD FOR A RECORDABLE EASEMENT. WE SET 1/2" X 24" IRON RODS WITH PLASTIC CAPS MARKED "LS 992, BAI" FOR THE POINT OF INTERSECTION (P.I.'S) OF THE CENTERLINE TANGENTS FOR SAID ROAD EASEMENT.

MY BEARINGS ARE BASED ON THE EAST LINE OF THE SW1/4 OF SECTION 10 PER THE 1969 B.L.M. SURVEY. THE APPROXIMATE INTERSECTION OF THE ROAD CENTERLINE WITH THE SOUTH LINE OF THE SE1/4, SE1/4 OF SECTION 10 IS COMPUTED BASED ON A BEARING ROTATION OF THE SURVEY MAP M42-66.

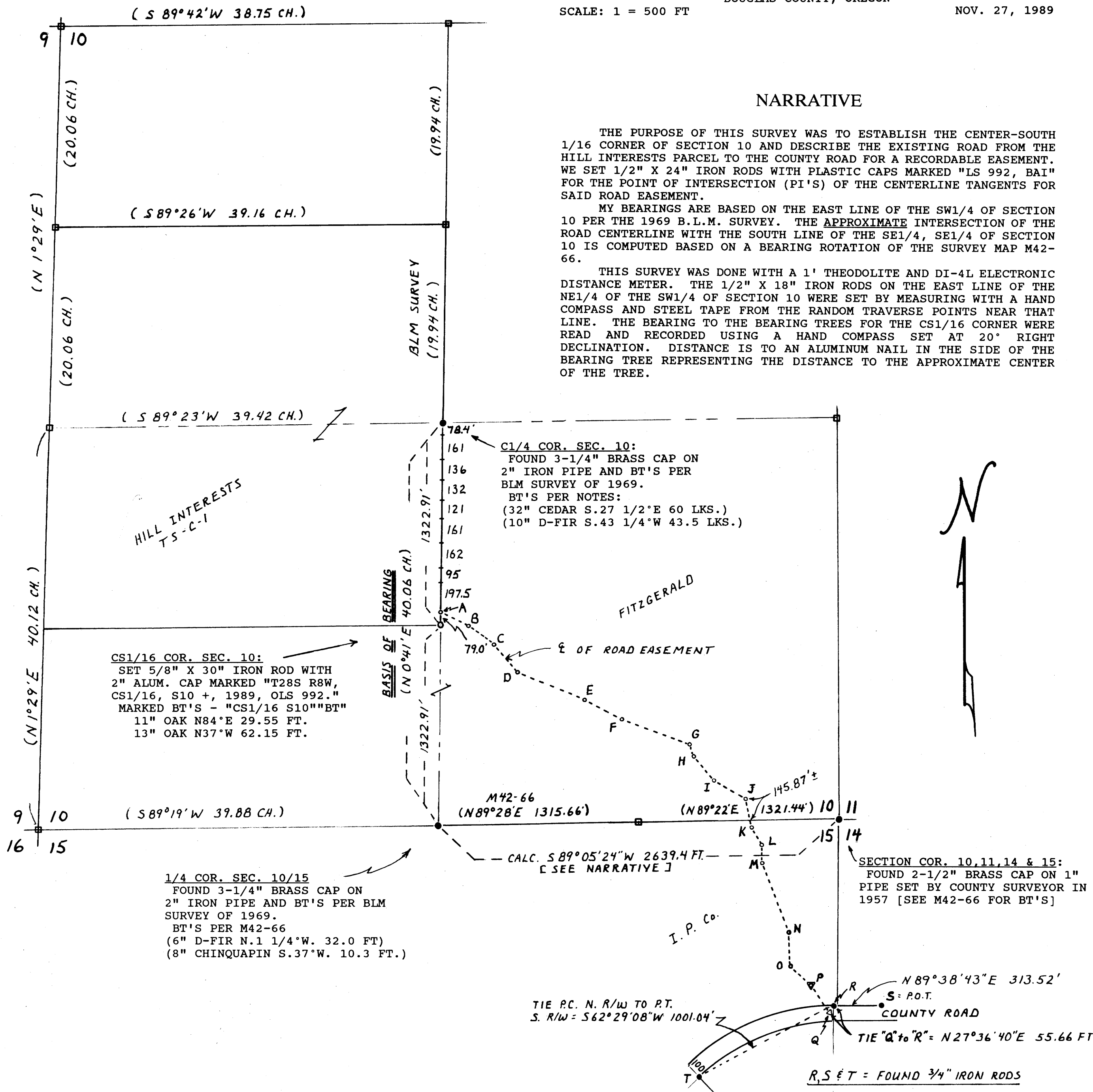
THIS SURVEY WAS DONE WITH A 1' THEODOLITE AND DI-4L ELECTRONIC DISTANCE METER. THE 1/2" X 18" IRON RODS ON THE EAST LINE OF THE NE1/4 OF THE SW1/4 OF SECTION 10 WERE SET BY MEASURING WITH A HAND COMPASS AND STEEL TAPE FROM THE RANDOM TRAVERSE POINTS NEAR THAT LINE. THE BEARING TO THE BEARING TREES FOR THE CS1/16 CORNER WERE READ AND RECORDED USING A HAND COMPASS SET AT 20° RIGHT DECLINATION. DISTANCE IS TO AN ALUMINUM NAIL IN THE SIDE OF THE BEARING TREE REPRESENTING THE DISTANCE TO THE APPROXIMATE CENTER OF THE TREE.

COURSES TO P.I.'S ON ROAD EASEMENT

- A S 64° 30' 31" E 200.15 FT.
- B S 53° 51' 55" E 210.50 FT.
- C S 40° 10' 34" E 240.95 FT.
- D S 67° 47' 12" E 473.66 FT.
- E S 62° 18' 28" E 278.42 FT.
- F S 69° 38' 00" E 477.96 FT.
- G S 18° 32' 09" E 78.91 FT.
- H S 39° 59' 11" E 209.38 FT.
- I S 59° 36' 05" E 241.99 FT.
- J S 11° 45' 26" E 192.69 FT.
- K S 31° 21' 01" E 132.22 FT.
- L S 00° 38' 37" E 116.36 FT.
- M S 21° 11' 01" E 493.70 FT.
- N S 02° 27' 55" E 225.68 FT.
- O S 48° 07' 49" E 184.64 FT.
- P S 34° 28' 58" E 216.18 FT.
- Q = "PK" NAIL NEAR CENTERLINE OF PAVED ROAD.

CURVE DATA

"B" I = 10° 38' 36" R = 250.00 FT. T = 23.29 FT. L = 46.44 FT. C = S.59°11'13"E 46.37'	"C" I = 13° 41' 21" R = 450.00 FT. T = 54.01 FT. L = 107.51 FT. C = S.47°01'15"E 107.26'	"D" I = 27° 36'38" R = 170.00 FT. T = 41.77 FT. L = 81.92 FT. C = S.53°58'53"E 81.13'
"E" I = 5° 28' 44" R = 800.00 FT. T = 38.28 FT. L = 76.5 FT. C = S.65°02'50"E 76.47'	"F" I = 7° 19' 32" R = 1000.00 FT. T = 64.01 FT. L = 127.86 FT. C = S.65°58'14"E 127.77'	"G" I = 51° 05' 51" R = 112.78 FT. T = 53.91 FT. L = 100.58 FT. C = S.44°05'05"E 97.28'
"H" I = 21° 27' 02" R = 132.00 FT. T = 25.0 FT. L = 49.41 FT. C = S.29°15'40"E 49.13'	"I" I = 19° 36' 54" R = 330.0 FT. T = 57.04 FT. L = 112.97 FT. C = S.49°47'38"E 112.42'	"J" I = 47° 50' 39" R = 85.00 FT. T = 37.71 FT. L = 70.98 FT. C = S.35°40'46"E 68.93'
"K" I = 19° 35' 35" R = 200.00 FT. T = 34.53 FT. L = 68.39 FT. C = S.21°33'14"E 68.06'	"L" I = 30° 42' 24" R = 110.00 FT. T = 30.20 FT. L = 58.95 FT. C = S.15°59'49"E 58.24'	"M" I = 20° 32' 24" R = 180.00 FT. T = 32.61 FT. L = 64.53 FT. C = S.10°54'49"E 64.18'
"N" I = 18° 43' 06" R = 370.00 FT. T = 60.98 FT. L = 120.88 FT. C = S.11°49'28"E 120.34'	"O" I = 45° 39' 54" R = 200.00 FT. T = 84.20 FT. L = 159.40 FT. C = S.25°17'52"E 155.22'	"P" I = 13° 38' 51" R = 200.00 FT. T = 23.93 FT. L = 47.64 FT. C = S.41°18'24"E 47.53'



REGISTERED PROFESSIONAL LAND SURVEYOR

Arnold Brubaker

OREGON JULY 13 1973 ARNOLD BRUBAKER 992

LEGEND

- = MONUMENTS OF RECORD NOT VISITED
- = FOUND MONUMENTS OF RECORD
- = NEW CORNER MONUMENT SET
- ▽ = SET RAIL ROAD SPIKE FOR P.I.
- ∇ = SET "PK" NAIL NEAR CENTERLINE
- = SET 1/2" X 24" REBAR AT P.I.'S
- ⊕ = LOCATION OF 1/2" X 18" REBAR SET ON LINE [SEE NARRATIVE]

BARRINGER & ASSOCIATES, INC. 3210 HWY. 20 SWEET HOME, OREGON 97366

M109-53

M109-53