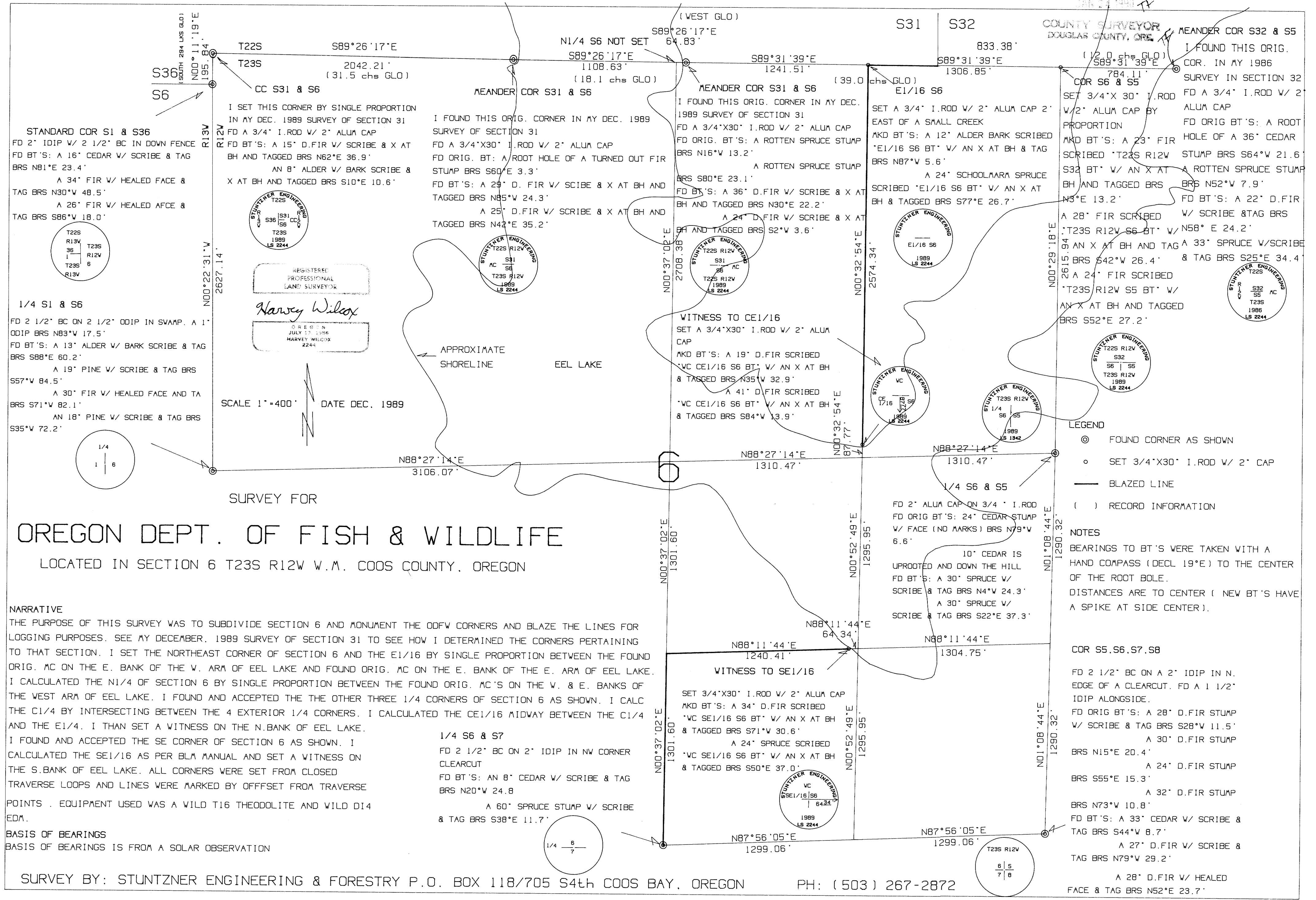


DO NOT REMOVE FROM OFFICE

FILED

JAN 24 1990 TF



# OREGON DEPT. OF FISH & WILDLIFE

LOCATED IN SECTION 6 T23S R12W W.M. COOS COUNTY, OREGON

**NARRATIVE**

THE PURPOSE OF THIS SURVEY WAS TO SUBDIVIDE SECTION 6 AND MONUMENT THE ODFW CORNERS AND BLAZE THE LINES FOR LOGGING PURPOSES. SEE MY DECEMBER, 1989 SURVEY OF SECTION 31 TO SEE HOW I DETERMINED THE CORNERS PERTAINING TO THAT SECTION. I SET THE NORTHEAST CORNER OF SECTION 6 AND THE E1/16 BY SINGLE PROPORTION BETWEEN THE FOUND ORIG. MC ON THE E. BANK OF THE W. ARM OF EEL LAKE AND FOUND ORIG. MC ON THE E. BANK OF THE E. ARM OF EEL LAKE. I CALCULATED THE N1/4 OF SECTION 6 BY SINGLE PROPORTION BETWEEN THE FOUND ORIG. MC'S ON THE W. & E. BANKS OF THE WEST ARM OF EEL LAKE. I FOUND AND ACCEPTED THE OTHER THREE 1/4 CORNERS OF SECTION 6 AS SHOWN. I CALC THE C1/4 BY INTERSECTING BETWEEN THE 4 EXTERIOR 1/4 CORNERS. I CALCULATED THE CE1/16 MIDWAY BETWEEN THE C1/4 AND THE E1/4. I THEN SET A WITNESS ON THE N.BANK OF EEL LAKE. I FOUND AND ACCEPTED THE SE CORNER OF SECTION 6 AS SHOWN. I CALCULATED THE SE1/16 AS PER BLM MANUAL AND SET A WITNESS ON THE S.BANK OF EEL LAKE. ALL CORNERS WERE SET FROM CLOSED TRAVERSE LOOPS AND LINES WERE MARKED BY OFFSET FROM TRAVERSE POINTS. EQUIPMENT USED WAS A WILD T16 THEODOLITE AND WILD D14 EDM.

**BASIS OF BEARINGS**  
BASIS OF BEARINGS IS FROM A SOLAR OBSERVATION

**1/4 S6 & S7**  
FD 2 1/2" BC ON 2" IDIP IN NW CORNER CLEARCUT  
FD BT'S: AN 8" CEDAR W/ SCRIBE & TAG BRS N20°W 24.8'  
A 60" SPRUCE STUMP W/ SCRIBE & TAG BRS S38°E 11.7'

**10" CEDAR IS UPROOTED AND DOWN THE HILL**  
FD BT'S: A 30" SPRUCE W/ SCRIBE & TAG BRS N4°W 24.3'  
A 30" SPRUCE W/ SCRIBE & TAG BRS S22°E 37.3'

**LEGEND**

- ◎ FOUND CORNER AS SHOWN
- SET 3/4"X30" I.ROD W/ 2" CAP
- BLAZED LINE
- ( ) RECORD INFORMATION

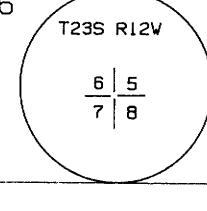
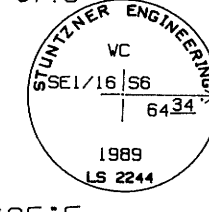
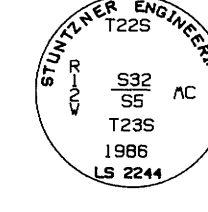
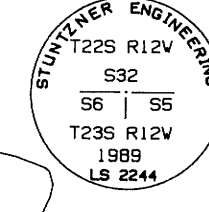
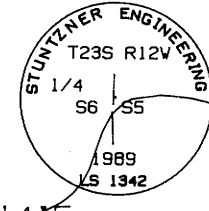
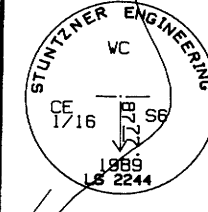
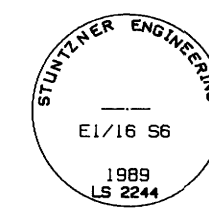
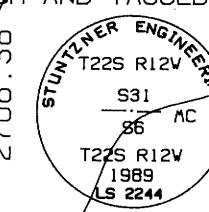
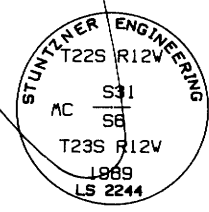
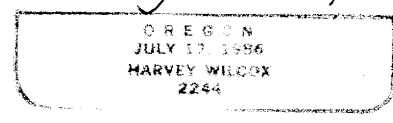
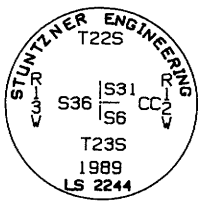
**NOTES**

BEARINGS TO BT'S WERE TAKEN WITH A HAND COMPASS (DECL. 19°E) TO THE CENTER OF THE ROOT BOLE.  
DISTANCES ARE TO CENTER ( NEW BT'S HAVE A SPIKE AT SIDE CENTER ).

**COR S5, S6, S7, S8**

FD 2 1/2" BC ON A 2" IDIP IN N. EDGE OF A CLEARCUT. FD A 1 1/2" IDIP ALONGSIDE.  
FD ORIG BT'S: A 28" D.FIR STUMP W/ SCRIBE & TAG BRS S28°W 11.5'  
A 30" D.FIR STUMP BRS N15°E 20.4'  
A 24" D.FIR STUMP BRS S55°E 15.3'  
A 32" D.FIR STUMP BRS N73°W 10.8'  
FD BT'S: A 33" CEDAR W/ SCRIBE & TAG BRS S44°W 8.7'  
A 27" D.FIR W/ SCRIBE & TAG BRS N79°W 29.2'  
A 28" D.FIR W/ HEALED FACE & TAG BRS N52°E 23.7'

SURVEY BY: STUNTZNER ENGINEERING & FORESTRY P.O. BOX 118/705 S4th COOS BAY, OREGON PH: (503) 267-2872



FILE M109-52

FILE M109-52