

COUNTY SURVEYORS HILL DATA
DO NOT REMOVE FROM OFFICE

FILED
JAN 11 1989
COUNTY SURVEYOR
DOUGLAS COUNTY, OREGON
63/102
U.S. FILE
Map File M109-42

SURVEY FOR
INTERNATIONAL PAPER COMPANY
IN
SECTION 30, T21S, R9W, W.M.
DOUGLAS COUNTY, OREGON
BY
ROBERTS SURVEYING INC.
29 WEST 29TH STREET
EUGENE, OREGON 97405

DECEMBER 26, 1989
SCALE 1" = 400'

WEST 1/4 CORNER SECTION 30

FD. 1919 G.L.O. BRASS CAP, PIPE BROKEN, AND A
1973 DOUGLAS COUNTY BRASS CAP.
36" FIR STUMP, N75°E, 22.0' (SCAR VIS.), 1919 B.T.
60" DOWNED FIR, S20°E, 17.8' (SCAR VIS.), 1919 B.T.
14" FIR, N67°E, 4.8' (SCAR VIS.), NO RECORD
28" HEMLOCK, S61°W, 15.0' (SCAR VIS.), NO RECORD

N.E. CORNER SECTION 36

FD. 1919 G.L.O. BRASS CAP, PIPE BROKEN
38" FIR, N65°W, 58.5' (SCAR VIS.), 1919 B.T.
20" HEMLOCK, N81°W, 20.8' (SCRIBE VIS.), NO RECORD
SET 3/4" x 36" ALUM. ROD WITH 3/4" ALUM. CAP BESIDE
BROKEN PIPE. BURIED PURPLE M.M. BESIDE ALUM. ROD.
16" HEMLOCK, S42°E, 41.5' (SCRIBED/PAINTED RED)
19" HEMLOCK, S69°W, 6.7' (SCRIBED/PAINTED RED)

"A" SOUTH 1/16 CORNER SECTION 30

SET 3/4" x 12" ALUMINUM ROD WITH 3/4" ALUMINUM CAP
(BURIED PURPLE M.M. UNDER 12" ALUMINUM ROD)
14" HEMLOCK, S40°E, 56.3' (SCRIBED/PAINTED RED)
15" HEMLOCK, N76°E, 29.1' (SCRIBED/PAINTED RED)

S.W. CORNER SECTION 30

FD. 1919 G.L.O. BRASS CAP
28" CEDAR, S16°E, 43.7' (SCRIBE VIS.), 1919 B.T.
36" CEDAR, N29°E, 47.3' (SCAR VIS.), 1919 B.T.

"B" WEST 1/16 CORNER SECTION 30

SET 3/4" x 36" ALUMINUM ROD WITH 3/4" ALUMINUM CAP.
(BURIED PURPLE M.M. BESIDE 36" ALUMINUM ROD)
9" ALDER, S07°E, 27.2' (BARK SCRIBED/PAINTED RED)
28" FIR, N84°E, 13.5' (SCRIBED/PAINTED RED)

SOUTH 1/4 CORNER SECTION 30

SET 3/4" x 36" ALUMINUM ROD WITH 3/4" ALUMINUM CAP.
(BURIED PURPLE M.M. BESIDE 36" ALUMINUM ROD)
10" ALDER, S58°W, 6.6' (BARK SCRIBED/PAINTED RED)
10" HEMLOCK, N57°W, 16.2' (SCRIBED/PAINTED RED)
10" ALDER, N03°E, 18.0' (BARK SCRIBED/PAINTED RED)
11" ALDER, S31°E, 21.8' (BARK SCRIBED/PAINTED RED)

"C" EAST 1/16 CORNER SECTION 30

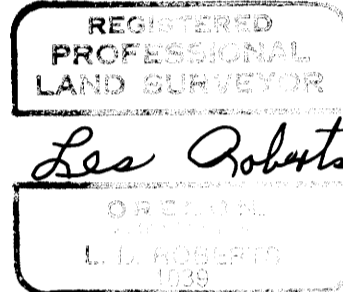
SET 3/4" x 36" ALUMINUM ROD WITH 3/4" ALUMINUM CAP
(BURIED PURPLE M.M. BESIDE 36" ALUMINUM ROD)
13" ALDER, N44°E, 28.0' (BARK SCRIBED/PAINTED RED)
16" ALDER, S07°E, 19.0' (BARK SCRIBED/PAINTED RED)

S.E. CORNER SECTION 30

FD. 1967 B.L.M. BRASS CAP.
40" FIR STUMP, N19°W, 16.1' (SCAR VIS.), 1894 B.T.
48" FIR STUMP, N17°E, 58.5' (SCAR VIS.), 1894 B.T.
19" CEDAR, S84°W, 42.4' (SCAR VIS.), 1967 B.T.
26" CEDAR, S14°E, 50.8' (SCAR VIS.), NO RECORD
32" CEDAR, N39°W, 25.5' (SCAR VIS.), NO RECORD

LEGEND

- CORNERS FOUND AND USED FOR CONTROL.
- CORNERS SET, 3/4" ALUMINUM RODS WITH 3/4" ALUMINUM CAPS. CAPS STAMPED S-T-R, DATE & P.L.S. 1039.
- LINES MARKED AND BLAZED THIS SURVEY.
- () DATA OF RECORD
- (M.M.) INDICATES LOCATION OF BURIED MAGNETIC MARKERS. MARKERS ARE FLUORESCENT ORANGE IN COLOR AND ARE BURIED, 12" TO 18" DEEP, ALONG LINE AS SHOWN.
- BASIS OF BEARING, SOUTH LINE SECTION 30 FROM 1894 G.L.O. SURVEY.
- DISTANCES TO B.T.'S ARE CENTER MEASURE.
- ALL NEW B.T.'S ARE SCRIBED AND HAVE A BRASS WASHER STAMPED "P.L.S. 1039" NAILED TO LOWER BLAZE. SCRIBED BLAZES ARE PAINTED RED.
- ALL NEW B.T.'S HAVE A 6" STEEL SPIKE DRIVEN INTO THE CENTER OF THE TREE TO SERVE AS A CHAINING POINT FOR MEASURED DISTANCE.

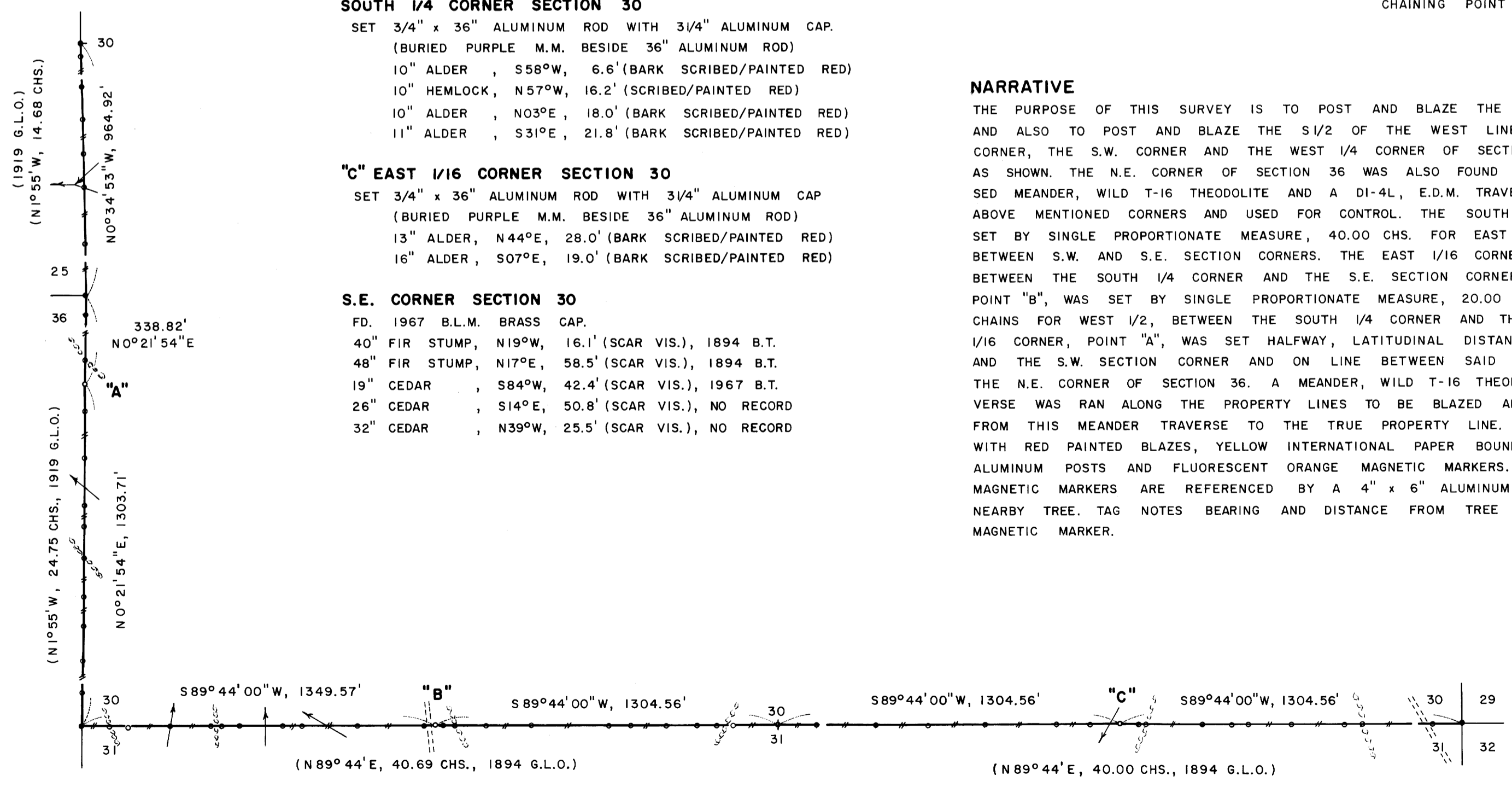


NARRATIVE

THE PURPOSE OF THIS SURVEY IS TO POST AND BLAZE THE SOUTH BOUNDARY OF SECTION 30 AND ALSO TO POST AND BLAZE THE S1/2 OF THE WEST LINE OF SECTION 30. THE S.E. CORNER, THE S.W. CORNER AND THE WEST 1/4 CORNER OF SECTION 30 WERE FOUND IN THE FIELD AS SHOWN. THE N.E. CORNER OF SECTION 36 WAS ALSO FOUND IN THE FIELD AS SHOWN. A CLOSED MEANDER, WILD T-16 THEODOLITE AND A DI-4L, E.D.M. TRAVERSE WAS RUN BETWEEN THESE ABOVE MENTIONED CORNERS AND USED FOR CONTROL. THE SOUTH 1/4 CORNER OF SECTION 30 WAS SET BY SINGLE PROPORTIONATE MEASURE, 40.00 CHS. FOR EAST 1/2 AND 40.69 CHS. FOR WEST 1/2, BETWEEN S.W. AND S.E. SECTION CORNERS. THE EAST 1/16 CORNER, POINT "C", WAS SET HALFWAY BETWEEN THE SOUTH 1/4 CORNER AND THE S.E. SECTION CORNER AS SHOWN. THE WEST 1/16 CORNER, POINT "B", WAS SET BY SINGLE PROPORTIONATE MEASURE, 20.00 CHAINS FOR EAST 1/2 AND 20.69 CHAINS FOR WEST 1/2, BETWEEN THE SOUTH 1/4 CORNER AND THE S.W. SECTION CORNER. THE SOUTH 1/16 CORNER, POINT "A", WAS SET HALFWAY, LATITUDINAL DISTANCE, BETWEEN THE WEST 1/4 CORNER AND THE S.W. SECTION CORNER AND ON LINE BETWEEN SAID S.W. CORNER OF SECTION 30 AND THE N.E. CORNER OF SECTION 36. A MEANDER, WILD T-16 THEODOLITE AND A DI-4L, E.D.M. TRAVERSE WAS RUN ALONG THE PROPERTY LINES TO BE BLAZED AND POSTED. OFFSETS WERE COMPUTED FROM THIS MEANDER TRAVERSE TO THE TRUE PROPERTY LINE. PROPERTY LINES WERE MARKED WITH RED PAINTED BLAZES, YELLOW INTERNATIONAL PAPER BOUNDARY LINE DECALS ATTACHED TO 72" ALUMINUM POSTS AND FLUORESCENT ORANGE MAGNETIC MARKERS. ALUMINUM POSTS AND BURIED MAGNETIC MARKERS ARE REFERENCED BY A 4" x 6" ALUMINUM BOUNDARY LINE TAG NAILED TO A NEARBY TREE. TAG NOTES BEARING AND DISTANCE FROM TREE TO ALUMINUM POST OR BURIED MAGNETIC MARKER.

LOCATION OF BURIED MAGNETIC MARKERS

S.E. COR.	0'	WEST (AL. POST)
S30-1	114'	WEST (M.M. & AL. POST)
S30-2	381'	WEST (M.M. & AL. POST)
S30-3	451'	WEST (M.M.)
S30-4	652'	WEST (M.M. & AL. POST)
S30-5	812'	WEST (M.M. & AL. POST)
S30-6	872'	WEST (M.M.)
S30-7	991'	WEST (M.M. & AL. POST)
S30-8	1201'	WEST (M.M. & AL. POST)
S30-9	1234'	WEST (M.M.)
E. 1/16 COR.	1305'	WEST (M.M. & AL. POST)
S30-11	1415'	WEST (M.M.)
S30-12	1547'	WEST (M.M. & AL. POST)
S30-13	1818'	WEST (M.M. & AL. POST)
S30-14	2036'	WEST (M.M. & AL. POST)
S30-15	2236'	WEST (M.M. & AL. POST)
S30-16	2461'	WEST (M.M. & AL. POST)
S. 1/4 COR.	2609'	WEST (M.M. & AL. POST)
S30-18	172'	WEST (M.M.)
S30-19	229'	WEST (M.M. & AL. POST)
S30-20	304'	WEST (M.M.)
S30-21	418'	WEST (M.M. & AL. POST)
S30-22	553'	WEST (M.M.)
S30-23	637'	WEST (M.M. & AL. POST)
S30-24	934'	WEST (M.M. & AL. POST)
S30-25	1106'	WEST (M.M.)
S30-26	1224'	WEST (M.M. & AL. POST)
S30-27	1270'	WEST (M.M.)
W. 1/16 COR.	1305'	WEST (M.M. & AL. POST)
S30-29	1338'	WEST (M.M.)
S30-30	1598'	WEST (M.M. & AL. POST)
S30-31	1810'	WEST (M.M.)
S30-32	1883'	WEST (M.M. & AL. POST)
S30-33	2050'	WEST (M.M.)
S30-34	2114'	WEST (M.M. & AL. POST)
S30-35	2155'	WEST (M.M.)
S30-36	2312'	WEST (M.M. & AL. POST)
S30-37	2474'	WEST (M.M. & AL. POST)
S30-38	2542'	WEST (M.M.)
S.W. COR.	2654'	WEST (AL. POST)
W30-1	135'	NORTH (M.M.)
W30-2	252'	NORTH (M.M. & AL. POST)
W30-3	380'	NORTH (M.M.)
W30-4	495'	NORTH (M.M. & AL. POST)
W30-5	641'	NORTH (M.M. & AL. POST)
W30-6	759'	NORTH (M.M.)
W30-7	840'	NORTH (M.M. & AL. POST)
W30-8	1018'	NORTH (M.M. & AL. POST)
W30-9	1198'	NORTH (NO M.M.)
S. 1/16 COR.	1304'	NORTH (M.M. & AL. POST)
W30-10	1393'	NORTH (NO M.M.)
W30-11	1470'	NORTH (M.M. & AL. POST)
N.E. COR.	1643'	NORTH (M.M. & AL. POST)
W30-12	194'	NORTH (M.M. & AL. POST)
W30-13	411'	NORTH (M.M. & AL. POST)
W30-14	536'	NORTH (M.M.)
W30-15	663'	NORTH (M.M. & AL. POST)
W30-16	791'	NORTH (M.M.)
W30-17	907'	NORTH (M.M. & AL. POST)
W. 1/4 COR.	965'	NORTH (AL. POST)



U.S. FILE 63/102
Map File M109-42