

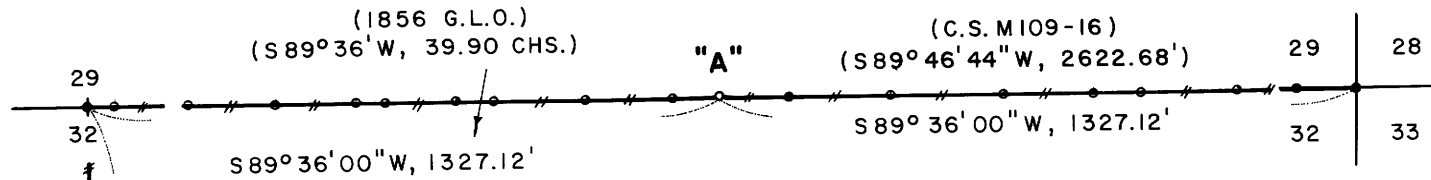
SURVEY FOR DO NOT REMOVE FROM OFFICE  
INTERNATIONAL PAPER COMPANY

IN  
NE 1/4 SECTION 32, T28S, R8W  
DOUGLAS COUNTY, OREGON

BY  
ROBERTS SURVEYING INC.  
29 WEST 29TH STREET  
EUGENE, OREGON 97405

DECEMBER 13, 1989  
SCALE 1" = 400'

63 102  
M109-38  
DOUGLAS COUNTY, OREGON



**N.E. CORNER SECTION 32**

- FD. 1957 DOUGLAS COUNTY BRASS CAP
- 12" FIR SNAG, S62°W, 13.2' (SCAR VIS.), 1856 B.T.
- 30" FIR STUMP, S38°E, 37.1' (NO MARKS), 1856 B.T.
- 38" FIR STUMP, N19°W, 20.9' (BARK SCRIBE), 1856 B.T.
- 14" CEDAR, N88°E, 38.3' (SCAR VIS.), 1957 B.T.
- 18" W. FIR, N37°W, 43.3' (SCAR VIS.), 1957 B.T.
- 20" W. FIR, N74°E, 4.9' (SCAR VIS.), 1957 B.T.
- 22" W. FIR, S21°W, 19.5' (SCAR VIS.), 1957 B.T.
- 13" W. FIR, S32°E, 38.0' (SCAR VIS.), 1975 B.T.

**"A" EAST 1/16 CORNER SECTION 32**

- SET 3/4" x 24" ALUMINUM ROD WITH 3/4" CAP.
- (BURIED PURPLE M.M. UNDER 24" ROD)
- 8" FIR, S21°E, 12.5' (SCRIBED/PAINTED RED)
- 15" W. FIR, N59°W, 25.7' (SCRIBED/PAINTED RED)

**NORTH 1/4 CORNER SECTION 32**

- FD. 1" IRON ROD AT WEST-NORTH FENCE CORNER.
- 28" W. FIR, S60°E, 2.0' (SCAR VIS.), 1936 B.T.
- 48" FIR, S88°E, 15.0' (BARK SCRIBE), 1936 B.T.

**"B" C.N. 1/16 CORNER SECTION 32**

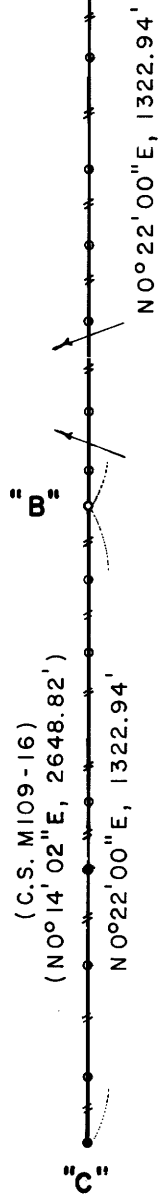
- SET 3/4" x 24" ALUMINUM ROD WITH 3/4" CAP.
- (BURIED PURPLE M.M. UNDER 24" ROD)
- 13" FIR, S15°W, 20.2' (SCRIBED/PAINTED RED)
- 22" W. FIR, N55°W, 7.8' (SCRIBED/PAINTED RED)

**"C" CENTER 1/4 CORNER SEC. 32 BY C.S. M109-16**

- FD. 3/4" IRON PIN SET IN C.S. M109-16
- 21" W. FIR, N39°E, 21.9' (SCAR VIS.), 1968 B.T.

**LEGEND**

- CORNERS FOUND AND USED FOR CONTROL
- o CORNERS SET, 3/4" ALUMINUM RODS WITH 3/4" ALUMINUM CAPS. CAPS STAMPED S-T-R, DATE AND P.L.S. 1039.
- LINE MARKED AND BLAZED THIS SURVEY
- ( ) DATA OF RECORD
- (M.M.) INDICATES LOCATION OF BURIED MAGNETIC MARKERS. MARKERS ARE FLUORESCENT ORANGE IN COLOR & ARE BURIED, 12" TO 18" DEEP, ALONG LINE AS SHOWN.
- BASIS OF BEARING, EAST 1/2 OF NORTH LINE FROM 1856 G.L.O. SURVEY.
- DISTANCES TO B.T.'S ARE CENTER MEASURE
- ALL NEW B.T.'S ARE SCRIBED AND HAVE A BRASS WASHER STAMPED "P.L.S. 1039" NAILED TO LOWER BLAZE. SCRIBED BLAZES ARE PAINTED RED
- ALL NEW B.T.'S HAVE A 6" STEEL SPIKE DRIVEN INTO THE CENTER OF THE TREE TO SERVE AS A CHAINING POINT FOR MEASURED DISTANCE.



**NARRATIVE,** THE PURPOSE OF THIS SURVEY IS TO POST AND BLAZE THE N1/2 OF THE N-S CENTERLINE AND ALSO TO POST AND BLAZE THE E1/2 OF THE NORTH LINE OF SECTION 32. THE CENTER 1/4 CORNER, THE NORTH 1/4 CORNER AND THE N.E. SECTION CORNER WERE FOUND IN THE FIELD AS SHOWN. A CLOSED MEANDER, WILD T-16 THEODOLITE AND A DI-4L, E.D.M. TRAVERSE WAS RUN BETWEEN THESE ABOVE MENTIONED CORNERS AND USED FOR CONTROL. A MEANDER, WILD T-16 THEODOLITE AND A DI-4L, E.D.M. TRAVERSE WAS RAN ALONG THE PROPERTY LINES TO BE BLAZED AND POSTED. OFFSETS WERE COMPUTED FROM THIS MEANDER TRAVERSE TO THE TRUE PROPERTY LINE. PROPERTY LINES WERE MARKED WITH RED PAINTED BLAZES, YELLOW INTERNATIONAL PAPER BOUNDARY LINE DECALS ATTACHED TO 72" ALUMINUM POSTS AND FLUORESCENT ORANGE MAGNETIC MARKERS. ALUMINUM POSTS AND BURIED MAGNETIC MARKERS ARE REFERENCED BY A 4" x 6" ALUMINUM BOUNDARY LINE TAG NAILED TO A NEARBY TREE. TAG NOTES BEARING AND DISTANCE FROM TREE TO ALUMINUM POST OR BURIED MAGNETIC MARKERS.

| LOCATION OF BURIED MAGNETIC MARKERS |       |                         |
|-------------------------------------|-------|-------------------------|
| N1/4 COR.                           | 0'    | SOUTH (AL. POST)        |
| N-S 1/2 32-1                        | 220'  | SOUTH (M.M. & AL. POST) |
| N-S 1/2 32-2                        | 379'  | SOUTH (M.M. & AL. POST) |
| N-S 1/2 32-3                        | 607'  | SOUTH (M.M. & AL. POST) |
| N-S 1/2 32-4                        | 770'  | SOUTH (M.M. & AL. POST) |
| N-S 1/2 32-5                        | 929'  | SOUTH (M.M. & AL. POST) |
| N-S 1/2 32-6                        | 1122' | SOUTH (M.M. & AL. POST) |
| N-S 1/2 32-7                        | 1241' | SOUTH (M.M.)            |
| C.N. 1/16                           | 1323' | SOUTH (M.M. & AL. POST) |
| N-S 1/2 32-9                        | 1464' | SOUTH (M.M. & AL. POST) |
| N-S 1/2 32-10                       | 1620' | SOUTH (M.M. & AL. POST) |
| N-S 1/2 32-11                       | 1929' | SOUTH (M.M. & AL. POST) |
| N-S 1/2 32-12                       | 2070' | SOUTH (M.M. & AL. POST) |
| N-S 1/2 32-13                       | 2272' | SOUTH (M.M. & AL. POST) |
| N-S 1/2 32-14                       | 2498' | SOUTH (M.M. & AL. POST) |
| C. 1/4 COR.                         | 2646' | SOUTH (M.M. & AL. POST) |
|                                     |       |                         |
| N1/4 COR.                           | 0'    | EAST (AL. POST)         |
| N32-1                               | 52'   | EAST (M.M.)             |
| N32-2                               | 208'  | EAST (M.M. & AL. POST)  |
| N32-3                               | 393'  | EAST (M.M. & AL. POST)  |
| N32-4                               | 559'  | EAST (M.M. & AL. POST)  |
| N32-5                               | 618'  | EAST (M.M.)             |
| N32-6                               | 768'  | EAST (M.M. & AL. POST)  |
| N32-7                               | 851'  | EAST (M.M.)             |
| N32-8                               | 1045' | EAST (M.M. & AL. POST)  |
| N32-9                               | 1222' | EAST (M.M.)             |
| E1/16 COR.                          | 1327' | EAST (M.M. & AL. POST)  |
| N32-10                              | 1469' | EAST (M.M. & AL. POST)  |
| N32-11                              | 1680' | EAST (M.M. & AL. POST)  |
| N32-12                              | 1916' | EAST (M.M. & AL. POST)  |
| N32-13                              | 2099' | EAST (M.M.)             |
| N32-14                              | 2201' | EAST (M.M. & AL. POST)  |
| N32-15                              | 2399' | EAST (M.M. & AL. POST)  |
| N32-16                              | 2523' | EAST (M.M.)             |
| N.E. COR.                           | 2654' | EAST (AL. POST)         |

**NOTE,** CENTER 1/4 CORNER AS SET IN C.S. M109-16 MAY BE IN ERROR. SEE 1975 B.L.M. SURVEY OF EAST LINE OF SECTION FOR DETAILS ON 2 EAST 1/4 CORNERS.

REGISTERED PROFESSIONAL LAND SURVEYOR  
*Les Roberts*

M109-38  
63  
102