

MINOR LAND PARTITION

A PORTION OF THE S.E. 1/4 OF SECTION 28, THE S.W. 1/4 OF SECTION 27, THE N.E. 1/4 OF SECTION 33 AND THE N.W. 1/4 OF SECTION 34 TOWNSHIP 21 SOUTH RANGE 12 W.W.M. DOUGLAS COUNTY OREGON

FOR
RAY HOLLIDAY
1800 RANCH ROAD
REEDSPORT, OR.
97467

FILED

DEC 29 1989

COUNTY SURVEYOR
DOUGLAS COUNTY, ORE

PREPARED BY-
KOOS ENGINEERING
2524 BROADWAY
NORTH BEND, OR.
97459

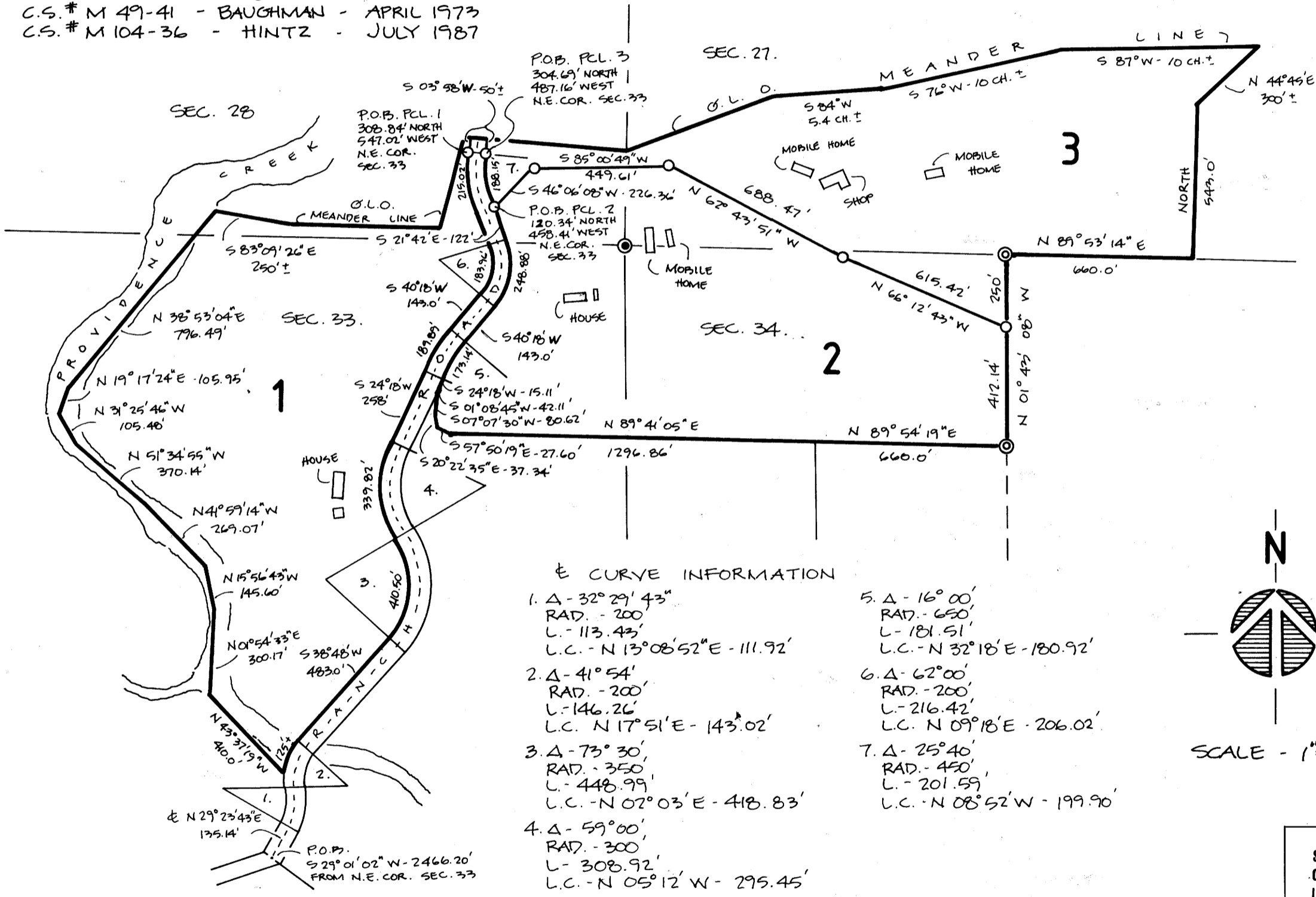
COUNTY SURVEYOR

NARRATIVE -

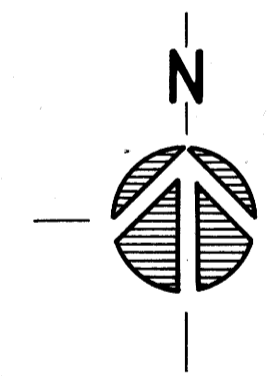
THE PURPOSE OF THIS SURVEY WAS TO MONUMENT THE DIVISION LINES CREATING THREE PARCELS IN THE MINOR LAND PARTITION SHOWN HEREON. BASIS OF BEARING WAS THE SECTION CORNER (27, 28, 33 & 34), AND THE 1/16 CORNER ON THE LINE BETWEEN SECTIONS 27 & 34. THESE MONUMENTS ALSO CONTROLLED THE POSITION OF THE MONUMENTS SET, WITH THE EXCEPTION OF THE MONUMENT SET ON THE EAST LINE OF THE N 1/2, N.W. 1/4, N.W. 1/4 OF SECTION 34. IT'S POSITION WAS CONTROLLED BY THE FOUND MONUMENTS DELINEATING THE SAID EAST LINE.

REFERENCE

- C.S. # M1-41 - BOYER - JAN. 1940
- C.S. # M49-41 - BAUGHMAN - APRIL 1973
- C.S. # M104-36 - HINTZ - JULY 1987



89-19923



SCALE - 1"=400'

REGISTERED
PROFESSIONAL
LAND SURVEYOR

J. Gregory Solay

OREGON
STATE BOARD OF
LAND SURVEYORS

PROFESSIONAL LAND SURVEYOR # 1331

APPROVALS

Colin G. Smart
REEDSPORT PLANNING DIRECTOR

Alexander R. Stephenson
REEDSPORT CITY ENGINEER

KE KOOS ENGINEERING
2524 BROADWAY
NORTH BEND, OREGON

STATE OF OREGON)
COUNTY OF DOUGLAS) SS.
I, GAY FIELDS, COUNTY CLERK AND RECORDER
OF CONVEYANCES, DO HEREBY CERTIFY THAT
THIS INSTRUMENT WAS RECORDED

1989 DEC 29 PM 1:09

GAY FIELDS
COUNTY CLERK

IN THE OFFICIAL RECORDS OF DOUGLAS COUNTY

BY *Carol Engel*
DEPUTY
FEE 10.00

COUNTY CLERK

MAP FILE M109-33