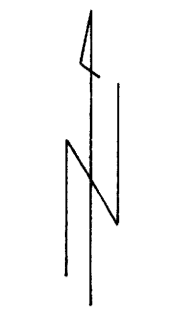


COUNTY SURVEYORS FILE DATA
DO NOT REMOVE FROM OFFICE

SI-601 W



SCALE 1"=400'
DATE 10/5/89

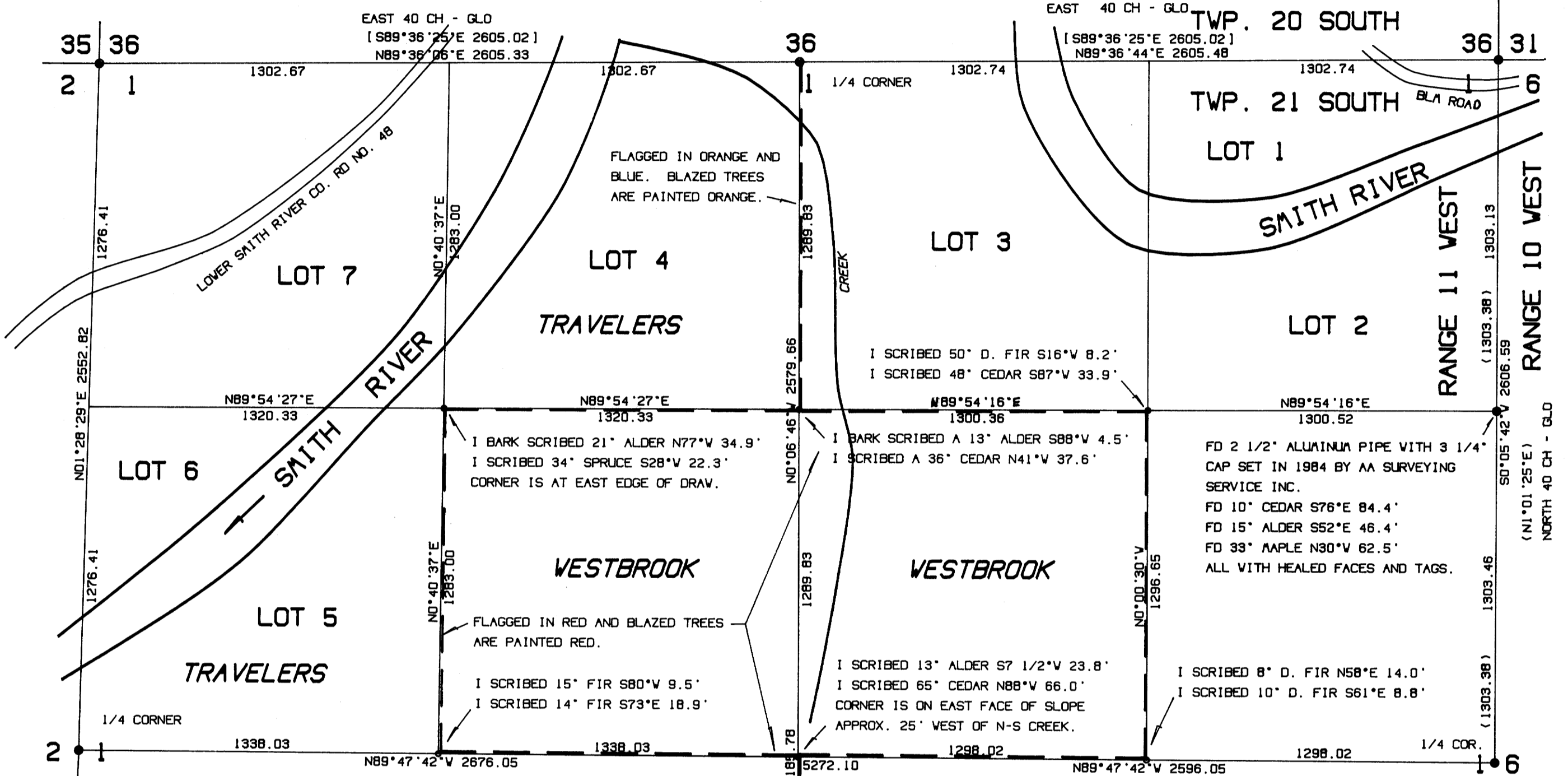
PROPERTY SURVEY LOCATED IN
SECTION 1, T.21S, R.11W.W.M.
DOUGLAS COUNTY, OREGON

FILED TF
NOV 21 1989 TF
COUNTY SURVEYOR
DOUGLAS COUNTY, ORE TF

FOUND 2" BCIP PROTRUDING FROM BEDROCK PER R. STUNTZNER SET IN 1980.
FD 12" D. FIR N44°V 12.9'
FD 11" D. FIR S24°V 3.4'
FD 17" D. FIR S49°E 7.5'
ALL TAGGED AND HEALED FACES.
FD 10" D. FIR WEST 12.2' WITH 'X' CHOP AND TAG.

FOUND 2" BCIP SET IN 1980 BY R. STUNTZNER
FD 26" D. FIR S52°E 18.3'
FD 45" MAPLE N65°V 14.7'
BOTH TREES ARE TAGGED AND HAVE HEALED FACES.

FD BCIP SET BY CO. SURVEYOR IN 1968.
FD 19" D. FIR N80E 83.6'
FD 33" MAPLE N14W 15.2'
FD 20" MAPLE S27V 11.2'
FD 34" FIR S77 1/2E 42.9'
CORNER ON STEEP S FACE 300' NORTH OF SAITH RIVER ROAD.
TREES ARE TAGGED AND HAVE HEALED FACES.



FD 1/2" IRON PIPE WITH ALUMINUM FIXTURE OF UNKNOWN ORIGIN.
FD 50" CEDAR S44 1/2°E 19.9' (1891 BT S43°E 22.4')
FD 33" CEDAR S81 1/2°V 44.7' WITH HEALED FACE.
BOTH WITH TAGS.

I SCRIBED 50" D. FIR S16°V 8.2'
I SCRIBED 48" CEDAR S87°V 33.9'

I BARK SCRIBED 21" ALDER N77°V 34.9'
I SCRIBED 34" SPRUCE S28°V 22.3'
CORNER IS AT EAST EDGE OF DRAW.

I SCRIBED 13" ALDER S7 1/2°V 23.8'
I SCRIBED 65" CEDAR N88°V 66.0'
CORNER IS ON EAST FACE OF SLOPE APPROX. 25' WEST OF N-S CREEK.

FD 2 1/2" ALUMINUM PIPE WITH 3 1/4" CAP SET IN 1984 BY AA SURVEYING SERVICE INC.
FD 10" CEDAR S76°E 84.4'
FD 15" ALDER S52°E 46.4'
FD 33" MAPLE N80°V 62.5'
ALL WITH HEALED FACES AND TAGS.

FD 2 1/2" ALUMINUM PIPE WITH 3 1/4" CAP. CORNER WAS SET IN 1984 BY AA SURVEYING SERVICE, INC.
FD 37" HEALDOCK N19°E 84.8'
FD 27" CEDAR N57°E 67.2'
FD 32" CEDAR N1°V 48.6'
ALL WITH HEALED FACES AND TAGS.

REGISTERED PROFESSIONAL LAND SURVEYOR
Harvey Wilcox
OREGON JULY 17, 1986 HARVEY WILCOX 2244

SURVEYED FOR:
WESTBROOK LAND AND TIABER
PO BOX 1094
COOS BAY, OREGON 97420

SURVEYED BY:
STUNTZNER ENGINEERING AND FORESTRY
PO BOX 118
COOS BAY, OR 97420

AND FOR:
THE TRAVELERS COMPANIES
570 LIBERTY, SUITE 200
SALEA, OR 97301

- LEGEND
- FOUND POINT AS NOTED
 - SET 3/4"x30" IRON ROD WITH 2" ALUMINUM CAP STAMPED STUNTZNER ENGINEERING, CORNER INFORMATION AND LS 2244.
 - LINE BLAZED, PAINTED AND FLAGGED.
 - () FROM AA SURVEYING MAP A97-76A
 - [] FROM R. STUNTZNER MAP DATED 7/24/80

BASIS OF BEARING
THE BASIS OF BEARING FOR THIS SURVEY IS BY SOLAR OBSERVATION ON THE NORTH LINE OF SECTION 1.

NARRATIVE
THE ORIGINAL SURVEY WAS DONE BY JOHN MELDRUM IN 1866. CORNERS HAVE BEEN PERPETUATED BY SEVERAL SURVEYORS AS NOTED AND MANY ORIGINAL BEARING TREES STILL EXIST.

FLAGGED IN ORANGE AND BLUE AND BLAZED TREES PAINTED ORANGE.

FD 3/4" IRON ROD WITH ALUMINUM CAP SET IN 1983 BY R. STUNTZNER.
FD 28" CEDAR S7°V 18.0'
FD 14" ALDER N52°E 24.4'
BOTH WITH FACES AND TAGS.
CORNER IS ON SOUTH SLOPE OF HILL.

NOTES:
THE SURVEY WAS MADE WITH A WILD T-1000 THEODOLITE AND EDA. ASSISTING WAS BRUCE WEBSTER, KEVIN HAMPTON, JERRY ESTABROOK, HARVEY WILCOX, L.S., LARRY HALL, L.S., & KARL ZEARFOSS. BEARING TREE DISTANCES ARE TO THE SIDE CENTER OF THE TREE.