

COUNTY SURVEYORS FILE DATA
DO NOT REMOVE FROM OFFICE

SURVEY IN
SOUTHEAST 1/4, SECTION 15, T 21 S, R 12 W, W.M.
DOUGLAS COUNTY, OREGON

FOR
INTERNATIONAL PAPER COMPANY

BY
PEEL BAKER LAND SURVEYING, INC

APRIL 5, 1989

FILED

MAY 24 1989

COUNTY SURVEYOR
DOUGLAS COUNTY, ORE.

NARRATIVE

THIS SURVEY WAS MADE IN JANUARY AND APRIL, 1989 BY DANIEL W. BAKER, OF PEEL BAKER LAND SURVEYING, INC., 1262 LAWRENCE STREET-SUITE 4 EUGENE, OREGON, 97401. THE PURPOSE OF THIS SURVEY WAS TO SET THE PROPERTY CORNERS BETWEEN INTERNATIONAL PAPER COMPANY AND DOROTHY WILSON IN ACCORDANCE TO AN AGREEMENT SIGNED BY MRS. WILSON ON AUGUST 30, 1988 IN SECTION 15, T 21 S, R 12 W, W.M. THIS SURVEY WAS MADE USING A KERN K-1 M THEODOLITE AND DM 502 E.D.M. CORNERS WERE SET FROM CONTROL POINTS ESTABLISHED IN A PREVIOUS SURVEY (M101-32) THE CORNERS SET IN THIS SURVEY ARE ADJUSTING THE DEEDED EAST LINE OF MRS. WILSON'S PROPERTY. THE DEED CALLS FOR THE EAST LINE TO BE THE NORTH-SOUTH CENTERLINE OF THE SOUTHEAST 1/4 (EAST LINE OF GOVERNMENT LOT 5, SECTION 15, T 21 S, R 12 W, W.M.). BECAUSE OF EXISTING BUILDINGS ALONG SAID LINE, IT WAS AGREED THAT THE LINE WOULD BE ADJUSTED. THE NORTH LINE WAS ALSO AN AGREEMENT LINE IN ACCORDANCE TO SAID AGREEMENT. THE CONTROLLING CORNERS WERE FOUND OR SET IN MY PREVIOUS SURVEY (M 101-32) AND WERE USED TO CONTROL THIS SURVEY. ALL CORNERS SET IN THIS SURVEY WERE MONUMENTED WITH 3/4 " X 42 " ALUMINUM RODS AND YELLOW PLASTIC CAPS, MARKED " D.W. BAKER PLS 1978 " UNLESS OTHERWISE NOTED. AN ORANGE MAGNETIC LOCATOR WAS SET AT THE BASE OF EACH MONUMENT AND AN ALUMINUM POST AND SIGN WAS PLACED ALONGSIDE EACH MONUMENT.

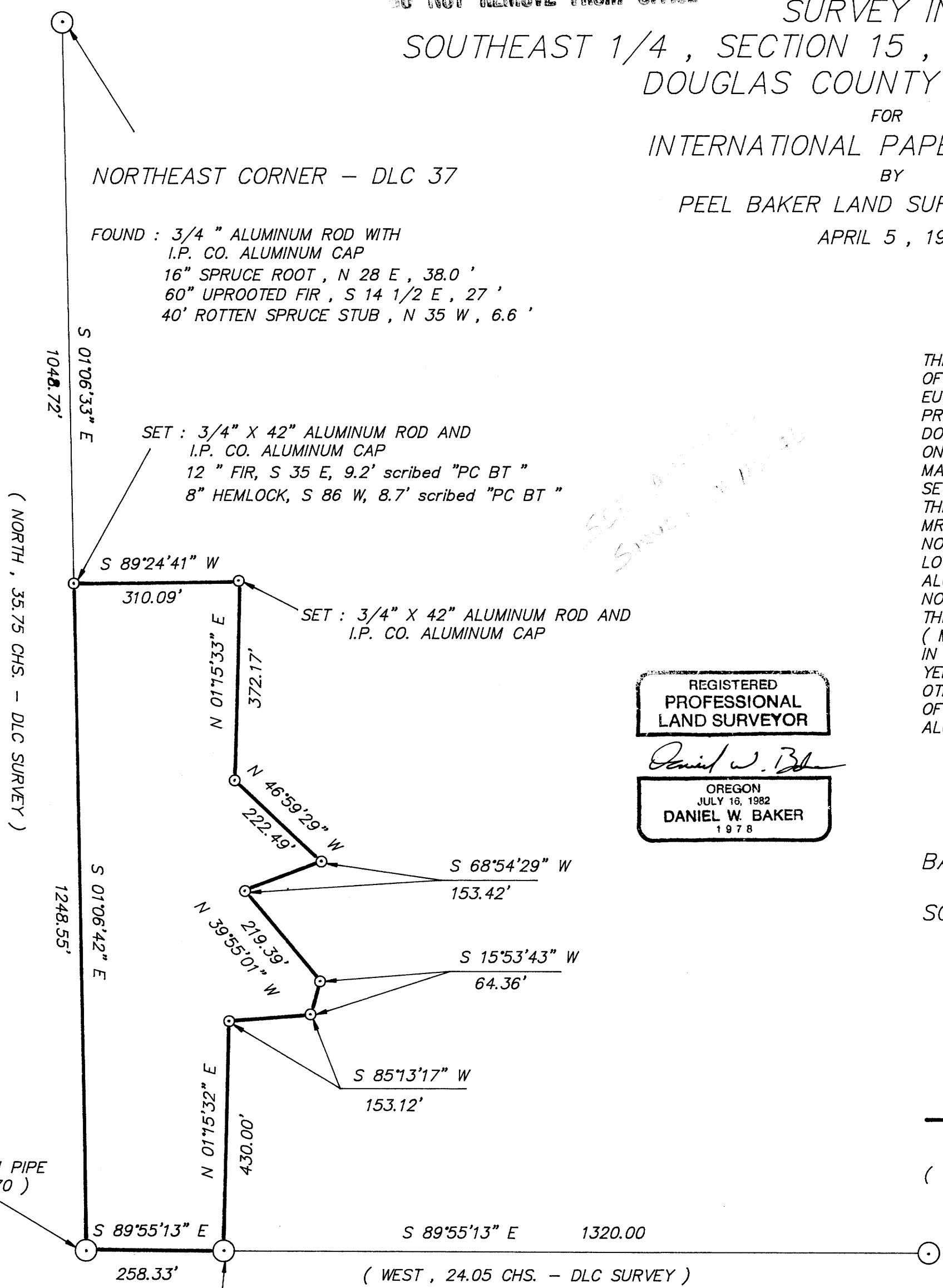
REGISTERED
PROFESSIONAL
LAND SURVEYOR

Daniel W. Baker
OREGON
JULY 16, 1982
DANIEL W. BAKER
1978

BASIS OF BEARING : SOLAR OBSERVATION (M101-32)

SCALE : 1 " = 200 '

- CORNERS FOUND
- CORNERS SET THIS SURVEY
- PROPERTY LINE
- () RECORD DATA (DEED OR SURVEY)



NORTHEAST CORNER - DLC 37

FOUND : 3/4 " ALUMINUM ROD WITH
I.P. CO. ALUMINUM CAP
16" SPRUCE ROOT, N 28 E, 38.0 '
60" UPROOTED FIR, S 14 1/2 E, 27 '
40' ROTTEN SPRUCE STUB, N 35 W, 6.6 '

SET : 3/4 " X 42" ALUMINUM ROD AND
I.P. CO. ALUMINUM CAP
12 " FIR, S 35 E, 9.2' scribed "PC BT "
8" HEMLOCK, S 86 W, 8.7' scribed "PC BT "

SET : 3/4 " X 42" ALUMINUM ROD AND
I.P. CO. ALUMINUM CAP

S 68°54'29" W
153.42'

S 15°53'43" W
64.36'

S 85°13'17" W
153.12'

FOUND : 3/4 " IRON PIPE
(CS 58-170)

EAST 1/16 CORNER 15 & 22

FOUND : 3/4 " ALUMINUM ROD WITH I.P. CO.
ALUMINUM CAP
64" FIR, N 38 E, 37.3 '
25" FIR, S 82 E, 23.4 '

SECTION CORNER 14, 15, 22, 23

FOUND : 2 1/2 " IRON PIPE WITH BRASS CAP & SCRIBED POST
45" SPRUCE, N 23 E, 46.2 '
7" ALDER, S 43 E, 9.2 '
30" FIR, S 47 1/2 W, 40.5 '
60" FIR STUMP, N 40 W, 35.0 '
34" FIR SNAG, N 26 W, 32.8 '