

SURVEY FOR LEASE DESCRIPTION AND ROAD EASEMENT IN THE N.E. 1/4, SECTION 28 AND S.E. 1/4, SECTION 21, T. 30S., R. 5W., W.M., DOUGLAS COUNTY, OREGON

COUNTY SURVEYORS FILE DATA
DO NOT REMOVE FROM OFFICE

FILED
COUNTY CLERK
DOUGLAS COUNTY, ORE.

SURVEYED FOR HARVEY DENNISON
SURVEYED BY ROBERT L. DOLAN
RT. 1, BOX 1820
SUTHERLIN, OR. 97479
DATE AUGUST 1989

SCALE 1" = 100'
Legend ○ FD. 5/8" IRON ROD OR AS NOTED
● SET 5/8" X 30" IRON ROD W/CAP

LEGAL DESCRIPTION

LEASE DESCRIPTION * 4A (ADJOINS LEASE DESCRIPTION * 4 FROM RM 3-64)
BEGINNING AT A 5/8" IRON ROD THAT BEARS S 48° 24' 16" W, 749.52 FT. AND S 53° 32' 36" W, 434.38 FT. AND S 69° 02' 42" W, 869.07 FT. FROM THE SECTION CORNER COMMON TO SECTIONS 21, 22, 27 AND 28, T. 30S., R. 5W., W.M., THENCE S 56° 06' 07" E, 217.33 FT. TO A 5/8" IRON ROD, THENCE S 41° 42' 39" W, 113.08 FT. TO A POINT, THENCE N 66° 01' 20" W, 216.49 FT. TO A POINT, THENCE N 23° 09' 14" E, 170.52 FT. TO A POINT, THENCE S 56° 06' 07" E, 43.72 FT. TO THE POINT OF BEGINNING.

A 50 FT. WIDE ROAD EASEMENT IN THE N.E. 1/4, SECTIONS 28 AND THE S.E. 1/4, SECTION 21 T. 30S., R. 5W., W.M. AND BEING DESCRIBED AS FOLLOWS:

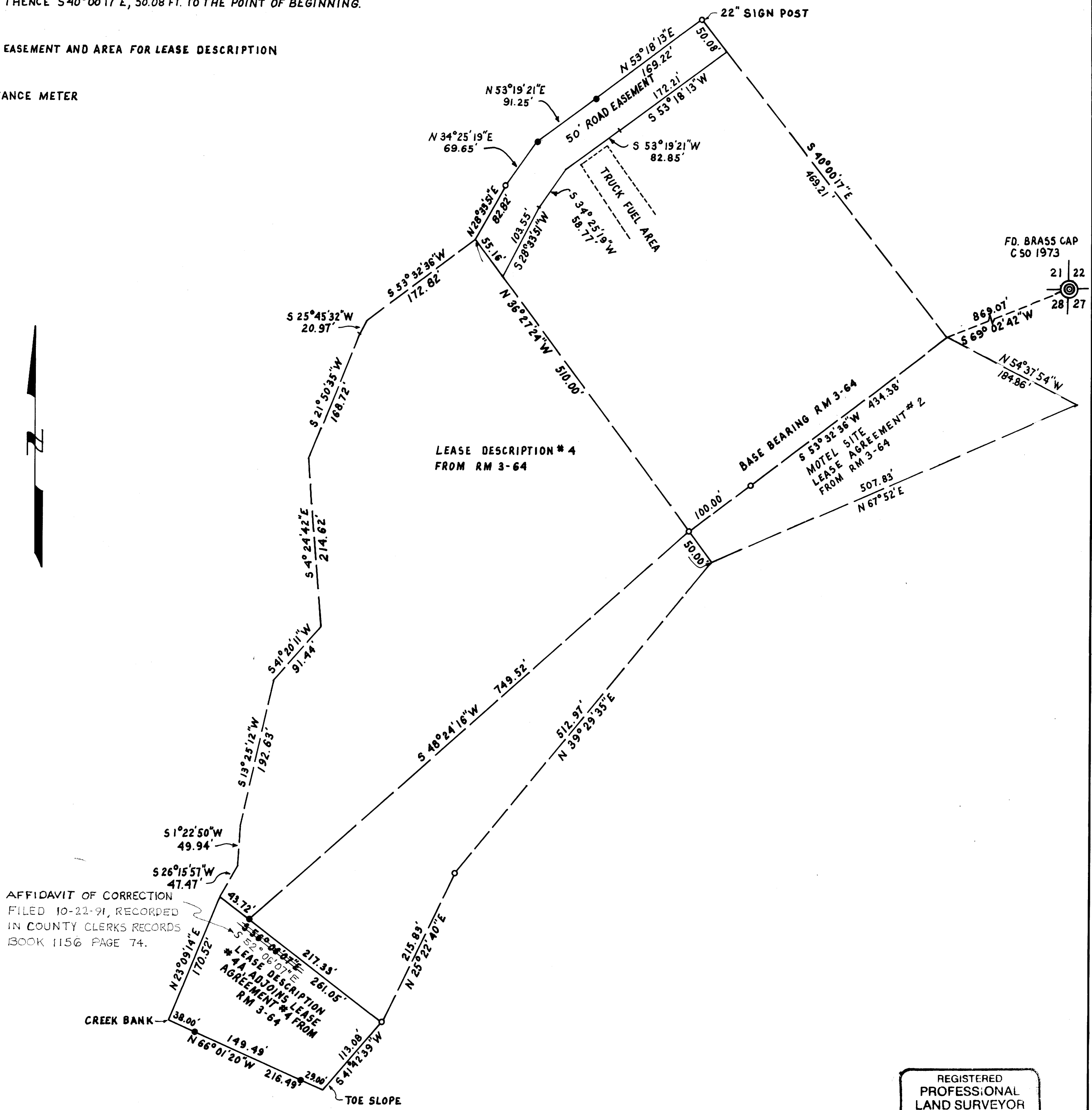
BEGINNING AT A POINT THAT BEARS N 40° 00' 17" W, 469.21 FT. AND S 69° 02' 42" W, 869.07 FT. FROM THE SECTION CORNER COMMON TO SECTIONS 21, 22, 27 AND 28, T. 30S., R. 5W., W.M.; THENCE S 53° 18' 13" W, 172.21 FT. TO A POINT, THENCE S 53° 19' 21" W, 82.85 FT. TO A POINT, THENCE S 34° 25' 19" W, 58.77 FT. TO A POINT, THENCE S 28° 33' 51" W, 103.55 FT. TO A POINT, THENCE N 36° 27' 24" W, 55.16 FT. TO A POINT, THENCE N 28° 33' 51" E, 82.82 FT. TO A 5/8" IRON ROD, THENCE N 34° 25' 19" E, 69.65 FT. TO A 5/8" IRON ROD, THENCE N 53° 19' 21" E, 91.25 FT. TO 5/8" IRON ROD, THENCE N 53° 18' 13" E, 169.22 FT. TO A 22" SIGN POST, THENCE S 40° 00' 17" E, 50.08 FT. TO THE POINT OF BEGINNING.

NARRATIVE

SURVEY FOR ROAD EASEMENT AND AREA FOR LEASE DESCRIPTION

INSTRUMENTS

THEODOLITE - DISTANCE METER



AFFIDAVIT OF CORRECTION
FILED 10-22-91, RECORDED
IN COUNTY CLERKS RECORDS
BOOK 1156 PAGE 74.

REGISTERED
PROFESSIONAL
LAND SURVEYOR
ROBERT L. DOLAN
OREGON
JULY 30, 1976
1078