

REFERENCES

(1) BLM RD EAMT RE-R-235, VOL 314, P 390-392, NO. 30925. (2) BLM RD EAMT RE-R-232, VOL 313, P 409-411, NO. 307346. (3) PLAT, D. HATHORN, 1856, T29S, R8W, WM, BLM. (4) CONTRACT, BK 528, P 762-763, CLERK REC NO. 73-12840, TL 2600. (5) T29S, R8W, DLC 42, CS, P 585-586. (6) WARRANTY D, VOL 226, P 313, NO. 165990. (7) VICTOR M. STANDLEY PROP DESCT BY ARTHUR BOYER. (8) JOHN STANDLEY RANCH PLAT BY A. BOYER, APR 1960, COMPILED FR D REC. (9) T29S, R8W, DLC 43, CS, P 587-588, J.A. BURNETT, 1856. (10) T29S, R8W, DLC 43, BLM, HANDWRITTEN NOTES, BURNETT, 1856. (11) T29S, R8W, DLC 44, CS, P 588-589, BURNETT, 1856. (12) T29S, R8W, BLM RESUR, S30/S31/CC ON DLC 44 E BDY, DONALD R. BECK, JUL 1965, CS, 13886. (13) T29S, R8W, NO. 92 COR REN, SE COR DLC 43, CS, JAMES W. BYRON, 1958. (14) LOT 1, S30, T29S, R8W, CS NO. 17, MAR 1901, V 2, P 106. (15) MAP 29 8 29, DOUGLAS CO. (16) MAP 29 8 30, DOUGLAS CO. (17) T29S, R8W, S30, TL 1800. (18) SUR NO. 2 FOR J. B. STOBIE BY COLE, APR 1923, V 3, P 149. (19) PLAT & INSTR, LI BET S30 & 931, T29S, R8W, DONALD R. BECK, JUL 1965, BLM. (20) POR OF PLAT DLC 44 & 43, T29S, R8W, 1863, BLM. (21) AERIAL PHOTOS, BLM 12, O-83-ARC, 10-5-18 & 10-5-19, 5-19-83. (22) D, VOL 293, P 223, NO. 277266.

ABBREVIATIONS

AS FOUND IN "BOUNDARY CONTROL AND LEGAL PRINCIPLES" CURTIS M. BROWN, 2ND ED, P 25-27. OTHER COMMON ABBR NOT LISTED.

B - BEARS(ING)	NM - NOT MONUMENTED
BC - BRASS CAP	PREV - PREVIOUS(LY)
BS - BACKSIGHT	RET - RETURN(ED)
CC - CLOSING COR	T/R - TESTED & REJECTED
FS - FORESIGHT	TRAV - TRAVERSE
LOC - LOCATION	WIT - WITNESS

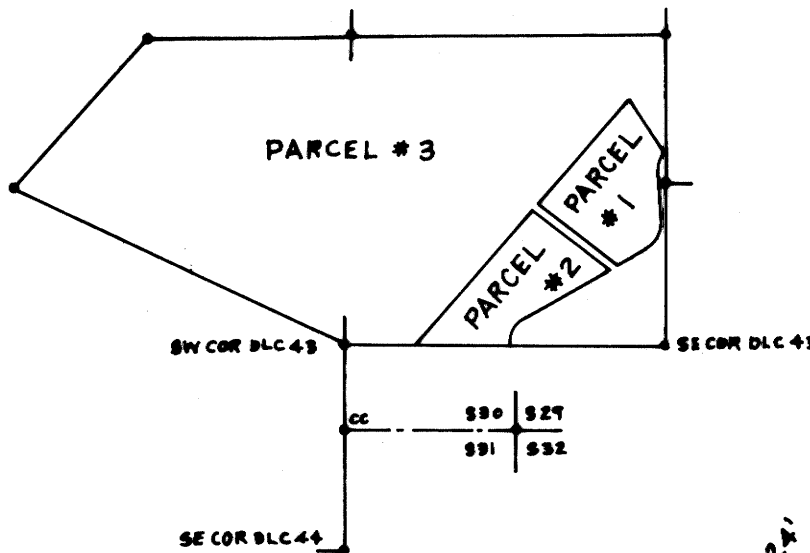
ZONE	SEWER	WATER	NOTE
FG	DRAINFIELD ON EA PARCEL	WELL ON EA PARCEL	PARCELS #1 & #2 SUBJECT TO RESOURCE MGMT EAMT INST. #89-13403

OWNER & PARTITIONER

VICTOR M. STANDLEY
P.O. BOX 161
CAMAS VALLEY
OR 97416

LEGEND

○ SET #105 = SET FOR COR
A 3/4"x48" GALV STEEL
PIPE WITH ALUMINUM
CAP STAMPED "#105
GEORGE E. LANEY
LS1623."
○ NM = COR
NOT MONU-
MENTED.



SURVEYOR

GEORGE E. LANEY
1621 DENN RD
CAMAS VALLEY
OR 97416

FILED

OCT 10 1989

COUNTY SURVEYOR
DOUGLAS COUNTY, ORE

PARCEL # 1

7.14 ACRES ±

PARCEL # 2

6.90 ACRES ±

REGISTERED
PROFESSIONAL
LAND SURVEYOR

George E. Laney
OREGON
JULY 14, 1978
GEORGE E. LANEY
1623

DWN: GEL

SCALE: 1" = 100'

SUR JUN-AUG 1989

A MAJOR LAND PARTITION FOR
VICTOR M. STANDLEY
IN THE S 1/2, SEC 30 & SW 1/4, SEC 29,
T29S, R8W, WM, DOUGLAS COUNTY, OREGON

APPROVALS:

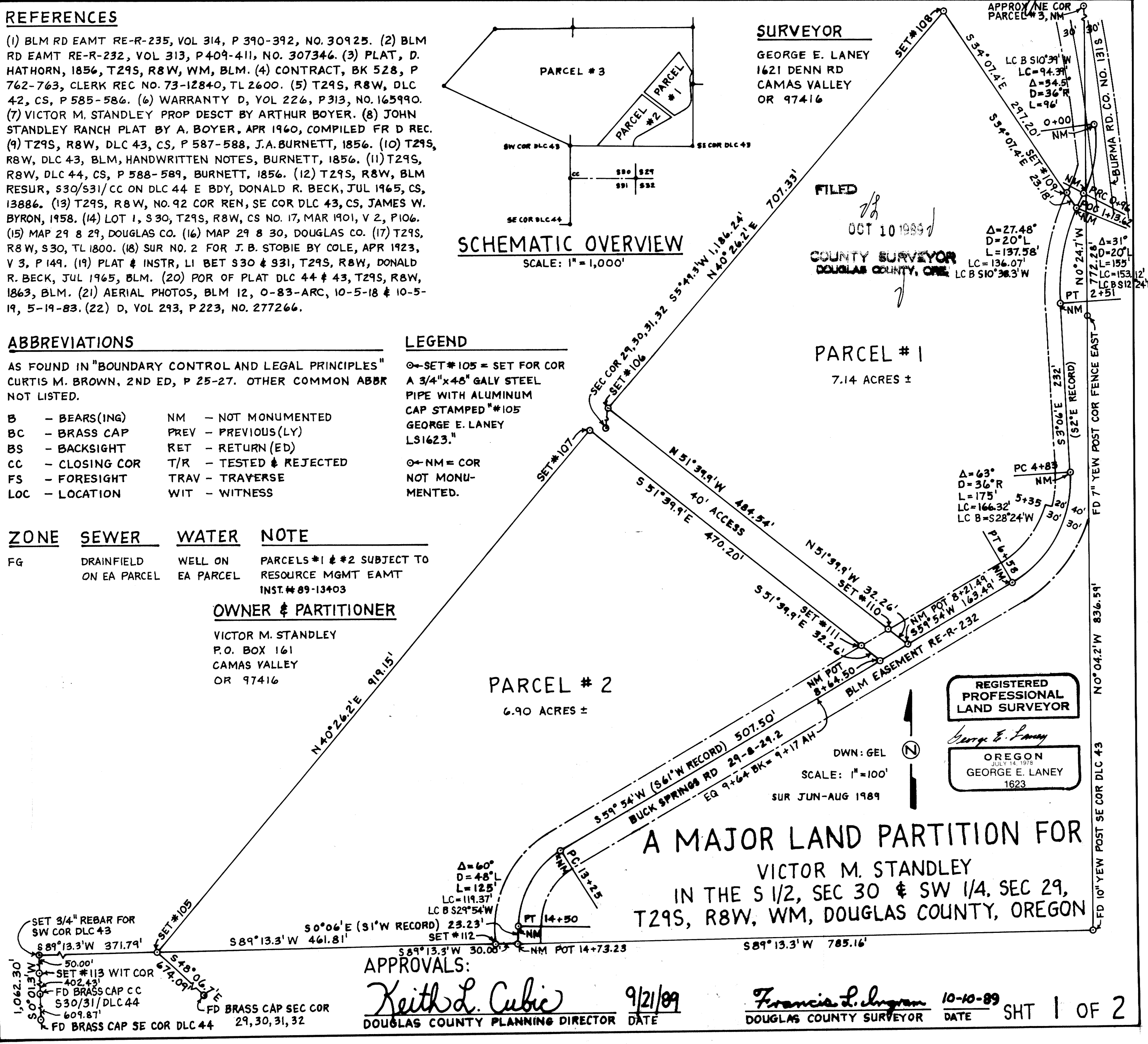
Keith L. Cubic
DOUGLAS COUNTY PLANNING DIRECTOR

9/21/89
DATE

Francis L. Ingram
DOUGLAS COUNTY SURVEYOR

10-10-89
DATE

SHT 1 OF 2



MAP FILE #1108-72-A