

COUNTY SURVEYORS FILE DATA

DO NOT REMOVE FROM OFFICE

SURVEY TO SET PROPERTY CORNERS

IN THE N.W. 1/4 OF THE N.E. 1/4 OF SEC. 13, T.27 S., R.6 W., W.M.
SEPTEMBER 1989 SCALE 1" = 20'

SURVEYED FOR:
BAILEY VETERINARY CLINIC
248 NW GARDEN VALLEY BLVD.
ROSEBURG, OR 97470

SURVEYED BY:
BAUGHMAN TECHNICAL SERVICES INC.
P.O. BOX 222
ROSEBURG, OR 97470

FILED

SEP 29 1989

COUNTY SURVEYOR
DOUGLAS COUNTY, ORE.

NARRATIVE:

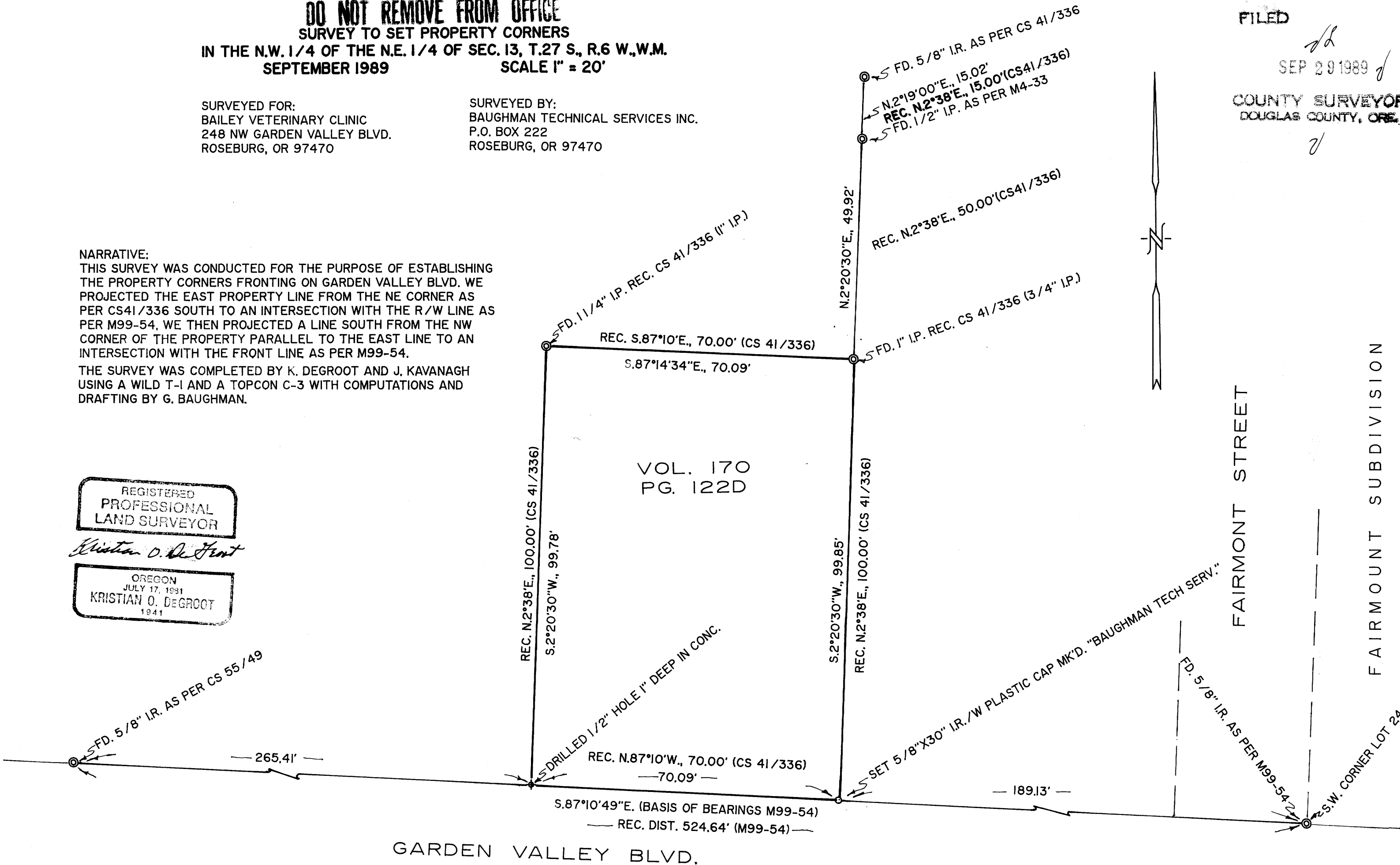
THIS SURVEY WAS CONDUCTED FOR THE PURPOSE OF ESTABLISHING THE PROPERTY CORNERS FRONTING ON GARDEN VALLEY BLVD. WE PROJECTED THE EAST PROPERTY LINE FROM THE NE CORNER AS PER CS41/336 SOUTH TO AN INTERSECTION WITH THE R/W LINE AS PER M99-54. WE THEN PROJECTED A LINE SOUTH FROM THE NW CORNER OF THE PROPERTY PARALLEL TO THE EAST LINE TO AN INTERSECTION WITH THE FRONT LINE AS PER M99-54.

THE SURVEY WAS COMPLETED BY K. DEGROOT AND J. KAVANAGH USING A WILD T-1 AND A TOPCON C-3 WITH COMPUTATIONS AND DRAFTING BY G. BAUGHMAN.

REGISTERED
PROFESSIONAL
LAND SURVEYOR

Kristian O. DeGroot

OREGON
JULY 17, 1991
KRISTIAN O. DEGROOT
1941



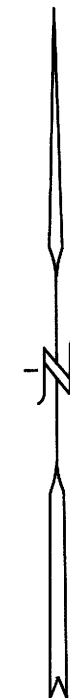
GARDEN VALLEY BLVD.

FAIRMONT STREET

FAIRMONT SUBDIVISION

S.W. CORNER LOT 24

VOL. 170
PG. 122D



MAP FILE M108-70

MAP FILE M108-70