

MAP

COUNTY SURVEYORS FILE DATA
DO NOT REMOVE FROM OFFICE

FILED
SEP 27 1989
COUNTY SURVEYOR
DOUGLAS COUNTY, ORE.

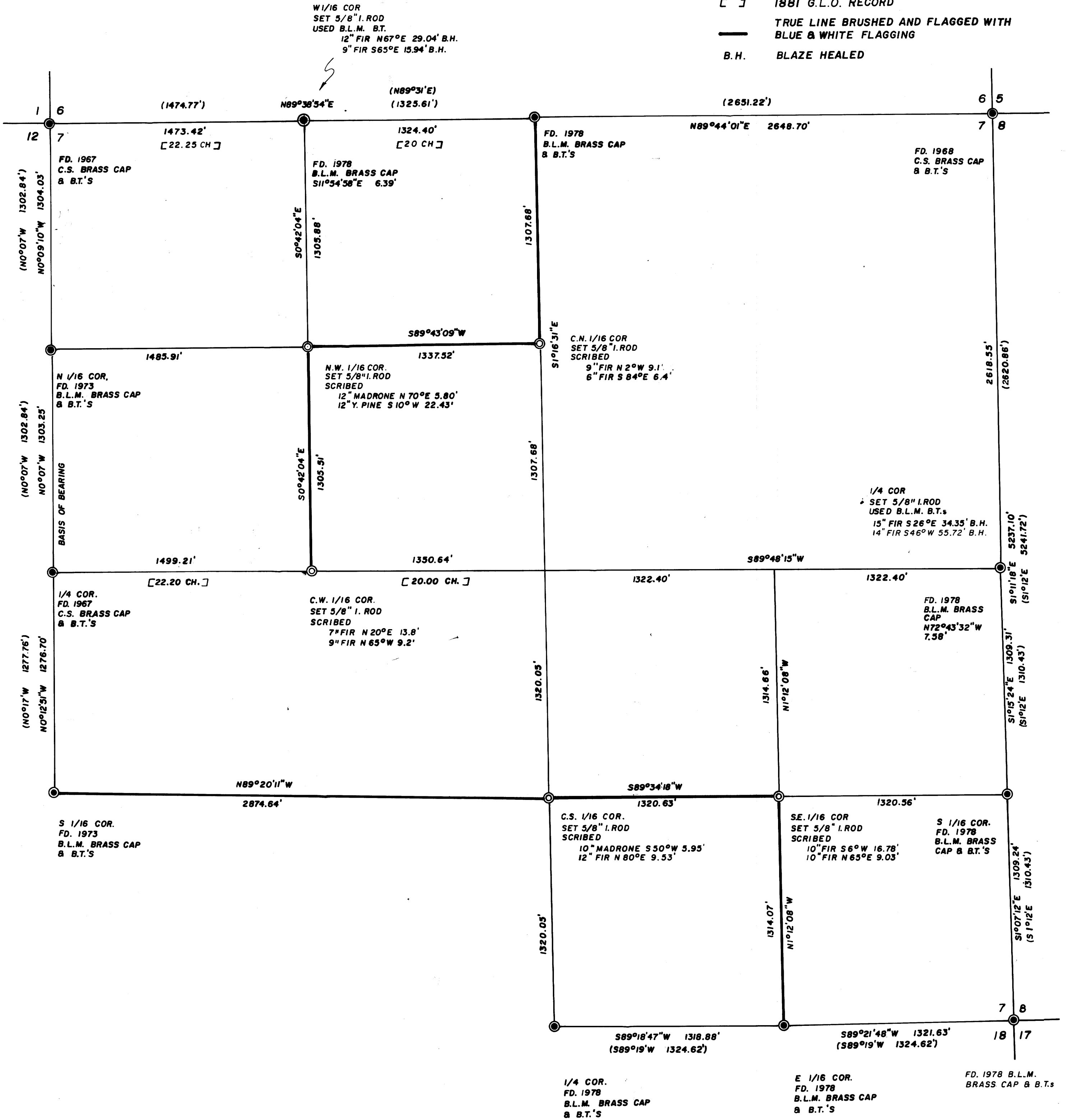
SHOWING A SURVEY IN SECTION 7, T. 32 S., R. 7 W.,
W.M., DOUGLAS COUNTY, OREGON
AUGUST 30, 1989

SCALE: 1"=400'

SURVEYED FOR:
GREGORY FOREST PRODUCTS
P.O. BOX "C"
GLENDALE, OREGON

SURVEYED BY:
MAX H. HULL, SURVEYING
231 NW "B" STREET
GRANTS PASS, OREGON

- ⊙ SET 5/8" X 30" IRON ROD WITH YELLOW PLASTIC CAP MARKED "HULL RS 901"
- FOUND IRON MONUMENT AS NOTED
- SURVEY NARRATIVE SEPARATE DOCUMENT
- BASIS OF BEARING IS THE B.L.M. BEARING OF THE WEST LINE OF THE SW 1/4 OF THE NW 1/2
- () 1973 & 1978 B.L.M. RECORD BEARING & DISTANCE
- [] 1881 G.L.O. RECORD
- TRUE LINE BRUSHED AND FLAGGED WITH BLUE & WHITE FLAGGING
- B.H. BLAZE HEALED



REGISTERED
PROFESSIONAL
LAND SURVEYOR
Max H. Hull
MAX H. HULL
901
63/24



M 108-69

Office 476-2425

MAX H. HULL Land Surveying

231 N. W. 'B' Street Grants Pass, Oregon 97526

SURVEY NARRATIVE to comply with Paragraph 209.250, O.R.S.

FILED

jh

DATE: August 30, 1989

SEP 27 1989 *✓*

FOR: Gregory Forest Products
P.O. Box "C"
Glendale, Oregon

**COUNTY SURVEYOR
DOUGLAS COUNTY, ORE.**

PURPOSE: To survey and mark boundary lines on property located in Section 7, Township 32 South, Range 7 West, Willamette Meridian, Douglas County, Oregon.

PROCEDURE: Beginning at the South 1/4 Corner at which point I found a 1978 B.L.M. brass cap from which I found

A Live Oak 10" in diam. North $55\ 1/2^\circ$ West 44.88 feet blaze healed

A Fir 15" in diam. South $7\ 1/4^\circ$ East 26.4 feet blaze healed

Thence I surveyed to the East 1/16 Corner at which point I found a 1978 B.L.M. brass cap from which I found

A Fir 7" in diam. North $49\ 1/2^\circ$ East 14.52 feet blaze healed

A Fir 8" in diam. South $74\ 1/2^\circ$ West 9.24 feet blaze healed

Thence I surveyed to the Southeast Section Corner at which point I found a 1978 B.L.M. brass cap from which I found

A Fir 11" in diam. North $32\ 1/2^\circ$ East 31.68 feet blaze healed

A Fir 18" in diam. South 34° East 35.97 feet blaze healed

A Fir 20" in diam. South 59° West 61.71 feet blaze healed

A Fir 9" in diam. North $56\ 1/2^\circ$ West 16.83 blaze healed

Thence I surveyed to the South 1/16 Corner at which point I found a 1978 B.L.M. brass cap from which I found

A Fir 8" in diam. North $28\ 1/2^\circ$ East 27.72 feet blaze healed

A Fir 8" in diam. South $84\ 1/2^\circ$ West 73.92 feet blaze healed

C.S. File No. 63/24-8A



MAX H. HULL Land Surveying

FILED

df
SEP 27 1989

Office 476-2425

231 N. W. ~~County~~ **Grants Pass, Oregon 97526**
COUNTY SURVEYOR
DOUGLAS COUNTY, ORE.

Thence I surveyed to the East 1/4 Corner at which I found a 1978 B.L.M. brass cap North $72^{\circ} 43' 32''$ West 7.58 feet from true position; Thence I surveyed to the Northeast Section Corner at which point I found a 1968 County Surveyor brass cap from which I found

- A S. Pine 25" in diam. North 68° East 21.1 feet blaze healed
- A S. Pine 24" in diam. South 15° West 6.6 feet blaze healed
- A S. Pine 30" in diam. South 52° East 17.2 feet blaze healed
- A Laurel 24" in diam. North 62° West 25.1 feet blaze healed

Thence I calculated and set said East 1/4 corner in its correct position as shown on the map; thence from the Northeast section Corner I surveyed to the North 1/4 Corner at which point I found a 1978 B.L.M. brass cap from which I found

- A Fir 10" in diam. North 60° East 21.12 feet blaze healed
- A Fir 10" in diam. South $59 1/2^{\circ}$ West 15.18 feet blaze healed

Thence I surveyed to the West 1/16 Corner at which point I found a 1978 B.L.M. brass cap South $11^{\circ} 54' 58''$ East 6.39 feet from true position; Thence I surveyed to the Northwest Section Corner at which point I found a 1967 County Surveyor brass cap from which I found

- A Laurel 13" in diam. South 41° East 4.4 feet Blaze healed
- A Fir 15" in diam. South 42° West 19.5 feet blaze healed
- A Fir 13" in diam. North 56° West 14.0 feet blaze healed
- A Fir 15" in diam. North 64° East 38.0 feet blaze healed



MAX H. HULL Land Surveying

FILED

zh

Office 476-2425

SEP 27 1989

231 N. W. 'B' Street Grants, Pass, Oregon 97526
COUNTY SURVEYOR
DOUGLAS COUNTY, ORE.

Thence I calculated and set the West 1/16 Corner in its correct location as shown on the map; Thence I Surveyed to the North 1/16 Corner at which point I found a 1973 B.L.M. brass cap from which I found

A Y. Pine 22" in diam. South 77 1/2° East 4.29 feet
blaze healed

A Y. Pine 19" in diam. South 49 1/2° West 6.93 feet
blaze healed

Thence I surveyed to the West 1/4 Corner at which point I found

A Y. Pine 50" in diam. South 4° West 67.3 feet blaze
healed

A Y. Pine 10" in diam. North 45° East 18.6 feet blaze
healed

Thence I surveyed to the South 1/16 Corner at which point I found a 1973 B.L.M. brass cap from which I found

A Fir 15" in diam South 71 3/4° East 77.88 feet blaze
healed

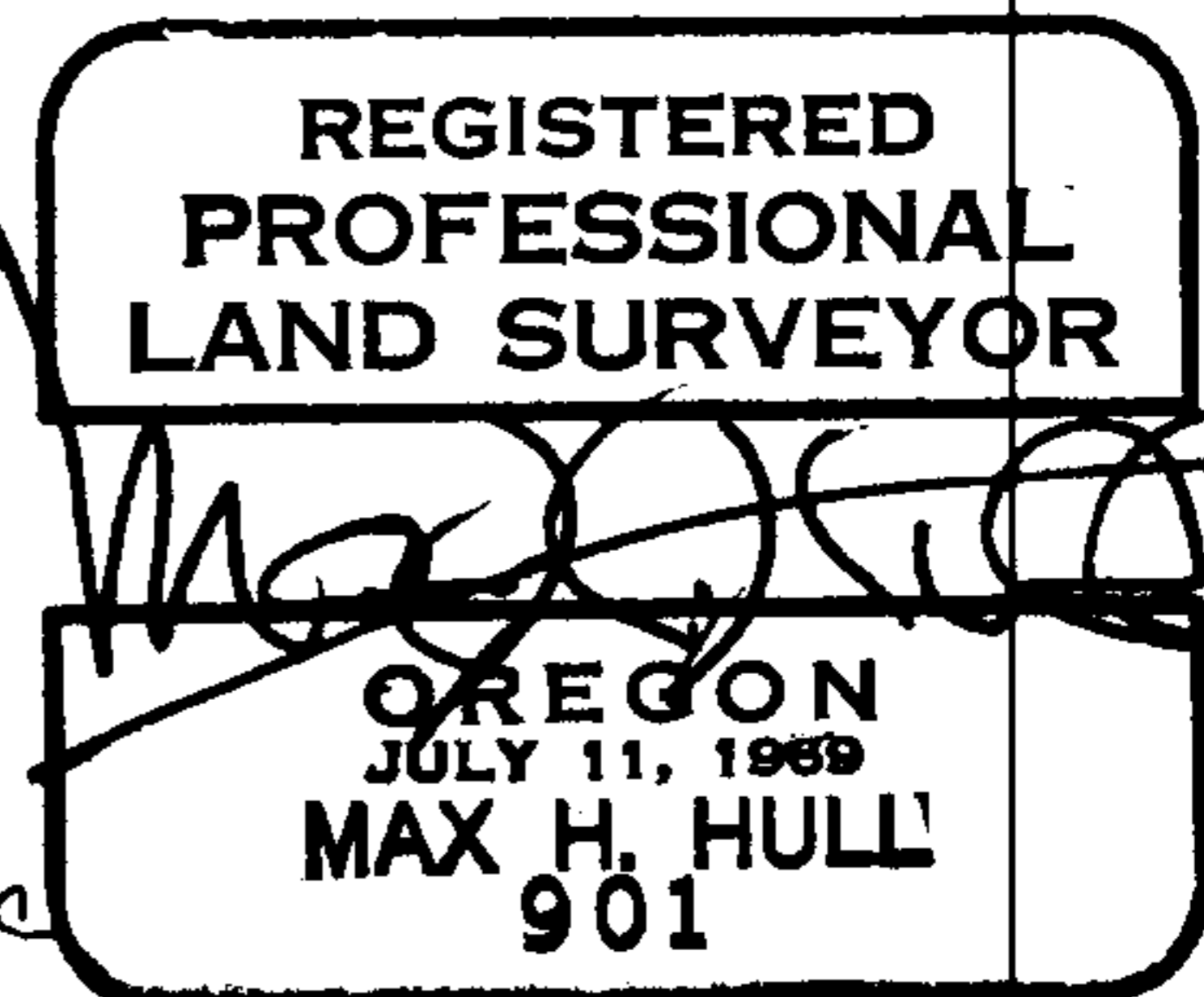
A Fir 14" in diam North 6 1/4° West 44.88 feet blaze
healed

None of the 1973 and 1978 B.L.M. Corners Set by proportion fit exactly but all except the East 1/4 Corner and West 1/16 Corner were deemed to be within acceptable tolerance; Thence I computed the Subdivision of the Section as shown on the map; Thence I surveyed true Line Setting 1/16 Corners as indicated.

The Survey was conducted with a Nikon NTD-4 Manual Station.

Survey Map is a Seperate Document.

Basis of bearing is the 1973 B.L.M. Survey of the West Line of the Southwest 1/4, Northwest 1/4.



C.S. File No. 63/24-80