

**COUNTY SURVEYORS FILE DATA  
DO NOT REMOVE FROM OFFICE**

M108-58

SURVEY NARRATIVE TO COMPLY WITH 209.250 OREGON REVISED STATUTES

**LEGEND**

- OSBF P/C = OREGON STATE BOARD OF FORESTRY 1 1/2" X 3/8" GALVANIZED IRON PIPE WITH 3" BRONZE CAP
- = MONUMENT FOUND
- WPCP = WHITE PAINTED CEDAR POST
- YMLP = YELLOW METAL LOCATION POSTER
- BTT = BEARING TREE TAG
- BT = BEARING TREE
- IG = IN GROUND
- ← (TB) = TRUE BLAZED AND POSTED
- CBM = ORANGE CARSONITE BOUNDARY MARKER, CBM-250R
- X = CARSONITE BOUNDARY MARKER AND STATION
- #2 ( ) = RECORD BEARING AND DISTANCES (ARNOLD G. GIBSON, 1973)

REGISTERED PROFESSIONAL LAND SURVEYOR  
DOUGLAS COUNTY, OREGON

**BASIS OF BEARING**

ARNOLD G. GIBSON 1973 E & W CENTER LINE SEC 17

**PURPOSE**

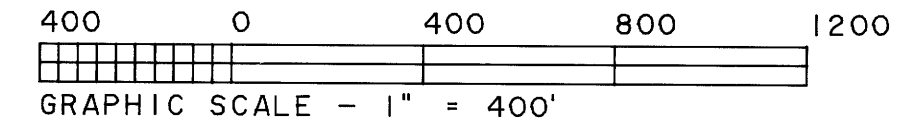
TO SEPERATE STATE FOREST LANDS AND PRIVATE LANDS LOCATED IN SECTION 17, TOWNSHIP 22 SOUTH, RANGE 11 WEST, WILLAMETTE MERIDIAN

**PROCEDURE**

A RANDOM TRAVERSE WAS RUN BETWEEN FOUND CORNERS. BEARINGS AND DISTANCES WERE COMPUTED AND OFFSETS CALCULATED TO POINTS ON TRUE LINE.

SURVEY FOR:  
STATE OF OREGON - DEPARTMENT OF FORESTRY  
**SECTION 17, T.22S., R.11W., W.M.**

DOUGLAS COUNTY, OREGON  
THEODOLITE AND EDM SURVEY BY: TIM VAN VLEET  
AND ERIC URSTADT  
DRAWN BY: LLOYD D. SMITH  
AUGUST 15, 1989



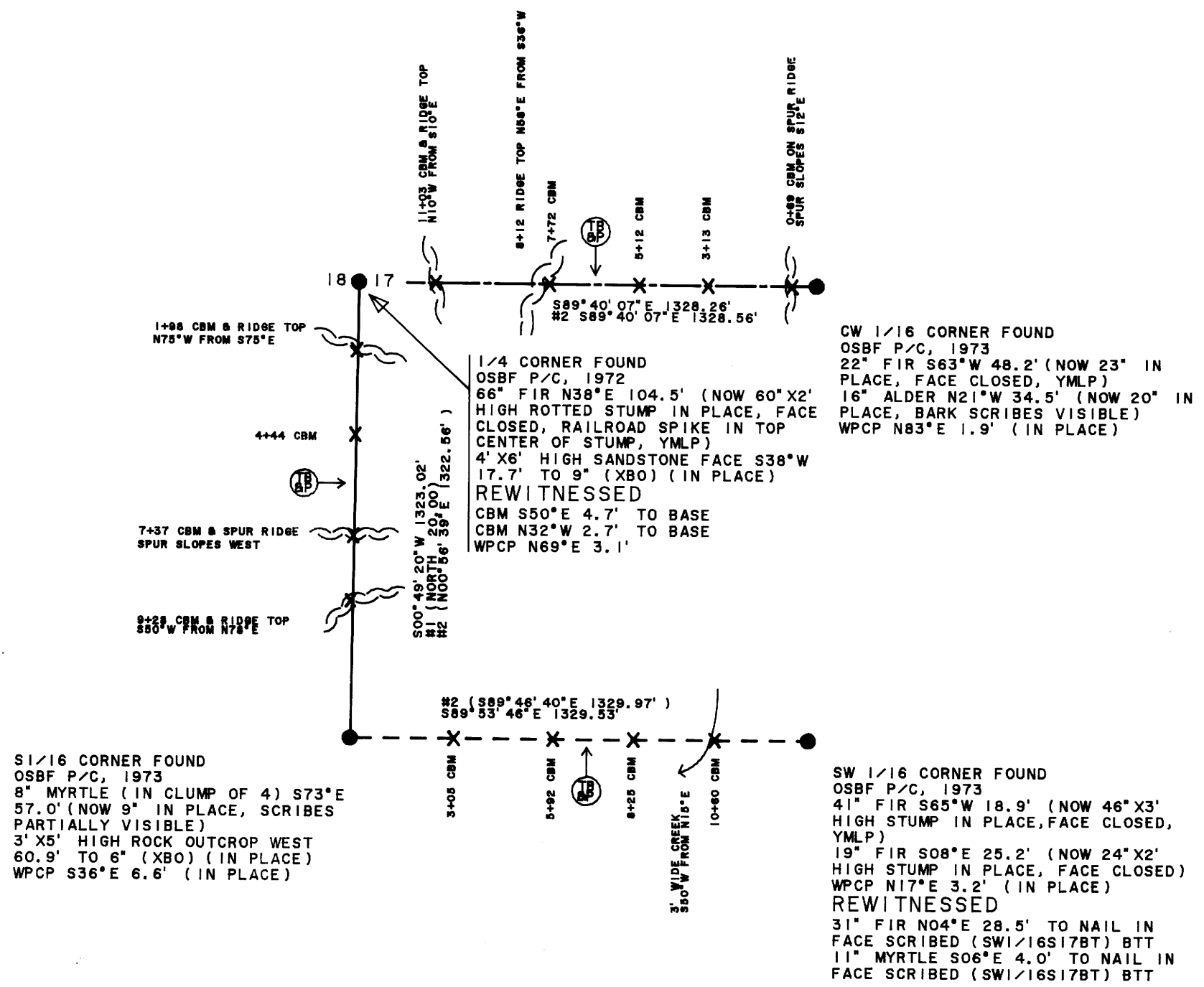
SURVEYED BY:

REGISTERED  
PROFESSIONAL  
LAND SURVEYOR

*Lloyd D. Smith*

OREGON  
JULY 22, 1977  
LLOYD D. SMITH  
1101

LLOYD D. SMITH  
300 5TH ST., BAY PARK  
COOS BAY, OREGON



M108-58