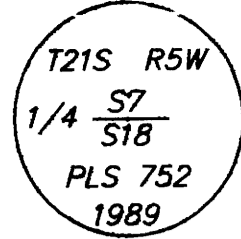


SECTION CORNER 7,12,13,18

FND 1-1/4" IRON PIPE WITH DOUGLAS COUNTY BRASS CAP DATED 1961
 8" CHINQUAPIN, N78-1/2E, 19.9' - VISIBLE SCRIBING
 24" FIR STUMP, S65-1/4E, 9.3' - VISIBLE SCRIBING
 24" FIR, S18-1/2E, 46.9' - CLOSED FACE
 37" FIR STUMP, S65-3/4W, 30.1' - CLOSED FACE
 28" FIR STUMP, N89W, 42.2' - CLOSED FACE

1/4 CORNER 7 & 18

SET 2" X 42" IRON PIPE WITH BRASS CAP
 11" HEMLOCK, N18E, 5.9' - SCRIBED "1/4S7BT"
 27" HEMLOCK, S9E, 21.6' - SCRIBED "1/4S18BT"
 SET 6' STEEL FENCE POST 1' WEST
 NOTE: 1" ALUMINUM PIPE BEARS N81°26'52"W, 29.17'
 SEE C.S. FILE NO.62/63



SECTION CORNER 7,8,17,18

FND W. HAINES "T" IRON
 37" FIR, N28W, 48.8'
 NOTE: SEE C.S. FILE NO. 49 / 29

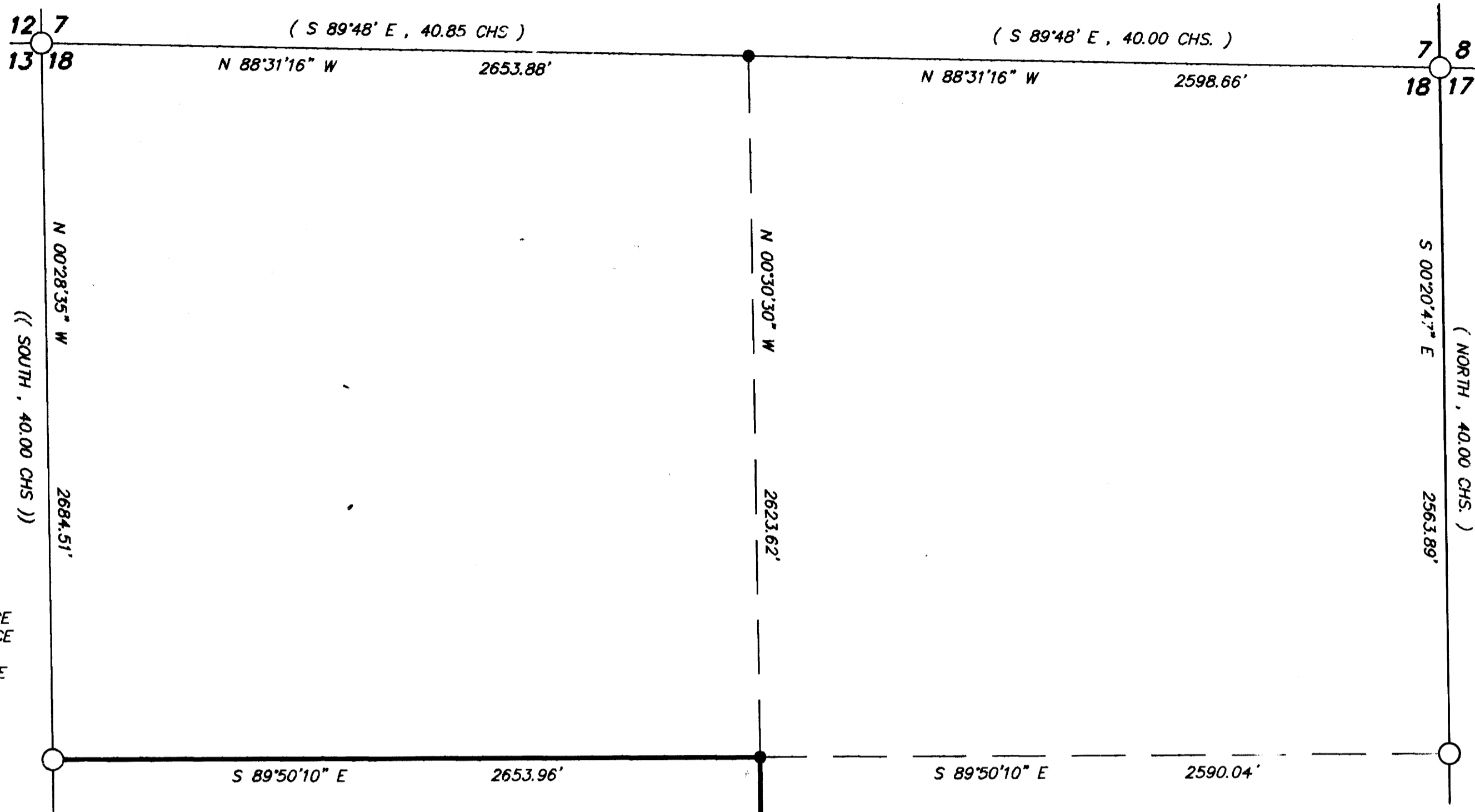
FILED
 AUG 29 1989
 COUNTY SURVEYOR
 DOUGLAS COUNTY, ORE.

1/4 CORNER 13 & 18

FND 1-1/4" IRON PIPE WITH DOUGLAS COUNTY BRASS CAP DATED 1962
 14" FIR, S21-1/4E, 52.7' - CLOSED FACE
 36" FIR, S17-1/4E, 30.6' - CLOSED FACE
 48" FIR, S18W, 21.5' - CLOSED FACE
 9" FIR, N72-1/4W, 19.5' - CLOSED FACE

1/4 CORNER 17 & 18

FND 1-1/4" IRON PIPE WITH DOUGLAS COUNTY BRASS CAP DATED 1962
 22" CEDAR, N83-1/4E, 24.4' - CLOSED FACE
 23" FIR, N23-1/2W, 8.8' - CLOSED FACE

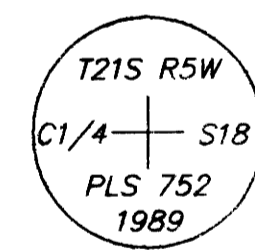


- NARRATIVE -

THIS SURVEY WAS MADE IN JUNE AND JULY, 1989 BY DONALD L. PEEL OF PEEL BAKER LAND SURVEYING INC., 1262 LAWRENCE ST. - SUITE 4, EUGENE, OREGON. THE PURPOSE OF THIS SURVEY WAS TO SET AND REFERENCE THE CENTER 1/4 CORNER AND TO LOCATE AND MARK THE NORTH AND EAST LINES OF THE SW 1/4 OF SECTION 18, T21S, R5W, W.M.. A WILD T1000 THEOMAT AND DISS E.D.M. WERE USED TO PERFORM THIS SURVEY. CLOSED RANDOM TRAVERSES WERE RUN BETWEEN FOUND CORNERS FOR CONTROL. BEARINGS WERE BASED ON A SOLAR OBSERVATION. A CLOSED RANDOM TRAVERSE WAS RUN AS NEAR AS POSSIBLE TO THE LINES THAT WERE TO BE MARKED. OFFSETS FROM THE RANDOM TRAVERSE LINE TO THE TRUE PROPERTY LINE WERE CALCULATED AND USED TO DETERMINE THE POSITION OF THE TRUE LINE. THE TRUE PROPERTY LINE WAS MARKED IN THE FIELD BY BLAZING TREES (TREES NOTCHED AND PAINTED RED) ON BOTH SIDES OF THE TRUE LINE. THE NORTHWEST AND NORTHEAST SECTION CORNERS AND THE EAST, WEST AND SOUTH 1/4 CORNERS WERE ALL FOUND AND USED FOR CONTROL. IN COLLABORATION WITH PERSONNEL FROM THE DOUGLAS COUNTY SURVEYORS OFFICE, IT WAS DETERMINED THAT THERE WAS INSUFFICIENT EVIDENCE OF THE ORIGINAL NORTH 1/4 CORNER SO I SET SAID CORNER BY SINGLE PROPORTION. THE CENTER 1/4 CORNER WAS SET AT THE POINT OF INTERSECTION OF THE NORTH-SOUTH AND EAST-WEST CENTERLINES. BOTH CORNERS SET IN THIS SURVEY WERE MONUMENTED WITH 2" X 42" IRON PIPES WITH BRASS CAPS MARKED AS SHOWN ON THIS PLAT. FOR ALL BEARING TREES MARKED IN THIS SURVEY, THE DISTANCE WAS MEASURED FROM THE CORNER TO A "W" NAIL IN THE LOWER BLAZE AND THE BEARINGS WERE MAGNETIC, VARIATION 20'.

CENTER 1/4 CORNER SECTION 18

SET 2" X 42" IRON PIPE WITH BRASS CAP
 9" ALDER, N33-1/2E, 3.7' - BARK SCRIBED "C1/4S18BT"
 11" FIR, N28-1/2W, 23.8' - SCRIBED "C1/4S18BT"
 SET 6' STEEL FENCE POST 1' WEST



BASIS OF BEARING: SOLAR OBSERVATION

SCALE: 1" = 400'

- CORNERS FOUND
- CORNERS SET THIS SURVEY
- PROPERTY LINE BLAZED
- () DATA OF RECORD (G.L.O. 1884)
- (()) DATA OF RECORD (G.L.O. 1855)

REGISTERED PROFESSIONAL LAND SURVEYOR
 Donald L. Peel
 OREGON
 DONALD L. PEEL
 752

**COUNTY SURVEYORS FILE DATA
 DO NOT REMOVE FROM OFFICE**

**SURVEY IN
 SECTION 18, T21S, R5W, W.M.
 DOUGLAS COUNTY, OREGON**

FOR
WEYERHAEUSER COMPANY
 BY
PEEL BAKER LAND SURVEYING INC.
 JULY 10, 1989

1/4 CORNER 18 & 19

FND 1-1/4" IRON PIPE WITH DOUGLAS COUNTY BRASS CAP DATED 1970
 32" FIR STUMP, N32E, 23.7' - NO VISIBLE MARKS
 48" CEDAR STUMP, S38-1/4W, 20.7' - NO MARKS
 28" CEDAR, S65-3/4W, 52.4' - CLOSED FACE
 18" CEDAR, N26-3/4W, 27.0' - CLOSED FACE

MAP FILE M1128-55

MAP FILE M1128-55