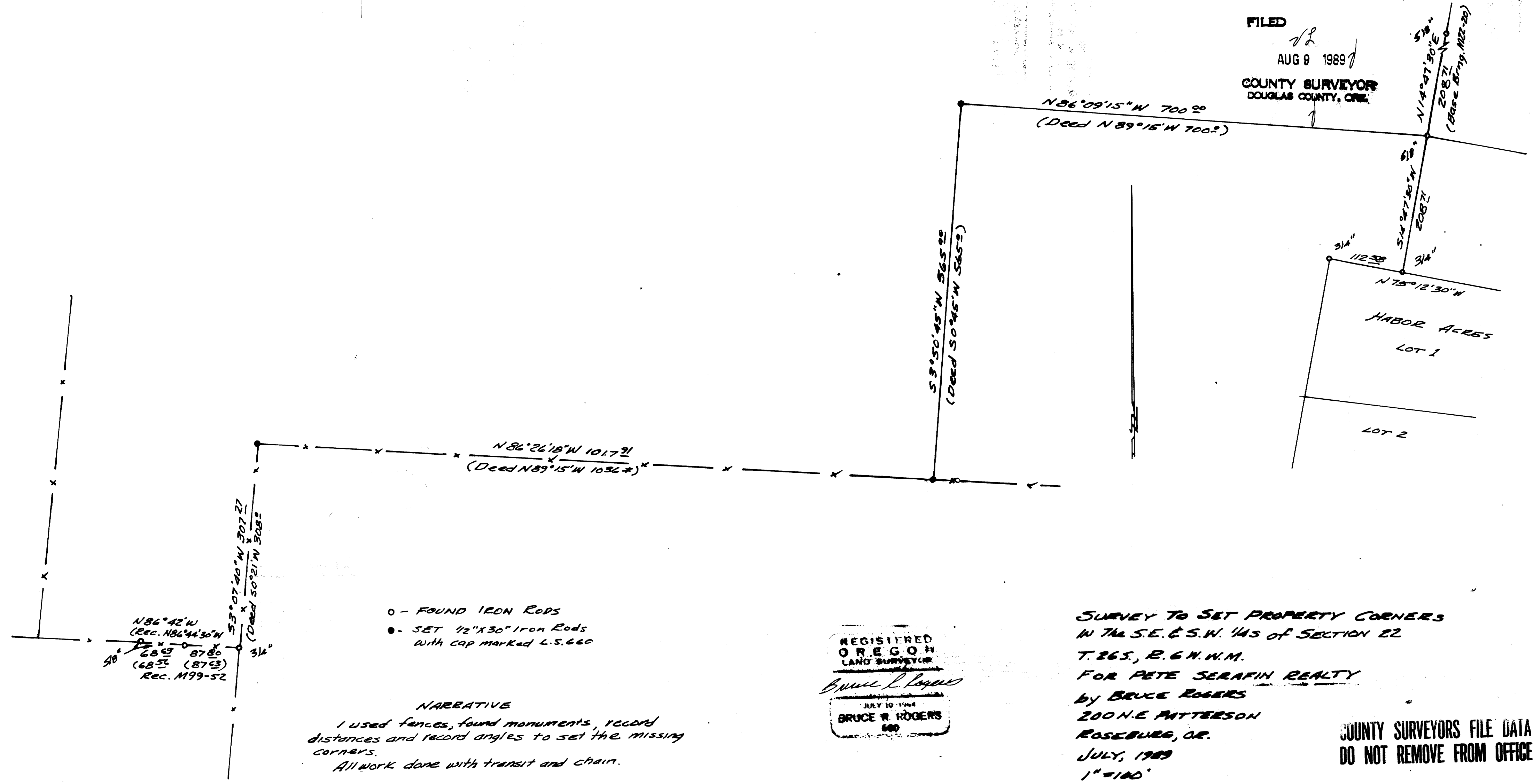


MAP FILE M.10.8 - 70



FILED
 ✓ L
 AUG 9 1989
 COUNTY SURVEYOR
 DOUGLAS COUNTY, ORE.

MAP FILE M.10.8 - 70

- - FOUND IRON RODS
- - SET 1/2" X 30" IRON RODS WITH CAP MARKED L.S. 660

NARRATIVE
 I used fences, found monuments, record distances and record angles to set the missing corners.
 All work done with transit and chain.

REGISTERED
 OREGON
 LAND SURVEYOR
 Bruce R. Rogers
 JULY 10 1988
 BRUCE R. ROGERS
 600

SURVEY TO SET PROPERTY CORNERS
 IN THE S.E. & S.W. 1/4S OF SECTION 22
 T. 26S., R. 6 W. N.M.
 FOR PETE SERAFIN REALTY
 by BRUCE ROGERS
 200 N.E. PATTERSON
 ROSEBURG, OR.
 JULY, 1989
 1" = 100'

**COUNTY SURVEYORS FILE DATA
 DO NOT REMOVE FROM OFFICE**