

SURVEY FOR  
INTERNATIONAL PAPER COMPANY  
IN  
SE1/4NW1/4, SW1/4NE1/4 & NW1/4SE1/4  
SECTION 29, T22S, R5W, W.M.  
DOUGLAS COUNTY, OREGON  
BY  
ROBERTS SURVEYING INC  
29 WEST 29TH STREET  
EUGENE, OREGON 97405

MAY 26, 1989  
SCALE 1 = 300'

**LEASE CORNER NO. 1**

SET 3/4" x 24" ALUMINUM ROD AND CAP  
16" FIR, S89°E, 56.1' (SCRIBED)

**LEASE CORNER NO. 2**

SET 3/4" x 24" ALUMINUM ROD AND CAP  
12" FIR, S50°E, 38.1' (SCRIBED)

**LEASE CORNER NO. 3**

SET 3/4" x 12" ALUMINUM ROD AND CAP  
18" W. OAK, S42°W, 34.2' (SCRIBED)

**LEASE CORNER NO. 4**

SET 3/4" x 24" ALUMINUM ROD AND CAP  
20" FIR, N55°W, 58.6' (SCRIBED)

**LEASE CORNER NO. 5**

SET 3/4" x 12" ALUMINUM ROD AND CAP  
17" FIR, N45°E, 178.9' (SCRIBED)

**NARRATIVE,** THE PURPOSE OF THIS SURVEY IS TO DESCRIBE A PARCEL OF LAND TO BE LEASED TO INTERNATIONAL PAPER COMPANY FOR A PROPOSED QUARRY SITE. 3/4" ALUMINUM RODS WITH 3/4" ALUMINUM CAPS WERE SET AT THE CORNERS OF SAID PROPOSED QUARRY SITE. A CLOSED MEANDER, WILD T-16 THEODOLITE AND A DI-4L, E.D.M. TRAVERSE WAS RUN THRU THESE 5 CORNERS. INVERSES WERE COMPUTED BETWEEN ALUMINUM RODS WITH THE RESULTING BEARINGS AND DISTANCES AS SHOWN IN THE ENCLOSED TABLE. AN INVERSE WAS COMPUTED BETWEEN CORNER "B" AND L.C.-1 AND USED FOR DESCRIPTION PURPOSES.

**LEGEND**

- CORNERS FOUND AND USED FOR CONTROL
  - CORNERS SET, 3/4" ALUMINUM RODS WITH 3/4" ALUMINUM CAPS. CAPS STAMPED S-T-R, DATE AND P.L.S. 1039.
  - ( ) DATA OF RECORD
- BASIS OF BEARING, SOUTH BOUNDARY OF NE1/4SW1/4 SECTION 29 FROM C.S. M79-79
- DISTANCES TO B.T.'S ARE CENTER MEASURE
- ALL NEW B.T.'S ARE SCRIBED AND HAVE A BRASS WASHER STAMPED "P.L.S. 1039" NAILED TO LOWER BLAZE.

**"A" S.W. 1/16 CORNER SECTION 29**

FD. 5/8" IRON PIN AS SET IN C.S. M79-79  
PIN SET AT SOUTH-EAST FENCE CORNER  
10" OAK, N76°E, 36.1' (SCAR VIS.), 1981 B.T.  
26" OAK, N45°W, 58.8' (SCAR VIS.), 1981 B.T.

**"B" C.S. 1/16 CORNER SECTION 29**

FD. 5/8" IRON PIN AS SET IN C.S. M79-79  
PIN SET ON EAST-WEST FENCE LINE  
16" FIR, S52°W, 15.7' (SCAR VIS.), 1981 B.T.  
16" FIR, N31°W, 33.3' (SCAR VIS.), 1981 B.T.

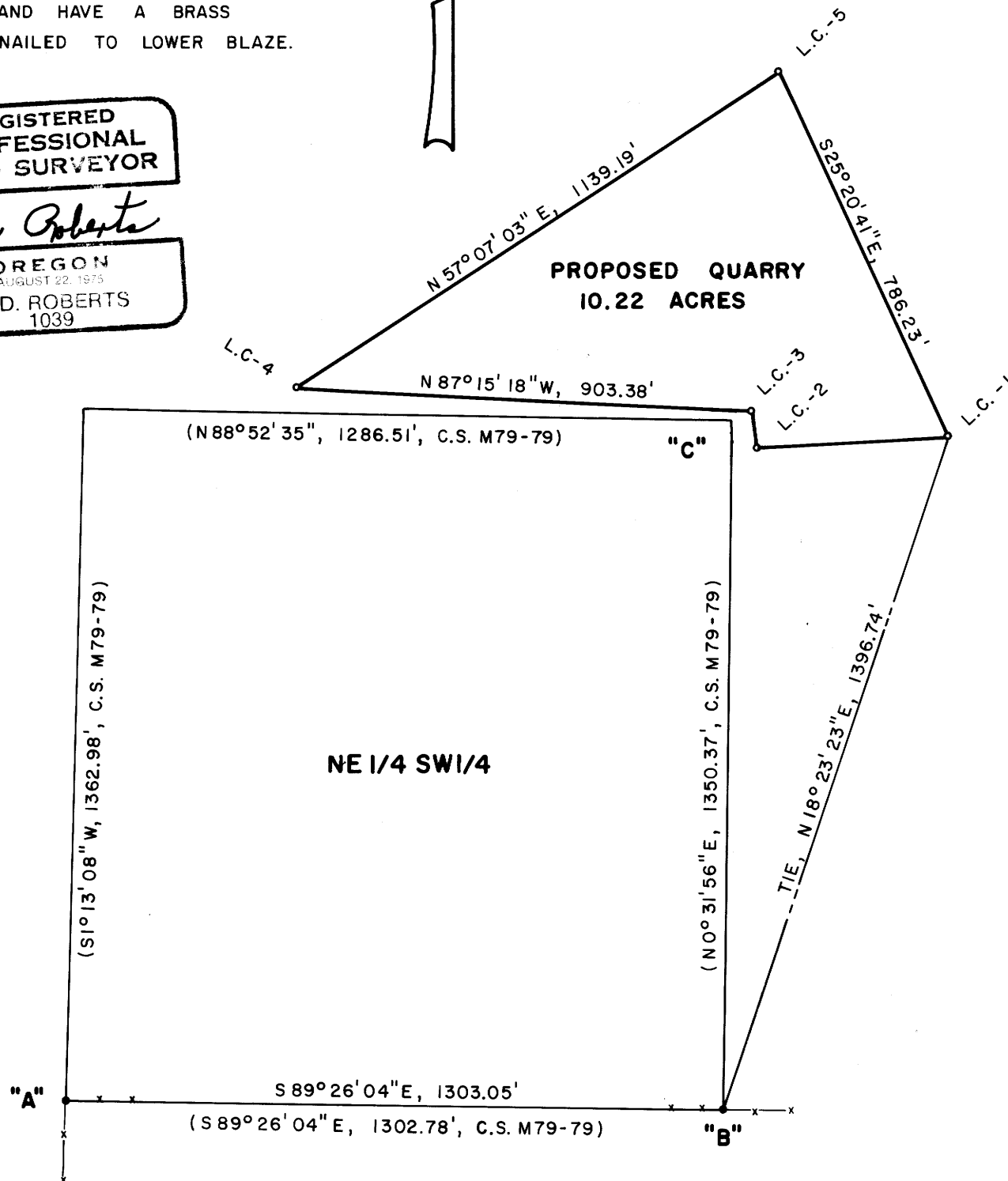
**"C" CENTER 1/4 CORNER SECTION 29**

DID NOT FIND 5/8" IRON PIN SET IN  
C.S. M79-79

**SURVEY DATA**

L.C.-1	S85°41'44"W, 374.26'
L.C.-2	N12°56'55"W, 78.90'
L.C.-3	N87°15'18"W, 903.38'
L.C.-4	N57°07'03"E, 1139.19'
L.C.-5	S25°20'41"E, 786.23'
L.C.-1	

REGISTERED  
PROFESSIONAL  
LAND SURVEYOR  
  
*Les Roberts*  
OREGON  
AUGUST 22, 1975  
L. D. ROBERTS  
1039



FILED  
JUN 20 1989  
COUNTY SURVEYOR  
DOUGLAS COUNTY, ORE  
6/3/91  
M108-23

**COUNTY SURVEYORS FILE DATA  
DO NOT REMOVE FROM OFFICE**

VAD FILE M108-23 6/3/91