

**N.W. CORNER SECTION 16**

FD. 1962 DOUGLAS COUNTY BRASS CAP. HAINES 1961 "T"  
 IRON SET IN C.S. M22-1 BEARS S67°47'30"E, 4.85'  
 36" DOWNED FIR, S55°E, 7.3' (BARK SCRIBED), 1871 B.T.  
 48" FIR STUMP, N67°W, 17.3' (NO MARKS), 1871 B.T.  
 14" FIR, S57°W, 17.7' (SCAR VIS.), 1961 B.T.  
 11" FIR, S25°E, 25.7' (SCAR VIS.), 1962 B.T.  
 14" FIR, N61°W, 9.1' (SCAR VIS.), 1962 B.T.

**NORTH 1/4 CORNER SECTION 16**

NO EVIDENCE FOUND OF ORIGINAL CORNER. SET  
 3/4" x 36" ALUMINUM ROD WITH 3/4" ALUMINUM CAP  
 BY SINGLE PROPORTIONATE MEASURE.  
 (BURIED PURPLE M.M. UNDER 36" ALUMINUM ROD)  
 SET 33" FIR, S02°W, 29.1' (SCRIBED/PAINTED RED)  
 48" FIR STUMP, N34°W, 84.0' (SCRIBED/PAINTED RED)

**N.E. CORNER SECTION 16**

FD. 1965 B.L.M. BRASS CAP & HAINES 1960 "T" IRON.  
 12" MADRONE STUMP, N85°W, 4.0' (NO MARKS), 1871 B.T.  
 32" FIR, S65°E, 3.5' (OPENED FACE), 1871 B.T.  
 18" FIR, N33°E, 24.7' (BARK SCRIBE), 1960 B.T.  
 30" FIR, N25°W, 23.2' (BARK SCRIBE), 1960 B.T.  
 9" OAK, S40°E, 55.7' (SCAR VIS.), 1965 B.T.

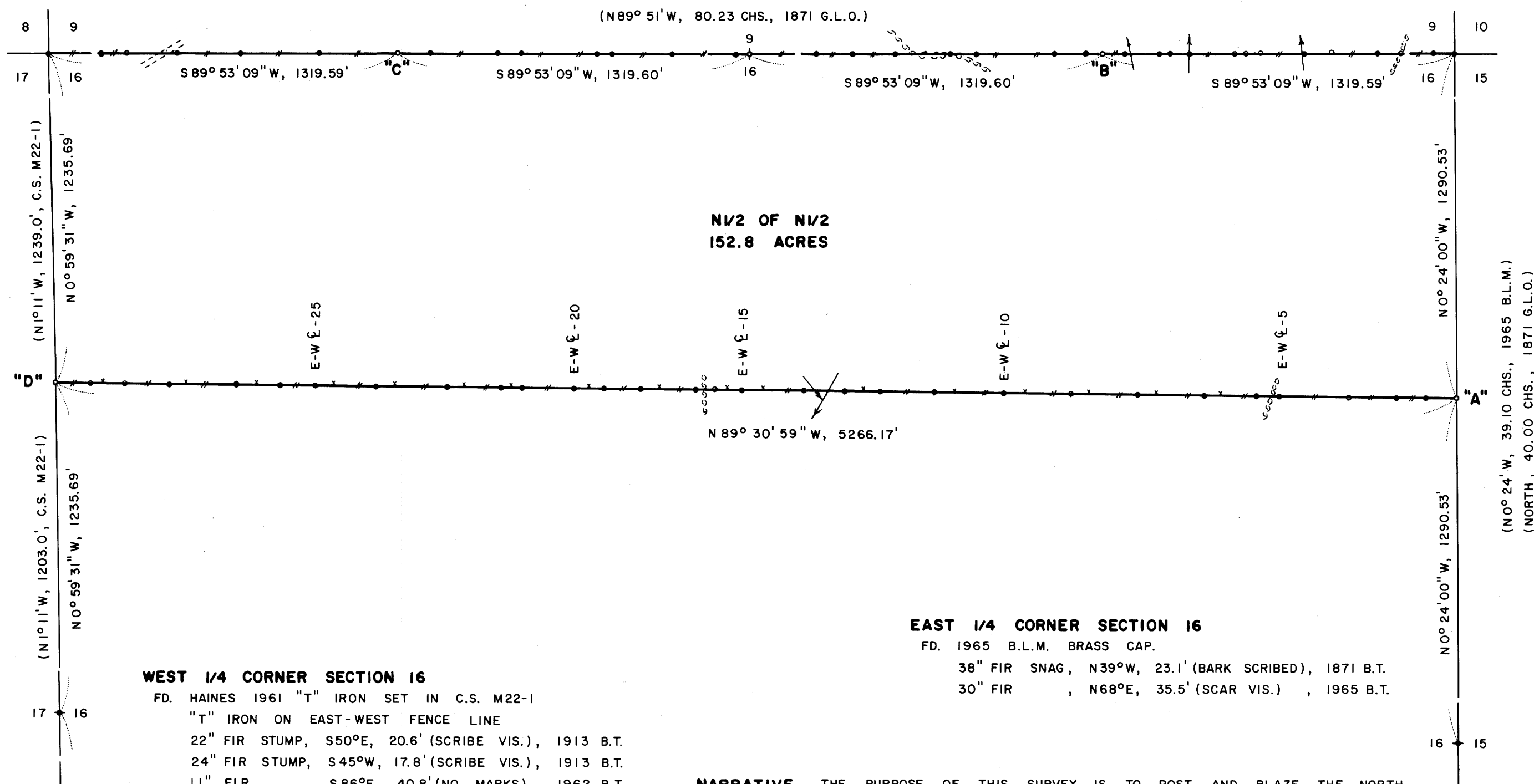
**COUNTY SURVEYORS FILE DATA  
 DO NOT REMOVE FROM OFFICE**

FILED

COUNTY SURVEYOR  
 DOUGLAS COUNTY, OREGON

**SURVEY FOR  
 INTERNATIONAL PAPER COMPANY  
 IN  
 N 1/2 SECTION 16, T22S, R7W  
 DOUGLAS COUNTY, OREGON  
 BY  
 ROBERTS SURVEYING INC.  
 29 WEST 29TH STREET  
 EUGENE, OREGON 97405**

**JUNE 19, 1989  
 SCALE 1" = 400'**



**N 1/2 OF N 1/2  
 152.8 ACRES**

**EAST 1/4 CORNER SECTION 16**

FD. 1965 B.L.M. BRASS CAP.  
 38" FIR SNAG, N39°W, 23.1' (BARK SCRIBED), 1871 B.T.  
 30" FIR, N68°E, 35.5' (SCAR VIS.), 1965 B.T.

**WEST 1/4 CORNER SECTION 16**

FD. HAINES 1961 "T" IRON SET IN C.S. M22-1  
 "T" IRON ON EAST-WEST FENCE LINE  
 22" FIR STUMP, S50°E, 20.6' (SCRIBED VIS.), 1913 B.T.  
 24" FIR STUMP, S45°W, 17.8' (SCRIBED VIS.), 1913 B.T.  
 11" FIR, S86°E, 40.8' (NO MARKS), 1962 B.T.

**"A" NORTH 1/16 CORNER SECTION 16**

SET 3/4" x 36" ALUM. ROD WITH 3/4" ALUM. CAP.  
 (BURIED PURPLE M.M. UNDER 36" ALUMINUM ROD)  
 11" FIR, N84°E, 20.3' (SCRIBED/PAINTED RED)  
 17" FIR, N02°W, 3.9' (SCRIBED/PAINTED RED)

**"B" EAST 1/16 CORNER SECTION 16**

SET 3/4" x 24" ALUM. ROD WITH 3/4" ALUM. CAP.  
 (BURIED PURPLE M.M. UNDER 24" ALUMINUM ROD)  
 18" MAPLE, S01°W, 9.8' (SCRIBED/PAINTED RED)  
 19" MAPLE, N17°W, 44.4' (SCRIBED/PAINTED RED)

**"C" WEST 1/16 CORNER SECTION 16**

SET 3/4" x 36" ALUM. ROD WITH 3/4" ALUM. CAP.  
 (BURIED PURPLE M.M. UNDER 36" ALUMINUM ROD)  
 10" FIR, N42°E, 14.6' (SCRIBED/PAINTED RED)  
 12" FIR, S70°E, 15.8' (SCRIBED/PAINTED RED)

**"D" NORTH 1/16 CORNER SECTION 16**

SET 3/4" x 36" ALUM. ROD WITH 3/4" ALUM. CAP.  
 (BURIED PURPLE M.M. UNDER 36" ALUMINUM ROD)  
 14" FIR, S83°W, 34.5' (SCRIBED/PAINTED RED)  
 22" FIR, N19°E, 19.6' (SCRIBED/PAINTED RED)

**WITNESS CORNER TO S.W. CORNER SECTION 16**

FD. 1962 DOUGLAS COUNTY BRASS CAP.  
 28" DOWNED FIR, S05°E, 146.3' (SCAR VIS.), 1962 C.S.B.T.  
 28" FIR, N14°E, 204.2' (SCAR VIS.), 1962 C.S.B.T.  
 36" FIR STUMP, S47°W, 116.6' (NO MARKS), 1962 C.S.B.T.  
 ORIGINAL CORNER STUMP BEARS SOUTH, 4.0'

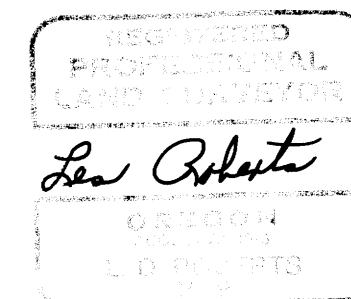
**NARRATIVE.** THE PURPOSE OF THIS SURVEY IS TO POST AND BLAZE THE NORTH LINE OF SECTION 16 AND TO ALSO POST AND BLAZE THE EAST-WEST E OF THE NORTH 1/2 OF SECTION 16. THE N.E. SECTION CORNER, THE N.W. SECTION CORNER, THE WEST 1/4 CORNER AND THE EAST 1/4 CORNER WERE FOUND IN THE FIELD AS SHOWN. A CLOSED MEANDER, WILD T-16 THEODOLITE AND A DI-4L, E.D.M. TRAVERSE WAS RUN ALONG THE NORTH LINE OF SECTION 16 AND ALSO ALONG THE EAST-WEST E OF THE NORTH 1/2 OF SECTION 16. OFFSETS WERE COMPUTED FROM THESE MEANDER TRAVERSES TO THE TRUE PROPERTY LINES. PROPERTY LINES WERE MARKED WITH RED PAINTED BLAZES, YELLOW INTERNATIONAL PAPER COMPANY BOUNDARY LINE DECALS ATTACHED TO 72" ALUMINUM POSTS AND FLUORESCENT ORANGE MAGNETIC MARKERS. ALUMINUM POSTS AND BURIED MAGNETIC MARKERS ARE REFERENCED BY A 4" x 6" ALUMINUM BOUNDARY LINE TAG NAILED TO A NEAR-BY TREE. TAG NOTES BEARING AND DISTANCE FROM TREE TO ALUMINUM POST OR BURIED MAGNETIC MARKER. THE NORTH 1/4 CORNER OF SECTION 16 WAS SET BY SINGLE PROPORTIONATE MEASURE BETWEEN THE FOUND N.W. AND N.E. SECTION CORNERS AS SHOWN. THE EAST 1/16 CORNER, CORNER "B", AND THE WEST 1/16 CORNER, CORNER "C", ON THE NORTH LINE OF SECTION 16 WERE SET MIDWAY BETWEEN THE NORTH 1/4 CORNER AND THE N.E. SECTION CORNER AND THE N.W. SECTION CORNER RESPECTIVELY, AS SHOWN. THE NORTH 1/16 CORNER BETWEEN SECTIONS 15 AND 16, CORNER "A", WAS SET MIDWAY BETWEEN THE EAST 1/4 CORNER AND THE N.E. SECTION CORNER, AS SHOWN. THE NORTH 1/16 CORNER BETWEEN SECTIONS 16 AND 17, CORNER "D", WAS SET MIDWAY BETWEEN THE WEST 1/4 CORNER AND THE N.W. SECTION CORNER, AS SHOWN. COULD NOT FIND 1961 "T" IRON SET BY HAINES IN C.S. M22-1. THE EAST-WEST E OF THE NORTH 1/2 OF SECTION 16 WAS DETERMINED BY COMPUTING AN INVERSE BETWEEN CORNERS "A" AND "D", THUS THE RESULTING BEARING AND DISTANCE OF N89°30'59"W, 5266.17 FEET.

**OFFSETS TO FENCE LINE ALONG EAST-WEST E OF THE NORTH 1/2 OF SECTION 16**

STATION	SOUTH	NORTH	STATION	SOUTH	NORTH	STATION	SOUTH	NORTH
E-W E-2	NO FC.		E-W E-13		3.0'	E-W E-24	5.0'	
E-W E-3	NO FC.		E-W E-14		5.0'	E-W E-25	8.0'	
E-W E-4	NO FC.		E-W E-15		5.0'	E-W E-26	2.0'	
E-W E-5		5.0'	E-W E-16		5.0'	E-W E-27	1.0'	
E-W E-6	4.0'		E-W E-17		8.0'	E-W E-28	3.5'	
E-W E-7	4.0'		E-W E-18		8.0'	E-W E-29	2.0'	
E-W E-8	4.0'		E-W E-19		8.0'	E-W E-30		5.0'
E-W E-9	5.5'		E-W E-20		7.0'	N. 1/16 COR.		10.0'
E-W E-10	4.0'		E-W E-21		12.0'			
E-W E-11	14.0'		E-W E-22		12.0'			
E-W E-12	3.0'		E-W E-23		10.0'			

**LEGEND**

- CORNERS FOUND AND USED FOR CONTROL.
- CORNERS SET, 3/4" ALUMINUM RODS WITH 3/4" ALUMINUM CAPS. CAPS S-T-R, DATE AND P.L.S. 1039.
- MARKED AND BLAZED THIS SURVEY.
- ( ) DATA OF RECORD, 1871 G.L.O. SURVEY, 1965 B.L.M. SURVEY AND SURVEY M22-1.
- (M.M.) INDICATES LOCATION OF BURIED MAGNETIC MARKERS. MARKERS ARE FLUORESCENT ORANGE IN COLOR AND ARE BURIED, 12" TO 18" DEEP, ALONG LINE AS SHOWN.
- BASIS OF BEARING, EAST LINE SEC. 16 FROM 1965 B.L.M. SURVEY DISTANCES TO B.T.'S ARE CENTER MEASURE.
- ALL NEW B.T.'S ARE SCRIBED AND HAVE A BRASS WASHER STAMPED "P.L.S. 1039" NAILED TO LOWER BLAZE. SCRIBED BLAZES ARE PAINTED RED.
- ALL NEW B.T.'S HAVE A 6" STEEL SPIKE DRIVEN INTO THE CENTER OF THE TREE TO SERVE AS A CHAINING POINT FOR MEASURED DIST.



LOCATION OF BURIED MAGNETIC MARKERS					
N.W. COR.	0'	EAST (AL. POST)	N. 1/16 COR.	0'	WEST (M.M. & AL. POST)
N 16-1	207'	EAST (M.M. & AL. POST)	E-W E-2	123'	WEST (M.M.)
N 16-2	302'	EAST (M.M.)	E-W E-3	230'	WEST (M.M. & AL. POST)
N 16-3	483'	EAST (M.M. & AL. POST)	E-W E-4	406'	WEST (M.M. & AL. POST)
N 16-4	728'	EAST (M.M. & AL. POST)	E-W E-5	671'	WEST (M.M. & AL. POST)
N 16-5	1023'	EAST (M.M. & AL. POST)	E-W E-6	754'	WEST (M.M.)
W. 1/16 COR.	1320'	EAST (M.M. & AL. POST)	E-W E-7	949'	WEST (M.M. & AL. POST)
N 16-7	1443'	EAST (M.M. & AL. POST)	E-W E-8	1200'	WEST (M.M. & AL. POST)
N 16-8	1694'	EAST (M.M. & AL. POST)	E-W E-9	1452'	WEST (M.M. & AL. POST)
N 16-9	1788'	EAST (M.M. & AL. POST)	E-W E-10	1708'	WEST (M.M. & AL. POST)
N 16-10	2070'	EAST (M.M. & AL. POST)	E-W E-11	1963'	WEST (M.M. & AL. POST)
N 16-11	2126'	EAST (M.M.)	E-W E-12	2171'	WEST (M.M. & AL. POST)
N 16-12	2352'	EAST (M.M. & AL. POST)	E-W E-13	2300'	WEST (M.M.)
N 16-13	2589'	EAST (M.M.)	E-W E-14	2455'	WEST (M.M. & AL. POST)
N. 1/4 COR.	2639'	EAST (M.M. & AL. POST)	E-W E-15	2687'	WEST (M.M. & AL. POST)
N 16-15	250'	EAST (M.M. & AL. POST)	E-W E-16	2789'	WEST (M.M.)
N 16-16	382'	EAST (M.M.)	E-W E-17	2861'	WEST (M.M. & AL. POST)
N 16-17	546'	EAST (M.M. & AL. POST)	E-W E-18	3064'	WEST (M.M. & AL. POST)
N 16-18	753'	EAST (M.M.)	E-W E-19	3200'	WEST (M.M.)
N 16-19	851'	EAST (M.M. & AL. POST)	E-W E-20	3314'	WEST (M.M. & AL. POST)
N 16-20	1148'	EAST (M.M. & AL. POST)	E-W E-21	3508'	WEST (M.M.)
N 16-21	1261'	EAST (M.M.)	E-W E-22	3590'	WEST (M.M. & AL. POST)
E. 1/16 COR.	1320'	EAST (M.M. & AL. POST)	E-W E-23	3792'	WEST (M.M. & AL. POST)
N 16-23	1410'	EAST (M.M. & AL. POST)	E-W E-24	4060'	WEST (M.M. & AL. POST)
N 16-24	1538'	EAST (M.M. & AL. POST)	E-W E-25	4287'	WEST (M.M. & AL. POST)
N 16-25	1579'	EAST (M.M.)	E-W E-26	4417'	WEST (M.M.)
N 16-26	1656'	EAST (M.M. & AL. POST)	E-W E-27	4587'	WEST (M.M. & AL. POST)
N 16-27	1827'	EAST (M.M.)	E-W E-28	4836'	WEST (M.M. & AL. POST)
N 16-28	1866'	EAST (M.M. & AL. POST)	E-W E-29	5003'	WEST (M.M. & AL. POST)
N 16-29	1916'	EAST (M.M.)	E-W E-30	5133'	WEST (M.M.)
N 16-30	2082'	EAST (M.M. & AL. POST)	N. 1/16 COR.	5266'	WEST (M.M. & AL. POST)
N 16-31	2188'	EAST (M.M. & AL. POST)			
N 16-32	2360'	EAST (M.M.)			
N 16-33	2446'	EAST (M.M. & AL. POST)			
N 16-34	2570'	EAST (M.M.)			
N.E. COR.	2639'	EAST (M.M. & AL. POST)			

63/91  
 1108-22