

COUNTY SURVEYORS FILE DATA
DO NOT REMOVE FROM OFFICE

FILED
MAY 31 1989
COUNTY SURVEYOR
DOUGLAS COUNTY, OREGON

SURVEY FOR
ROSBORO LUMBER COMPANY
IN
EAST 1/2 SECTION 19, T21S, R4W
SW1/4NW1/4 SECTION 20, T21S, R4W
DOUGLAS COUNTY, OREGON
BY
ROBERTS SURVEYING INC.
29 WEST 29TH STREET
EUGENE, OREGON 97405

APRIL 18, 1989
SCALE 1" = 300'

"A" EAST 1/16 CORNER NORTH LINE
FD. 1" ALUMINUM PIPE SET IN C.S. RM-2-17
34" FIR, N08°W, 85.2' (SCAR VIS.), 1962 B.T.
36" FIR, S65°W, 22.1' (SCAR VIS.), 1962 B.T.
9" WHITE FIR, N65°E, 12.2' (SCRIBE VIS.), 1986 B.T.
10" FIR, S19°E, 14.3' (SCRIBE VIS.), 1986 B.T.

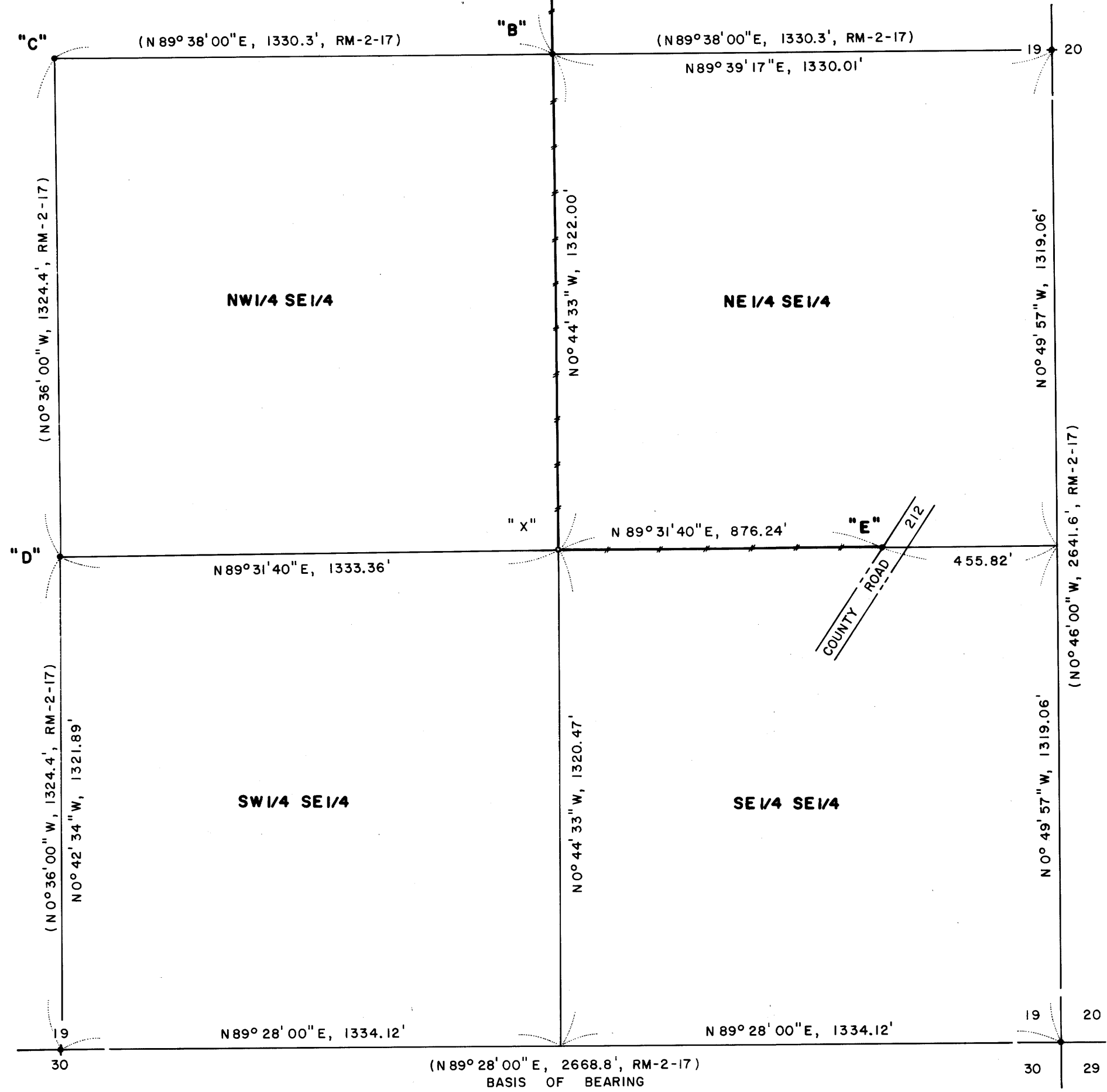
"B" C.E. 1/16 CORNER SECTION 19
FD. 1" IRON PIPE WITH YELLOW PLASTIC CAP SET
IN C.S. M103-9
12" FIR, S86°E, 30.5' (SCAR VIS.), 1962 B.T.
38" DOUBLE MAPLE, S51°W, 31.4' (SCRIBE VIS.), 1962 B.T.
11" FIR, N20°E, 8.8' (SCRIBE VIS.), 1986 B.T.

"C" CENTER 1/4 CORNER SECTION 19
FD. 1" ALUMINUM PIPE SET IN C.S. RM-2-17
CORNER NOT TIED THIS SURVEY

"D" C.S. 1/16 CORNER SECTION 19
FD. 1" ALUMINUM PIPE SET IN C.S. RM-2-17
18" FIR, S88°E, 23.9' (SCAR VIS.), 1962 B.T.

"E" R/W PIN ON E-W C OF SE1/4 SECTION 19
FD. 5/8" IRON PIN SET IN C.S. M43-28. CORNER
FALLS 0.15 SOUTH OF E-W C OF SE1/4

NORTH N.W. CORNER SAMUEL HALL D.L.C.
FD. 1968 DOUGLAS COUNTY BRASS CAP AT
EAST-WEST-SOUTH FENCE CORNER. ALSO
FOUND 1" IRON PIPE BESIDE BRASS CAP.
20" INCENSE CEDAR, S64°W, 29.5' (SCAR VIS.), 1968 B.T.



EAST 1/4 CORNER SECTION 19
FD. 5/8" IRON PIN SET IN C.S. RM-2-17
36" FIR, N38°W, 35.8' (SCAR VIS.), 1962 B.T.
50" DOUBLE CEDAR, N88°E, 35.2' (SCAR VIS.), 1962 B.T.

"Z" PROPERTY CORNER ON D.L.C. LINE
SET 5/8" x 32" IRON PIN ON NORTH LINE SAMUEL HALL
D.L.C. NO. 37. CORNER FALLS ON EAST EDGE OF
ROAD. NO B.T.'S SET.

"Y" PROPERTY CORNER ON N-S C OF NE1/4
SET 5/8" x 30" IRON PIN WITH YELLOW PLASTIC CAP
8" FIR, N08°W, 10.9' (SCRIBED/PAINTED RED)
11" FIR, S70°W, 22.0' (SCRIBED/PAINTED RED)

"X" S.E. 1/16 CORNER SECTION 19
SET 5/8" x 30" IRON PIN WITH YELLOW PLASTIC CAP
12" FIR, N25°E, 9.5' (SCRIBED/PAINTED RED)
16" FIR, N76°W, 12.5' (SCRIBED/PAINTED RED)
A 5/8" IRON PIN SET IN C.S. M43-28 BEARS
EAST, 29.3'.

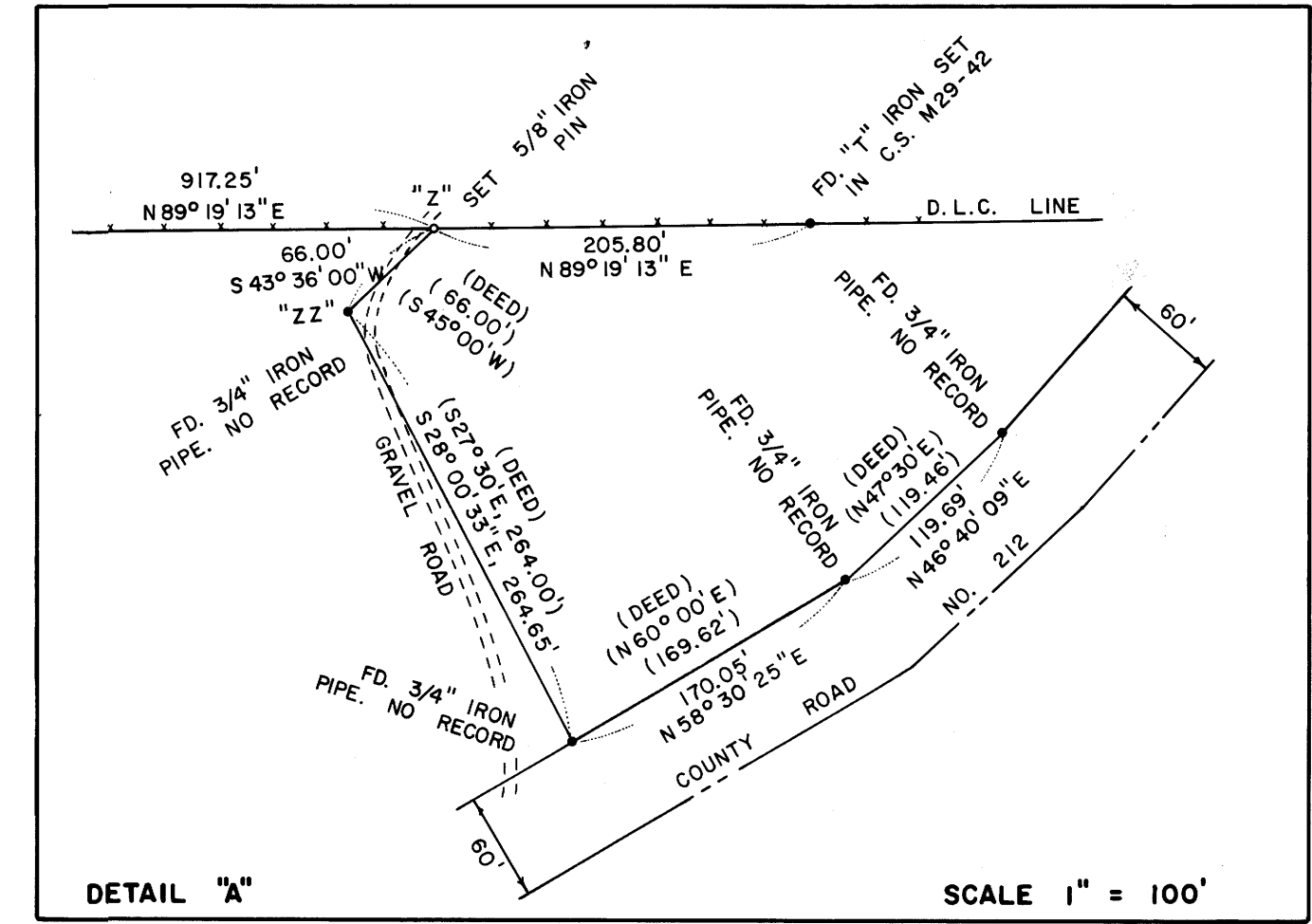
LEGEND

- CORNERS FOUND AND USED FOR CONTROL
- MONUMENTS SET, 5/8" IRON PINS WITH YELLOW PLASTIC CAPS. CAPS MARKED "ROBERTS P.L.S. 1039"
- LINES BLAZED AND POSTED THIS SURVEY
- () DATA OF RECORD

BASIS OF BEARING, EAST 1/2 OF SOUTH LINE SECTION 19 FROM C.S. RM-2-17

DISTANCES TO B.T.'S ARE CENTER MEASURE

ALL NEW B.T.'S ARE SCRIBED AND HAVE A BRASS WASHER STAMPED "P.L.S. 1039" NAILED TO LOWER BLAZE. SCRIBED BLAZES ARE PAINTED RED. DEED REF. BOOK 1041 PAGE 547



NARRATIVE, THE PURPOSE OF THIS SURVEY IS TO POST AND BLAZE ROSBORO LUMBER COMPANY BOUNDARY LINES IN SECTIONS 19 AND 20. THE NORTH LINE OF THE SAMUEL HALL D.L.C. NO. 37 WAS ESTABLISHED BY USING 2 POINTS FOUND IN THE FIELD. POINT 1 IS THE ORIGINAL NORTH N.W. CORNER AS MONUMENTED BY DOUGLAS COUNTY IN 1968. POINT 2 IS A "T" IRON SET BY WILFORD HAINES IN C.S. M29-42. THE COMPUTED INVERSE BETWEEN THESE 2 POINTS IS N89°19'13"E, 1123.05 FEET AS SHOWN IN DETAIL "A". CORNER "Z" WAS SET AS FOLLOWS; THE RECORD DEED DISTANCE OF 66.00 FEET BETWEEN POINTS "Z" AND "ZZ" WAS HELD AND INTERSECTED WITH THE PREVIOUSLY ESTABLISHED NORTH LINE OF D.L.C. NO. 37, THUS THE RESULTING INVERSE BEARING AND DISTANCE OF N89°19'13", 917.25 FEET AND S43°36'00"W, 66.00 FEET AS SHOWN. CORNER "Y" WAS SET ON THE WEST BOUNDARY OF THE SE1/4NE1/4 AND 957.00 FEET NORTHERLY, DEED CALL, FROM THE FOUND C.E. 1/16 CORNER. CORNER "X" WAS SET AT THE POINT OF INTERSECTION OF THE NORTH-SOUTH AND EAST-WEST CENTERLINES OF SECTION 19. LINES "Y"- "B", "B"- "X" AND "X"- "E" WERE MARKED IN THE FIELD WITH RED PAINTED BLAZES AND RED RIBBON. LINE "Z"- "Y" WAS MARKED IN THE FIELD WITH RED PAINTED BLAZES, RED RIBBON AND GREEN METAL FENCE POSTS.

REGISTERED
PROFESSIONAL
LAND SURVEYOR
Lee Roberts
OREGON
L. D. ROBERTS
1039

C.S. File No. 63/185
MAP FILE M108-12