

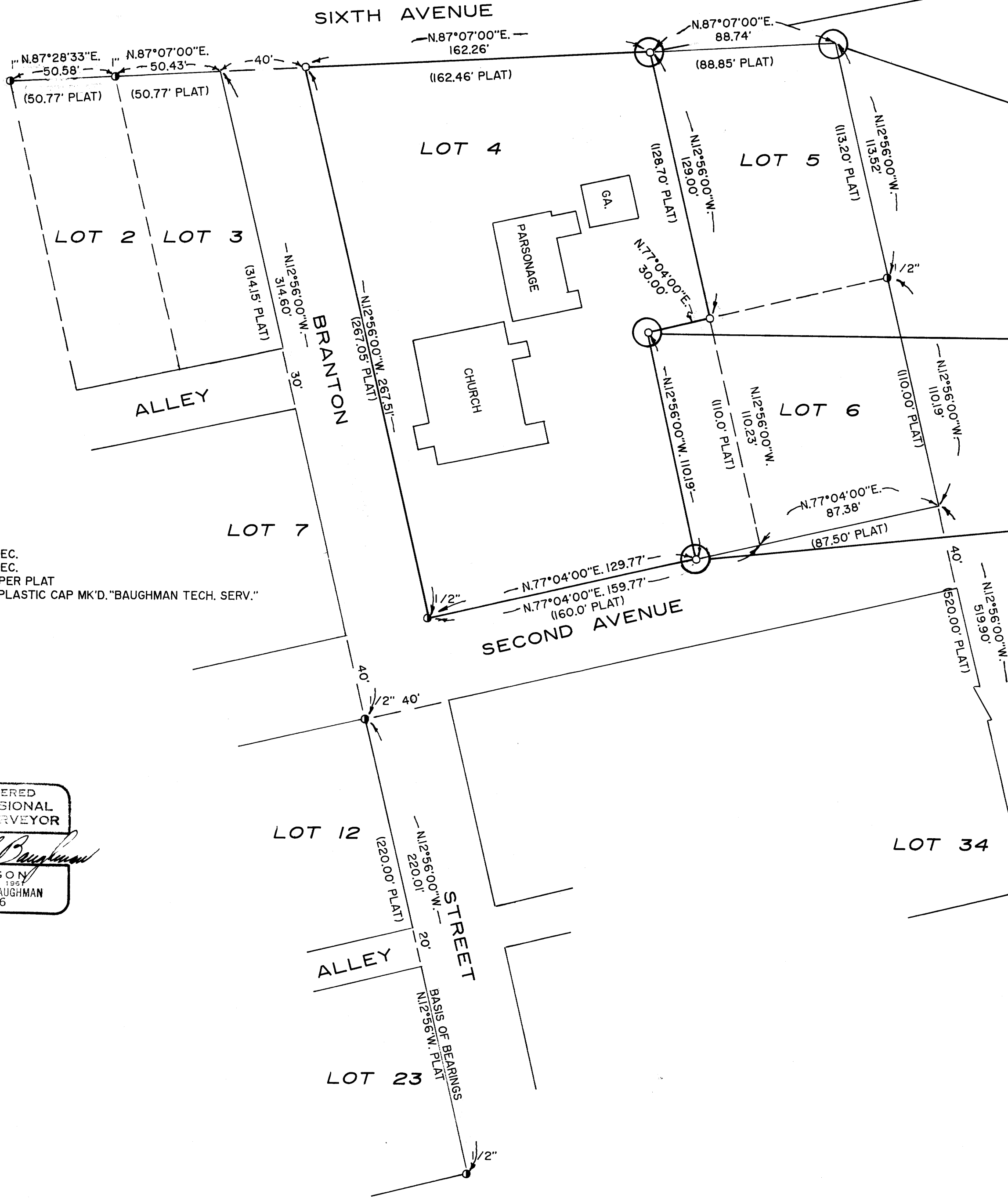
COUNTY SURVEYORS FILE DATA
DO NOT REMOVE FROM OFFICE

SURVEY FOR PROPERTY CORNERS
IN LOT 4, E.H. BRANTON SUBDIVISION
IN THE S.E. 1/4 OF SEC. 18, T. 25 S., R. 5 W., W.M.
MAY 1989 SCALE 1" = 40'

FILED
MAY 26 1989
COUNTY SURVEYOR
DOUGLAS COUNTY, ORE.

SURVEYED FOR:
SUTHERLIN FAMILY CHURCH
324 BRANTON ST.
SUTHERLIN, OR 97479

SURVEYED BY:
BAUGHMAN TECHNICAL SERVICES, INC.
433 S.E. MAIN STREET
ROSEBURG, OR 97470



LEGEND:
 ⊙ = FD. 3/4" I.R. NO REC.
 ⊙ = FD. 3/4" I.P. NO REC.
 ⊙ = FD I.P. AS NOTED PER PLAT
 ⊙ = SET 5/8" I.R. W/PLASTIC CAP MK'D. "BAUGHMAN TECH. SERV."
 LENGTH = 30"

TABLE FOR BLOWUP TIES
 A. S.50°28'22"E., 1.04'
 B. S.53°02'10"E., 1.72'
 C. S.62°43'08"W., 0.53'
 D. N.59°55'56"E., 0.33'

REGISTERED
PROFESSIONAL
LAND SURVEYOR

Glenn S. Baughman
 OREGON
 JULY 14, 1967
 GLENN S. BAUGHMAN
 536

SURVEY NARRATIVE:

THE PURPOSE OF THIS SURVEY WAS TO ESTABLISH THE PROPERTY CORNERS OF THAT PROPERTY DESCRIBED IN INST. NO. 76-5503 OF THE DEED RECORDS OF DOUGLAS COUNTY, OREGON BEING A PORTION OF LOT 4 OF THE E. H. BRANTON SUBDIVISION. MONUMENTS FOUND AT THE N.E. CORNER OF LOT 12 AND THE S.E. CORNER OF LOT 23 WERE USED AS THE BASIS OF BEARINGS. THE N.W. CORNER OF LOT 4 WAS ESTABLISHED AT THE INTERSECTION OF RECORD BEARINGS FROM ORIGINAL MONUMENTS FOUND AT THE S.W. CORNER OF LOT 4 AND THE N.W. CORNER OF LOT 3. ORIGINAL MONUMENTS FOUND AT THE S.E. CORNER OF LOT 34 AND THE N.E. CORNER OF LOT 6 CONTROLLED THE EAST LINE OF THE SUBDIVISION. THE N.E. CORNER OF LOT 5 AND THE S.E. CORNER OF LOT 6 WERE THEN COMPUTED AT THE INTERSECTION OF RECORD BEARINGS. THE N.W. AND S.W. CORNERS OF LOT 5 WERE ESTABLISHED AT PROPORTIONATE POSITIONS. THE S.W. CORNER OF LOT 6 WAS COMPUTED AT A PROPORTIONATE POSITION AND THEN THE 30 FOOT EXCEPTION FROM LOT 4 WAS ESTABLISHED PARALLEL TO THE WEST LINE OF LOT 6 AS PER DEED DESCRIPTION. MONUMENTS FOUND NEAR THE N.E. AND THE N.W. CORNERS OF LOT 5 AND THE N.W. AND S.W. CORNERS OF THE 30 FOOT EXCEPTION TO LOT 4 WERE NOT ACCEPTED AS PROPERTY CORNERS SINCE THEY WERE OUT OF POSITION AND NOT OF RECORD.

THIS SURVEY WAS PERFORMED BY KRIS DE GROOT, P.L.S. AND GREG DAIGLE USING A NIKON NTD-4, WITH COMPUTATION BY K. DE GROOT, AND DRAFTING BY GLENN BAUGHMAN.