

FILED

DEC 7 1988

RESURVEY OF LINE BETWEEN SEC.
 31 & 32, T30S, R3W, W. M.

COUNTY SURVEYOR
 DOUGLAS COUNTY, ORE.

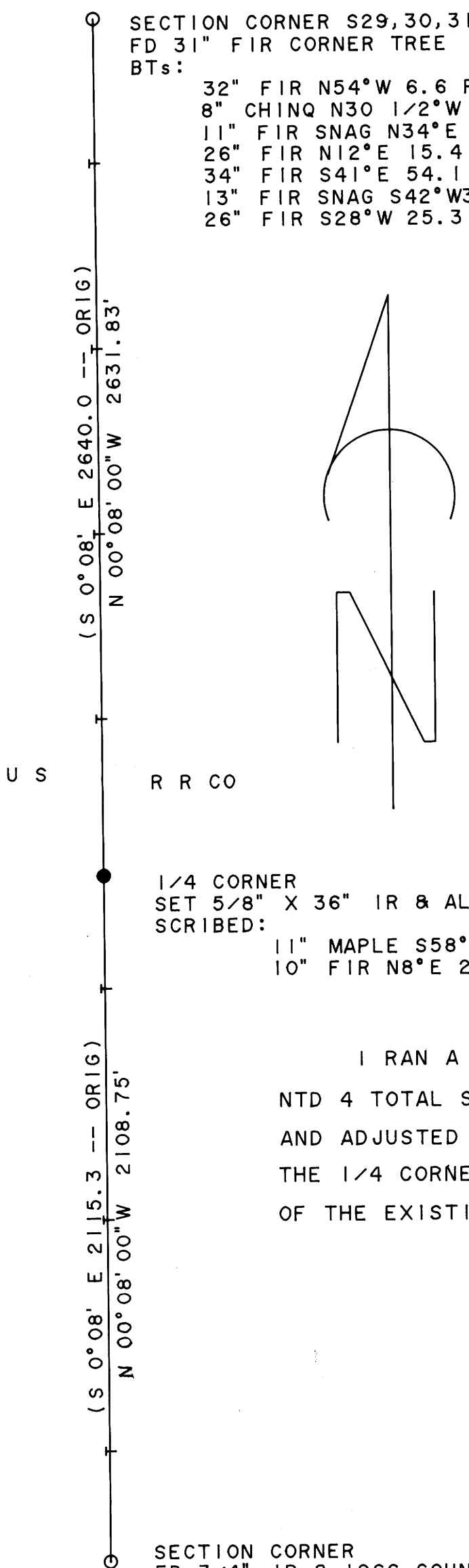
SECTION CORNER S29,30,31,32
 FD 31" FIR CORNER TREE
 BTs:

FOR ROSEBURG RESOURCES CO.

- 32" FIR N54°W 6.6 ROTTEN
- 8" CHINQ N30 1/2°W 24.5 SCRIBE VISIBLE
- 11" FIR SNAG N34°E 14.5 SCRIBE VISIBLE
- 26" FIR N12°E 15.4 SCRIBE VISIBLE
- 34" FIR S41°E 54.1 HEALED
- 13" FIR SNAG S42°W 32.0 HEALED
- 26" FIR S28°W 25.3 SCRIBE VISIBLE

NOV. 21, 1988

SCALE: 1" = 400'



LEGEND

- Monument found as noted
- Set IR & alum cap marked R R Co, LS 498
- Section or property line
- - - Subdivision or calculated line
- ⊥ Line referenced to aluminum tags
- () Record data

BEARING BASED ON ORIGINAL SURVEY

1/4 CORNER
 SET 5/8" X 36" IR & AL CAP MARKED 1/4 S31/32
 SCRIBED:
 11" MAPLE S58°E 15.2 "1/4 S BT"
 10" FIR N8°E 28.1 "1/4 S BT"

I RAN A CLOSED TRAVERSE IN SECTION 32 USING A NIKON
 NTD 4 TOTAL STATION. I ACHIEVED A PRECISION OF 1:15720
 AND ADJUSTED THE TRAVERSE BY THE TRANSIT METHOD. I SET
 THE 1/4 CORNER BY SINGLE PROPORTION BASED ON THE LOCATION
 OF THE EXISTING MONUMENTS.

HOWARD W. JOHNSTONE
 P. O. BOX 1088
 ROSEBURG, OREGON

SECTION CORNER
 FD 3/4" IP & 1966 COUNTY BCIP MARKED $\frac{31}{32}$
 BTs:
 11" LAUREL N58°W 19.0
 30" LAUREL N88°E 47.0 HEALED
 32" FIR S72°E 29.9 SCRIBE VISIBLE
 12" LAUREL S16°W 27.2 SCRIBE VISIBLE

REGISTERED
 PROFESSIONAL
 LAND SURVEYOR

Howard W. Johnstone

OREGON
 MAY 13, 1999
 HOWARD W. JOHNSTONE
 498