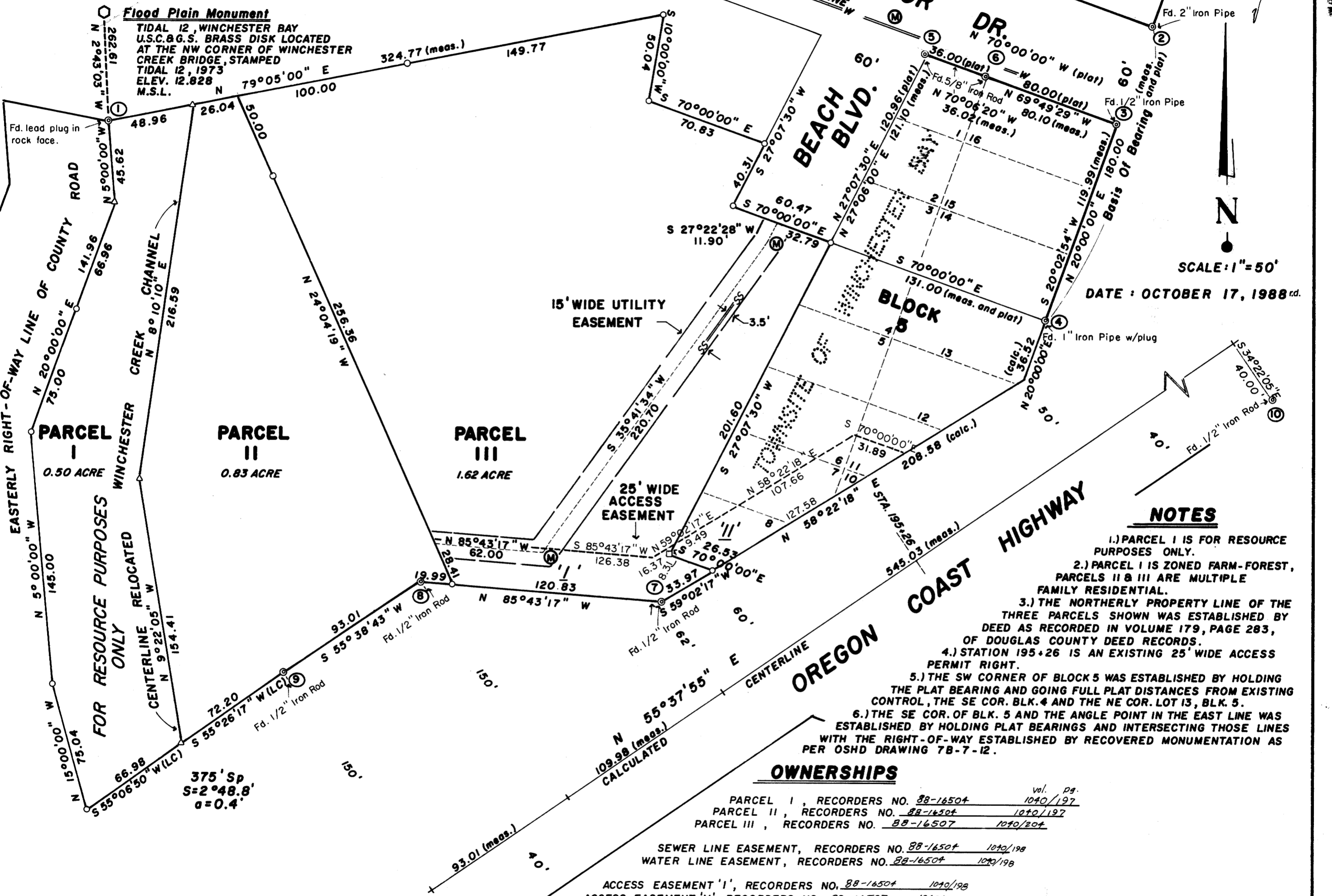


**FINAL
MAJOR LAND PARTITION
A PORTION OF THE NE 1/4 OF THE SW 1/4
SECTION 7, T. 22 S., R. 12 W., W.M.
DOUGLAS COUNTY, OREGON**

FILED
NOV 29 1988
COUNTY SURVEYOR
DOUGLAS COUNTY, OREGON



SCALE: 1" = 50'
DATE: OCTOBER 17, 1988 rd.

NOTES

- 1.) PARCEL I IS FOR RESOURCE PURPOSES ONLY.
- 2.) PARCEL I IS ZONED FARM-FOREST, PARCELS II & III ARE MULTIPLE FAMILY RESIDENTIAL.
- 3.) THE NORTHERLY PROPERTY LINE OF THE THREE PARCELS SHOWN WAS ESTABLISHED BY DEED AS RECORDED IN VOLUME 179, PAGE 283, OF DOUGLAS COUNTY DEED RECORDS.
- 4.) STATION 195+26 IS AN EXISTING 25' WIDE ACCESS PERMIT RIGHT.
- 5.) THE SW CORNER OF BLOCK 5 WAS ESTABLISHED BY HOLDING THE PLAT BEARING AND GOING FULL PLAT DISTANCES FROM EXISTING CONTROL, THE SE COR. BLK. 4 AND THE NE COR. LOT 13, BLK. 5.
- 6.) THE SE COR. OF BLK. 5 AND THE ANGLE POINT IN THE EAST LINE WAS ESTABLISHED BY HOLDING PLAT BEARINGS AND INTERSECTING THOSE LINES WITH THE RIGHT-OF-WAY ESTABLISHED BY RECOVERED MONUMENTATION AS PER OSHD DRAWING 7B-7-12.

OWNERSHIPS

	vol.	pg.
PARCEL I, RECORDERS NO. 88-16504	1040	197
PARCEL II, RECORDERS NO. 88-16504	1040	197
PARCEL III, RECORDERS NO. 88-16507	1040	204

SEWER LINE EASEMENT, RECORDERS NO. 88-16504 1040/198
 WATER LINE EASEMENT, RECORDERS NO. 88-16504 1040/198
 ACCESS EASEMENT 'I', RECORDERS NO. 88-16504 1040/198
 ACCESS EASEMENT 'II', RECORDERS NO. 88-16507 1040/204

LEGEND

- SET 5/8" x 30" IRON ROD W/PLASTIC CAP MARKED HGE. INC. SET LEVEL WITH GROUND.
- ⊙ FOUND MONUMENT, SEE CORNER NOTES SHEET 2
- CORNER NO., SEE CORNER NOTES SHEET 2
- SET 100 d/nail
- △ INACCESSIBLE POINT

**COUNTY SURVEYORS FILE DATA
DO NOT REMOVE FROM OFFICE**

**REGISTERED
PROFESSIONAL
LAND SURVEYOR**

Russ S. Dodge

OREGON
FEBRUARY 14, 1988
RUSS S. DODGE
2128