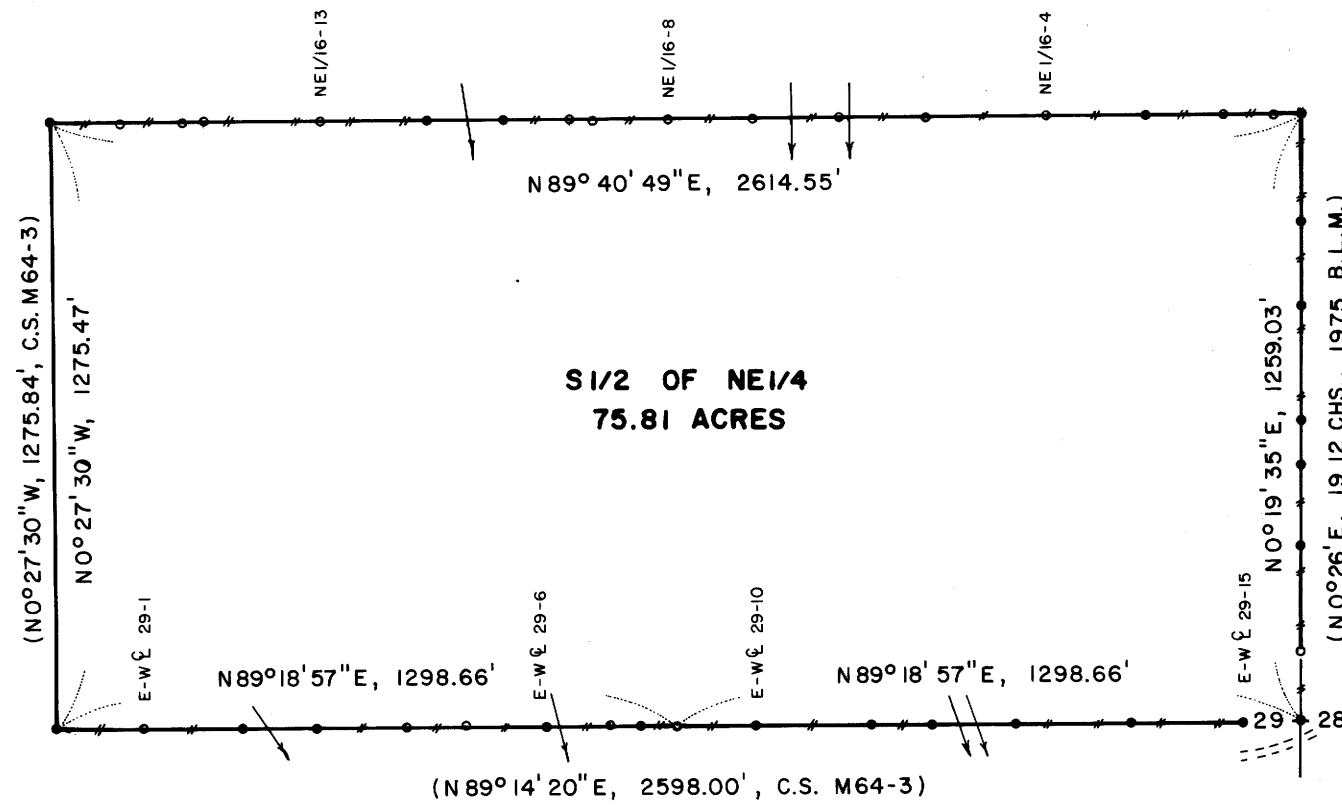


C.N. 1/16 CORNER SECTION 29

FD. 5/8" IRON PIN SET IN C.S. M64-3
10" FIR, S31°W, 8.4' (SCAR VIS.), 1977 B.T.
40" FIR, N16°E, 6.2' (SCRIBE VIS.), 1977 B.T.

NORTH 1/16 CORNER SECTION 29

FD. 1975 B.L.M. BRASS CAP
10" W. FIR, S82°E, 8.6' (SCRIBE VIS.), 1975 B.T.
8" FIR, S35°W, 31.5' (SCAR VIS.), 1975 B.T.



CENTER 1/4 CORNER SECTION 29

FD. 5/8" IRON PIN SET IN C.S. M64-3
16" FIR, S48°W, 18.4' (SCAR VIS.), 1977 B.T.
30" CEDAR, S45°E, 19.8' (SCRIBE VIS.), 1977 B.T.

EAST 1/4 CORNER SECTION 29

FD. 1957 DOUGLAS COUNTY BRASS CAP
24" FIR STUMP, N83°E, 13.5' (NO MARKS), 1936 B.T.
20" FIR, N76°W, 45.3' (SCAR VIS.), 1957 B.T.
8" MADRONE, N28°E, 23.0' (SCRIBE VIS.), 1975 B.T.

C.E. 1/16 CORNER SECTION 29

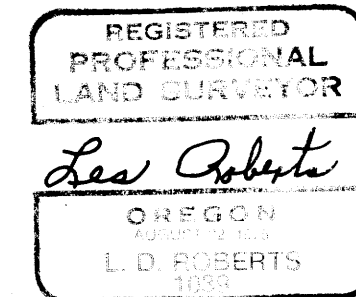
SET 3/4" x 36" ALUMINUM ROD WITH 3/4" CAP.
(BURIED PURPLE M.M. UNDER 36" ALUM. ROD)
10" FIR, N28°E, 9.7' (SCRIBED/PAINTED RED)
10" FIR, S27°E, 9.6' (SCRIBED/PAINTED RED)

SURVEY FOR
INTERNATIONAL PAPER COMPANY
IN
1/2 OF NE 1/4 SECTION 29, T28S, R8W
DOUGLAS COUNTY, OREGON
BY
ROBERTS SURVEYING INC.
29 WEST 29TH STREET
EUGENE, OREGON 97405

MARCH 27, 1989
SCALE 1" = 400'

LEGEND

- CORNERS FOUND AND USED FOR CONTROL
- CORNERS SET, 5/8" ALUMINUM RODS WITH 3/4" ALUMINUM CAPS. CAPS STAMPED S-T-R, DATE AND P.L.S. 1039.
- LINES MARKED AND BLAZED THIS SURVEY
- () DATA OF RECORD, 1975 B.L.M. SURVEY AND C.S. M64-3
- (M.M.) INDICATES LOCATION OF BURIED MAGNETIC MARKERS. MARKERS ARE FLUORESCENT ORANGE IN COLOR AND ARE BURIED, 12" TO 18" DEEP, ALONG LINE AS SHOWN.
- BASIS OF BEARING, WEST LINE 1/2 OF NE 1/4 FROM C.S. M64-3
- DISTANCES TO B.T.'S ARE CENTER MEASURE
- ALL NEW B.T.'S ARE SCRIBED AND HAVE A BRASS WASHER STAMPED "P.L.S. 1039" NAILED TO LOWER BLAZE. SCRIBED BLAZES ARE PAINTED RED.
- ALL NEW B.T.'S HAVE A 6" STEEL SPIKE DRIVEN INTO THE CENTER OF THE TREE TO SERVE AS A CHAINING POINT FOR MEASURED DISTANCES.



NARRATIVE, THE PURPOSE OF THIS SURVEY IS TO POST AND BLAZE THE SOUTH, EAST AND NORTH BOUNDARIES OF THE 1/2 OF THE NE 1/4 SECTION 29 AND ALSO TO ESTABLISH THE C.E. 1/16 CORNER. ALL CONTROLLING CORNERS WERE FOUND IN THE FIELD AS SHOWN. A CLOSED MEANDER, WILD T-16 THEODOLITE AND A DI-4L, E.D.M. TRAVERSE WAS RUN AROUND THE 1/2 OF THE NE 1/4 SECTION 29. OFFSETS WERE COMPUTED FROM THIS MEANDER TRAVERSE TO THE TRUE PROPERTY LINE. PROPERTY LINES WERE MARKED WITH RED PAINTED BLAZES, YELLOW INTERNATIONAL PAPER COMPANY BOUNDARY LINE DECALS ATTACHED TO 60" ALUMINUM POSTS AND FLUORESCENT ORANGE MAGNETIC MARKERS, ALUMINUM POSTS AND BURIED MAGNETIC MARKERS ARE REFERENCED BY A 4" x 6" ALUMINUM BOUNDARY LINE TAG NAILED TO A NEARBY TREE. TAG NOTES BEARING AND DISTANCE FROM TREE TO ALUMINUM POST OR BURIED MAGNETIC MARKER. THE C.E. 1/16 CORNER WAS SET HALFWAY BETWEEN THE CENTER 1/4 CORNER AND THE EAST 1/4 CORNER AS SHOWN.

LOCATION OF BURIED MAGNETIC MARKERS					
C. 1/4 COR.	0'	EAST (METAL POST)	E 29-4	619'	NORTH (M.M. & AL. POST)
E-W 29-1	192'	EAST (M.M. & AL. POST)	E 29-5	861'	NORTH (M.M. & AL. POST)
E-W 29-2	398'	EAST (M.M. & AL. POST)	E 29-6	1041'	NORTH (M.M. & AL. POST)
E-W 29-3	551'	EAST (M.M. & AL. POST)	N. 1/16 COR.	1259'	NORTH (AL. POST)
E-W 29-4	735'	EAST (M.M. & AL. POST)	NE 1/16-1	56'	WEST (M.M.)
E-W 29-5	858'	EAST (M.M.)	NE 1/16-2	159'	WEST (M.M. & AL. POST)
E-W 29-6	1028'	EAST (M.M. & AL. POST)	NE 1/16-3	323'	WEST (M.M. & AL. POST)
E-W 29-7	1159'	EAST (M.M. & AL. POST)	NE 1/16-4	520'	WEST (M.M. & AL. POST)
E-W 29-8	1223'	EAST (M.M.)	NE 1/16-5	778'	WEST (M.M. & AL. POST)
C.E. 1/16	1299'	EAST (M.M. & AL. POST)	NE 1/16-6	960'	WEST (M.M. & AL. POST)
E-W 29-10	1463'	EAST (M.M. & AL. POST)	NE 1/16-7	1142'	WEST (M.M. & AL. POST)
E-W 29-11	1704'	EAST (M.M. & AL. POST)	NE 1/16-8	1316'	WEST (M.M. & AL. POST)
E-W 29-12	1831'	EAST (M.M.)	NE 1/16-9	1474'	WEST (M.M.)
E-W 29-13	2005'	EAST (M.M. & AL. POST)	NE 1/16-10	1519'	WEST (M.M. & AL. POST)
E-W 29-14	2242'	EAST (M.M. & AL. POST)	NE 1/16-11	1662'	WEST (M.M.)
E-W 29-15	2478'	EAST (M.M. & AL. POST)	NE 1/16-12	1818'	WEST (M.M. & AL. POST)
E. 1/4 COR.	2597'	EAST (AL. POST)	NE 1/16-13	2042'	WEST (M.M. & AL. POST)
E 29-1	142'	NORTH (M.M. & AL. POST)	NE 1/16-14	2287'	WEST (M.M.)
E 29-2	360'	NORTH (M.M. & AL. POST)	NE 1/16-15	2330'	WEST (M.M. & AL. POST)
E 29-3	530'	NORTH (M.M.)	NE 1/16-16	2457'	WEST (M.M.)
E 29-4	619'	NORTH (M.M. & AL. POST)	C.N. 1/16	2614'	WEST (METAL POST)

C.S. File No. 63191
MAP FILE M167-62

C.S. File No. 63191
MAP FILE M167-62