

SURVEY FOR  
INTERNATIONAL PAPER COMPANY  
IN  
E1/2 SE1/4 SECTION 35, T22S, R12W  
DOUGLAS COUNTY, OREGON  
BY  
ROBERTS SURVEYING INC.  
29 WEST 29TH STREET  
EUGENE, OREGON 97405

FEBRUARY 24, 1989  
SCALE 1" = 400'

C.S. File No. 63191  
MAP FILE M107-66

**EAST 1/4 CORNER SECTION 35 ONLY**

FD. 1985 OREGON STATE BOARD OF FORESTRY BRASS CAP  
CORNER NOT TIED ON THIS SURVEY

**WEST 1/4 CORNER SECTION 36 ONLY**

CORNER FALLS IN MURPHY CREEK. NO MONUMENT FOUND.

**WITNESS CORNER TO WEST 1/4 CORNER SECTION 36**

FD. 1974 OREGON STATE BOARD OF FORESTRY BRASS CAP  
SET IN C.S. M55-73. TRUE CORNER BEARS N5°00'W, 54.5'  
18" ALDER, S34°E, 169.5' (SCAR VIS.), 1974 B.T.  
24" ALDER, N39°E, 72.5' (SCAR VIS.), 1974 B.T.

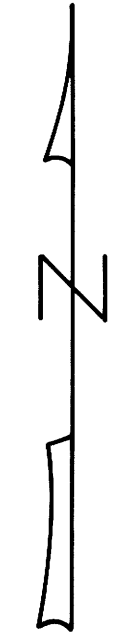
**SOUTH 1/16 CORNER SECTION 36**

FD. 1986 OREGON STATE BOARD OF FORESTRY BRASS CAP  
SET IN C.S. M103-42  
10" ALDER, N67°E, 42.3' (BARK SCRIBED), 1986 B.T.  
S.W. MAPLE B.T. HAS BLOWN OVER.

**S.W. CORNER SECTION 36**

FD. 1985 OREGON STATE BOARD OF FORESTRY BRASS CAP.  
CORNER NOT TIED ON THIS SURVEY

**NARRATIVE**, THE PURPOSE OF THIS SURVEY IS TO MONUMENT AND DESCRIBE A SMALL PARCEL OF LAND THAT IS TO BE TRADED TO THE OREGON STATE DEPARTMENT OF FORESTRY. PROPERTY CORNER 1 WAS SET ON THE WEST BOUNDARY OF SECTION 36, S4°19'53"E, 80.49 FEET (ARBITRARY DISTANCE) FROM THE SOUTH 1/16 CORNER OF SECTION 36. PROPERTY CORNERS 2, 3, 4 AND 5 WERE SET ALONG THE TOP OF A SPUR RIDGE. PROPERTY CORNER 6 WAS ARBITRARY SET AT A POINT MARKED IN THE FIELD BY INTERNATIONAL PAPER COMPANY PERSONNEL. AFTER ALL CORNERS WERE SET, A CLOSED MEANDER, WILD T-16 THEODOLITE AND A DI-4L, E.D.M. TRAVERSE WAS RUN THRU THESE POINTS WITH THE RESULTING BEARINGS AND DISTANCES AS SHOWN IN THE TABLE BELOW. OFFSETS WERE COMPUTED FROM THIS MEANDER TRAVERSE TO THE TRUE PROPERTY LINE. PROPERTY LINES WERE MARKED WITH RED PAINTED BLAZES, YELLOW INTERNATIONAL PAPER BOUNDARY LINE DECALS ATTACHED TO 60" ALUMINUM POSTS AND FLUORESCENT ORANGE MAGNETIC MARKERS. ALUMINUM POSTS AND BURIED MAGNETIC MARKERS ARE REFERENCED BY A 4" x 6" ALUMINUM BOUNDARY LINE TAG NAILED TO A NEARBY TREE. TAG NOTES BEARING AND DISTANCE FROM TREE TO ALUMINUM POST OR BURIED MAGNETIC MARKER.



**PROPERTY CORNER NO. 1**

SET 3/4" x 36" ALUMINUM ROD WITH 3/4" CAP.  
(BURIED PURPLE M.M. UNDER 36" ALUM. ROD)  
40" FIR, S17°E, 20.9' (SCRIBED/PAINTED RED)

**PROPERTY CORNER NO. 2**

SET 3/4" x 36" ALUMINUM ROD WITH 3/4" CAP.  
(BURIED PURPLE M.M. UNDER 36" ALUM. ROD)  
15" FIR, S86°E, 15.3' (SCRIBED/PAINTED RED)  
18" MYRTLE, N13°E, 14.4' (SCRIBED/PAINTED RED)

**PROPERTY CORNER NO. 3**

SET 3/4" x 36" ALUMINUM ROD WITH 3/4" CAP.  
(BURIED PURPLE M.M. UNDER 36" ALUM. ROD)  
12" MYRTLE, S64°W, 18.2' (SCRIBED/PAINTED RED)  
13" ALDER, N16°W, 15.5' (SCRIBED/PAINTED RED)

**PROPERTY CORNER NO. 4**

SET 3/4" x 36" ALUMINUM ROD WITH 3/4" CAP.  
(BURIED PURPLE M.M. UNDER 36" ALUM. ROD)  
13" ALDER, N12°E, 25.9' (SCRIBED/PAINTED RED)  
15" MYRTLE, S42°E, 6.0' (SCRIBED/PAINTED RED)

**PROPERTY CORNER NO. 5**

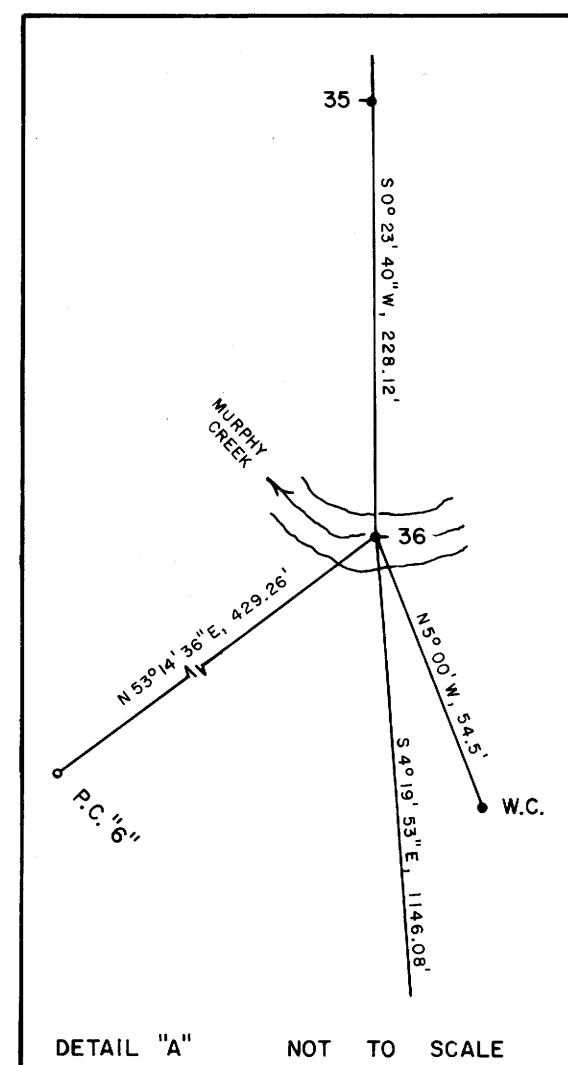
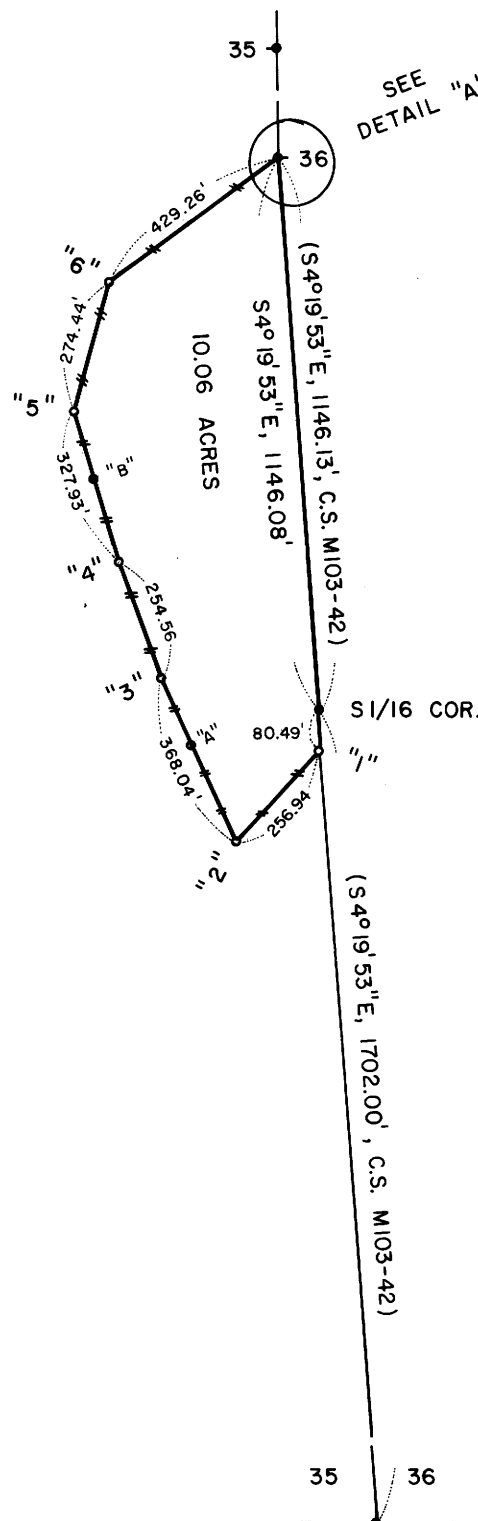
SET 3/4" x 36" ALUMINUM ROD WITH 3/4" CAP.  
16" FIR, N26°E, 7.8' (SCRIBED/PAINTED RED)  
17" FIR, S84°E, 5.3' (SCRIBED/PAINTED RED)  
(BURIED PURPLE M.M. UNDER 36" ALUM. ROD)

**PROPERTY CORNER NO. 6**

SET 3/4" x 36" ALUMINUM ROD WITH 3/4" CAP.  
(BURIED PURPLE M.M. UNDER 36" ALUM. ROD)  
18" FIR, S27°E, 31.4' (SCRIBED/PAINTED RED)

**LEGEND**

- CORNERS FOUND AND USED FOR CONTROL
- CORNERS SET, 3/4" ALUMINUM RODS WITH 3/4" ALUMINUM CAPS. CAPS STAMPED S-T-R, DATE AND P.L.S. 1039.
- LINES MARKED AND BLAZED THIS SURVEY.
- ( ) DATA OF RECORD, 1910 G.L.O. SURVEY, C.S. M55-73 AND C.S. M103-42.
- (M.M.) INDICATES LOCATION OF BURIED MAGNETIC MARKERS. MARKERS ARE FLUORESCENT ORANGE IN COLOR AND ARE BURIED, 12" TO 18" DEEP, ALONG LINE AS SHOWN.
- BASIS OF BEARING, C.S. M103-42
- DISTANCES TO B.T.'S ARE CENTER MEASURE
- ALL NEW B.T.'S ARE SCRIBED AND HAVE A BRASS WASHER STAMPED "P.L.S. 1039" NAILED TO LOWER BLAZE. SCRIBED BLAZES ARE PAINTED RED.
- ALL NEW B.T.'S HAVE A 6" STEEL SPIKE DRIVEN INTO THE CENTER OF THE TREE TO SERVE AS A CHAINING POINT FOR MEASURED DISTANCES.



LOCATION OF BURIED MAGNETIC MARKERS		
S. 1/16 COR.	(AL. POST)	
	S 4° 19' 53" E , 80.49'	
P.C. "1"	S 43° 04' 05" W , 256.94'	(M.M. & AL. POST)
P.C. "2"	N 24° 33' 21" W , 223.30'	(M.M. & AL. POST)
P.O.T. "A"	N 24° 33' 21" W , 144.74'	(M.M. & AL. POST)
P.C. "3"	N 19° 41' 23" W , 254.56'	(M.M. & AL. POST)
P.C. "4"	N 16° 32' 39" W , 188.43'	(M.M. & AL. POST)
P.O.T. "B"	N 16° 32' 39" W , 139.50'	(M.M. & AL. POST)
P.C. "5"	N 14° 59' 00" E , 274.44'	(M.M. & AL. POST)
P.C. "6"	N 53° 14' 36" E , 429.26'	(M.M. & AL. POST)
W. 1/4 COR.	S 4° 19' 53" E , 1146.08'	(CORNER IN CREEK)
S. 1/16 COR.	(AL. POST)	

REGISTERED  
PROFESSIONAL  
LAND SURVEYOR  
*Lee Roberts*  
OREGON  
L. D. ROBERTS  
1039

C.S. File No. 63191  
MAP FILE M107-66