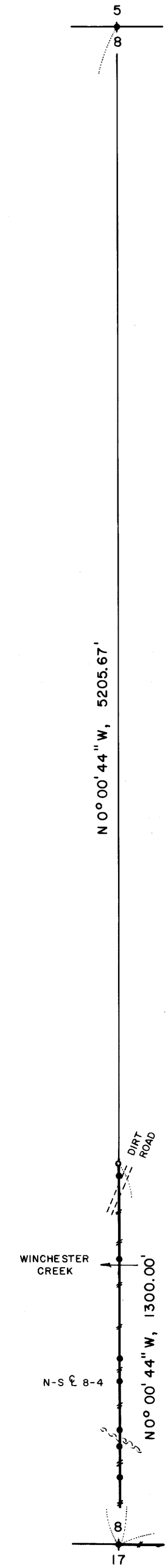


**NORTH 1/4 CORNER SECTION 8**

FD. 1983 IRON PIPE AND BRASS CAP SET  
IN C.S. M94-34  
20" SPRUCE, N51°E, 11.9' (SCRIBE VIS.), 1983 B.T.  
22" FIR, S20°E, 24.2' (SCRIBE VIS.), 1983 B.T.



**NARRATIVE**, THE PURPOSE OF THIS SURVEY IS TO POST AND BLAZE THE EAST 1/2 OF THE SOUTH LINE OF SECTION 8 AND TO POST AND BLAZE THE N-S  $\frac{1}{2}$  OF SECTION 8, NORTHERLY, TO ITS INTERSECTION WITH AN OLD DIRT ROAD. THIS SURVEY WAS STARTED IN THE SUMMER OF 1987 BUT BECAUSE OF A PENDING "PROPERTY TRADE", WAS NOT FILED UNTIL THIS TIME. ALL CONTROLLING CORNERS WERE FOUND IN THE FIELD AS SHOWN. A CLOSED MEANDER, WILD T-16 THEODOLITE AND A DI-4L, E.D.M. TRAVERSE WAS RUN BETWEEN THESE CORNERS AND USED FOR CONTROL. THE EAST 1/16 CORNER BETWEEN SECTIONS 8 AND 17 WAS SET HALFWAY BETWEEN THE SOUTH 1/4 CORNER AND THE S.E. CORNER OF SECTION 8. THE P.O.T. ON THE N-S  $\frac{1}{2}$  OF SECTION 8 WAS SET 1300.00 FEET NORTHERLY, ARBITRARY DISTANCE, OF THE SOUTH 1/4 CORNER OF SECTION 8. A CLOSED MEANDER, WILD T-16 THEODOLITE AND A DI-4L, E.D.M. TRAVERSE WAS RUN ALONG ALL LINES TO BE BLAZED AND POSTED. OFFSETS WERE COMPUTED FROM THIS MEANDER TRAVERSE TO THE TRUE PROPERTY LINE. PROPERTY LINES WERE MARKED WITH RED PAINTED BLAZES, RED RIBBON, YELLOW INTERNATIONAL PAPER BOUNDARY LINE DECALS ATTACHED TO 60" ALUMINUM POSTS AND FLUORESCENT ORANGE MAGNETIC MARKERS. ALUMINUM POSTS AND BURIED MAGNETIC MARKERS ARE REFERENCED BY A 4" x 6" ALUMINUM BOUNDARY LINE TAG NAILED TO A NEARBY TREE. TAG NOTES BEARING AND DISTANCE FROM TREE TO ALUMINUM POST OR BURIED MAGNETIC MARKER.

SURVEY FOR  
INTERNATIONAL PAPER COMPANY  
IN  
SE 1/4 SECTION 8, T22S, R12W  
DOUGLAS COUNTY, OREGON  
BY  
ROBERTS SURVEYING INC.  
29 WEST 29TH STREET  
EUGENE, OREGON 97405

JANUARY 20, 1989  
SCALE 1" = 400'

**LEGEND**

- CORNERS FOUND AND USED FOR CONTROL
- CORNERS SET, 5/8" ALUMINUM RODS WITH 3/4" ALUMINUM CAPS. CAPS STAMPED S-T-R, DATE AND P.L.S. 1039.
- LINES MARKED AND BLAZED THIS SURVEY
- ( ) DATA OF RECORD, 1857 G.L.O. SURVEY, C.S. M94-34 AND C.S. M105-28
- (M.M.) INDICATES LOCATION OF BURIED MAGNETIC MARKERS. MARKERS ARE FLUORESCENT ORANGE IN COLOR AND ARE BURIED, 12" TO 18" DEEP, ALONG LINE AS SHOWN.
- BASIS OF BEARING, SOUTH 1/2 OF EAST LINE SECTION 8 FROM C.S. M105-28
- DISTANCES TO B.T.'S ARE CENTER MEASURE
- ALL NEW B.T.'S ARE SCRIBED AND HAVE AN ALUMINUM WASHER STAMPED "P.L.S. 1039" NAILED TO LOWER BLAZE. SCRIBED BLAZES ARE PAINTED RED.
- ALL NEW B.T.'S HAVE A 8" STEEL SPIKE DRIVEN INTO THE CENTER OF THE TREE TO SERVE AS A CHAINING POINT FOR MEASURED DISTANCES.

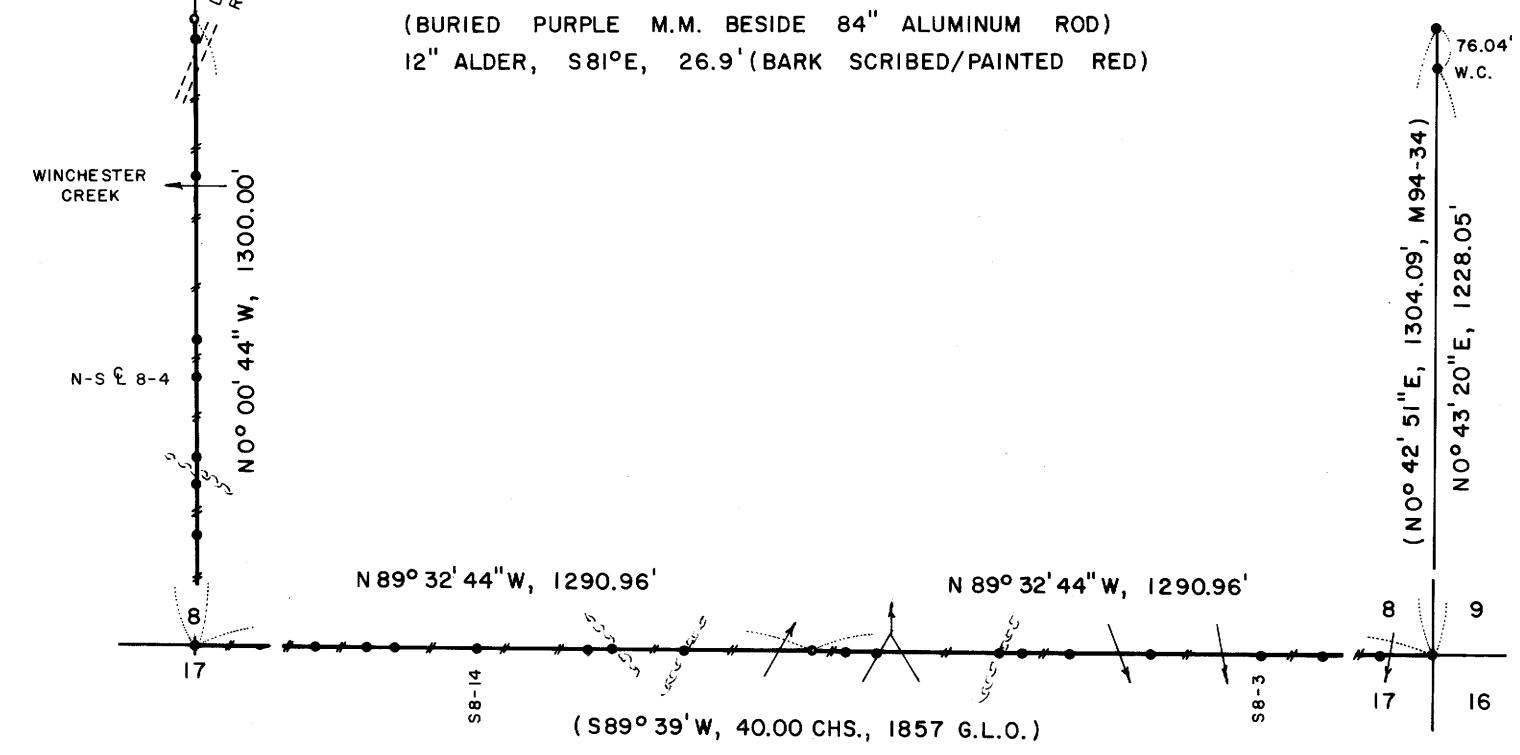
REGISTERED  
PROFESSIONAL  
LAND SURVEYOR  
*Les Roberts*  
OREGON  
AUGUST 29, 1975  
L. D. ROBERTS  
1039

**P.O.T. ON N-S  $\frac{1}{2}$  SECTION 8**

SET 5/8" x 84" ALUMINUM ROD WITH 3/4" CAP.  
(BURIED PURPLE M.M. BESIDE 84" ALUMINUM ROD)  
12" ALDER, S81°E, 26.9' (BARK SCRIBED/PAINTED RED)

**SOUTH 1/16 CORNER SECTION 8**

FD. 1983 IRON PIPE AND BRASS CAP SET IN C.S. M94-34  
AND MARKED S 1/16 W.C., TRUE 1/16 CORNER BEARS N 0°  
43' 20"E, 76.04'.  
13" HEMLOCK, N74°W, 45.4' (SCRIBE VIS.), 1983 B.T.  
17" ALDER, N19°E, 14.5' (BARK SCRIBED), 1983 B.T.  
ALSO FOUND 60" ALUMINUM POST IN SWAMP FOR  
TRUE SOUTH 1/16 CORNER.



**SOUTH 1/4 CORNER SECTION 8**

FD. 1982 DOUGLAS COUNTY BRASS CAP  
15" FIR, S53°W, 19.8' (SCAR VIS.), 1982 B.T.  
16" SPRUCE, S23°E, 27.5' (SCRIBE VIS.), 1982 B.T.  
22" SPRUCE, N68°E, 32.2' (SCAR VIS.), 1982 B.T.  
30" SPRUCE, N16°E, 17.5' (SCAR VIS.), 1982 B.T.

**EAST 1/16 CORNER SECTION 8**

SET 5/8" x 36" ALUMINUM ROD WITH 3/4" CAP.  
(BURIED PURPLE M.M. UNDER 36" ALUM. ROD)  
12" SPRUCE, S85°E, 15.1' (SCRIBED/PAINTED RED)  
21" SPRUCE, N34°W, 23.8' (SCRIBED/PAINTED RED)

**S.E. CORNER SECTION 8**

FD. 1982 DOUGLAS COUNTY BRASS CAP.  
36" SPRUCE STUMP, N07°E, 47.5' (SCRIBE VIS.), 1857 B.T.  
14" CEDAR, N31°W, 14.7' (SCRIBE VIS.), 1982 B.T.  
14" CEDAR, S73°W, 22.4' (SCRIBE VIS.), 1982 B.T.  
15" CEDAR, S36°E, 18.7' (SCRIBE VIS.), 1982 B.T.  
19" SPRUCE, N85°E, 22.7' (SCRIBE VIS.), 1982 B.T.

LOCATION OF BURIED MAGNETIC MARKERS			
S.E. COR.	0'	WEST	(AL. POST)
S8-1	108'	WEST	(M.M. & AL. POST)
S8-2	228'	WEST	(M.M.)
S8-3	353'	WEST	(M.M. & AL. POST)
S8-4	589'	WEST	(M.M. & AL. POST)
S8-5	753'	WEST	(M.M.)
S8-6	852'	WEST	(M.M.)
S8-7	900'	WEST	(M.M. & AL. POST)
S8-8	1159'	WEST	(M.M. & AL. POST)
S8-9	1217'	WEST	(M.M.)
E. 1/16 COR.	1291'	WEST	(M.M. & AL. POST)
S8-11	1560'	WEST	(M.M. & AL. POST)
S8-12	1710'	WEST	(M.M. & AL. POST)
S8-13	1762'	WEST	(M.M.)
S8-14	1991'	WEST	(M.M. & AL. POST)
S8-15	2160'	WEST	(M.M. & AL. POST)
S8-16	2218'	WEST	(M.M.)
S8-17	2323'	WEST	(M.M. & AL. POST)
S. 1/4 COR.	2582'	WEST	(AL. POST)
N-S $\frac{1}{2}$ 8-1	223'	NORTH	(M.M. & AL. POST)
N-S $\frac{1}{2}$ 8-2	331'	NORTH	(M.M.)
N-S $\frac{1}{2}$ 8-3	390'	NORTH	(M.M. & AL. POST)
N-S $\frac{1}{2}$ 8-4	556'	NORTH	(M.M.)
N-S $\frac{1}{2}$ 8-5	635'	NORTH	(M.M. & AL. POST)
N-S $\frac{1}{2}$ 8-6	975'	NORTH	(M.M. & AL. POST)
N-S $\frac{1}{2}$ 8-7	1259'	NORTH	(M.M.)
MONUMENT	1300'	NORTH	(M.M. & AL. POST)

C.S. FILE 63/46  
M107-57

VIRGINIA :

THE SKETCH ON MY FIRST  
RESTORATION FORM IS WRONG.

MY B.T.'S WERE DRAWEN TO

THE SECTION ~~CORNER~~ **FILED** ~~CORNER~~ INSTEAD

OF THE WITNESS ~~CORNER~~ **OCT 21 1987** CORNER

COUNTY SURVEYOR  
DOUGLAS COUNTY, ORE.

LES <sup>CS</sup> 63/16