

COUNTY SURVEYORS FILE DATA
DO NOT REMOVE FROM OFFICE

FILED

MAR 3 1989

COUNTY SURVEYOR
DOUGLAS COUNTY, OREGON

NORTH 1/4 CORNER SECTION 5
FD. 1 1/4" IRON PIPE SET IN C.S. M51-65
26" SPRUCE SNAG, N38°W, 22.1' (SCRIBE VIS.), 1857 B.T.
17" ALDER SNAG, S71°W, 51.4' (SCRIBE VIS.), 1973 B.T.
16" SPRUCE, EAST, 33.6' (SCRIBE VIS.), 1986 B.T.
19" SPRUCE, N24°E, 24.0' (SCRIBE VIS.), 1986 B.T.

SURVEY FOR
INTERNATIONAL PAPER COMPANY
IN
SE 1/4 SECTION 5, T22S, R12W
DOUGLAS COUNTY, OREGON
BY
ROBERTS SURVEYING INC.
29 WEST 29TH STREET
EUGENE, OREGON 97405

JANUARY 30, 1989
SCALE 1" = 400'

NARRATIVE, THE PURPOSE OF THIS SURVEY IS TO POST AND BLAZE THE SOUTH 1/2 OF THE SOUTH 1/2 OF THE NORTH-SOUTH 1/2 OF SECTION 5 AND TO POST AND BLAZE THE EAST-WEST 1/2 OF THE SE 1/4, EASTERLY, TO ITS INTERSECTION WITH THE NORTHWESTERLY R/W LINE OF STATE HIGHWAY NO. 101. ALL CONTROLLING CORNERS WERE FOUND IN THE FIELD AS SHOWN. A CLOSED MEANDER, WILD T-16 THEODOLITE AND A DI-4L, E.D.M. TRAVERSE WAS RUN BETWEEN THESE CONTROLLING CORNERS AND USED FOR CONTROL. THE CENTER 1/4 CORNER WAS DETERMINED AT THE POINT OF INTERSECTION OF THE N-S AND E-W CENTERLINES OF SECTION 5. THE C.S. 1/16 CORNER, CORNER "B", WAS SET HALFWAY BETWEEN THE CENTER 1/4 CORNER AND THE SOUTH 1/4 CORNER AS SHOWN. THE STATE HIGHWAY R/W CORNER, CORNER "A", WAS SET AT THE POINT OF INTERSECTION OF THE E-W CENTERLINE OF THE SE 1/4 WITH THE NORTHWESTERLY R/W LINE OF STATE HIGHWAY NO. 101. A CLOSED MEANDER, WILD T-16 THEODOLITE AND A DI-4L, E.D.M. TRAVERSE WAS RUN ALONG ALL LINES TO BE BLAZED AND POSTED. OFFSETS WERE COMPUTED FROM THIS MEANDER TRAVERSE TO THE TRUE PROPERTY LINE. PROPERTY LINES WERE MARKED WITH RED PAINTED BLAZES, YELLOW INTERNATIONAL PAPER BOUNDARY LINE DECALS ATTACHED TO 60" ALUMINUM POSTS AND FLUORESCENT ORANGE MAGNETIC MARKERS. ALUMINUM POSTS AND BURIED MAGNETIC MARKERS ARE REFERENCED BY A 4" x 6" ALUMINUM BOUNDARY LINE TAG NAILED TO A NEARBY TREE. TAG NOTES BEARING AND DISTANCE FROM TREE TO ALUMINUM POST OR BURIED MAGNETIC MARKER.

WEST 1/4 CORNER SECTION 5
FD. 1 1/4" IRON PIPE SET IN C.S. M51-65
19" HEMLOCK STUMP, S45°E, 20.5' (SCRIBE VIS.), 1973 B.T.
29" HEMLOCK STUMP, S63°W, 16.3' (SCRIBE VIS.), 1973 B.T.

EAST 1/4 CORNER SECTION 5
FD. 1 1/4" IRON PIPE SET IN C.S. M51-65
48" FIR STUMP, S41°E, 18.1' (SCAR VIS.), 1857 B.T.
20" DOUBLE HEMLOCK, S43°W, 12.5' (SCRIBE VIS.), 1973 B.T.
28" HEMLOCK, S82°E, 17.4' (SCAR VIS.), 1973 B.T.

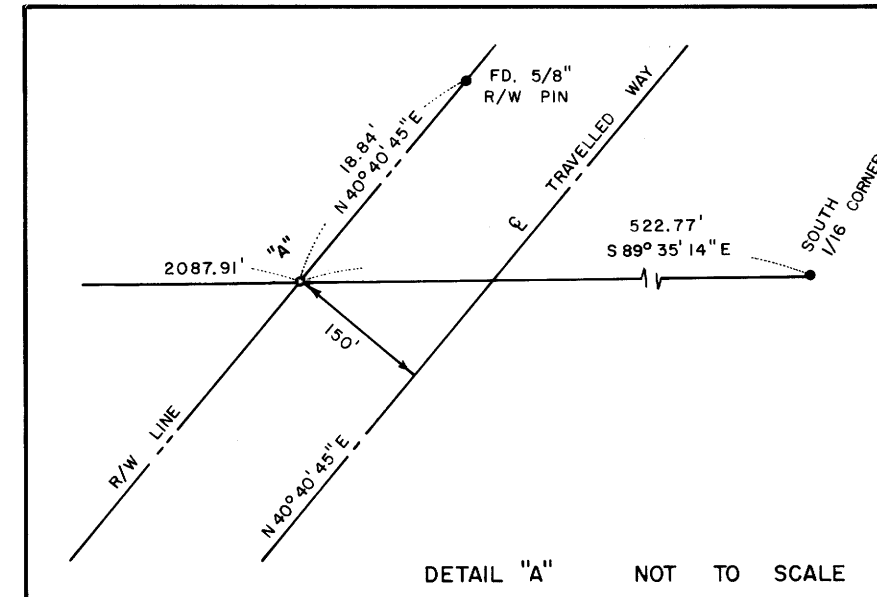
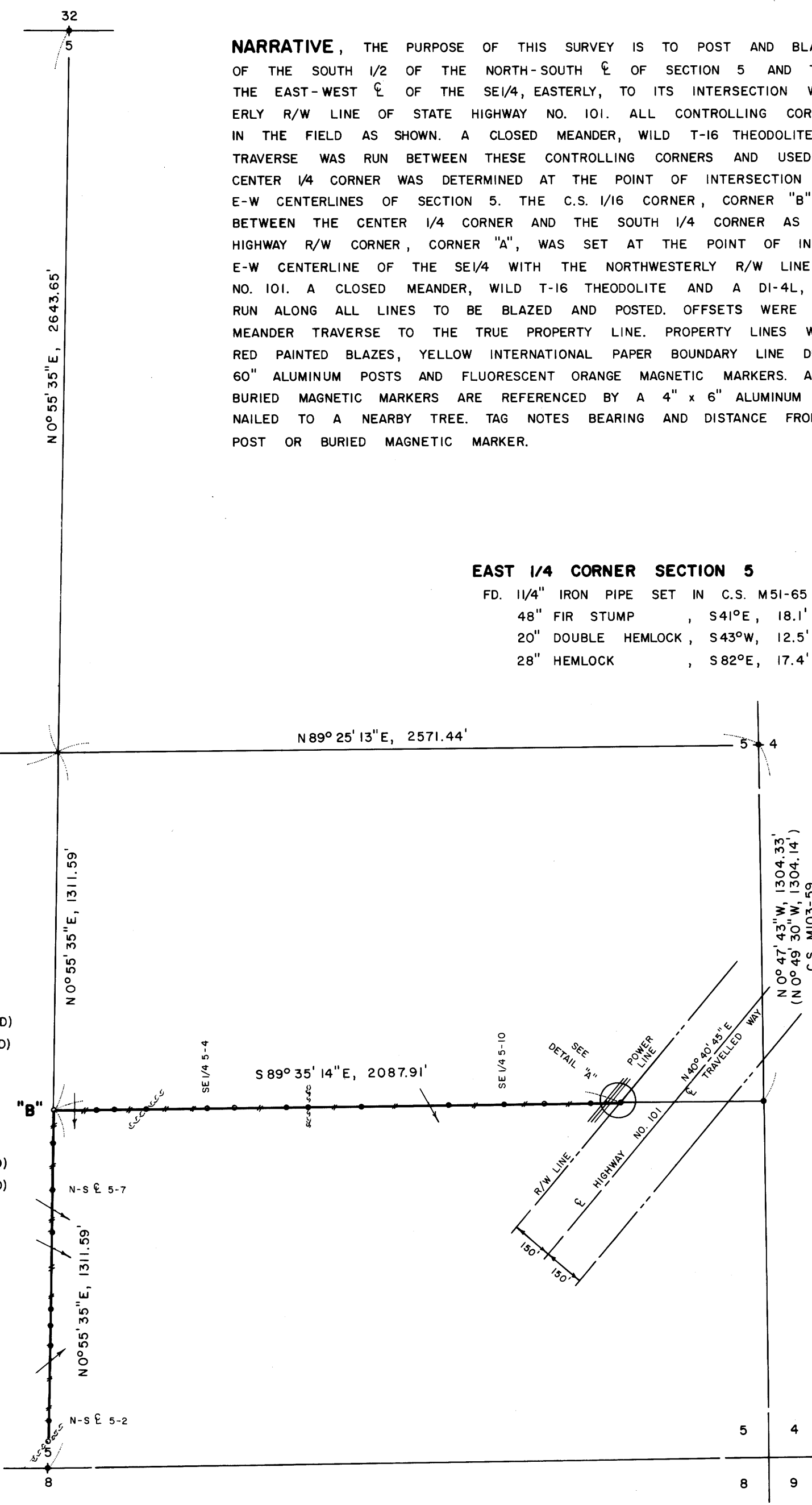
LEGEND

- CORNERS FOUND AND USED FOR CONTROL
- CORNERS SET, 5/8" ALUMINUM RODS WITH 3/4" ALUMINUM CAPS. CAPS STAMPED S-T-R, DATE AND P.L.S. 1039.
- LINES MARKED AND BLAZED THIS SURVEY
- () DATA OF RECORD, 1857 G.L.O. SURVEY AND C.S. M94-34
- (M.M.) INDICATES LOCATION OF BURIED MAGNETIC MARKERS. MARKERS ARE FLUORESCENT ORANGE IN COLOR AND ARE BURIED, 12" TO 18" DEEP, ALONG LINE AS SHOWN.
- BASIS OF BEARING, C.S. M105-28 RANDOM TRAVERSE POINTS ALONG HWY.
- DISTANCES TO B.T.'S ARE CENTER MEASURE
- ALL NEW B.T.'S ARE SCRIBED AND HAVE AN ALUMINUM WASHER STAMPED "P.L.S. 1039" NAILED TO LOWER BLAZE. SCRIBED BLAZES ARE PAINTED RED.
- ALL NEW B.T.'S HAVE A 8" STEEL SPIKE DRIVEN INTO THE CENTER OF THE TREE TO SERVE AS A CHAINING POINT FOR MEASURED DISTANCES.

"A" STATE HIGHWAY R/W CORNER
SET 3/4" x 36" ALUMINUM ROD WITH 3/4" CAP.
(BURIED PURPLE M.M. UNDER 36" ALUM. ROD)
12" HEMLOCK, S54°W, 11.8' (SCRIBED/PAINTED RED)
28" FIR, N20°W, 7.8' (SCRIBED/PAINTED RED)

"B" C.S. 1/16 CORNER SECTION 5
SET 3/4" x 36" ALUMINUM ROD WITH 3/4" CAP.
(BURIED PURPLE M.M. UNDER 36" ALUM. ROD)
17" HEMLOCK, S43°W, 24.8' (SCRIBED/PAINTED RED)
19" HEMLOCK, S49°E, 2.6' (SCRIBED/PAINTED RED)

SOUTH 1/16 CORNER SECTION 5
FD. 1987 INTERNATIONAL PAPER ALUMINUM ROD
AND CAP SET IN C.S. M103-59
12" HEMLOCK, N85°W, 6.2' (SCRIBE VIS.), 1987 B.T.
14" HEMLOCK, S55°E, 12.1' (SCRIBE VIS.), 1987 B.T.



SOUTH 1/4 CORNER SECTION 5
FD. 1983 IRON PIPE AND BRASS CAP SET
IN C.S. M-94-34
20" SPRUCE, N51°E, 11.9' (SCRIBE VIS.), 1983 B.T.
22" FIR, S20°E, 24.2' (SCRIBE VIS.), 1983 B.T.

LOCATION	OF	BURIED	MAGNETIC	MARKERS
S. 1/4 COR.	0'	NORTH	(AL. POST)	
N-S 1/2 5-1	92'	NORTH	(M.M.)	
N-S 1/2 5-2	169'	NORTH	(M.M. & AL. POST)	
N-S 1/2 5-3	444'	NORTH	(M.M. & AL. POST)	
N-S 1/2 5-4	518'	NORTH	(M.M.)	
N-S 1/2 5-5	581'	NORTH	(M.M. & AL. POST)	
N-S 1/2 5-6	864'	NORTH	(M.M. & AL. POST)	
N-S 1/2 5-7	1013'	NORTH	(M.M. & AL. POST)	
N-S 1/2 5-8	1188'	NORTH	(M.M.)	
C.S. 1/16 COR.	1312'	NORTH	(M.M. & AL. POST)	
SE 1/4 5-1	160'	EAST	(M.M. & AL. POST)	
SE 1/4 5-2	222'	EAST	(M.M.)	
SE 1/4 5-3	340'	EAST	(M.M. & AL. POST)	
SE 1/4 5-4	566'	EAST	(M.M. & AL. POST)	
SE 1/4 5-5	660'	EAST	(M.M. & AL. POST)	
SE 1/4 5-6	856'	EAST	(M.M.)	
SE 1/4 5-7	933'	EAST	(M.M. & AL. POST)	
SE 1/4 5-8	1131'	EAST	(M.M. & AL. POST)	
SE 1/4 5-9	1452'	EAST	(M.M. & AL. POST)	
SE 1/4 5-10	1657'	EAST	(M.M. & AL. POST)	
SE 1/4 5-11	1804'	EAST	(M.M. & AL. POST)	
SE 1/4 5-12	1970'	EAST	(M.M. & AL. POST)	
R/W COR.	2088'	EAST	(M.M. & AL. POST)	

C.S. File 63-14
Map File M107-56

VIRGINIA :

THE SKETCH ON MY FIRST
RESTORATION FORM IS WRONG.

MY B.T.'S WERE DRAWEN TO

THE SECTION ~~CORNER~~ **FILED** ~~CORNER~~ INSTEAD

OF THE WITNESS ~~CORNER~~ **OCT 21 1987** CORNER

COUNTY SURVEYOR
DOUGLAS COUNTY, ORE.

LES ^{CS}
63/16