

M107-548

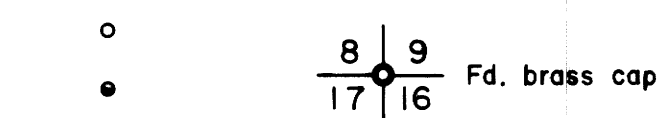
LEGEND

Corner found, 5/8" iron rod with aluminum cap unless noted

Corner computed, not set

Fence

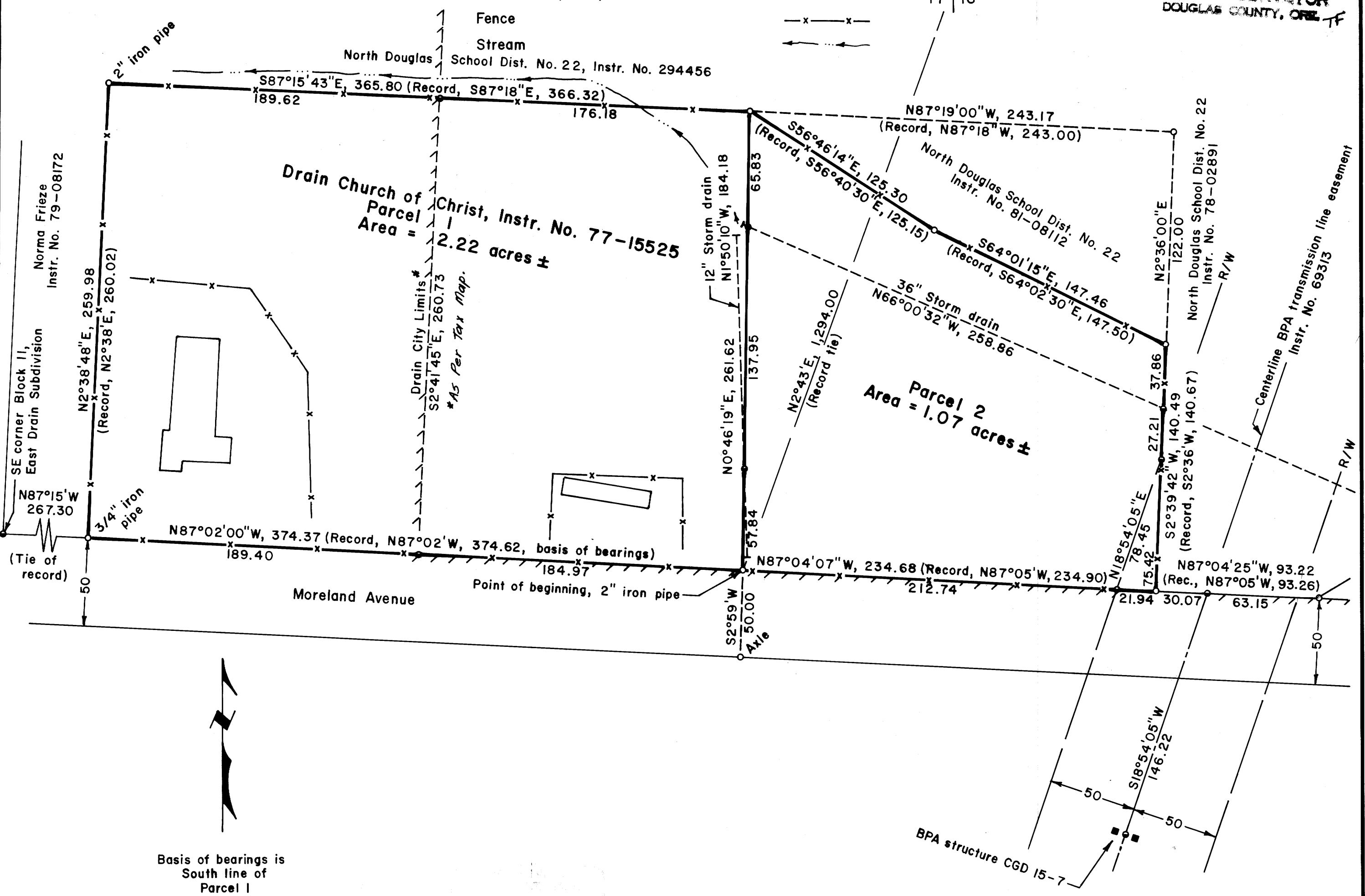
Stream



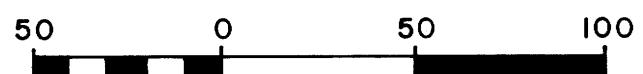
FILED

FEB 27 1989 TF

COUNTY SURVEYOR DOUGLAS COUNTY, ORE TF



Basis of bearings is South line of Parcel 1



Scale: 1" = 50 ft.

Bruce A. Shaner

COUNTY SURVEYORS FILE DATA DO NOT REMOVE FROM OFFICE

MINOR LAND PARTITION IN THE CITY OF DRAIN & in the NE 1/4 NE 1/4 of Section 17 & in the NW 1/4 NW 1/4 of Section 16, T 22 S, R 5 W, W. M., Douglas County, Oregon

For: Drain Church of Christ

By: Shaner Engineering, Inc.

January 31, 1989