

**SURVEY FOR BILL RICE**  
 LYING IN NW 1/4 SEC. 22, T28S, R4W, W.M.,  
 DOUGLAS COUNTY,  
 OREGON.

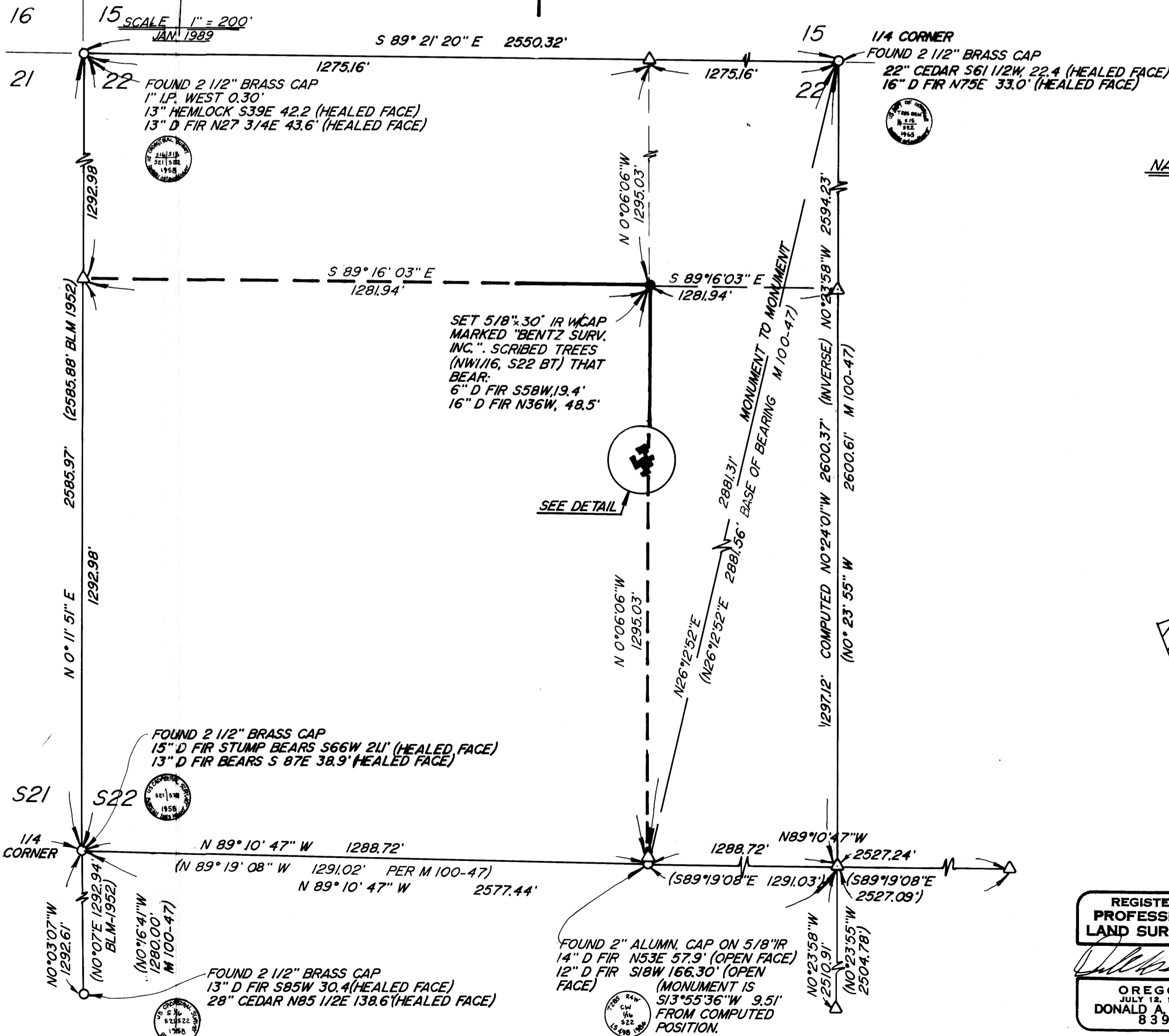
COUNTY SURVEYORS FILE DATA  
 DO NOT REMOVE FROM OFFICE

FILE # *72*  
 10 1989 TF  
 COUNTY SURVEYOR  
 DOUGLAS COUNTY, OREGON  
 TF

**SURVEY BY**  
 DONALD A. BENTZ INC.  
 P.O. BOX 901  
 WINCHESTER, OREGON  
 97495

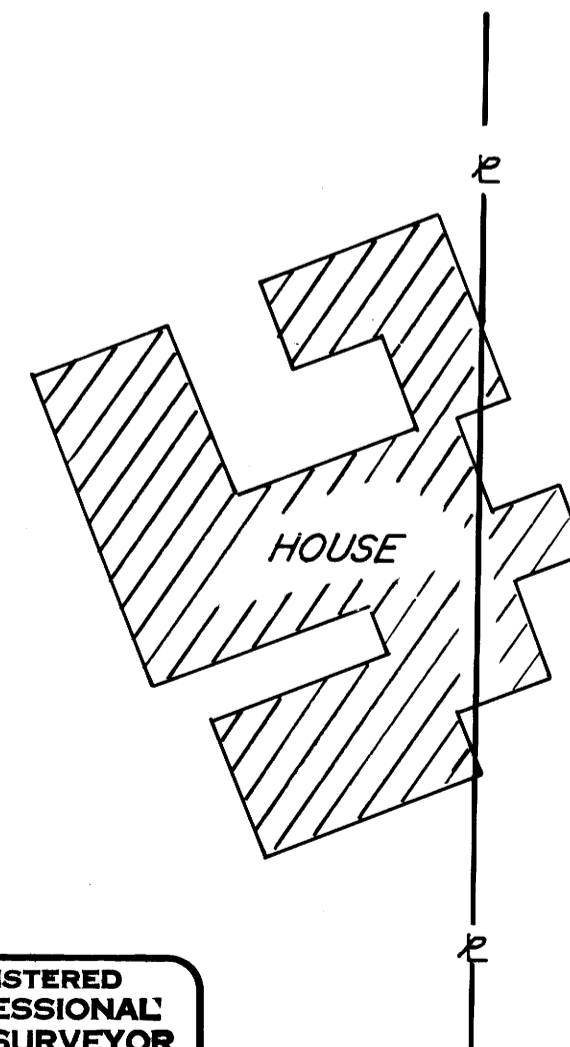
**LEGEND**  
 △ - COMPUTED POINT  
 ○ - FOUND MONUMENT AS NOTED  
 ● - SET MONUMENT AS NOTED

└ LINE FLAGGED



**NARRATIVE**

FIELD WORK BY B. BROWNING & S. RYAN USING  
 WILD T-1 AND RED-1  
 TIED NW CORNER SECTION 22, N 1/4 CORNER  
 SECTION 22, CW 1/16 OF SECTION 22 AND W 1/4  
 CORNER SECTION 22.  
 BASE BEARING AS SHOWN. FOUND DISCREPANCY  
 PER M 100-47 WHEN I TIED W 1/4 CORNER SEC-  
 TION 22. VERIFIED BLM SURVEY - NOTED 13.5  
 FOOT DIFFERENCE WITH M 100-47. DISCUSSED  
 SURVEY WITH H. JOHNSTON USED RECORD BEAR-  
 INGS AND DISTANCES (FROM M 100-47) TO ESTAB-  
 LISH SOUTH 1/4 AND EAST 1/4 CORNERS. USING  
 THOSE LOCATIONS AND OUR NEW POSITION FOR  
 WEST 1/4 I COMPUTED NEW CENTER OF SECTION  
 AND CW 1/16. I THEN PROCEEDED PER STANDARD  
 SECTION BREAKDOWN.



REGISTERED  
 PROFESSIONAL  
 LAND SURVEYOR

*Donald A. Bentz*  
 OREGON  
 JULY 12, 1968  
 DONALD A. BENTZ  
 839

**DETAIL**

MAP FILE M167-48