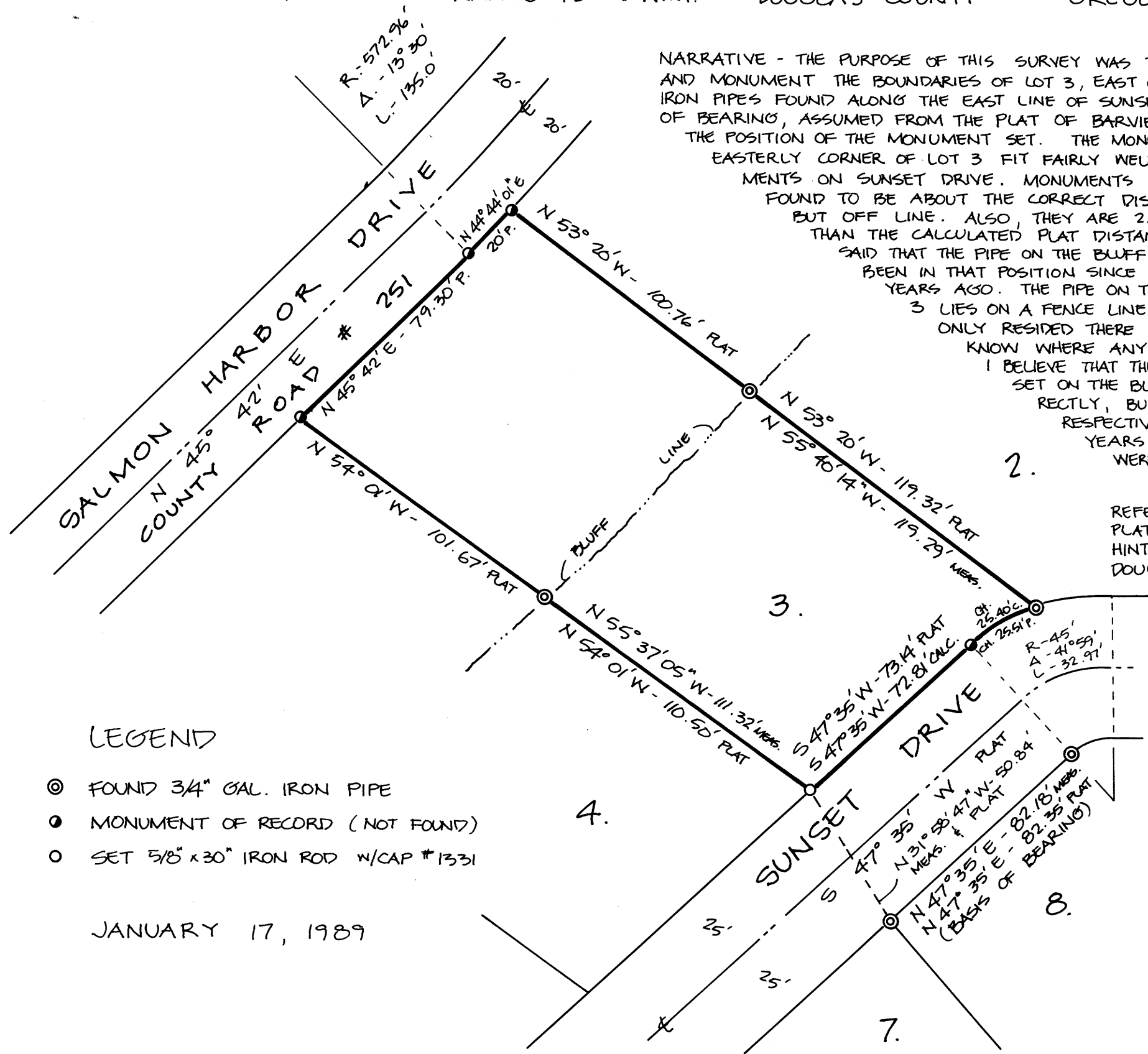


PROPERTY SURVEY

COUNTY SURVEYORS FILE DATA
DO NOT REMOVE FROM OFFICE

LOT 3 • PLAT OF BARVIEW HEIGHTS
 TOWNSHIP 22 SOUTH

BEING A PORTION OF THE N.E. 1/4 OF THE N.W. 1/4 OF SECTION 13
 RANGE 13 W.W.M. DOUGLAS COUNTY OREGON



NARRATIVE - THE PURPOSE OF THIS SURVEY WAS TO LOCATE AND OR ESTABLISH AND MONUMENT THE BOUNDARIES OF LOT 3, EAST OF THE BLUFF LINE. THE 3/4" IRON PIPES FOUND ALONG THE EAST LINE OF SUNSET DRIVE SERVED AS A BASIS OF BEARING, ASSUMED FROM THE PLAT OF BARVIEW HEIGHTS, AND CONTROLLED THE POSITION OF THE MONUMENT SET. THE MONUMENT FOUND AT THE NORTH-EASTERLY CORNER OF LOT 3 FIT FAIRLY WELL WITH OTHER FOUND MONUMENTS ON SUNSET DRIVE. MONUMENTS ALONG THE BLUFF LINE WERE FOUND TO BE ABOUT THE CORRECT DISTANCE FROM SUNSET DRIVE, BUT OFF LINE. ALSO, THEY ARE 2.04 FEET CLOSER TO EACH OTHER THAN THE CALCULATED PLAT DISTANCE. THE RESIDENT OF LOT 4 SAID THAT THE PIPE ON THE BLUFF BETWEEN LOTS 3 AND 4 HAS BEEN IN THAT POSITION SINCE HE BUILT HIS HOUSE ABOUT 15 YEARS AGO. THE PIPE ON THE BLUFF BETWEEN LOTS 2 AND 3 LIES ON A FENCE LINE. THE OWNER OF LOT 3 HAS ONLY RESIDED THERE A SHORT TIME AND DIDN'T KNOW WHERE ANY OF THE MONUMENTS WERE. I BELIEVE THAT THE ORIGINAL PLAT MONUMENTS SET ON THE BLUFF LINE WERE PLACED INCORRECTLY, BUT HAVE BEEN ACCEPTED BY THE RESPECTIVE LAND OWNERS OVER THE YEARS. THEREFORE, THE POSITIONS WERE NOT REMONUMENTED.

REFERENCE -
 PLAT OF BARVIEW HEIGHTS
 HINTZ - 1964 VOL. 12 PG. 36
 DOUGLAS COUNTY RECORDS

- LEGEND
- ⊙ FOUND 3/4" GAL. IRON PIPE
 - MONUMENT OF RECORD (NOT FOUND)
 - SET 5/8" x 30" IRON ROD W/CAP #1331

JANUARY 17, 1989

FILED

JR
 FEB 10 1989 *TF*

COUNTY SURVEYOR
 DOUGLAS COUNTY, ORE. *TF*

COUNTY SURVEYOR

FOR -
 VERNON LEE
 P.O. BOX 112
 WINCHESTER BAY, OR.

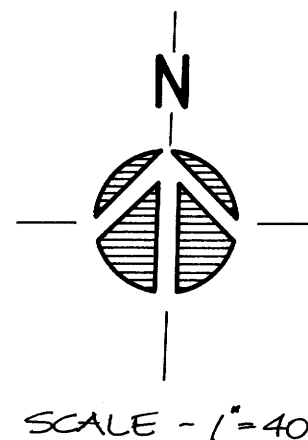
PREPARED BY -
 KOOS ENGINEERING
 2524 BROADWAY
 NORTH BEND, OR.

REGISTERED
 PROFESSIONAL
 LAND SURVEYOR

J. Gregory Solarz

OREGON
 SEPTEMBER 23, 1977
 GREGORY SOLARZ
 1331

PROFESSIONAL LAND
 SURVEYOR #1331



KE KOOS ENGINEERING
 2524 BROADWAY
 NORTH BEND, OREGON

MAP FILE M107-45

MAP FILE M107-45