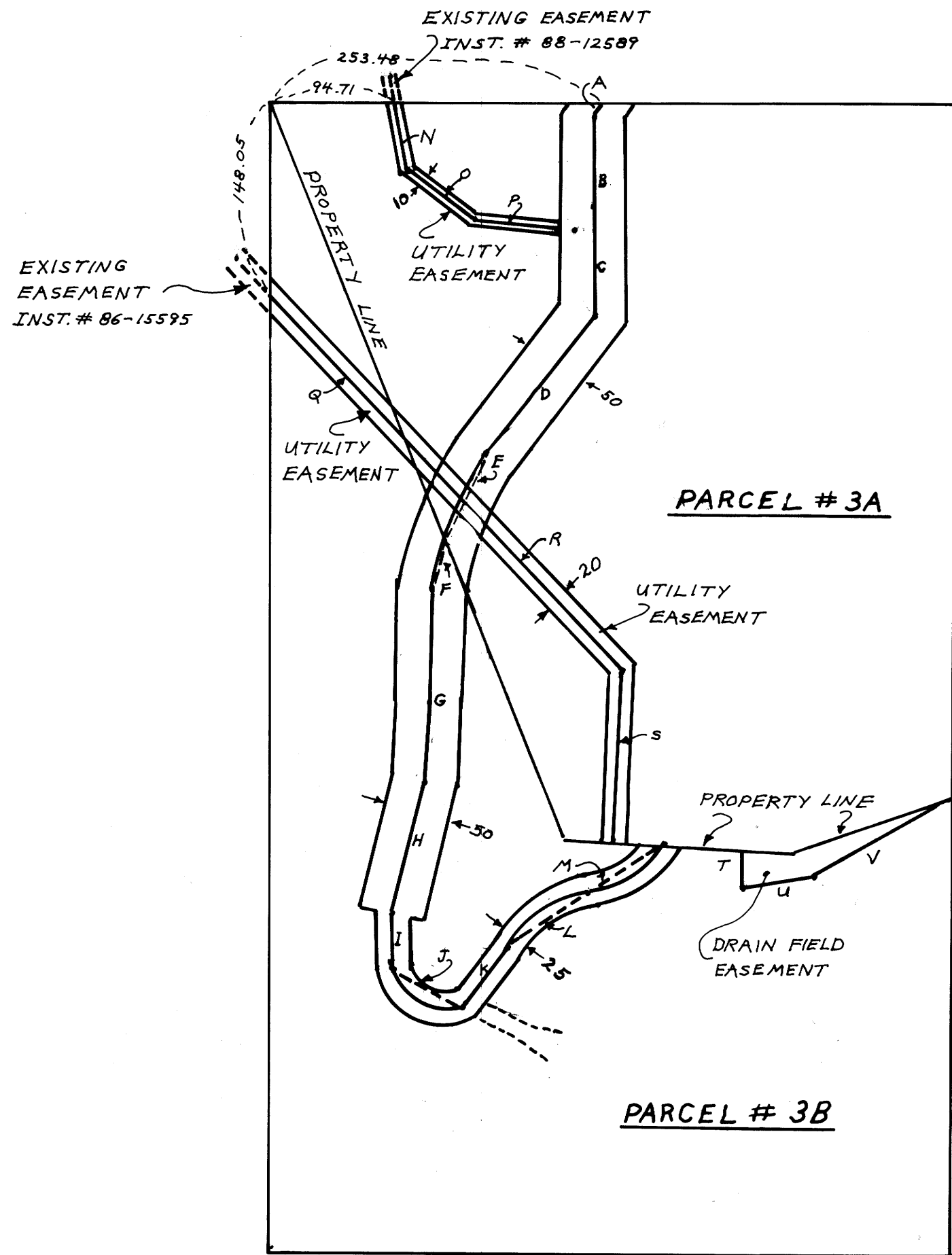


EASEMENTS

FILED

JAN 3 1988

COUNTY SURVEYOR
DOUGLAS COUNTY, IOWA



BEARING	DISTANCE	RADIUS (FT.)	ARC (FT.)
A	S 32°00'00" W	9.10	ON LONG CHORD OF 65 FT. RAD.
B	S 02°00'00" W	69.58	
C	S 02°00'00" W	84.86	
D	S 38°00'00" W	134.94	
E	S 25°32'57" W	73.60	ON LONG CHORD OF 325 FT. RAD. ARC. 73.76
F	S 15°29'52" W	40.23	ON LONG CHORD OF 325 FT. RAD. ARC. 40.26
G	S 02°00'00" W	147.00	
H	S 13°00'00" W	104.77	
I	S 02°01'00" E	43.46	
J	S 61°29'05" E	60.43	ON LONG CHORD OF 40.0 FT. RAD. ARC. 68.48
K	N 36°36'10" E	57.70	
L	N 55°24'10" E	74.47	ON LONG CHORD OF 74.3 FT. RAD. ARC. 78.00
M	N 55°24'10" E	69.42	ON LONG CHORD OF 103.4 FT. RAD. ARC. 70.6
N	S 12°28'58" E	56.27	FROM 3A PROPERTY LINE
O	S 53°41'58" E	59.93	
P	S 85°13'43" E	76.65	TO ROAD EASEMENT
Q	S 43°08'53" E	151.95	TO 3A-3B PROPERTY LINE
R	S 43°08'53" E	242.98	FROM 3A-3B PROPERTY LINE
S	S 02°57'46" W	130.32	TO 3A-3B PROPERTY LINE
T	NORTH	28.26	
U	S 82°20'46" W	54.54	
V	S 58°40'38" W	121.39	

PAGE 2 OF 4



SCALE
1" = 100'

REGISTERED
PROFESSIONAL
LAND SURVEYOR
Wallace Wilbratt
IOWA
JULY 27, 1988
WALLACE WILBRATT