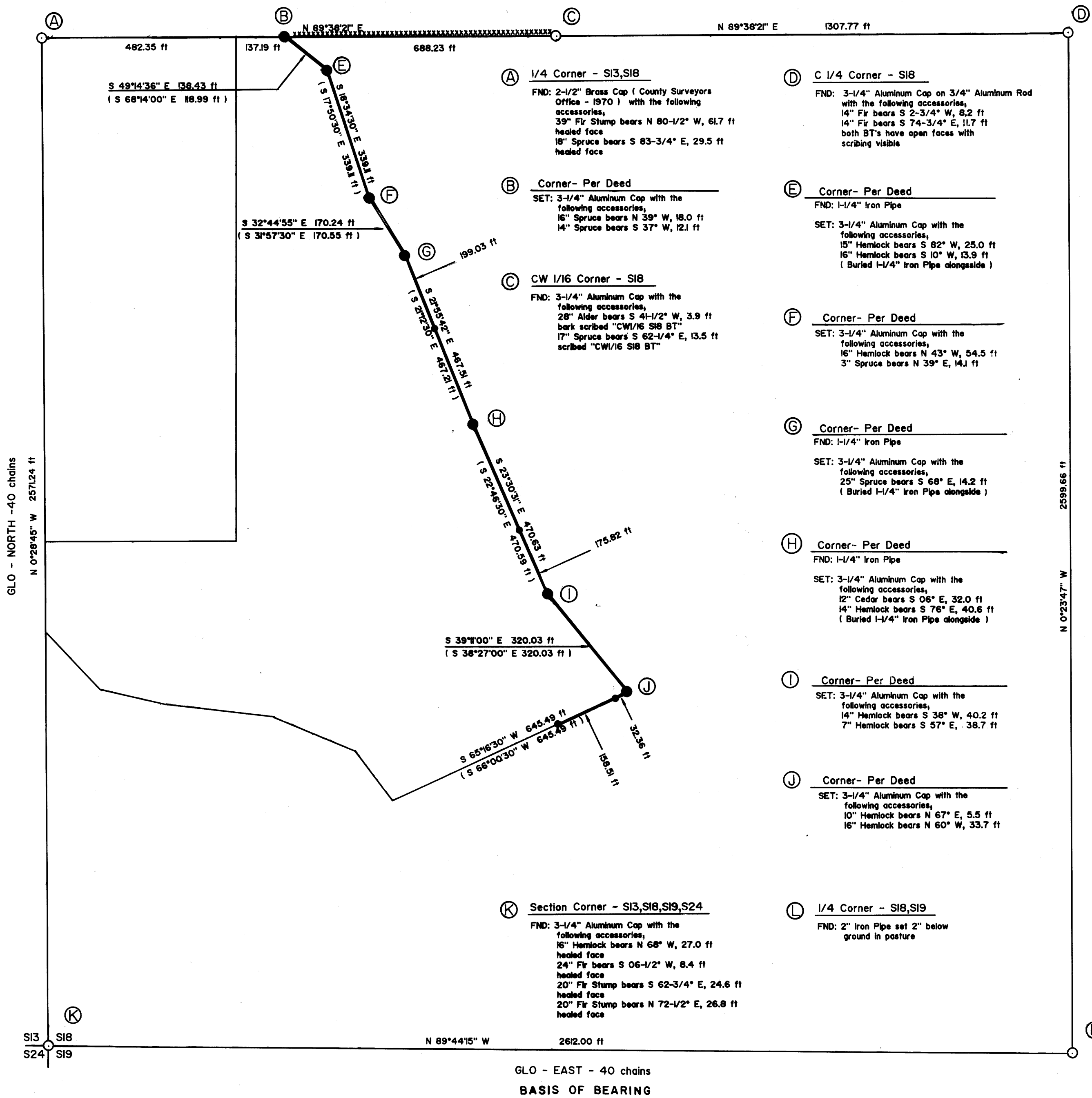


FILED
 v/s
 JAN 10 1989
 COUNTY SURVEYOR
 DOUGLAS COUNTY, ORE.
 d

M107-31



LEGEND

- Corner Monument Found
- Corner Set This Survey
- Aluminum Property Line Post
- ==== Blazed Property Line
- XXXXXXXXX Previously posted line

NARRATIVE

The purpose of this survey was to locate and monument property corners and lines that define lands owned by International Paper Company.

The Basis of Bearing for this survey was the bearing of the line between the South West Section Corner and the South 1/4 Corner of Section 18. Refer to CS No. M 105-64.

Property lines are blazed and monumented with a 6 ft aluminum property line post, at the locations specified on this plat. Magnetic markers are buried at the base of each set aluminum post. Posts set to within ± 1 foot of true line.

Corners monumented during this survey were set per standard subdivision procedures outlined in the BLM Manual of Survey Instruction, 1973 Edition.

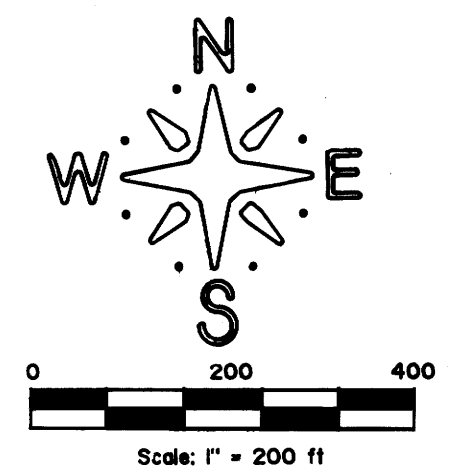
This survey was performed using a NIKON NTD-2 semi total station.

Caps set are marked "IP TIMBERLANDS OPERATING COMPANY RLS 1091 - 1988". Caps are set on a 3/4" X 30" Aluminum Rod.

Record information is shown in brackets. (CS No. 40/169).

Property corners found from CS 40/169 were used to determine the position of those corners established in this survey.

Points (E), (G) and (H) were held to establish the boundary lines as per CS 40/169. We rotated the deed to our basis of bearing holding the found position of points (E), (G) and (H). Other corners were set per this rotation.



RECORD OF SURVEY
 for INTERNATIONAL PAPER COMPANY
 by WARD NORTHWEST INC.
 in Section 18, T.21S., R.11W., W.M. (SW 1/4)
 Douglas County, Oregon - 11/16/88

REGISTERED
 PROFESSIONAL
 LAND SURVEYOR
 Robert B. Ward, Jr.
 OREGON
 ROBERT B. WARD, JR.
 JULY 30, 1976
 1291

WARD NORTHWEST INC.
 P.O. Box 105
 Florence, Oregon 97439

COUNTY SURVEYORS FILE DATA
 DO NOT REMOVE FROM OFFICE

M107-31