

**COUNTY SURVEYORS FILE DATA
DO NOT REMOVE FROM OFFICE**

SURVEY TO SET CORNERS ON PART OF LOT 18, DEER CREEK ORCHARDS TRACTS, PLAT "A"
 LOCATED IN THE S.E. 1/4 OF SECTION 15, T.27S., R.5W., W.M.
 DECEMBER, 1988 SCALE 1" = 50'

For: Stratton Bros. Inc.
 588 Buckhorn Rd.
 Roseburg, OR 97470

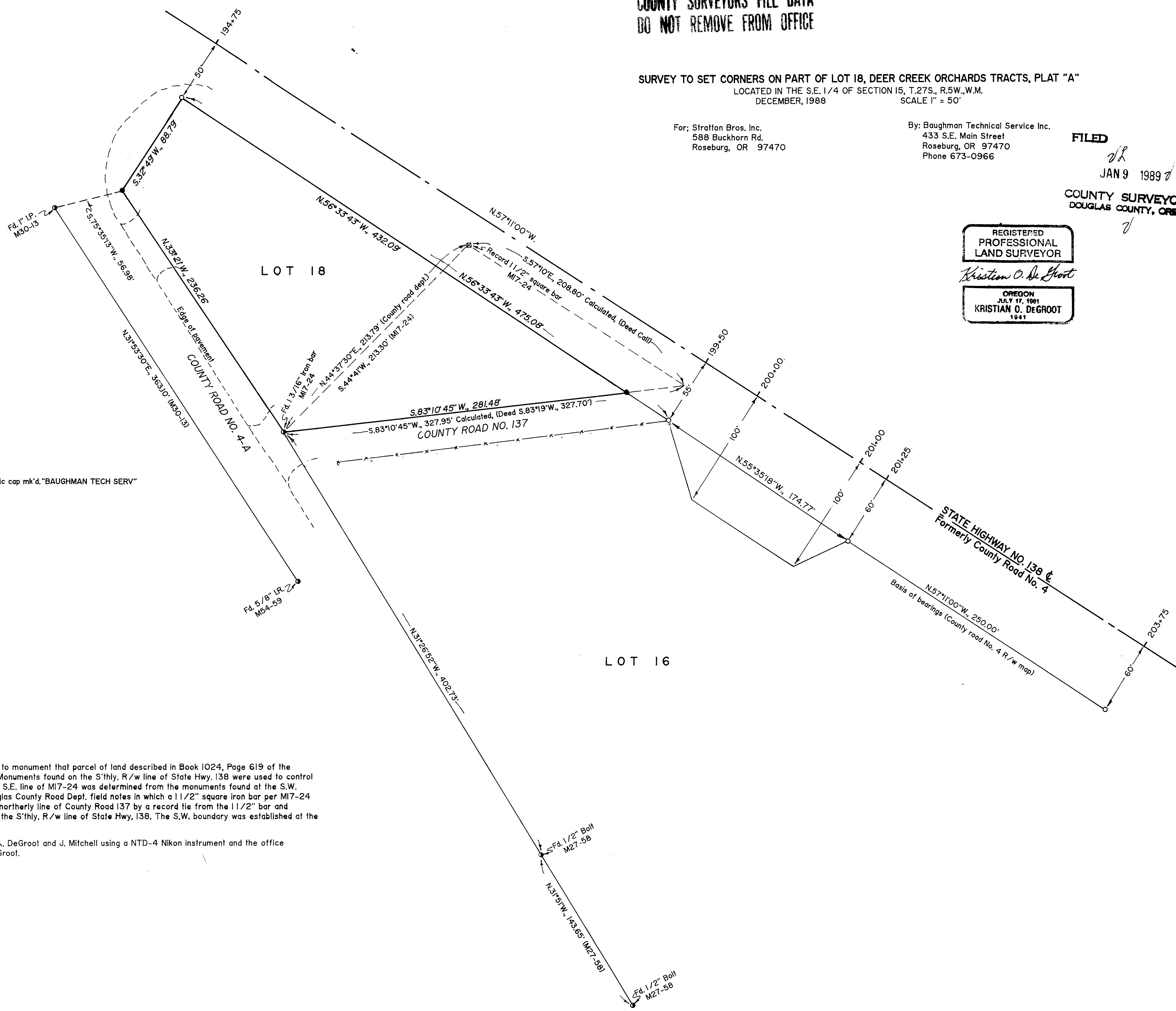
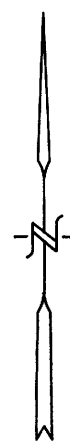
By: Baughman Technical Service Inc.
 433 S.E. Main Street
 Roseburg, OR 97470
 Phone 673-0966

FILED
JL
 JAN 9 1989
**COUNTY SURVEYOR
 DOUGLAS COUNTY, ORE.**

REGISTERED
 PROFESSIONAL
 LAND SURVEYOR

Kristian O. DeGroot

OREGON
 JULY 17, 1981
KRISTIAN O. DEGROOT
 1941



LEGEND:

- = Set 5/8"X30" I.R. w/plastic cap mk'd. "BAUGHMAN TECH SERV"
- = Fd. 5/8" I.R. & R/W post
- ⊙ = Fd. monument as noted
- ⊠ = Pt. calculated not set
- () = Record calls

NARRATIVE:

The purpose of this survey was to monument that parcel of land described in Book 1024, Page 619 of the Douglas County Deed Records. Monuments found on the S'thly. R/w line of State Hwy. 138 were used to control the N.E. & N.W. boundaries. The S.E. line of M17-24 was determined from the monuments found at the S.W. corner of Lot 18 and 1969 Douglas County Road Dept. field notes in which a 1 1/2" square iron bar per M17-24 was found. I then computed the northerly line of County Road 137 by a record tie from the 1 1/2" bar and monumented the S.E. corner on the S'thly. R/w line of State Hwy. 138. The S.W. boundary was established at the record bearing per M17-24.

This survey was performed by K. DeGroot and J. Mitchell using a NTD-4 Nikon instrument and the office calculations was done by K. DeGroot.