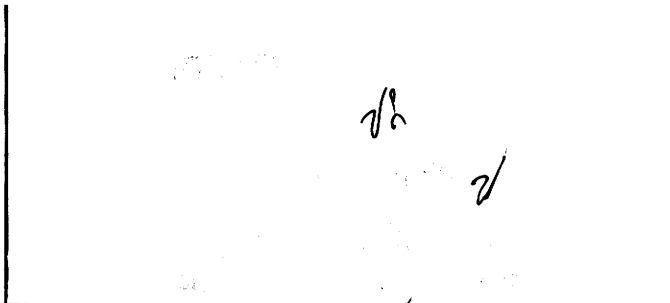


**COUNTY SURVEYORS FILE DATA
DO NOT REMOVE FROM OFFICE**

**SURVEY OF SOUTH 1/2
SEC. 34, T21S, R5W, W.M.
DOUGLAS COUNTY, OREGON
FOR WEYERHAEUSER Co. BY WEYERHAEUSER Co.
OCTOBER 28, 1988**



63/85
M107-26

SW CORNER SEC. 34

FOUND: 1" ALUMINUM PIPE BY WEYERHAEUSER 1960
26" FIR N54W 34.6 FEET DOUGLAS COUNTY 1964 CSBT
18" FIR S70E 82.2 FEET WEYERHAEUSER 1960 (TO 'W' NAIL)
18" FIR S78W 44.2 FEET WEYERHAEUSER 1960 (TO 'W' NAIL)
30" FIR N86E 57.2 FEET DOUGLAS COUNTY 1964 CSBT

SW 1/4

SE 1/4

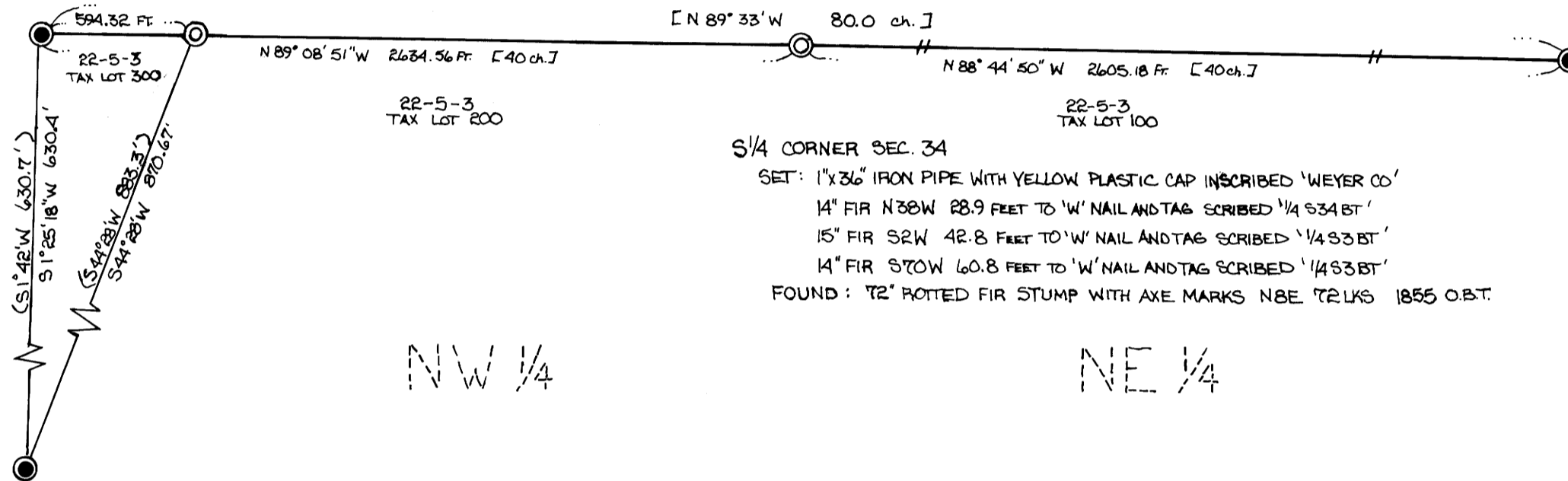
21-5-34
TAX LOT 100

SE CORNER SEC. 34

FOUND: DOUGLAS COUNTY BRASS CAP
32" FIR N21W 9.0 FEET CLOSED FACE MCGILLICUDDY 1953
28" W.FIR N21E 31.3 FEET CLOSED FACE MCGILLICUDDY 1953
30" FIR STUB S33E 17.2 FEET SCRIBING BEING ORIGINAL
B.T. 1855.
48" FIR STUMP S22W 44.2 FEET CLOSED FACE
MCGILLICUDDY 1953

PROPERTY CORNER:

SET: 1"x3/8" IRON PIPE WITH YELLOW PLASTIC CAP INSCRIBED 'WEYER CO'
26" FIR S15E 15.3 FEET TO 'W' NAIL AND TAG
28" FIR S86E 35.1 FEET TO 'W' NAIL AND TAG



S 1/4 CORNER SEC. 34

SET: 1"x3/8" IRON PIPE WITH YELLOW PLASTIC CAP INSCRIBED 'WEYER CO'
14" FIR N38W 28.9 FEET TO 'W' NAIL AND TAG SCRIBED 1/4 S34 BT'
15" FIR S2W 42.8 FEET TO 'W' NAIL AND TAG SCRIBED 1/4 S3 BT'
14" FIR S70W 60.8 FEET TO 'W' NAIL AND TAG SCRIBED 1/4 S3 BT'
FOUND: 12" POTTED FIR STUMP WITH AXE MARKS N8E T2 LKS 1855 O.B.T.

NW 1/4

NE 1/4

PROPERTY CORNER

FOUND: 1"x3/8" ALUMINUM PIPE
18" FIR EAST 1.4 FEET WEYERHAEUSER 1960 (TO 'W' NAIL)
16" FIR S28W 8.0 FEET WEYERHAEUSER 1960 (TO 'W' NAIL)

REGISTERED
PROFESSIONAL
LAND SURVEYOR

David H. Wellman

OREGON
JULY 1986
DAVID H. WELLMAN
2183

LEGEND:

- CORNERS FOUND FOR CONTROL
- CORNERS SET THIS SURVEY
- LINE BLAZED AND PAINTED
- BASIS OF BEARING — SOLAR OBSERVATION
- [] 1855 GLO RECORD
- DISTANCE TO BEARING TREES ARE CENTER MEASURE UNLESS OTHERWISE NOTED
- BEARINGS TO BEARING TREES ARE BASED ON MAGNETIC 20° E DECLINATION
- SCALE: 1" = 500'
- () JOHNSON - WEYERHAEUSER DEED RECORD 1960

NARRATIVE:

THIS SURVEY WAS MADE IN OCTOBER OF 1988 BY WEYERHAEUSER COMPANY, PO BOX 275, SPRINGFIELD OREGON 97477. THE PURPOSE OF THE SURVEY WAS TO LOCATE AND MARK THE PROPERTY LINES OF LAND OWNED BY WEYERHAEUSER COMPANY IN SECTION 34, T21S, R5W, W.M. A WILD T16 THEODOLITE AND DI4L EDM WERE USED TO PERFORM THIS SURVEY. A CLOSED RANDOM TRAVERSE WITH A MINIMUM CLOSURE OF 1:6500 WAS RUN BETWEEN FOUND CORNERS FOR CONTROL. BEARINGS ARE BASED ON SOLAR OBSERVATION. OFFSETS FROM THE RANDOM TRAVERSE LINE TO TRUE PROPERTY LINE WERE CALCULATED AND USED TO DETERMINE THE TRUE PROPERTY LINE. THE TRUE PROPERTY LINE IS MARKED IN THE FIELD BY BLAZING TREES AND PAINTING THE BLAZES RED ON BOTH SIDES OF THE TRUE LINE. THE SOUTH 1/4 CORNER WAS SET BY CALL DISTANCE AND BEARING FROM A STUMP BELIEVED TO BE THE ORIGINAL 1855 BEARING TREE. THE STUMP HAS NUMEROUS AGES OF AXEWORK. PROXIMITY TO THE CALCULATED PROPORTIONED POSITION AND RELATIONSHIP TO ORIGINAL TOPOGRAPHICAL CALLS IS CONSIDERED AS SUPPORTING EVIDENCE TO THIS CORNER'S LOCATION. NO SCRIBING WAS RECOVERED. THE PROPERTY CORNER WAS SET AT THE INTERSECTION OF THE NORTH LINE OF SECTION 3 AND THE DEED CALL BEARING (ESTABLISHED BY SOLAR OBSERVATION) OF A LINE FROM A 1" ALUMINUM PIPE ON THE WEST LINE OF SECTION 3 AS PER DEED RECORD BETWEEN WEYERHAEUSER COMPANY AND BEN A. JOHNSON RECORDED IN VOLUME 300 PAGE 333 OF DOUGLAS COUNTY DEED RECORDS. THE CORNERS SET ARE 1"x3/8" IRON PIPE WITH YELLOW PLASTIC CAP INSCRIBED 'WEYER CO'. MEASUREMENT TO BEARING TREES ARE CENTER MEASURE UNLESS OTHERWISE NOTED WITH BEARINGS BEING ON MAGNETIC VARIATION OF 20° EAST.



63/85
M107-26