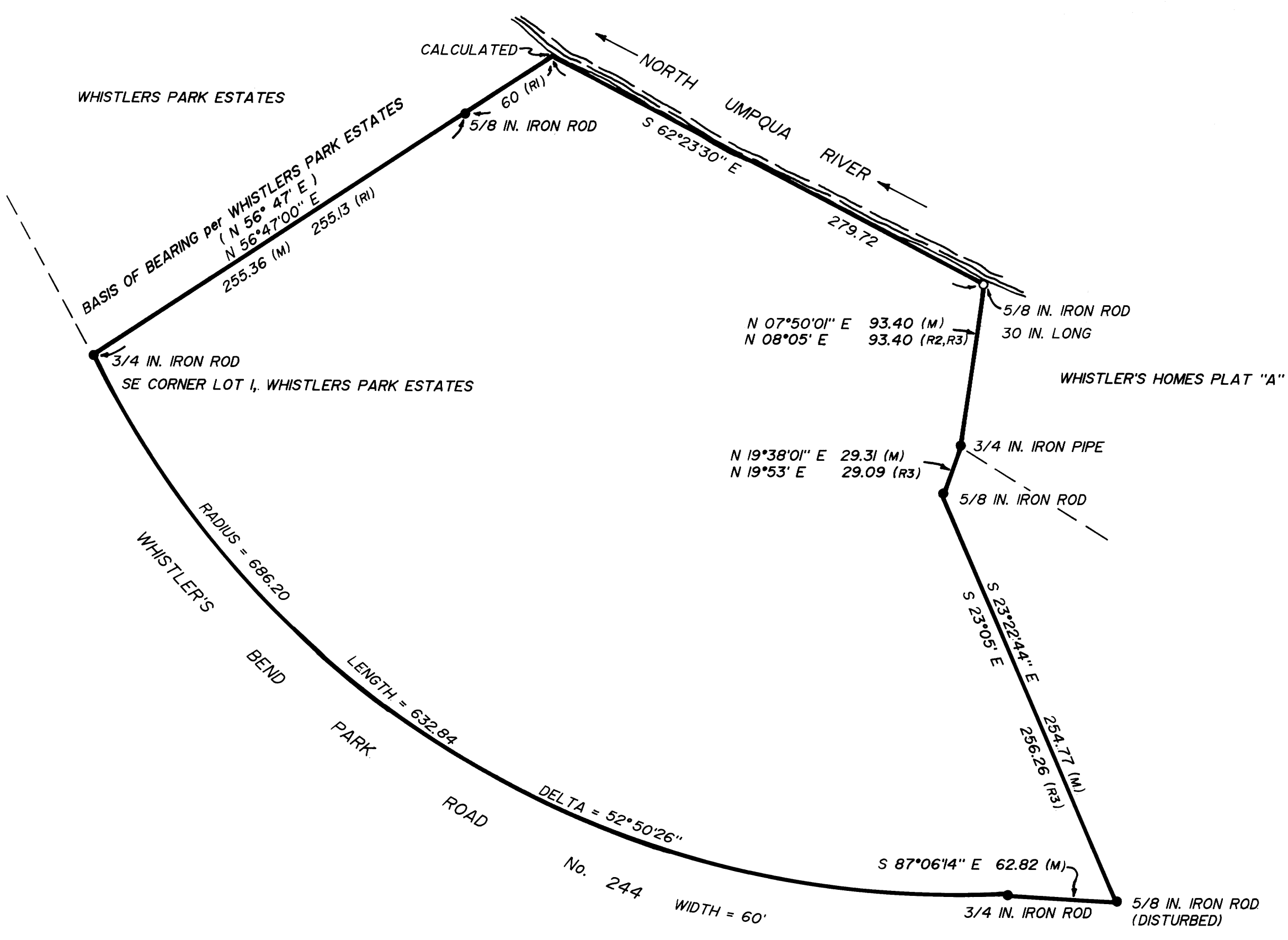


COUNTY SURVEYORS FILE DATA
DO NOT REMOVE FROM OFFICE

SURVEY for DEED DESCRIPTION and
LOT CORNER RECOVERY
for
SUE BRINKMAN

NE 1/4 & NW 1/4 SECTION 17, T.26S., R.4W., W.M.
DECEMBER, 1988

FILED
DEC 28 1988
COUNTY SURVEYOR
DOUGLAS COUNTY, ORE.

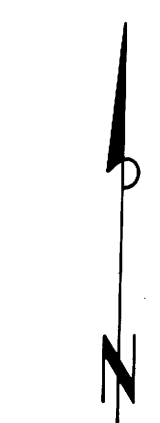


LEGEND:

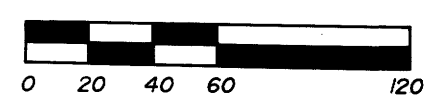
- = FOUND MONUMENT AS NOTED
- = SET 5/8 IN. x 30 IN. IRON ROD WITH CAP MARKED "AA SURVEYING, INC."
- M = MEASURED
- R1 = RECORD INFORMATION per WHISTLERS PARK ESTATES
- R2 = RECORD INFORMATION per WHISTLER'S HOMES PLAT "A"
- R3 = RECORD INFORMATION per CS FILE 51 / 271

NARRATIVE:

ESTABLISHED NORTH EAST PROPERTY CORNER BY USING RECORD DISTANCE AND TURNING RECORD ANGLE AT THE 3/4 INCH IRON PIPE.



SCALE: 1" = 60'



REGISTERED
PROFESSIONAL
LAND SURVEYOR

Mark A. Heimburger

OREGON
JULY 16, 1987
MARK A. HEIMBURGER
2287

SURVEY BY:

A.A. SURVEYING SERVICE, INC.
2566 N.E. Stephens Street
Roseburg, Oregon 97470
PH. (503) 672-2096